

Well no : 7121/05-02

Operator : STATOIL

Coordinates : 71 40 20.79 N
21 39 24.42 E

UTM coord. : 7952737 N
523051 E

Licence no : 110

Permit no : 516

Rig : ROSS ISLE

Rig type : SEMI-SUB.

Contractor : ROSS DRILLING CO. A/S

Bottom hole temperature : deg.C

Elev. KB : 22 M

Spud. date : 86.05.05

Water depth : 328 M

Compl. date : 86.07.06

Total depth : 2543 M

Spud. class : WILDCAT

Form. at TD : TRIASSIC

Compl. class : P&A. OIL/GAS DISC.

Prod. form : JURASSIC

Seisloca : ST 8310 - 385 SP. 760

LICENSEES

5.000000	AMERADA HESS NORGE A/S
10.000000	NORSKE CONOCO A/S
20.000000	ELF AQUITAINE NORGE A/S
5.000000	NORSK FINA A/S
10.000000	NORSK HYDRO PRODUKSJON A.S
50.000000	DEN NORSKE STATS OLJESELSKAP A.S

CASING AND LEAK-OFF TESTS

Type	Casing diam.	Depth below KB	Hole diam.	Hole depth below KB	Lot mud eqv. g/cm3
CONDUCTOR	30	449.0	36	452.0	.
SURF.COND.	20	829.0	26	1035.0	1.53
INTERM.	13 3/8	1898.4	17 1/2	1977.0	1.48

CONVENTIONAL CORES

Core no.	Intervals cored meters	Recovery		Series
		M	%	
1	2324.0 - 2342.9	18.9	100.0	
2	2343.0 - 2371.0	28.0	100.0	
3	2371.0 - 2399.0	28.0	100.0	

MUD PROPERTIES

Depth below KB meter	Mud weight g/cm3	Viscosity	Mud type
390.000	1.08	0.0	WATER BASED
1035.000	1.10	600.0	WATER BASED
1035.000	1.08	900.0	WATER BASED
1169.000	1.10	2400.0	WATER BASED

1415.000	1.13	2300.0	WATER BASED
1580.000	1.14	2200.0	WATER BASED
1754.000	1.15	2000.0	WATER BASED
1977.000	1.16	2000.0	WATER BASED
2060.000	1.30	2200.0	WATER BASED
2135.000	1.28	1900.0	WATER BASED
2217.000	1.26	1900.0	WATER BASED
2293.000	1.25	1900.0	WATER BASED
2324.000	1.28	2000.0	WATER BASED
2431.000	1.27	1900.0	WATER BASED
2543.000	1.26	2200.0	WATER BASED

DRILL BIT CUTTINGS AND WET SAMPLES

SAMPLE TYPE	INTERVAL BELOW KB	NUMBER OF SAMPLES
Cutting	460-2539	400
Wet Samples	460-2539	265

SHALLOW GAS

Interval
below KB

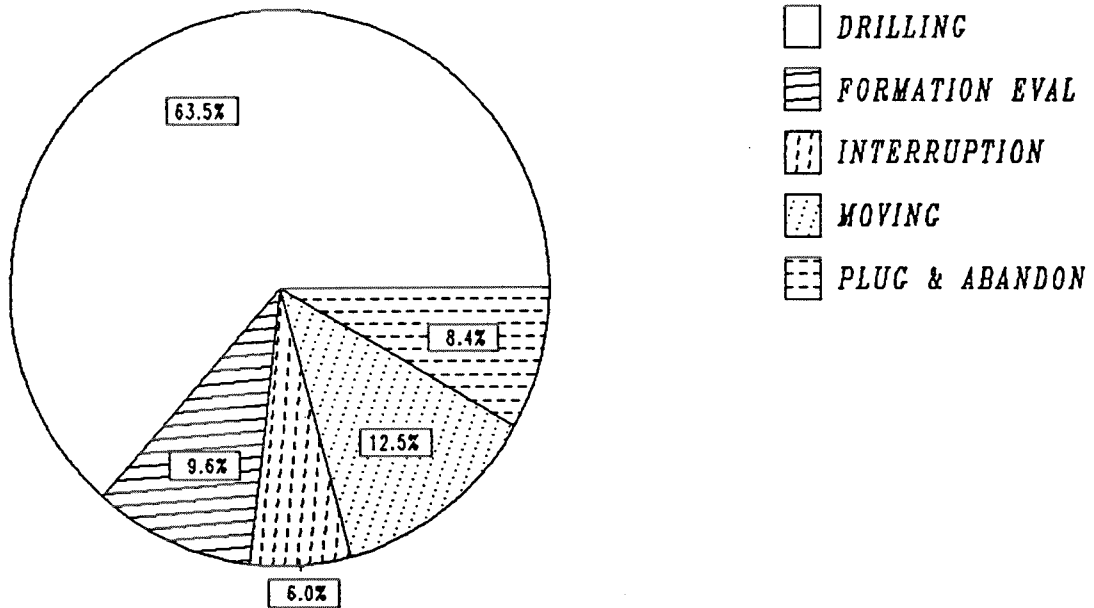
REMARKS

AVAILABLE LOGS

LOG TYPE	INTERVALS	1/200	1/500	Div.
DIFL LS BHC AC CAL GR	829.000 - 1958.000	X	X	
DIFL LS BHC AC CAL	1897.000 - 2544.000	X	X	
CDL GR	829.000 - 1939.500	X		
CDL CNL GR	1897.000 - 2544.500	X		
DLL MLL GR	2293.000 - 2544.500	X		
CDM /4-ARM DIPLOG	1897.000 - 2540.000	X	X	
FMT HP CRYSTAL	2329.000 - 2369.000	X	X	
FMT	2328.000 - 2355.000	X	X	
ACBL VDL	344.000 - 1898.000	X		
DRILL. DATA PRESS.	350.000 - 2543.000		1:5000	
TEMP. DATA LOG	450.000 - 2540.000		1.5000	
MUD	350.000 - 2543.000			X
VELOCITY LOG	829.000 - 2544.500		1:1000X	
(Synthetic seismogram, marine.10cm/s				5 stk.)
(Air gun well velocity/calibrated log				1 stk.)
(Display of well velocity records, part 1-3				3 stk.)
(VSP.Norm/Rev.Pol.10cm/s.Display 1-7				12 stk.)

DAILY DRILLING REPORT SYSTEM

Main operations for well : 7121/05 -02



Total : 1128.00 hours

Main operation	Minutes	Hours	% of total
DRILLING	42960	716.00	63.48
FORMATION EVAL	6510	108.50	9.62
INTERRUPTION	4050	67.50	5.98
MOVING	8490	141.50	12.54
PLUG & ABANDON	5670	94.50	8.38

MAIN OPERATIONS FOR WELL : 7121 / 05 - 02

MAIN OPERATION : DRILLING

Sub operations	Minutes	Hrs	% of total
BOP ACTIVITIES	120	2.00	0.28
BOP/WELLHEAD EQ	3930	65.50	9.15
CASING	3300	55.00	7.68
CIRC/COND	2010	33.50	4.68
DRILL	16890	281.50	39.32
HOLE OPEN	5940	99.00	13.83
PRESS DETECTION	60	1.00	0.14
REAM	780	13.00	1.82
SURVEY	2160	36.00	5.03
TRIP	7710	128.50	17.95
WAIT	60	1.00	0.14
Total	42960	716.00	100.00

MAIN OPERATION : FORMATION EVAL

Sub operations	Minutes	Hrs	% of total
CIRC SAMPLES	120	2.00	1.84
CIRC/COND	330	5.50	5.07
CORE	1230	20.50	18.89
LOG	4320	72.00	66.36
OTHER	30	0.50	0.46
RFT/FIT	90	1.50	1.38
TRIP	390	6.50	5.99
Total	6510	108.50	100.00

MAIN OPERATION : INTERRUPTION

Sub operations	Minutes	Hrs	% of total
FISH	2910	48.50	71.85
MAINTAIN/REP	750	12.50	18.52
OTHER	60	1.00	1.48
WAIT	330	5.50	8.15
Total	4050	67.50	100.00

MAIN OPERATION : MOVING

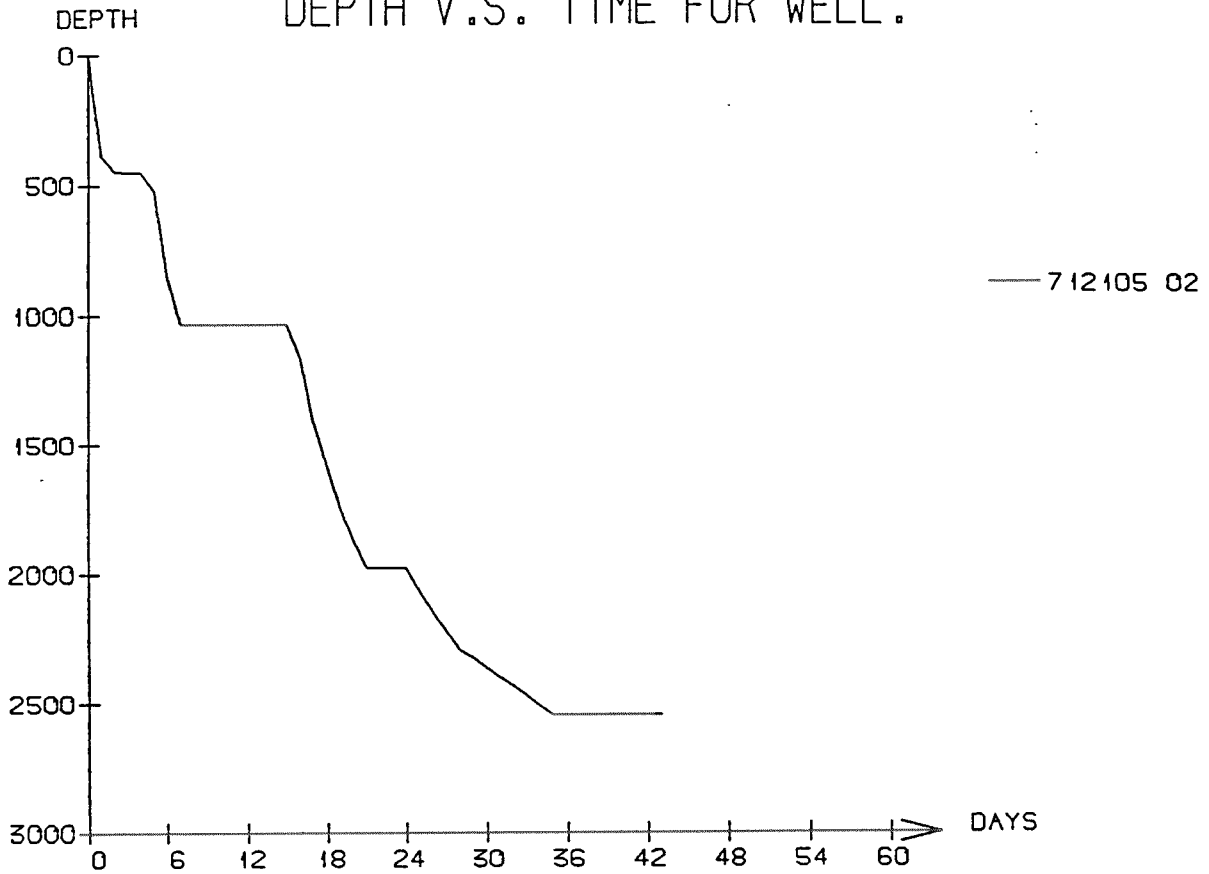
Sub operations	Minutes	Hrs	% of total
ANCHOR	3210	53.50	37.81
TRANSIT	5280	88.00	62.19
Total	8490	141.50	100.00

MAIN OPERATION : PLUG & ABANDON

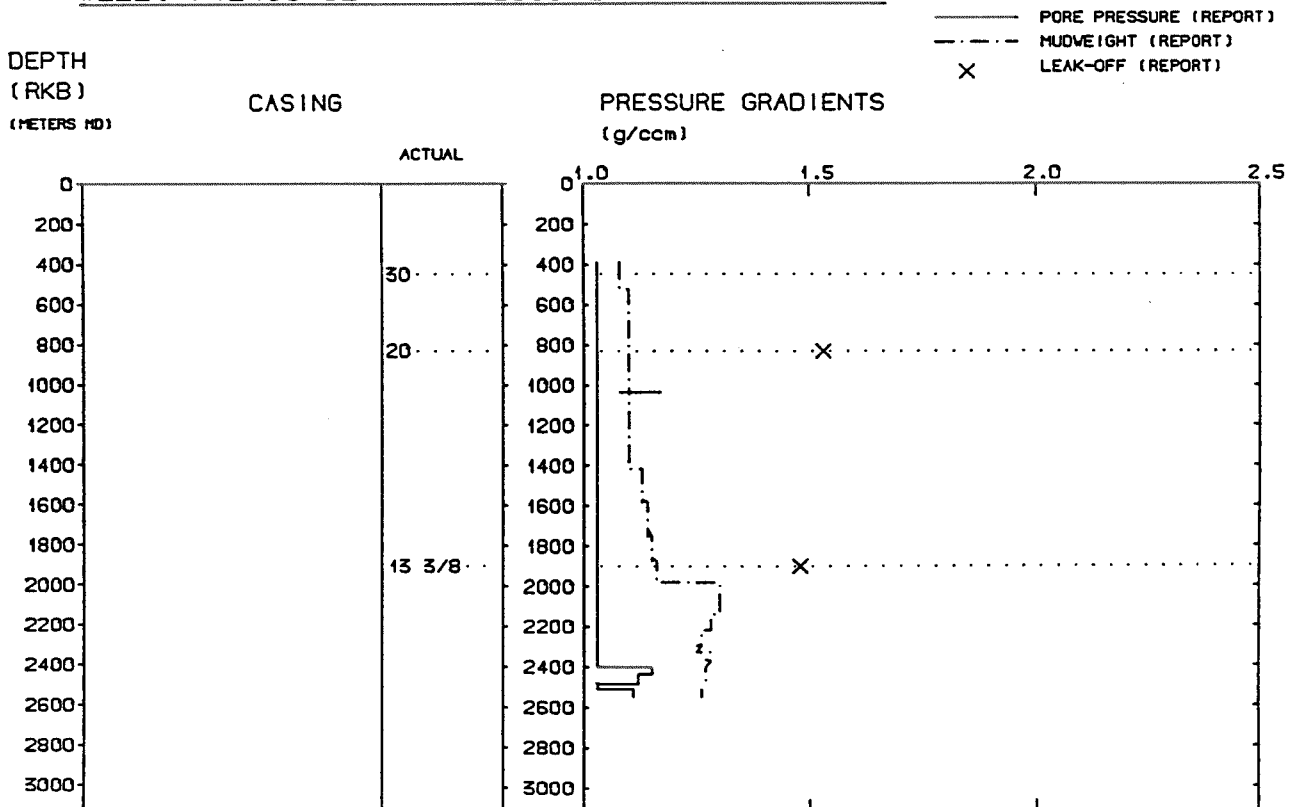
Sub operations	Minutes	Hrs	% of total
CEMENT PLUG	300	5.00	5.29
CIRC/COND	450	7.50	7.94
CUT	390	6.50	6.88
EQUIP RECOVERY	2790	46.50	49.21
OTHER	90	1.50	1.59
PERFORATE	240	4.00	4.23
SQUEEZE	60	1.00	1.06
TRIP	1350	22.50	23.81
Total	5670	94.50	100.00

Total time used 1128.00 hrs

DEPTH V.S. TIME FOR WELL:



WELL: 712105 02 PRESSURE COMPOSITE PLOT



Well History 7121/5-2

GENERAL:

Well 7121/5-2 was drilled in the Beta structure North-East of Snøhvit at the flank of the Hammerfest Basin. The main objective of the well was to test the hydrocarbon accumulation on the Beta structure in sandstones of the Stø formation.

The prognosed depth was 2607 m RKB.

OPERATIONS:

Wildcat well 7121/5-2 was spudded 5 May 1986 by Ross Drilling Co. A/S semi-submersible rig Ross Isle and completed 6 July 1986 at a depth of 2543 m in Triassic sandstones. Drilling proceeded without significant problems.

3 cores were cut in the Stø Formation in the interval 2324 - 2399 m. The hydrocarbon bearing Stø Formation was encountered at 2323 m. The gas/oil contact was at 2346 m, and the oil/water contact at 2358.5 m. The oil/water contact was picked at 2358.5 m from both the logs and core data.

The well was plugged and abandoned as an oil and gas discovery.

TESTING:

Due to presence of H₂S in the well no DST tests were performed.

GEOLOGICAL TOPS

WELL: 7121/5-2

	<i>Depth m (RKB)</i>
<i>Nordland Group</i>	350.0
<i>Sotbakken Group</i>	450.0
<i>Torsk Fm.</i>	450.0
<i>Nygrunnen Group</i>	934.0
<i>Kveite Fm.</i>	934.0
<i>Nordvestbanken Group</i>	977.0
<i>Kolmule Fm.</i>	977.0
<i>Kolje Fm.</i>	1820.0
<i>Knurr Fm.</i>	2080.0
<i>Teistengrunnen Group</i>	2259.5
<i>Hekkingen Fm.</i>	2259.5
<i>Fuglen Fm.</i>	2304.5
<i>Realgrunnen Group</i>	2323.0
<i>Stø Fm.</i>	2323.0
<i>Nordmela Fm.</i>	2399.0
<i>Tubåen Fm.</i>	2450.0
<i>Fruholmen Fm.</i>	2503.0
<i>T.D.</i>	2543.0