

Well no : 6507/02-01

Operator : HYDRO

Coordinates : 65 54 02.48 N  
07 26 16.43 E

UTM coord. : 7309911 N  
428828 E

Licence no : 122

Permit no : 518

Rig : POLAR PIONEER

Rig type : SEMI-SUB.

Contractor : POLAR FRONTIER DRILLING A/S

Bottom hole temperature : deg.C

Elev. KB : 23 M

Spud. date : 86.06.24

Water depth : 390 M

Compl. date : 86.09.29

Total depth : 4477 M

Spud. class : WILDCAT

Form. at TD : TRIASSIC

Compl. class : P&A. DRY HOLE

Prod. form :

Seisloca : NRGS 84 - 437 SP. 785

### LICENSEES

-----  
 10.000000 AMERADA HESS NORGE A/S  
 10.000000 ESSO NORGE A.S  
 20.000000 NORSK HYDRO PRODUKSJON A.S  
 10.000000 MOBIL DEVELOPMENT NORWAY A.S.  
 50.000000 DEN NORSKE STATS OLJESELSKAP A.S

### CASING AND LEAK-OFF TESTS

Type	Casing diam.	Depth below KB	Hole diam.	Hole depth below KB	Lot mud eqv. g/cm <sup>3</sup>
CONDUCTOR	30	488.0	36	490.0	.
SURF. COND.	20	1050.0	26	1080.0	1.70
INTERM.	13 3/8	1880.0	17 1/2	1900.0	1.82
INTERM.	9 5/8	3630.0	12 1/4	3655.0	1.97

### MUD PROPERTIES

Depth below KB meter	Mud weight g/cm <sup>3</sup>	Viscosity	Mud type
490.000	1.10	50.0	WATER BASED
766.000	1.09	50.0	WATER BASED
1080.000	1.17	6.0	WATER BASED
1080.000	1.15	0.0	WATER BASED
1080.000	1.20	18.0	WATER BASED
1403.000	1.30	25.0	WATER BASED
1706.000	1.31	25.0	WATER BASED
1770.000	1.77	18.0	WATER BASED
1831.000	1.34	23.0	WATER BASED
1903.000	1.57	29.0	WATER BASED
2096.000	1.62	37.0	WATER BASED
3501.000	1.66	25.0	WATER BASED
3655.000	1.65	22.0	WATER BASED
3668.000	1.46	16.0	WATER BASED
3861.000	1.70	21.0	WATER BASED
4444.000	1.77	16.0	WATER BASED

## DRILL BIT CUTTINGS AND WET SAMPLES

SAMPLE TYPE	INTERVAL BELOW KB	NUMBER OF SAMPLES
Cutting	490-4477	700
Wet Samples	500-4477	900

## SHALLOW GAS

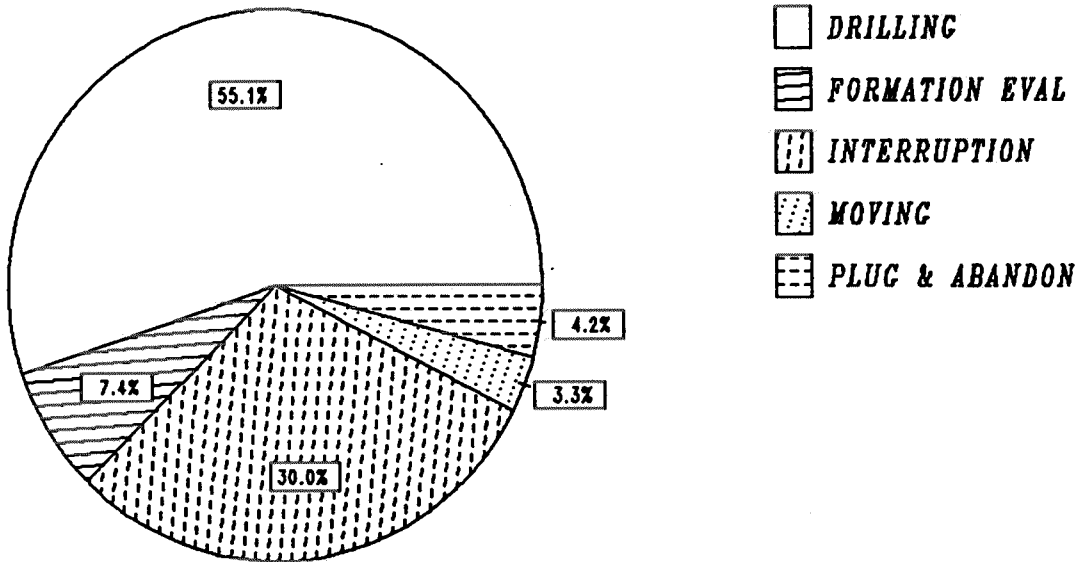
Interval below KB	REMARKS
----------------------	---------

## AVAILABLE LOGS

LOG TYPE	INTERVALS	1/200	1/500	Div.
LDL CNL GR	1047.000 - 1892.000	X	X	
LDL CNL GR	1878.000 - 3654.500	X	X	
LOG CNL GR	3625.000 - 4395.000	X	X	
DLL LSS	488.000 - 1078.000	X	X	
DLL LSS GR	1047.000 - 1895.500	X	X	
DLL MSFL LSS GR	1878.000 - 3650.500	X	X	
DLL MSFL LSS GR	3625.000 - 4473.500	X	X	
SHDT SLOW CHANNEL	3625.000 - 4450.000	X		
SHDT FAST CHANNEL	3625.000 - 4500.000	X		
CDM AP/SHDT	3625.000 - 4450.000		1:50	
CDM AP/SHDT	3625.000 - 4450.000	X		
CDM AP/SHDT-ANOMALIE	3625.000 - 4450.000	X		
RFT HP GAUGE	3860.000 - 4153.500		1:100	
CBL VDL GR	664.000 - 1878.000	X		
CBL VDL GR 9 5/8	2159.000 - 3625.000	X		
PRESS. PARAMETER	404.000 - 4475.000		1:5000	
WIREL. DATA PRESS.	404.000 - 4477.000		1:5000	
DRILL. DATA PRESS.	404.000 - 4477.000		1:5000	
TEMP. DATA LOG	404.000 - 4477.000		1:5000	
MUD	490.000 - 4447.000	X		
VELOCITY	517.000 - 4447.000		1:1000	X
(VSP, with sat, run 4A 1055-4450 m				1 stk.)
(VSP, rig shot, plot 1 & 3-10, 10cm/s				9 stk.)
(VSP, frequency, plot 2				1 stk.)
(VSP, composite geogram display 11-14, 10cm/s				4 stk.)
(Geogram, synthetic seismogram				8 stk.)

# DAILY DRILLING REPORT SYSTEM

Main operations for well : 6507/02 -01



Total : 2376.00 hours

Main operation	Minutes	Hours	% of total
DRILLING	78525	1308.75	55.08
FORMATION EVAL	10530	175.50	7.39
INTERRUPTION	42705	711.75	29.96
MOVING	4770	79.50	3.35
PLUG & ABANDON	6030	100.50	4.23

MAIN OPERATIONS FOR WELL : 6507 / 02 - 01

MAIN OPERATION : DRILLING

Sub operations	Minutes	Hrs	% of total
BOP ACTIVITIES	3270	54.50	4.16
BOP/WELLHEAD EQ	420	7.00	0.53
CASING	10980	183.00	13.98
CIRC/COND	4065	67.75	5.18
DRILL	40815	680.25	51.98
HOLE OPEN	1020	17.00	1.30
OTHER	90	1.50	0.11
PRESS DETECTION	375	6.25	0.48
REAM	1545	25.75	1.97
SURVEY	4125	68.75	5.25
TRIP	11820	197.00	15.05
<b>Total</b>	<b>78525</b>	<b>1308.75</b>	<b>100.00</b>

MAIN OPERATION : FORMATION EVAL

Sub operations	Minutes	Hrs	% of total
CIRC SAMPLES	30	0.50	0.28
CIRC/COND	840	14.00	7.98
CORE	270	4.50	2.56
LOG	5100	85.00	48.43
RFT/FIT	855	14.25	8.12
TRIP	3435	57.25	32.62
<b>Total</b>	<b>10530</b>	<b>175.50</b>	<b>100.00</b>

MAIN OPERATION : INTERRUPTION

Sub operations	Minutes	Hrs	% of total
FISH	12465	207.75	29.19
LOST CIRC	30	0.50	0.07
MAINTAIN/REP	17070	284.50	39.97
OTHER	1260	21.00	2.95
SIDETRACK	8460	141.00	19.81
WAIT	2625	43.75	6.15
WELL CONTROL	795	13.25	1.86
<b>Total</b>	<b>42705</b>	<b>711.75</b>	<b>100.00</b>

MAIN OPERATION : MOVING

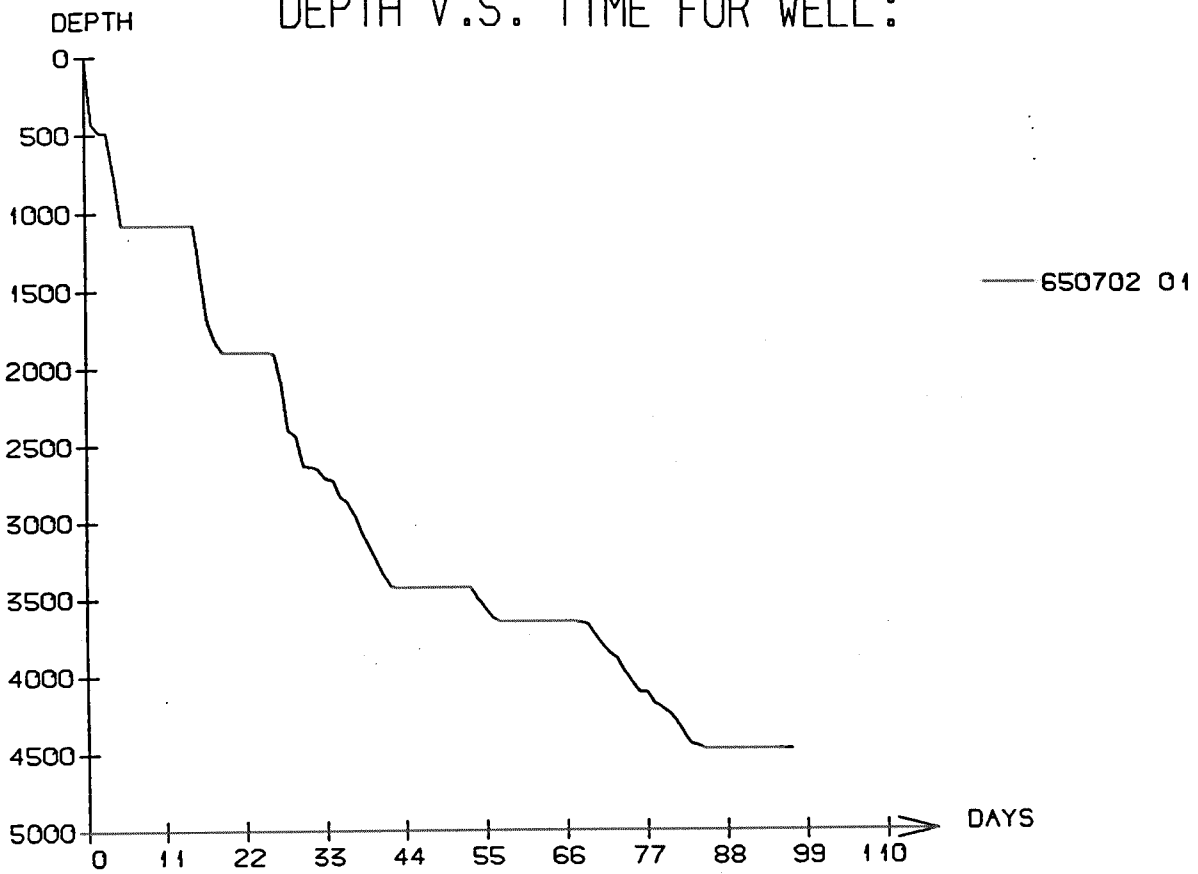
Sub operations	Minutes	Hrs	% of total
ANCHOR	3330	55.50	69.81
TRANSIT	1440	24.00	30.19
<b>Total</b>	<b>4770</b>	<b>79.50</b>	<b>100.00</b>

MAIN OPERATION : PLUG & ABANDON

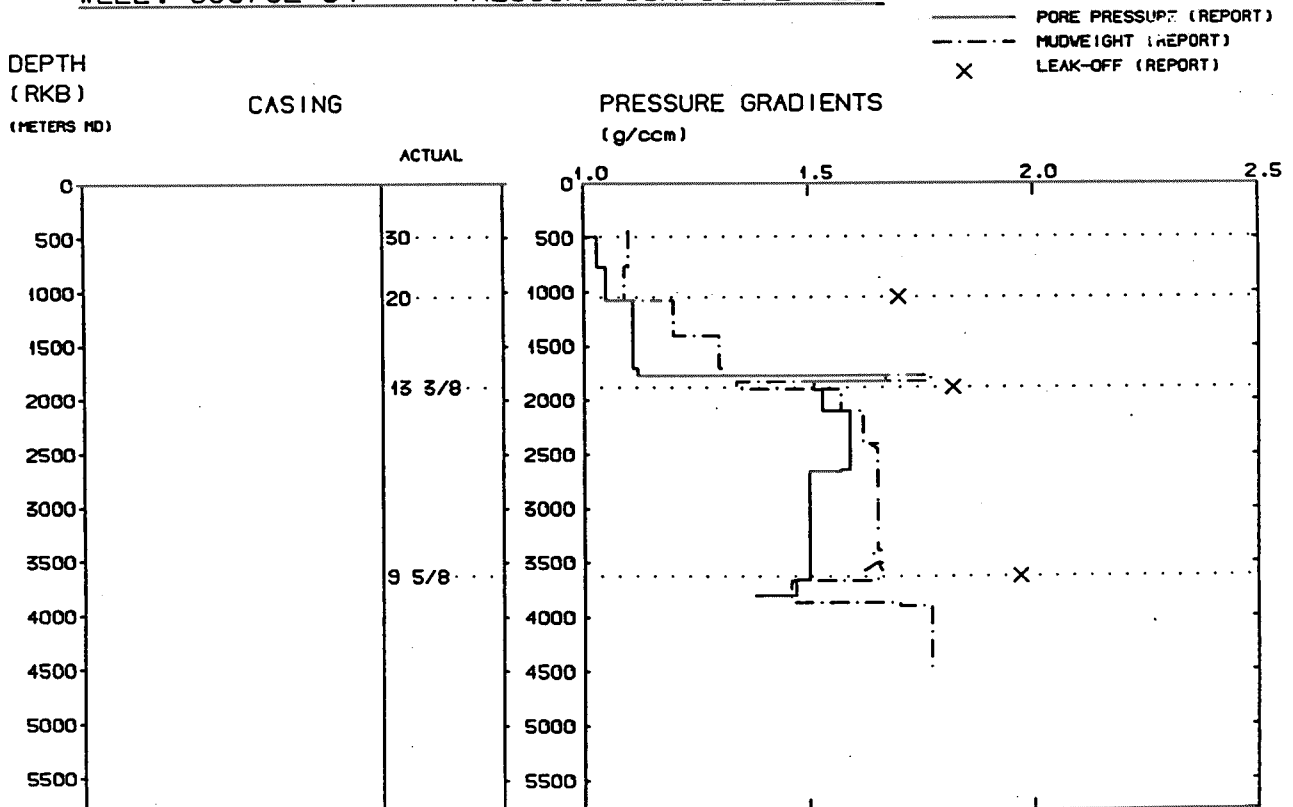
Sub operations	Minutes	Hrs	% of total
CEMENT PLUG	1350	22.50	22.39
CIRC/COND	15	0.25	0.25
CUT	675	11.25	11.19
EQUIP RECOVERY	1590	26.50	26.37
PERFORATE	330	5.50	5.47
SQUEEZE	375	6.25	6.22
TRIP	1590	26.50	26.37
WAIT	105	1.75	1.74
<b>Total</b>	<b>6030</b>	<b>100.50</b>	<b>100.00</b>

Total time used 2376.00 hrs

# DEPTH V.S. TIME FOR WELL:



## WELL: 650702 01 PRESSURE COMPOSITE PLOT



## Well History 6507/2-1

### GENERAL:

Well 6507/2-1 was designed to drill the North-eastern part of block 6507/2 on the Nordland Terrace, west of the Nordland Ridge. Primary objectives were to:

Test the hydrocarbon bearing potential of Middle- and Early Jurassic Sst sequences by testing an as complete as possible reservoir section without leaving large reserve volume updip.

Examine the possibilities of intra Cretaceous sand in the area.

Establish stratigraphy and sedimentological facies models.

Obtain reservoir data from both Cretaceous and Jurassic Sst sequences.

Middle Jurassic Fangst Group Sst was expected to come in at 3848 m RKB, and the Early Jurassic Tilje Fm at 4158 m Rkb. Prognosed TD at 4823 m, 50 m into Triassic sediments.

### OPERATIONS:

Wildcat well 6507/2-1 was spudded 24 June 1986 by Polar Frontier Drilling A/S semi-submersible rig Polar Pioneer and completed 29 September 1986 at a depth of 4477 m RKB in Triassic rocks. The Jurassic Sst were encountered slightly deeper than prognosed at 3858 m RKB. No cores were cut in this well. The well was terminated in Triassic claystones and siltstones.

The well was plugged and abandoned as a dry well.

### TESTING:

No DST-tests were performed in this well.

# GEOLOGICAL TOPS

WELL: 6507/2-1

Depth m (RKB)

Nordland Group	404,0
Naust Fm	404,0
Kai Fm	1431,0
Hordaland Group	1686,0
Brygge Fm	1686,0
Rogaland Group	1841,0
Tare Fm	1841,0
Tang Fm	1959,0
Shetland Group	2003,0
Cromer Knoll Group	2874,0
Lange Fm	2874,0
Lysing Fm	3425,0
Lange Fm	3490,0
Viking Group	3610,0
Spekk Fm	3610,0
Melke Fm	3615,0
Fangst Group	3858,0
Garn Fm	3858,0
Not Fm	3881,0
Ile Fm	3907,0
Båt Group	3929,0
Ror Fm	3929,0
Tilje Fm	3947,0
Åre Fm	3956,0
Triassic Group	4445,0
TD.	4477,0