

Well no : 34/08-02 Operator : HYDRO

Coordinates : 61 22 10.51 N UTM coord. : 6804208 N
 02 31 36.09 E 474697 E

Licence no : 120 Permit no : 522

Rig : POLAR PIONEER Rig type : SEMI-SUB.

Contractor : POLAR FRONTIER DRILLING A/S

Bottom hole temperature : deg.C Elev. KB : 23 M

Spud. date : 86.10.04 Water depth : 378 M

Compl. date : 86.11.17 Total depth : 3240 M

Spud. class : WILDCAT Form. at TD : TRIASSIC

Compl. class : P&A. DRY HOLE Prod. form :

Seisloca : NH 8404 - 271 SP. 465

LICENSEES

13.000000 NORSKE CONOCO A/S
 13.000000 ELF AQUITAINE NORGE A/S
 18.000000 NORSK HYDRO PRODUKSJON A.S
 6.000000 SAGA PETROLEUM A.S.
 50.000000 DEN NORSKE STATS OLJESELSKAP A.S

CASING AND LEAK-OFF TESTS

Type	Casing diam.	Depth below KB	Hole diam.	Hole depth below KB	Lot mud eqv. g/cm ³
CONDUCTOR	30	462.0	36	472.0	.
SURF.COND.	20	1177.0	26	1205.0	1.66
INTERM.	13 3/8	2680.0	17 1/2	2700.0	1.80

CONVENTIONAL CORES

Core no.	Intervals cored meters	Recovery M %	Series
1	3008.0 - 3020.0	12.0 100.0	

MUD PROPERTIES

Depth below KB meter	Mud weight g/cm ³	Viscosity	Mud type
376.000	1.70	34.0	WATER BASED
391.000	1.05	99.0	WATER BASED
420.000	1.70	34.0	WATER BASED
462.000	1.05	99.0	WATER BASED
1200.000	1.05	0.0	WATER BASED
1200.000	1.20	0.0	WATER BASED
1205.000	1.15	9.0	WATER BASED
1205.000	1.20	14.0	WATER BASED
1585.000	1.30	20.0	WATER BASED
2135.000	1.36	20.0	WATER BASED
2281.000	1.40	24.0	WATER BASED

2461.000	1.44	24.0	WATER BASED
2515.000	1.70	34.0	WATER BASED
2700.000	1.44	26.0	WATER BASED
2700.000	1.47	27.0	WATER BASED
2875.000	1.60	30.0	WATER BASED
3240.000	1.70	32.0	WATER BASED

DRILL BIT CUTTINGS AND WET SAMPLES

SAMPLE TYPE	INTERVAL BELOW KB	NUMBER OF SAMPLES
Cutting	1210-3240	420
Wet Samples	1220-3240	385

SHALLOW GAS

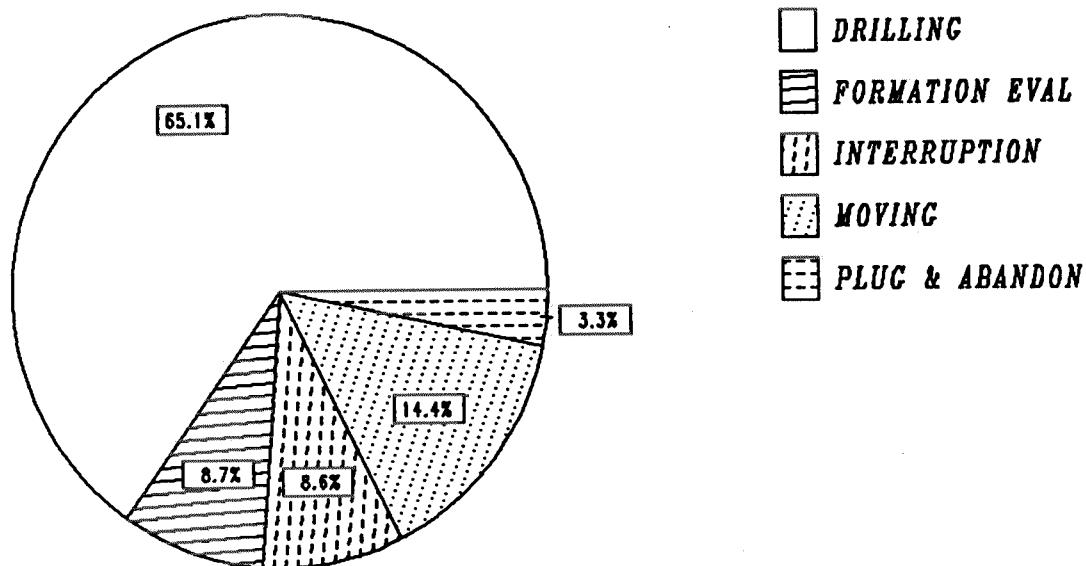
Interval below KB	REMARKS
----------------------	---------

AVAILABLE LOGS

LOG TYPE	INTERVALS	1/200	1/500	Div.
DIL LSS GR SP	1177.000 - 3228.000	X	X	
LDL CNL CAL/COMP	1177.000 - 3229.000	X	X	
SHDT GR	2682.000 - 3231.000	X		
CDM AP/SHDT MSD	2682.000 - 3230.000	X		
RFT HP GAUGE	3003.000 - 3218.000	X		
NGS	2682.000 - 3220.000	X	X	
CBL VDL	437.000 - 2682.000	X		
WIRELINE DATA PRESS.	372.000 - 2140.000			1:5000
DRILLING DATA PRESS.	376.000 - 3240.000			1:5000
MUD	1207.000 - 3240.000	X		
ADJUSTED CONT.VELOC.	1153.000 - 3212.000			1:1000 X
(Velocity,adjusted continous, 5-10 cm/s				2 stk.)
(Velocity,time/depth, 5-10cm/s				2 stk.)
(Velocity,drift curve				1 stk.)
(VSP, zero offset,plot 1-8, 5-10-20 cm/s				8 stk.)
(Synthetic seismogram, 8A-11B, 10-20 cm/s				8 stk.)

DAILY DRILLING REPORT SYSTEM

Main operations for well : 0034/08 -02



Total : 1224.00 hours

Main operation	Minutes	Hours	% of total
DRILLING	47820	797.00	65.11
FORMATION EVAL	6360	106.00	8.66
INTERRUPTION	6300	105.00	8.58
MOVING	10560	176.00	14.38
PLUG & ABANDON	2400	40.00	3.27

MAIN OPERATIONS FOR WELL : 0034 / 08 - 02

MAIN OPERATION : DRILLING

Sub operations	Minutes	Hrs	% of total
BOP ACTIVITIES	1260	21.00	2.63
BOP/WELLHEAD EQ	2490	41.50	5.21
CASING	5685	94.75	11.89
CIRC/COND	1110	18.50	2.32
DRILL	23895	398.25	49.97
HOLE OPEN	2280	38.00	4.77
OTHER	15	0.25	0.03
PRESS DETECTION	90	1.50	0.19
REAM	1140	19.00	2.38
SURVEY	150	2.50	0.31
TRIP	9705	161.75	20.29
Total	47820	797.00	100.00

MAIN OPERATION : FORMATION EVAL

Sub operations	Minutes	Hrs	% of total
CIRC SAMPLES	105	1.75	1.65
CIRC/COND	495	8.25	7.78
CORE	405	6.75	6.37
LOG	2760	46.00	43.40
RFT/FIT	375	6.25	5.90
TRIP	1305	21.75	20.52
WAIT	915	15.25	14.39
Total	6360	106.00	100.00

MAIN OPERATION : INTERRUPTION

Sub operations	Minutes	Hrs	% of total
FISH	645	10.75	10.24
MAINTAIN/REP	840	14.00	13.33
OTHER	3825	63.75	60.71
WAIT	990	16.50	15.71
Total	6300	105.00	100.00

MAIN OPERATION : MOVING

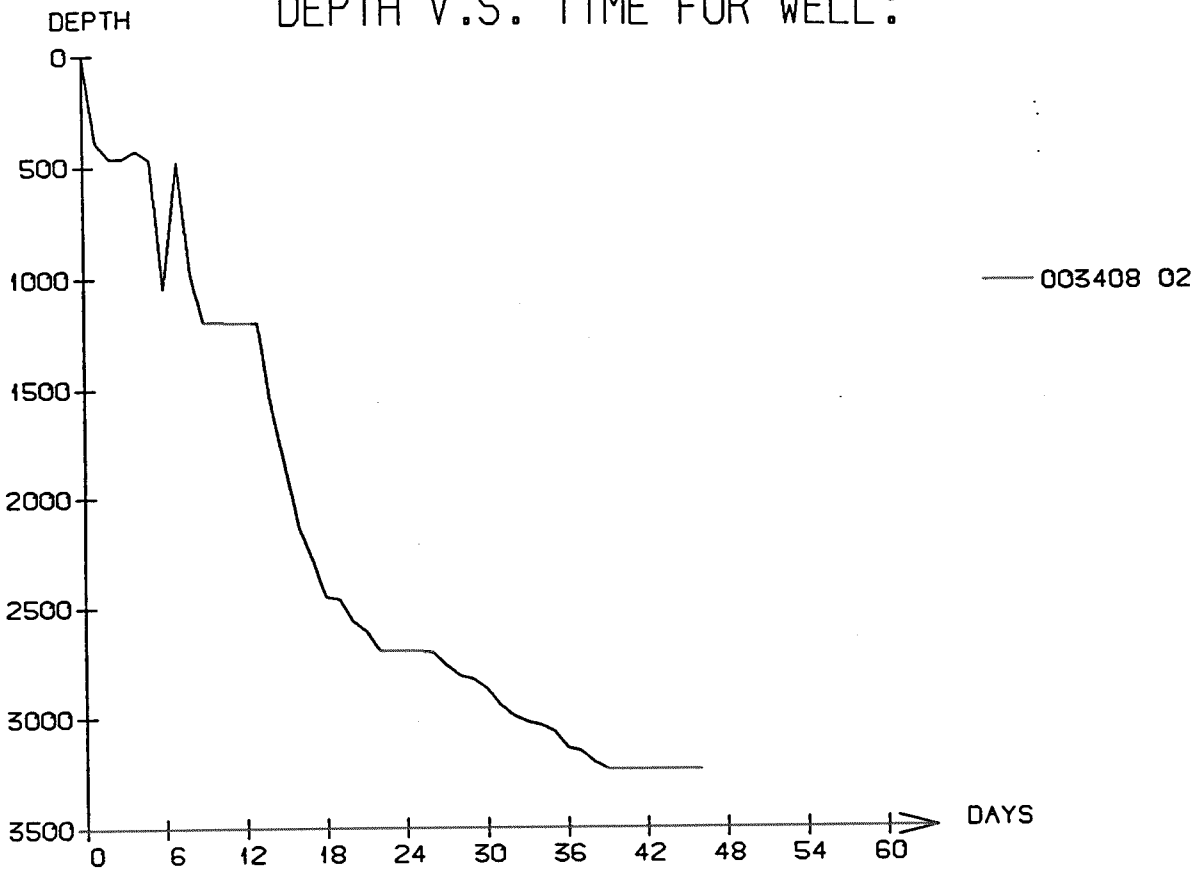
Sub operations	Minutes	Hrs	% of total
ANCHOR	1935	32.25	18.32
TRANSIT	8625	143.75	81.68
Total	10560	176.00	100.00

MAIN OPERATION : PLUG & ABANDON

Sub operations	Minutes	Hrs	% of total
CEMENT PLUG	390	6.50	16.25
CUT	30	0.50	1.25
EQUIP RECOVERY	210	3.50	8.75
TRIP	1275	21.25	53.13
WAIT	495	8.25	20.62
Total	2400	40.00	100.00

Total time used 1224.00 hrs

DEPTH V.S. TIME FOR WELL:

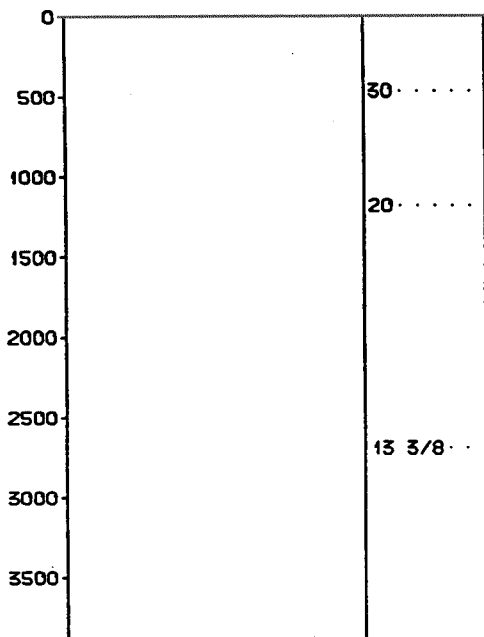


WELL: 003408 02 PRESSURE COMPOSITE PLOT

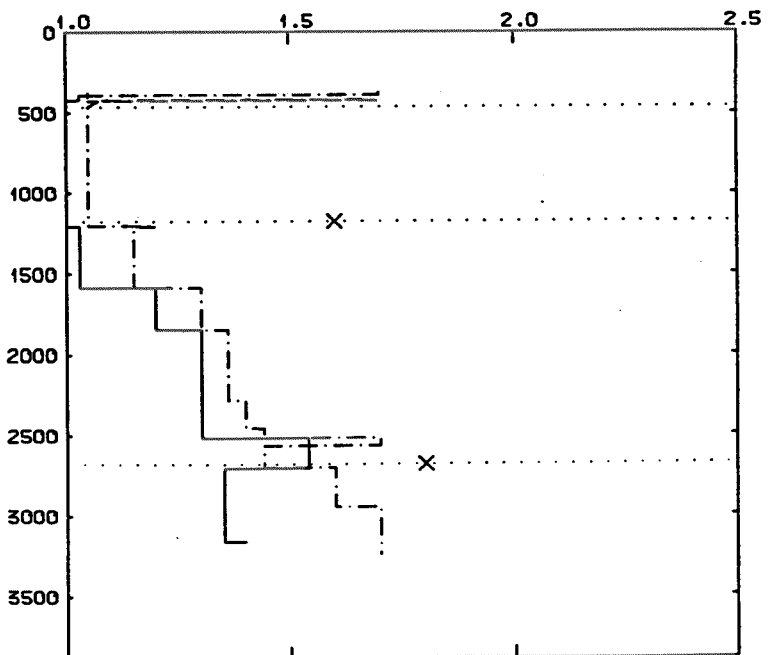
DEPTH
(RKB)
(METERS MD)

CASING

ACTUAL



PRESSURE GRADIENTS
(g/ccm)



Well History 34/8-2

GENERAL:

Well 34/8-2 was drilled on the northern part of the main prospect "A" in the block. The prospect is defined by a main rotated fault block flanking the Viking Graben with a Jurassic-Triassic sequence dipping towards WNW. The prospect is separated in a northern and southern part by a fault. This fault might be sealing and hence forming two separate prospects, the A-north and A-south respectively. The main objectives of the well were:

- Prove possible hydrocarbon accumulation within the Statfjord Formation in the northern part of the structure.
- Drill on a location where the sealing capacity of the faultplane separating the A-north and A-south prospects could be tested.
- Drill on a location which would leave uncommercial hydrocarbon reserves untested updip of the well in the Statfjord Formation.

OPERATIONS:

Appraisal well 34/8-2 was spudded 4 October 1986 by Polar Frontier Drilling A/S semi-submersible rig Polar Pioneer and completed 17 November 1986 at a depth of 3240 m in Jurassic/Triassic rocks. There were some problems in the beginning and the well had to be respudded twice. The first re-spud was due to the fact that the hole was lost on the first connection. The second re-spud was due to the fact that two joints of the cement stinger were cemented inside the casing. After this, drilling proceeded without significant problems.

One core was taken in the well in the upper part of the Statfjord Formation in the interval 3008 - 3020 m. There was no sign of hydrocarbons in the well.

The well is plugged and abandoned as a dry hole. This means that the northern part of the main prospect in the block is dry.

TESTING:

No DST tests were performed in this well.

GEOLOGICAL TOPS

WELL: 34/8-2

Depth m (RKB)

<i>Nordland Group</i>	376.0
<i>Utsira Fm.</i>	1112.0
<i>Hordaland Group</i>	1160.0
<i>Rogaland Group</i>	1817.0
<i>Balder Fm.</i>	1817.0
<i>Sele Fm.</i>	1853.0
<i>Lista Fm.</i>	1902.0
<i>Våle Fm.</i>	1953.0
<i>Shetland Group</i>	1988.0
<i>Hardråde Fm.</i>	1988.0
<i>Jorsalfare Fm.</i>	2305.0
<i>Kyrre Fm.</i>	2682.0
<i>Cromer Knoll Group</i>	2882.0
<i>Sola Fm.</i>	2882.0
<i>Viking Group</i>	2896.0
<i>Draupner Fm.</i>	2896.0
<i>Dunlin Group</i>	2912.0
<i>Drake Fm.</i>	2912.0
<i>Amundsen Fm.</i>	2939.0
<i>Statfjord Fm.</i>	3001.0
<i>Hegre Group</i>	3103.0
<i>Lunde Fm.</i>	3103.0
<i>T.D.</i>	3240.0