

WELL NO: 34/8-2

OPERATOR: NORSK HYDRO PRODUKSJON A.S
LICENSE NO: 120

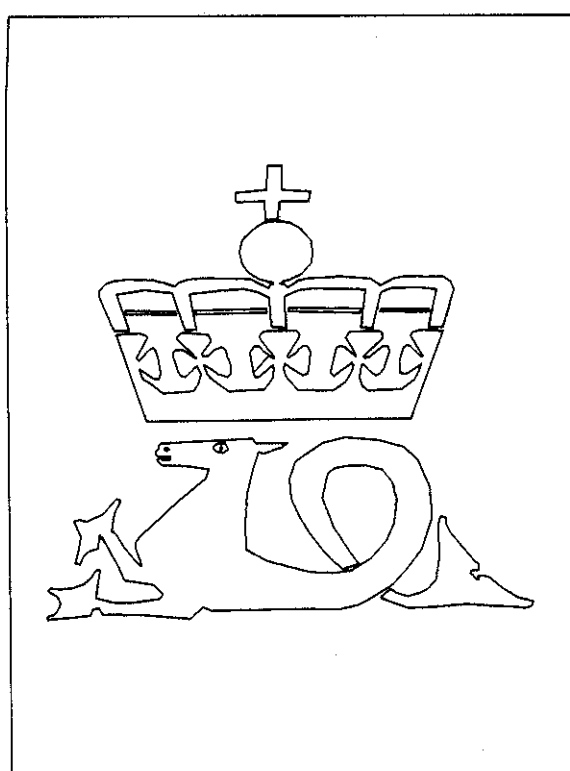
TOTAL DEPTH: 3240 M RKB
KBE: 23 M
WATER DEPTH: 378 M

COORDINATES: 61°22'10.51"N/02°31'36.09"E
DATUM: ED50
SPUD CLASSIF.: WILDCAT
COMPL. CLASSIF.: P&A. DRY HOLE

SPUD DATE: 86.10.04
COMPL. DATE: 86.11.17
RIG: POLAR PIONEER

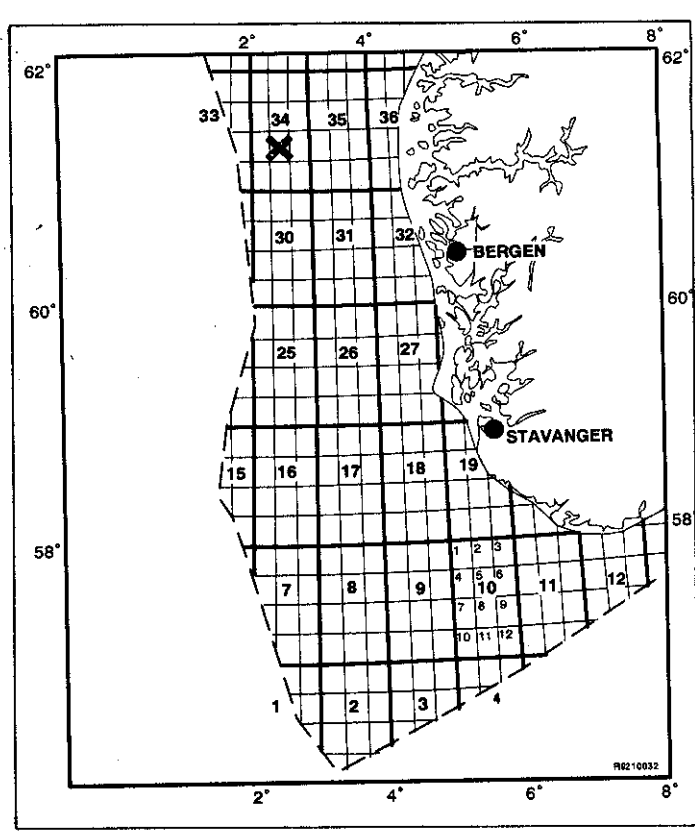
LICENSE GROUP:

NORSKE CONOCO A/S 13.000 %
ELF AQUITAINE NORGE A/S 13.000 %
NORSK HYDRO PRODUKSJON A.S 18.000 %
SAGA PETROLEUM A.S. 6.000 %
DEN NORSKE STATS OLJESELSKAP A.S 50.000 %



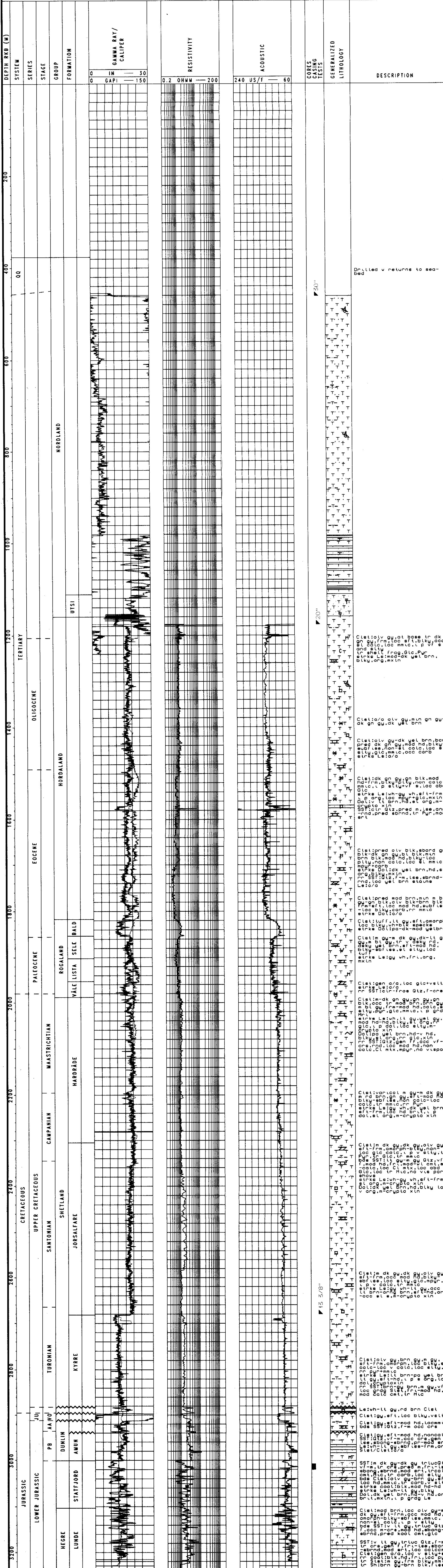
OLJEDIREKTORATET

LOCATION MAP



COMPLETION LOG

scale 1: 4000



Drilled v returns to seabed.

Clet:olv gu,ot base tr dk
 gnd frn,loc est,dk,mod gu,
 est,dk,loc mnt,lt p,vf,oc
 and shell frog,dk,Pur
 strike L:mod,dk vel brn,
 loku,org,xin

Clet:o,olv gu,mn an gu-
 dk an gu,dk vel brn

Clet:olv gu,dk vel brn,brn
 pred,dk an gu,mod hd,dk,brn
 est,lv,dk,mod,dk,mod,dk,brn
 strike L:o

Clet:dk an gu,gn blk,mod
 hd,frn,dk,mod,dk,mod,dk,
 gnd,dk,mod,dk,mod,dk,brn
 strike L:uh-gu,wh,est-frn,
 Dolt:vt,brn,dk,at org,m-
 gnd,dk,mod,dk,mod,dk,brn
 and,pred,brnd,fr Pur,mod
 est

Clet:pred olv blk,eband an
 blk,dk an gu,mod,dk,brn,dk,
 gnd,dk,mod,dk,mod,dk,brn
 strike L:dk,mod,dk,mod,dk,
 mod,dk,mod,dk,mod,dk,brn
 strike L:dk,mod,dk,mod,dk,
 mod,dk,mod,dk,mod,dk,brn
 strike L:dk,mod,dk,mod,dk,
 mod,dk,mod,dk,mod,dk,brn
 strike L:o

Clet:uff,lt,gu,est,omorph
 strike Dolt:pa-dk,mod vel brn

Clet:m gu,dk gu,dk-lt an
 gu,dk,mod,dk,mod,dk,brn
 strike L:dk,mod,dk,mod,dk,
 mod,dk,mod,dk,mod,dk,brn
 strike L:gu,wh,fr,org,
 mkn

Clet:gan o,lv,loc gnd,velly
 strike L:o

Clet:dk an gu,gn blk,mod
 hd,frn,dk,mod,dk,mod,dk,
 gnd,dk,mod,dk,mod,dk,brn
 strike L:uh-gu,wh,est-frn,
 Dolt:vt,brn,dk,at org,m-
 gnd,dk,mod,dk,mod,dk,brn
 and,pred,brnd,fr Pur,mod
 est

Clet:olv gu,dk gu,dk-lt an
 gu,dk,mod,dk,mod,dk,brn
 strike L:dk,mod,dk,mod,dk,
 mod,dk,mod,dk,mod,dk,brn
 strike L:gu,wh,fr,org,
 mkn

Clet:olv gu,dk gu,dk-lt an
 gu,dk,mod,dk,mod,dk,brn
 strike L:dk,mod,dk,mod,dk,
 mod,dk,mod,dk,mod,dk,brn
 strike L:gu,wh,fr,org,
 mkn