

Well no : 16/ 7-04 Operator : ESSO

Coordinates : 58 17 09.75 N UTM coord. : 6461117 N
 02 01 30.07 E 442828 E

Licence no : 072 Permit no : 347

Rig : GLOMAR BISCAY II

Contractor : GLOBAL MARINE DRILLING COMPANY

Bottom hole temperature : 88 deg.C Elev. KB : 25 M

Spud. date : 82.10.15 Water depth : 78 M

Compl. date : 82.12.06 Total depth : 2781 M

Spud. class : WILDCAT Form. at TD : TRIASSIC

Compl. class : P&A. GAS/COND. DISC. Prod. form :

Seisloca : ST 8122-732 SP 317

LICENSEES

40,000 ESSO NORGE A.S
 10,000 NORSK HYDRO PRODUKSJON A.S
 50,000 DEN NORSKE STATS OLJESELSKAP A.S

CASING AND LEAK-OFF TESTS

Type	Casing diam.	Depth below KB	Hole diam.	Hole depth below KB	Lot mud eqv. g/cm
CONDUCTOR	30	165,0	36	165,0	
SURF.COND.	20	458,0	26	473,0	1,62
INTERM.	13 3/8	1277,4	17 1/2	1293,0	1,80
INTERM.	9 5/8	2271,0	12 1/4	2286,0	1,87
LINER	7	2776,0	8 1/2	2781,0	

CONVENTIONAL CORES

Core no.	Intervals cored meters	Recovery		Series
		M	%	
1	2568.0 - 2588.0	5.4	27.0	L.CRETACEOUS
2	2591.0 - 2607.0	16.0	100.0	L.CRETACEOUS
3	2607.0 - 2625.0	17.5	97.2	L.CRETACEOUS
4	2625.0 - 2643.5	18.5	100.0	L.CRETACEOUS
5	2643.5 - 2662.5	19.0	100.0	L.CRETACEOUS
6	2662.5 - 2681.5	18.3	96.3	L.CRETACEOUS

DRILL STEM TEST									
TEST NO	DEPTH BELOW KB	CHOKE SIZE mm	RECOVERY					PRESS. (psi)	
			OIL Sm ³ /d	GAS M Sm ³ /d	OIL GRAV. g/cm ³	GAS GRAV. rel. air	GCR m ³ /m ³	FSIP	WHP
1	2590 - 2597	16.7	231 *	385.2	0.75*	0.79	1667		1889
2	2525 - 2535	16.7	275 *	473.0	0.74*	0.80	1720		2208

* = CONDENSAT

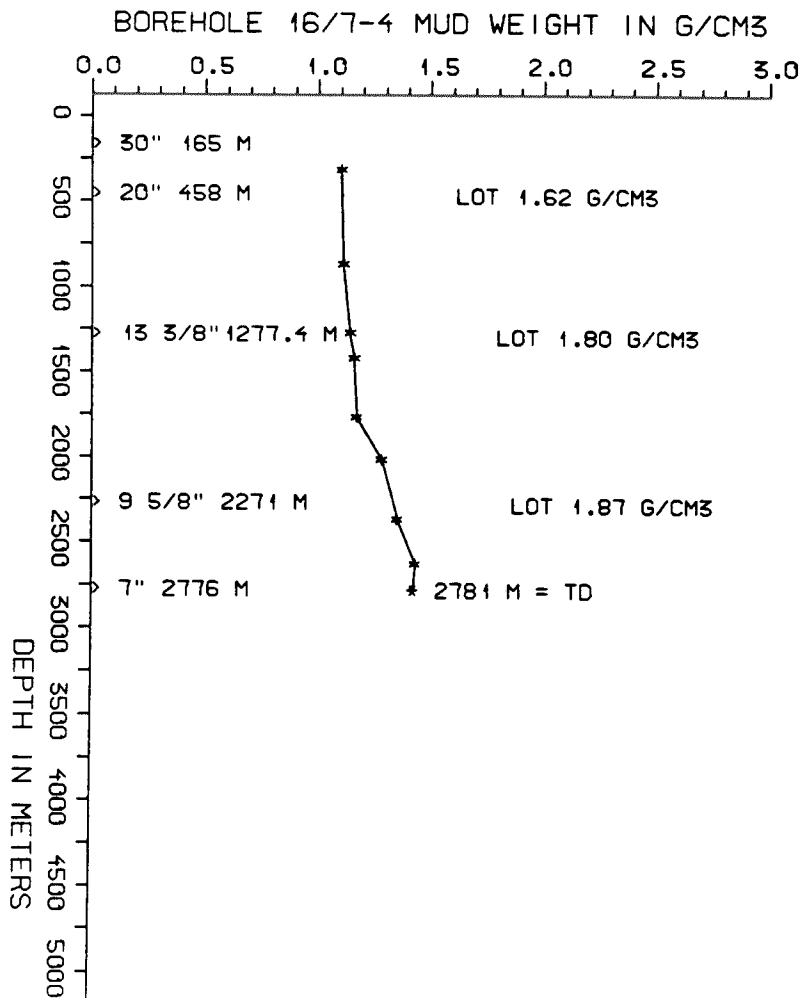
AVAILABLE LOGS				
LOG TYPE	INTERVALS	1/200	1/500	
IEL BHC AC GR	165 - 471	x	x	
IEL BHC AC	458 - 1290	x	x	
IEL BHC AC	1280 - 2283	x	x	
IEL BHC AC	2270 - 2590	x	x	
IEL BHC AC	2270 - 2642	x	x	
IEL BHC AC	2450 - 2679	x	x	
IEL BHC AC	2270 - 2778	x	x	
CDL CNL	1278 - 2285	x	x	
CDL CNL	2269 - 2779	x	x	
DLL MLL	2500 - 2779	x	x	
CALIPER	165 - 472	x	x	
CALIPER	458 - 1156	x	x	
CDM	1700 - 2285	x		
CDM	2267 - 2779	x		
CDM AP	1700 - 2285	x	x	
CDM AP	2267 - 2779	x	x	
TEMPERATURE	110 - 1250	1:1000		
TEMPERATURE	140 - 1840	1:1000		
FMT	2523 - 2743		x	
CBL VDL	2100 - 2707	x		
VELOCITY (S.C.L.)	165 - 2778		x	

(Geogram Synthetic Seismogram, 10 cm/s-n/p, min/zero phase, 2stk)
(VSP, stacked data, nor/rev. polarity, plot 1 - 12, 1stk)
(VSP, raw data, plot 1 - 10, 1stk)

MUD PROPERTIES			
DEPTH BELOW KB m	WEIGHT g/cm3	FUNNEL VISC. sec	FILTRATE LOSS cm3
250	1.07	40	
800	1.08	38	
1200	1.11	38	
1350	1.13	42	
1700	1.14	45	
1950	1.25	48	
2300	1.32	45	
2560	1.40	46	

DRILL BIT CUTTINGS AND WET SAMPLES		
SAMPLE TYPE	INTERVAL BELOW KB	NUMBER OF SAMPLES
CUTTINGS	170 - 2780	440
WET SAMPLES	170 - 2780	520

SHALLOW GAS	
DEPTH INTERVAL m KB	REMARKS
	NONE



WELL HISTORY - 16/7-4

GENERAL :

The main objective of well 16/7-4 was to test the presence of a structural trap in the Jurassic/Triassic sandstones in the south-western corner of block 16/7. This is located 6 km. east of the 15/9-15 gas discovery. Gas was proven and tested in sandstones of Jurassic/Triassic age.

OPERATIONS :

Well 16/7-4 was spudded 15.10.82 by the drilling rig "Glomar Biscay II". Operations went forth without incident. 6 cores were taken in the 8 1/2" section.

TESTING :

Two zones were tested. Both tests flowed gas and condensate. Samples of gas and condensate were collected at separator conditions during each test. Water, other than condensation of water vapor, was not produced. The CO₂ content was between 0.3 and 0.4 %. H₂S was not detected. The first flow durated 744 minutes. DST no. 2 flowed for 570 minutes.

GEOLOGICAL TOPS

WELL: 16/7-4

	Depth m (RKB)
Nordland Group	103 m
Utsira Fm	848 m
Hordaland Group	1061 m
Rogaland Group	2052 m
Balder Fm	2052 m
Sele Fm	2098,5 m
Lista Fm	2166 m
Montrose Group	2220 m
Maureen Fm	2220 m
Chalk Group	2229 m
Ekofisk Fm	2229 m
Tor Fm	2238 m
Hod Fm	2408 m
Plenus Marl Fm	2465 m
Cromer Knoll Group	2493 m
Viking Group	2520 m
Draupne Fm	2520 m
Skagerak Fm	2521,5 m
	<u>TD = 2781 m</u>