

Well no : 6507/07-06

Operator : CONOCO

Coordinates : 65 21 30.03 N
07 19 10.35 E

UTM coord. : 7249616 N
421821 E

Licence no : 95

Permit no : 524

Rig : NORTRYM

Rig type : SEMI-SUB.

Contractor : GOLAR-NOR OFFSHORE A/S

Bottom hole temperature : deg.C

Elev. KB : 25 M

Spud. date : 86.07.23

Water depth : 351 M

Compl. date : 86.09.06

Total depth : 2525 M

Spud. class : APPRAISAL

Form. at TD : E.JURASSIC

Compl. class : P&A. OIL/GAS DISC.

Prod. form : JURASSIC

Seisloca :

LICENSEES

10.000000 ARCO NORGE A/S
 30.000000 NORSKE CONOCO A/S
 50.000000 DEN NORSKE STATS OLJESELSKAP A.S
 10.000000 TENNECO OIL NORWAY A/S

CASING AND LEAK-OFF TESTS

Type	Casing diam.	Depth below KB	Hole diam.	Hole depth below KB	Lot mud eqv. g/cm3
CONDUCTOR	30	473.0	36	474.0	.
SURF.COND.	20	1024.0	26	1030.0	1.52
INTERM.	13 3/8	2080.0	17 1/2	2087.0	1.66
INTERM.	9 5/8	2510.0	12 1/4	2525.0	.

CONVENTIONAL CORES

Core no.	Intervals cored meters	Recovery		Series
		M	%	
1	2129.0 - 2157.0	28.0	100.0	
2	2157.0 - 2185.0	28.0	100.0	
3	2305.0 - 2306.6	1.6	100.0	
4	2315.0 - 2341.9	26.9	100.0	
5	2344.0 - 2364.5	19.2	93.7	
6	2364.5 - 2390.5	26.0	92.5	
7	2392.5 - 2405.0	12.1	96.8	
8	2405.0 - 2419.8	14.8	100.0	
9	2424.0 - 2441.0	18.0	100.0	
10	2442.0 - 2460.3	18.3	100.0	

MUD PROPERTIES

Depth below KB meter	Mud weight g/cm3	Viscosity	Mud type
419.000	1.03	0.0	WATERBASED
1030.000	1.14	20.0	WATERBASED

1303.000	1.16	17.0	WATERBASED
1769.000	1.38	24.0	WATERBASED
1836.000	1.39	30.0	WATERBASED
2050.000	1.42	27.0	WATERBASED
2080.000	1.26	0.0	WATERBASED
2087.000	1.44	28.0	WATERBASED
2305.000	1.27	0.0	WATERBASED
2525.000	1.26	0.0	WATERBASED

DRILL STEM TEST

INTERVALS AND PRESSURES

Test no	interval meter	Choke size	Pressure (PSI)		
			WHP	BTHP	FFP
1.0	2424.000 - 2411.500	35.9	544.7	3650.2	3448.3
	Test temperature: 83.3 °C				
2.0	2348.500 - 2365.000	52.4	374.5	3583.4	1917.2
	Test temperature: 78.9 °C				

RECOVERY

Test no.	Oil Sm3/d	Gas Sm3/d	Oil grav. g/cm3	Gas grav. rel. air	GOR m3/m3
1.0	781	4610	0.918	0.617	342
2.0	628	610	0.895	0.614	1029

DRILL BIT CUTTINGS AND WET SAMPLES

SAMPLE TYPE	INTERVAL BELOW KB	NUMBER OF SAMPLES
Cutting	1040-2524	180
Wet Samples	1040-2524	240

SHALLOW GAS

Interval below KB	REMARKS
-------------------	---------

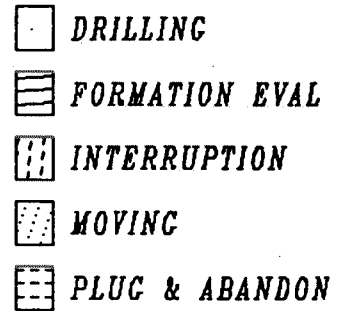
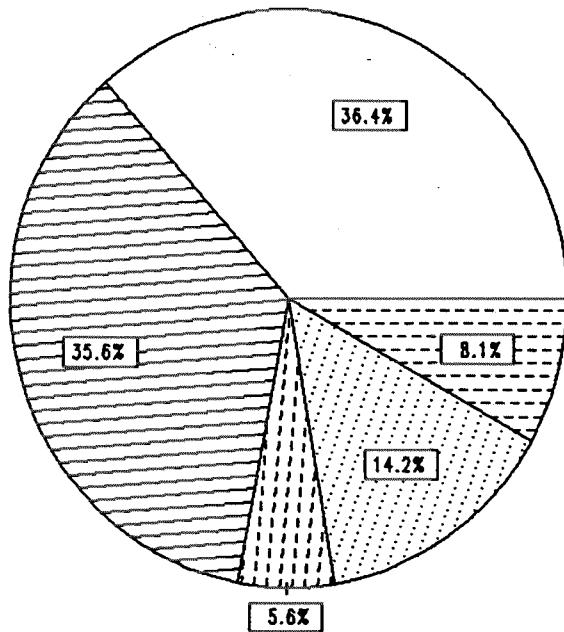
AVAILABLE LOGS

LOG TYPE	INTERVALS	1/200	1/500	Div.
DIL SLS GR SP	2079.000 - 2574.000	X	X	
LDL CNL NGL	2079.000 - 2525.000	X	X	
DLL MSFL GR	2079.000 - 2521.500	X	X	
CDM AP/SHDT MSD	530.000 - 1359.000			X
CDM AP/SHDT MSD	2085.000 - 2523.000	X		
SHDT HOLE GEOMETRY	2079.000 - 2524.000	X		
SHDT FAST CHANNEL	2079.000 - 2524.000	X		

RFT STRAIN GAUGE	2149.000 - 2504.000	X	1:100
RFT HP GAUGE	2149.000 - 2504.000	1:100	
NGT RATIOS	2079.000 - 2525.000	X	X
NGT	2140.000 - 2509.000	X	
CBL VDL GR CCL	496.000 - 2045.500	X	
CBL VDL GR CCL	1700.000 - 2478.000	X	
DRILL. DATA PRESS.	375.000 - 2525.000	1:5000	
TEMP. DATA LOG	375.000 - 2525.000	1:5000	
PRESSURE DATA PLOT	1030.000 - 2525.000	1:5000	
MUD LOG	1030.000 - 2525.000		X
VELOCITY	2079.000 - 2526.000	1:1000X	
(VSP, SAT. 1800-2475m.		1 stk.)	
(VSP, plot 1-7 + E-G		10 stk.)	
(VSP, composite geogram display, plot A-D		4 stk.)	
(Geogram, synthetic seismogram.		6 stk.)	

DAILY DRILLING REPORT SYSTEM

Main operations for well : 6507/07 -06



Total : 1296.00 hours

Main operation	Minutes	Hours	% of total
DRILLING	28320	472.00	36.42
FORMATION EVAL	27690	461.50	35.61
INTERRUPTION	4350	72.50	5.59
MOVING	11070	184.50	14.24
PLUG & ABANDON	6330	105.50	8.14

MAIN OPERATIONS FOR WELL : 6507 / 07 - 06

MAIN OPERATION : DRILLING

Sub operations	Minutes	Hrs	% of total
BOP ACTIVITIES	2460	41.00	8.69
BOP/WELLHEAD EQ	840	14.00	2.97
CASING	4890	81.50	17.27
CIRC/COND	1380	23.00	4.87
DRILL	11280	188.00	39.83
OTHER	990	16.50	3.50
REAM	150	2.50	0.53
SURVEY	540	9.00	1.91
TRIP	5790	96.50	20.44
Total	28320	472.00	100.00

MAIN OPERATION : FORMATION EVAL

Sub operations	Minutes	Hrs	% of total
CIRC/COND	540	9.00	1.95
CORE	5070	84.50	18.31
DST	9480	158.00	34.24
LOG	1980	33.00	7.15
OTHER	1980	33.00	7.15
RFT/FIT	60	1.00	0.22
TRIP	8580	143.00	30.99
Total	27690	461.50	100.00

MAIN OPERATION : INTERRUPTION

Sub operations	Minutes	Hrs	% of total
FISH	2100	35.00	48.28
MAINTAIN/REP	870	14.50	20.00
OTHER	540	9.00	12.41
WAIT	840	14.00	19.31
Total	4350	72.50	100.00

MAIN OPERATION : MOVING

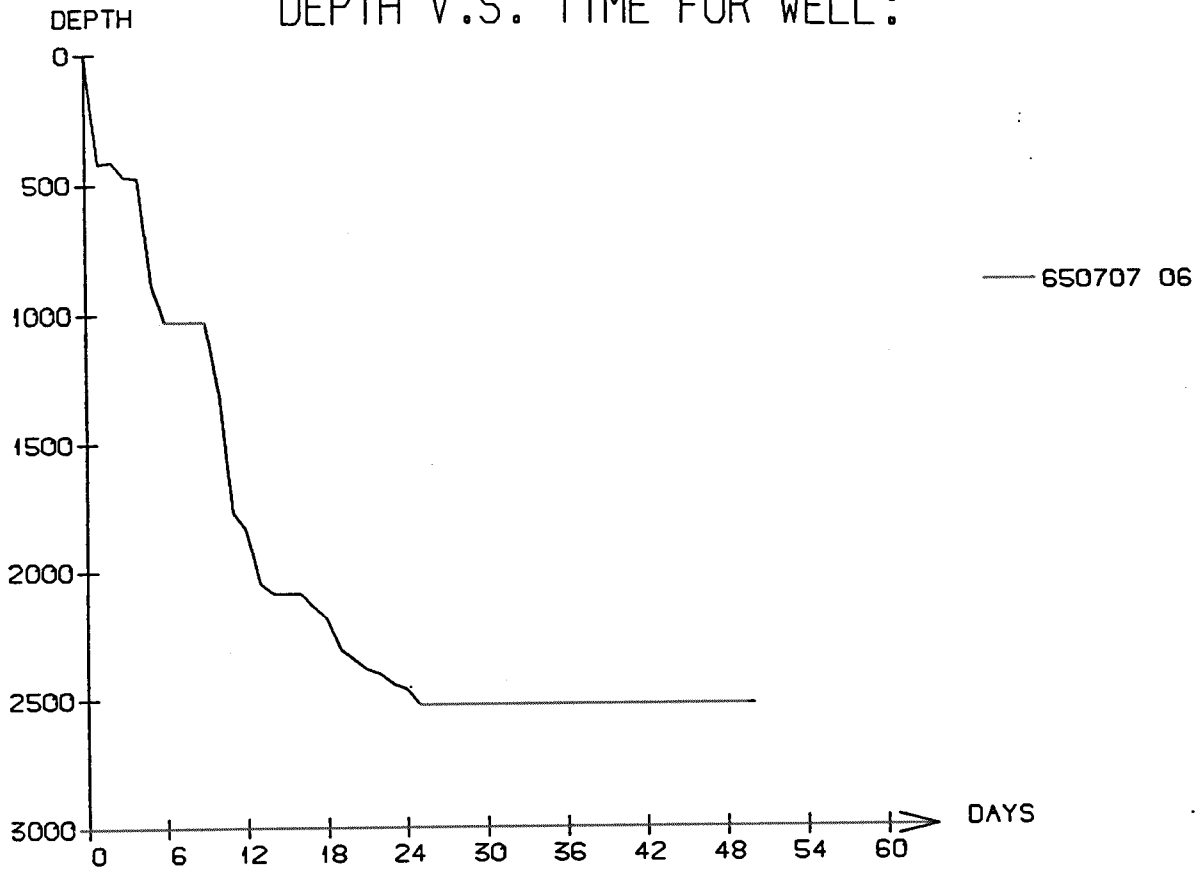
Sub operations	Minutes	Hrs	% of total
ANCHOR	2250	37.50	20.33
TRANSIT	8820	147.00	79.67
Total	11070	184.50	100.00

MAIN OPERATION : PLUG & ABANDON

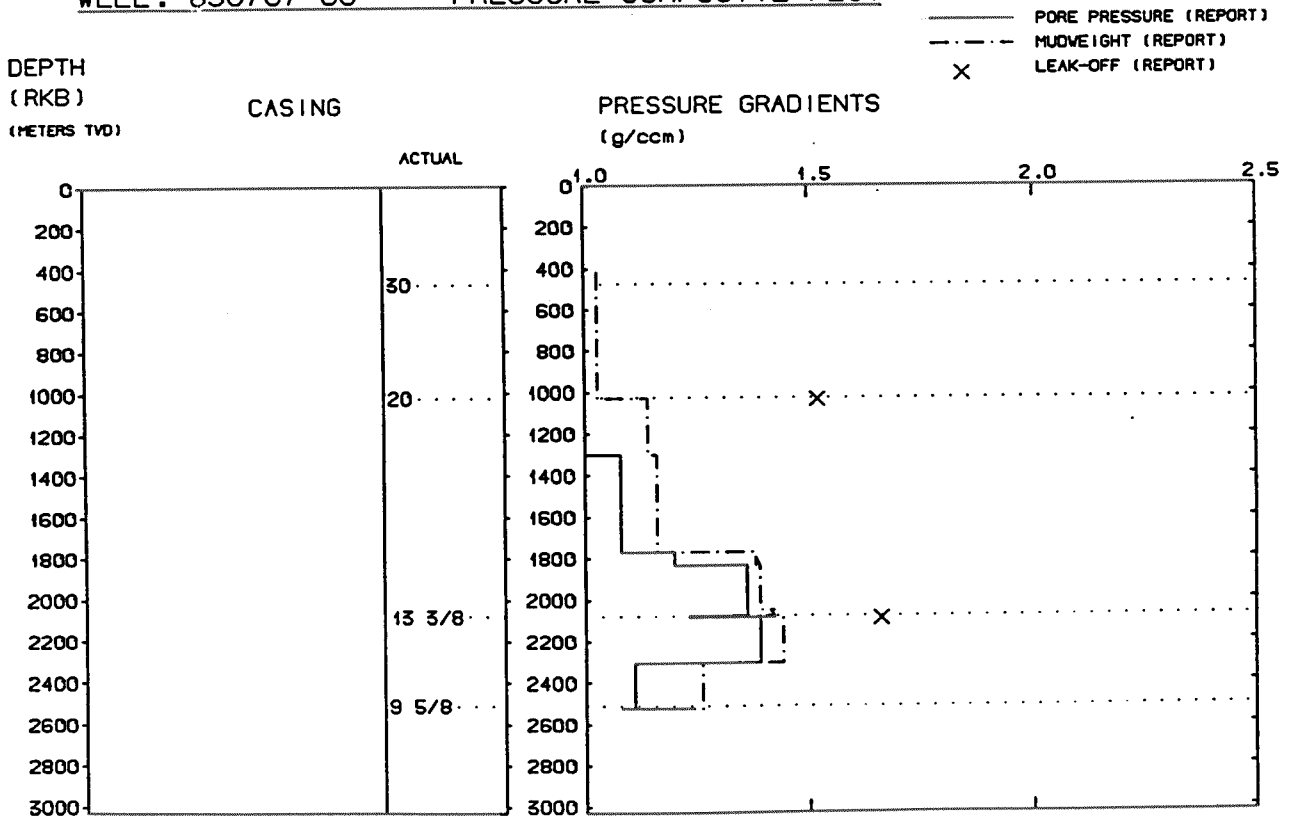
Sub operations	Minutes	Hrs	% of total
CEMENT PLUG	120	2.00	1.90
EQUIP RECOVERY	1860	31.00	29.38
OTHER	2580	43.00	40.76
PERFORATE	180	3.00	2.84
SQUEEZE	210	3.50	3.32
TRIP	1380	23.00	21.80
Total	6330	105.50	100.00

Total time used 1296.00 hrs

DEPTH V.S. TIME FOR WELL:



WELL: 650707 06 PRESSURE COMPOSITE PLOT



Well History 6507/7-6

GENERAL:

Well 6507/7-6 was drilled in the Heidrun field on Haltenbanken, and was located at the crest of the Heidrun field. The structure is a fault wedge. The main objectives were to establish the Tilje gas/oil contact, define Tilje and Åre oil properties and investigate the Åre oil and oil/water contact. In addition, the well was expected to prove Fangst erosion and established lateral continuity of Tilje reservoir properties.

OPERATIONS:

Appraisal well 6507/7-6 was spudded 23 July 1986 by Norcem Drilling A/S semi-submersible rig Nortrym and completed 6 September 1986 in Early Jurassic rocks. At 419 m the drill string torqued up and spun out five joints below the kelly, dropping the string to the seabed. The well was respudded after being moved approximately 8 m, and this time drilling proceeded without significant problems.

2 cores were cut in the interval 2129 - 2185 m, and 8 cores were cut in the interval 2305 - 2462 m. The Ile Formation came in at 2144.5 m, 14.5 m deeper than prognosed.

RFT-data indicates the gas/oil contact at 2339 m, 21 m deeper than prognosed, and the oil/water contact at 2438 m, 13 m higher than prognosed.

The well was plugged and abandoned as an oil and gas well.

TESTING:

2 DST tests were performed in this well. One was in Åre Fm. in the interval 2411.5 - 2424 m, and the second in Tilje Fm. in the interval 2348 - 2365 m.

GEOLOGICAL TOPS

WELL: 6507/7-6

Depth m (RKB)

<i>Nordland Group</i>	<i>375.0</i>
<i>Naust Fm.</i>	<i>375.0</i>
<i>Kai Fm.</i>	<i>1495.0</i>
<i>Hordaland Group</i>	<i>1852.0</i>
<i>Brygge Fm.</i>	<i>1852.0</i>
<i>Rogaland Group</i>	<i>1935.0</i>
<i>Tare Fm.</i>	<i>1935.0</i>
<i>Tang Fm.</i>	<i>1967.0</i>
<i>Shetland Group</i>	<i>2016.0</i>
<i>Fangst Group</i>	<i>2144.5</i>
<i>Ile Fm.</i>	<i>2144.5</i>
<i>Båt Group</i>	<i>2158.5</i>
<i>Tofte Fm.</i>	<i>2158.5</i>
<i>Tilje Fm.</i>	<i>2189.5</i>
<i>Åre Fm.</i>	<i>2369.0</i>
<i>T.D.</i>	<i>2525.0</i>