

Well no : 6507/08-01

Operator : STATOIL

Coordinates : 65 18 35.03 N  
07 20 52.80 EUTM coord. : 7244164 N  
423003 E

Licence no : 124

Permit no : 529

Rig : DYVI DELTA

Rig type : SEMI-SUB.

Contractor : DYVI OFFSHORE A/S

Bottom hole temperature : deg.C

Elev. KB : 29 M

Spud. date : 86.10.28

Water depth : 342 M

Compl. date : 86.12.09

Total depth : 2600 M

Spud. class : WILDCAT

Form. at TD : E.JURASSIC

Compl. class : P&amp;A. OIL/GAS DISC.

Prod. form : JURASSIC

Seisloca : CN 8502 - 518 SP. 127

## LICENSEES

-----

10.000000 ARCO NORGE A/S  
 15.000000 NORSKE CONOCO A/S  
 5.000000 DET NORSKE OLJESELSKAP AS  
 10.000000 NORSK HYDRO PRODUKSJON A.S  
 50.000000 DEN NORSKE STATS OLJESELSKAP A.S  
 10.000000 TENNECO OIL NORWAY A/S

## CASING AND LEAK-OFF TESTS

Type	Casing diam.	Depth below KB	Hole diam.	Hole depth below KB	Lot mud eqv. g/cm3
CONDUCTOR	30	444.0	36	610.0	.
INTERM.	13 3/8	1033.0	17 1/2	1050.0	1.64
INTERM.	9 5/8	2217.0	12 1/4	2235.0	1.60
LINER	7	2598.5	8 1/2	2600.0	.

## CONVENTIONAL CORES

Core no.	Intervals cored meters	Recovery		Series
		M	%	
1	2249.0 - 2262.0	00.0	000.0	
2	2262.0 - 2272.3	10.3	100.0	MIDDLE JURASSIC
3	2290.0 - 2314.5	24.5	98.1	MIDDLE JURASSIC
4	2316.0 - 2344.0	27.8	99.3	MIDDLE JURASSIC
5	2369.0 - 2387.0	18.0	100.0	LOWER JURASSIC
6	2398.0 - 2411.6	13.6	100.0	LOWER JURASSIC
7	2417.0 - 2434.3	17.3	100.0	LOWER JURASSIC
8	2439.0 - 2467.0	28.0	100.0	LOWER JURASSIC
9	2467.0 - 2494.8	27.8	100.0	LOWER JURASSIC

## MUD PROPERTIES

Depth below KB meter	Mud weight g/cm3	Viscosity	Mud type
-----	-----	-----	-----

1053.000	1.12	6200.0	WATER BASED
1398.000	1.14	6300.0	WATER BASED
2131.000	1.35	5500.0	WATER BASED
2217.000	1.20	9999.0	WATER BASED
2217.000	1.21	9999.0	WATER BASED
2217.000	1.20	1500.0	WATER BASED
2235.000	1.35	5000.0	WATER BASED
2262.000	1.20	3600.0	WATER BASED

### DRILL STEM TEST

#### INTERVALS AND PRESSURES

Test no	interval meter	Choke size	Pressure (PSI)		
			WHP	BTHP	FFP
1.0	2444.000 - 2463.000 Test temperature: 84.9 °C	11.1	559.8	3697.0	3273.4
2.0	2386.400 - 2405.400 Test temperature: 81 °C	12.7	847.0	3644.0	3374.9

#### RECOVERY

Test no.	Oil Sm <sup>3</sup> /d	Gas Sm <sup>3</sup> /d	Oil grav. g/cm <sup>3</sup>	Gas grav. rel. air	GOR m <sup>3</sup> /m <sup>3</sup>
1.0	268	13770	0.933	0.600	14
2.0	508	28910	0.918	0.615	76

### DRILL BIT CUTTINGS AND WET SAMPLES

SAMPLE TYPE	INTERVAL BELOW KB	NUMBER OF SAMPLES
Cutting	1050-2600	180
Wet Samples	1050-2600	160

### SHALLOW GAS

Interval below KB	REMARKS

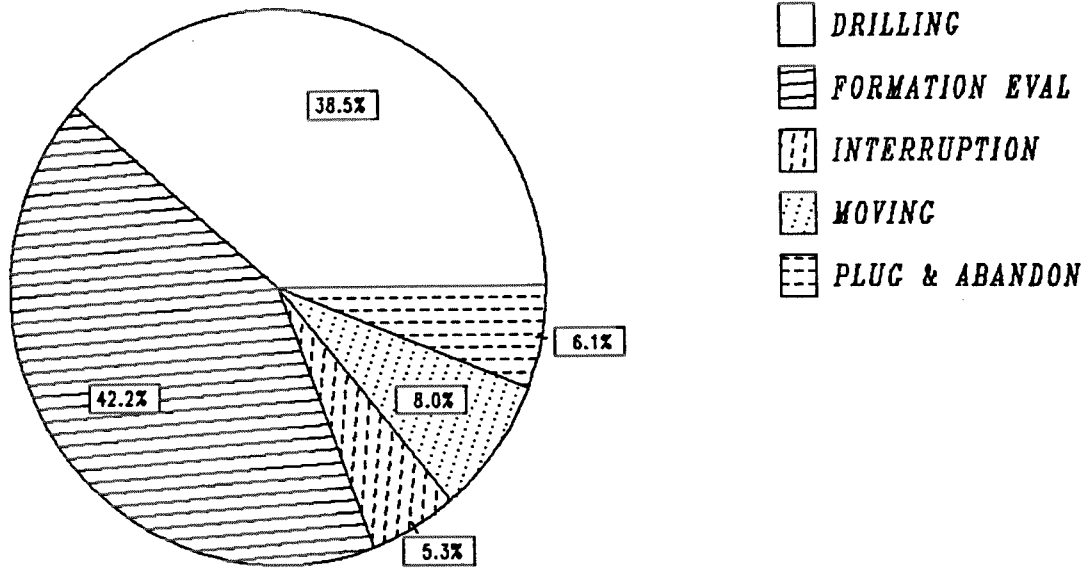
### AVAILABLE LOGS

LOG TYPE	INTERVALS	1/200	1/500	Div.
LDL CNL SGR	2217.000 - 2600.500	X	X	
DLL MSFL GR	2217.000 - 2597.000	X	X	
DIL STC SP	1185.000 - 2596.000	X	X	
DITE	1185.000 - 2217.000			X
SDT	1185.000 - 2217.000			X
DITE SDT	2217.000 - 2597.000	X	X	
SHDT	2217.000 - 2600.000	X		

CDM AP/SHDT MSD	2218.000 - 2597.000	X	X
RFT STRAIN GAUGE	2250.000 - 2580.000		
HP GAUGE	2250.000 - 2580.000		
NGT	2220.000 - 2591.000	X	
NGS	2217.000 - 2600.000	X	
CBL VDL GR	900.000 - 2214.000	X	
CBL VDL GR	2063.000 - 2552.000	X	
CBL VDL GR	2240.000 - 2421.000	X	
DRILLING DATA PRESS.	371.000 - 2600.000	1:5000	
WIRELINE DATA PRESS.	390.000 - 2600.000	1:5000	
PRESSURE PARAMETER	371.000 - 2600.000	1:5000	
PRESSURE EVALUATION	400.000 - 2600.000	1:5000	
TEMPERATURE DATA	1050.000 - 2600.000	1:5000	
MUD	1053.000 - 2600.000		X
VELOCITY	2217.000 - 2600.000	1:1000	X
(VSP, run 1a, 1000-2600m		2 stk.)	
(VSP, run 2b, 1500-2545m		1 stk.)	
(VSP, composite geogram display, 10cm/s		2 stk.)	
(Geogram, synthetic seismogram, 10cm/s		6 stk.)	

# DAILY DRILLING REPORT SYSTEM

Main operations for well : 6507/08 -01



Total : 1080.00 hours

Main operation	Minutes	Hours	% of total
DRILLING	24930	415.50	38.47
FORMATION EVAL	27330	455.50	42.18
INTERRUPTION	3450	57.50	5.32
MOVING	5160	86.00	7.96
PLUC & ABANDON	3930	65.50	6.06

MAIN OPERATIONS FOR WELL : 6507 / 08 - 01

MAIN OPERATION : DRILLING

Sub operations	Minutes	Hrs	% of total
BOP ACTIVITIES	540	9.00	2.17
BOP/WELLHEAD EQ	2070	34.50	8.30
CASING	7260	121.00	29.12
CIRC/COND	1410	23.50	5.66
DRILL	6510	108.50	26.11
HOLE OPEN	1590	26.50	6.38
REAM	330	5.50	1.32
SURVEY	270	4.50	1.08
TRIP	4950	82.50	19.86
<b>Total</b>	<b>24930</b>	<b>415.50</b>	<b>100.00</b>

MAIN OPERATION : FORMATION EVAL

Sub operations	Minutes	Hrs	% of total
CIRC/COND	600	10.00	2.20
CORE	3360	56.00	12.29
DST	9930	165.50	36.33
LOG	4830	80.50	17.67
OTHER	270	4.50	0.99
RFT/FIT	780	13.00	2.85
TRIP	7560	126.00	27.66
<b>Total</b>	<b>27330</b>	<b>455.50</b>	<b>100.00</b>

MAIN OPERATION : INTERRUPTION

Sub operations	Minutes	Hrs	% of total
FISH	1440	24.00	41.74
MAINTAIN/REP	690	11.50	20.00
WAIT	1320	22.00	38.26
<b>Total</b>	<b>3450</b>	<b>57.50</b>	<b>100.00</b>

MAIN OPERATION : MOVING

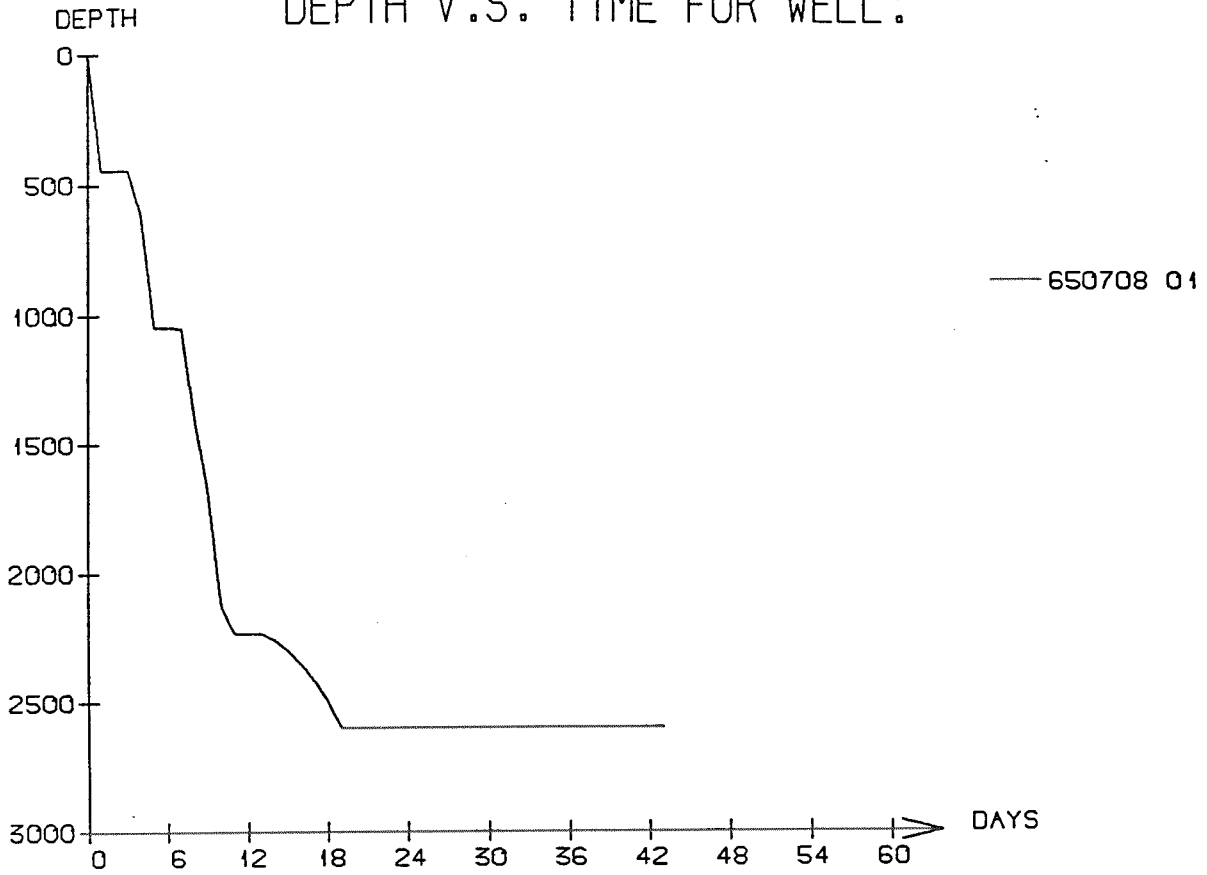
Sub operations	Minutes	Hrs	% of total
ANCHOR	3480	58.00	67.44
TRANSIT	1680	28.00	32.56
<b>Total</b>	<b>5160</b>	<b>86.00</b>	<b>100.00</b>

MAIN OPERATION : PLUG & ABANDON

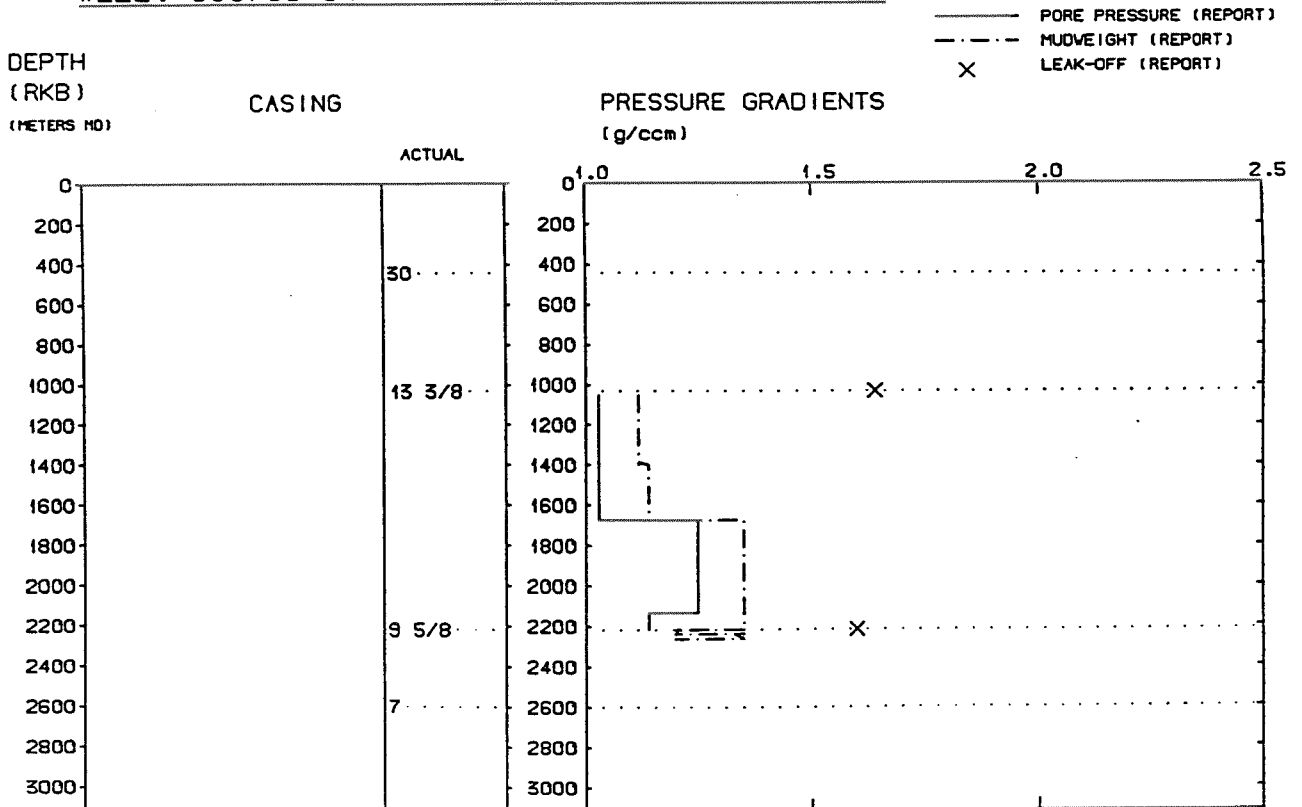
Sub operations	Minutes	Hrs	% of total
CEMENT PLUG	330	5.50	8.40
CIRC/COND	120	2.00	3.05
CUT	390	6.50	9.92
EQUIP RECOVERY	1050	17.50	26.72
PERFORATE	150	2.50	3.82
TRIP	1350	22.50	34.35
WAIT	540	9.00	13.74
<b>Total</b>	<b>3930</b>	<b>65.50</b>	<b>100.00</b>

Total time used 1080.00 hrs

# DEPTH V.S. TIME FOR WELL:



## WELL: 650708 01 PRESSURE COMPOSITE PLOT



## Well History 6507/8-1.

### GENERAL:

Well-6507/8-1 was drilled on the extended area of Heidrun field into the block. Primary objective was to ascertain that the Heidrun field extended into the 6507/8 block and to verify reserve calculations. Secondary objectives were to verify geological model and structural interpretation, and define oil-water contact in the Tilje Fm. It was also intended to get more information on reservoir characteristics and hydrocarbon fluids, and maximum input of data for reservoir simulation studies.

Fangst Group was expected to come in at 2245 m RKB, and Tilje Fm at 2340 m RKB. Prognosed TD was 2590 m RKB.

### OPERATIONS:

Wildcat well 6507/8-1 was spudded 28 October 1986 by Dyvi Offshore A/S semi-submersible rig Dyvi Delta and completed 9 Desember 1986 at a depth of 2600 m in Early Jurassic rocks, 41 m into the Åre Fm. Drilling proceeded without any significant problems.

Middle Jurassic Sst, Fangst Group, was penetrated at 2248 m RKB and Early Jurassic Sst, Tilje Fm, at 2386,5 m RKB. These reservoir sandstones were found to be hydrocarbon bearing with a gas/oil contact at 2312 m RKB and an oil/water contact at 2480 m RKB. A total of 9 cores were cut in the 8 1/2" hole section.

The well is plugged and abandoned as a gas/oil discovery.

### TESTING:

Two DST-tests were performed in the Tilje Fm.

# GEOLOGICAL TOPS

WELL: 6507/8-1

Depth m (RKB)

<i>Nordland Group</i>	379,0
<i>Naust Fm</i>	379,0
<i>Kai Fm</i>	1462,0
<i>Hordaland Group</i>	1885,0
<i>Brygge Fm</i>	1885,0
<i>Rogaland Group</i>	1970,0
<i>Tare Fm</i>	1970,0
<i>Tang Fm</i>	2020,0
<i>Shetland Group</i>	2060,0
<i>Viking Group</i>	2233,0
<i>Meelke Fm</i>	2233,0
<i>Fangst Group</i>	2248,0
<i>Garn Fm</i>	2248,0
<i>Not Fm</i>	2295,0
<i>Ile Fm</i>	2307,5
<i>Båt Group</i>	2323,5
<i>Ror Fm</i>	2323,5
<i>Tilje Fm</i>	2386,5
<i>Åre Fm</i>	2559,0
<i>TD.</i>	2600,0