

Well no : 30/11-04

Operator : SHELL

Coordinates	: 60 02 43.96 N 02 32 39.47 E	UTM coord.	: 6656726 N 474615 E
Licence no	: 035	Permit no	: 402
Rig	: DYVI DELTA	Rig type	: SEMI-SUB.
Contractor	: DYVI OFFSHORE A/S		
Bottom hole temperature	: 160 deg.C	Elev. KB	: 29 M
Spud date	: 84.01.25	Water depth	: 110 M
Compl. date	: 84.07.24	Total depth	: 5255 M
Spud class.	: WILDCAT	Age at TD	: TRIASSIC
Compl. class.	: P&A. OIL DISCOVERY		
Seis. loc.	: 83 - 36 SP. 284		

LICENSEES

100.000 A/S NORSKE SHELL

CASING AND LEAK-OFF TESTS

Type	Casing diam.	Depth below KB	Hole diam.	Hole depth below KB	Lot mud eqv. g/cm ³
-----	-----	-----	-----	-----	-----
CONDUCTOR	30	239.0	36	250.0	
SURF.COND.	20	796.0	26	812.0	1.10
INTERM.	13 3/8	2362.0	17 1/2	2375.0	1.79
INTERM.	9 5/8	4192.0	12 1/4	4205.0	1.94
LINER	7	5046.0	8 1/2	5059.0	2.09
OPEN HOLE			5 7/8	5255.0	

CONVENTIONAL CORES

Core no.	Intervals cored meters	Recovery		Series
		M	%	
-----	-----	-----	-----	-----
1	3514.0 - 3532.0	17.5	97.2	MIDDLE JURASSIC
2	4635.0 - 4649.0	10.7	76.4	LOWER JURASSIC
3	4652.0 - 4666.0	12.8	91.4	LOWER JURASSIC
4	4839.0 - 4839.4	0.4	100.0	LOWER JURASSIC
5	5011.0 - 5011.4	0.4	100.0	LOWER JURASSIC

MUD PROPERTIES

Depth below KB meter	Mud weight g/cm ³	Plastic viscosity mPa.s	Mud type
512.0	1.06	5.0	WATER BASED
817.0	1.07	16.0	WATER BASED
1019.0	1.08	14.0	WATER BASED
1310.0	1.10	16.0	WATER BASED
1694.0	1.09	14.0	WATER BASED
2041.0	1.10	14.0	WATER BASED
2460.0	1.20	19.0	WATER BASED
3875.0	1.25	24.0	WATER BASED
4205.0	1.26		WATER BASED
4219.0	1.30		WATER BASED
4310.0	1.35		WATER BASED
4563.0	1.55	26.0	WATER BASED
4652.0	1.60	24.0	WATER BASED
4692.0	1.58	20.0	WATER BASED
4899.0	1.59	23.0	WATER BASED
5069.0	1.58	23.0	WATER BASED
5086.0	1.56	27.0	WATER BASED
5195.0	1.58	28.0	WATER BASED

DRILL STEM TEST

INTERVALS AND PRESSURES

Test no.	Interval meter	Choke size	Pressure (PSI)		
			FSIP	BTHP	FFP
1.0	5029.0 - 5015.0				
2.1*	4837.0 - 4823.0				
2.2*	4875.0 - 4854.0				

RECOVERY

Test no.	Oil Sm ³ /d	Gas M Sm ³ /d	Oil grav. g/cm ³	Gas grav. rel. air	GOR m ³ /m ³
1.0	NO SIGNIFICANT FLOW				
2.1*	NO SIGNIFICANT FLOW				
2.2*					

* - BOTH INTERVALS TESTED AT THE SAME TIME

DRILL BIT CUTTINGS AND WET SAMPLES

SAMPLE TYPE	INTERVAL BELOW KB	NUMBER OF SAMPLES
-------------	----------------------	----------------------

CUTTINGS

WET SAMPLES	260 - 5255	1365
-------------	------------	------

SHALLOW GAS

INTERVAL
BELOW KB

REMARKS

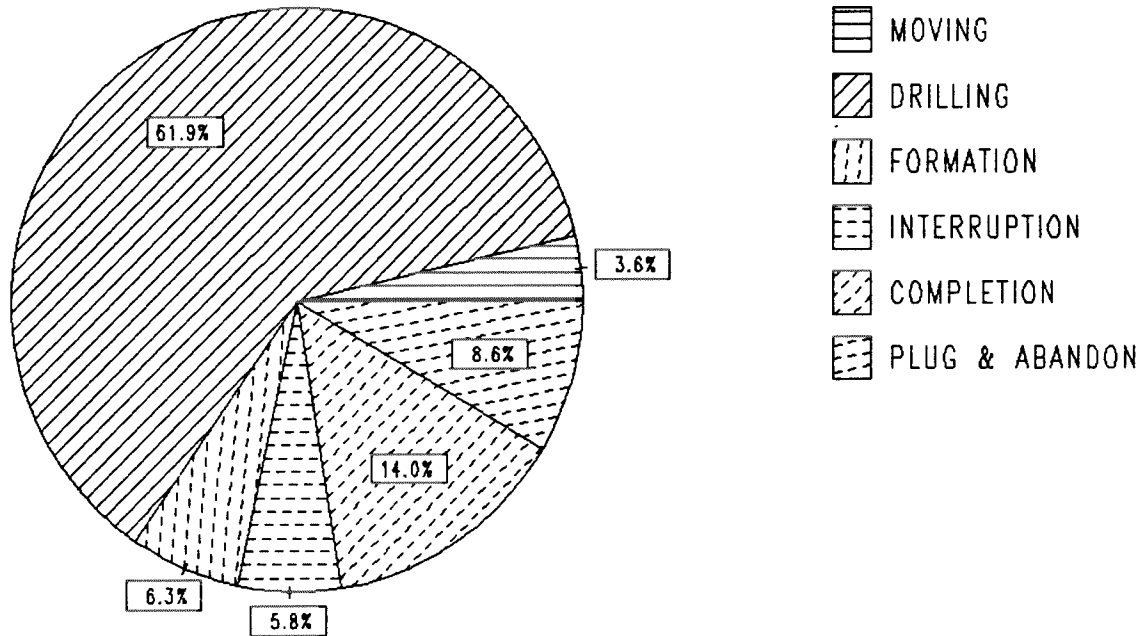
NONE

AVAILABLE LOGS

LOG TYPE	INTERVALS	1/200	1/500
ISF BHC GR	239 - 812	X	X
ISF BHC	812 - 2333	X	X
ISF BHC	2364 - 4202	X	X
ISF	4202 - 4847	X	X
ISF BHC	4201 - 5059	X	X
LDL CNL	239 - 813	X	X
LDL CNL NGS	2320 - 4030	X	X
LDL CNL	4204 - 4841	X	X
LDL CNL	4600 - 5058	X	X
LDL CNL	5051 - 5224	X	X
CDM	3050 - 4201	X	X
CDM	4200 - 5062	X	X
CDM AP	3051 - 4200	X	X
CDM AP	4203 - 5063	X	X
DLL MSFL	2363 - 4200	X	X
DLL MSFL	4600 - 5058	X	X
DLL MSFL	5051 - 5221	X	X
NGS	2320 - 4030	X	X
BGT	796 - 2331	X	X
RFT	2607 - 3915	X	
RFT	4644 - 5064	1:100	
RFT	5073 - 5203	1:100	
CBL VDL CCL	248 - 2351	X	
CBL VDL	1050 - 4202	X	
CBL VDL	3428 - 4202	X	
CBL VDL	136 - 3800	X	
VELOCITY	239 - 5059	1:1000	X
(+ Airgun Well Velocity Survey and Calibr. log data			1 stk)
(+ Two Way Travel Time, 10 cm/s,			1 stk)
(+ Synthetic Seismogram, Marine, 10 cm/s,			1 stk)
(+ Synthetic Seismogram, 10 cm/s,			2 stk)
(+ V.S.P., 10 cm/s,			9 stk)

DAILY DRILLING REPORT SYSTEM

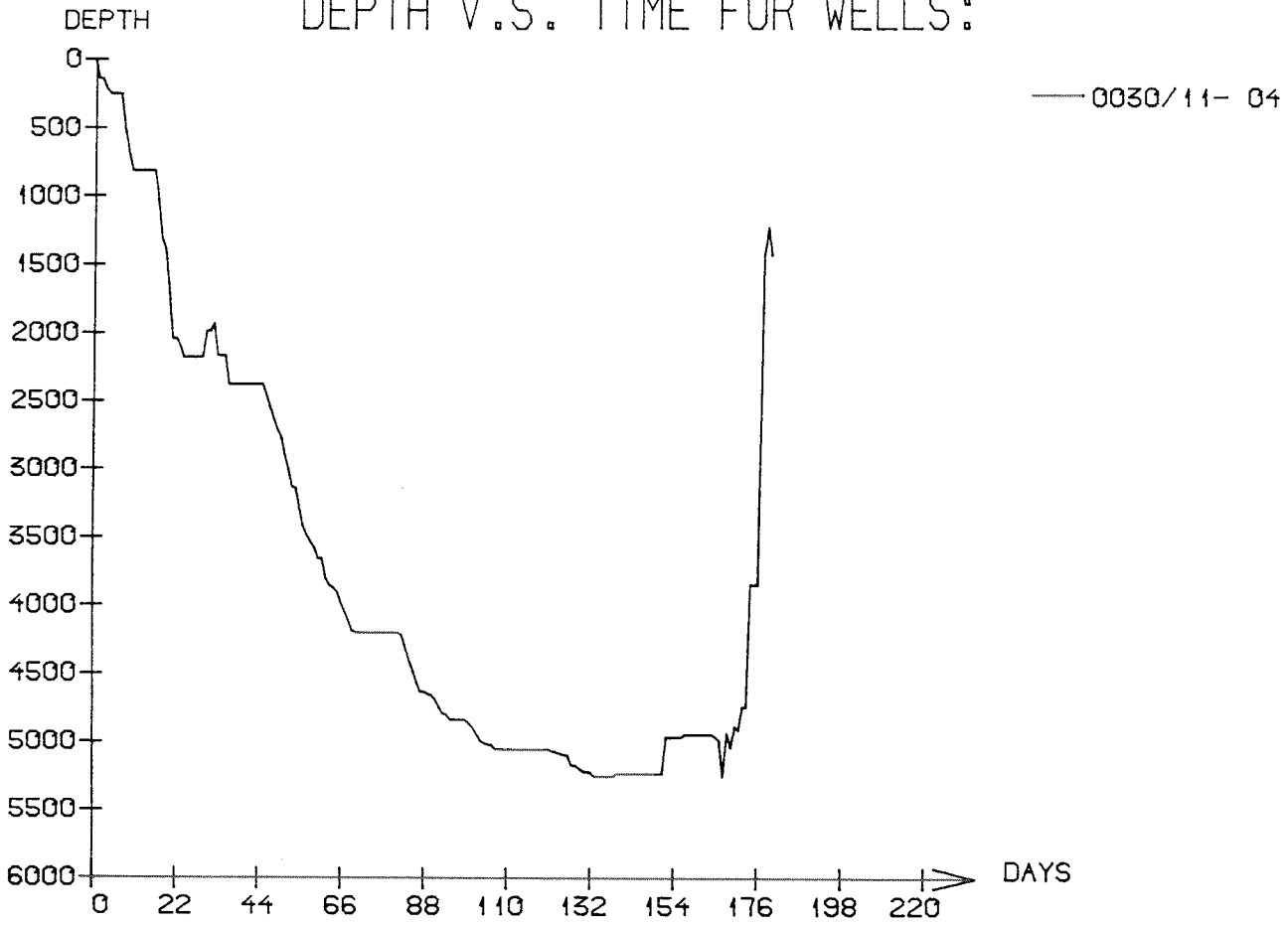
Main operation : 30/11-04



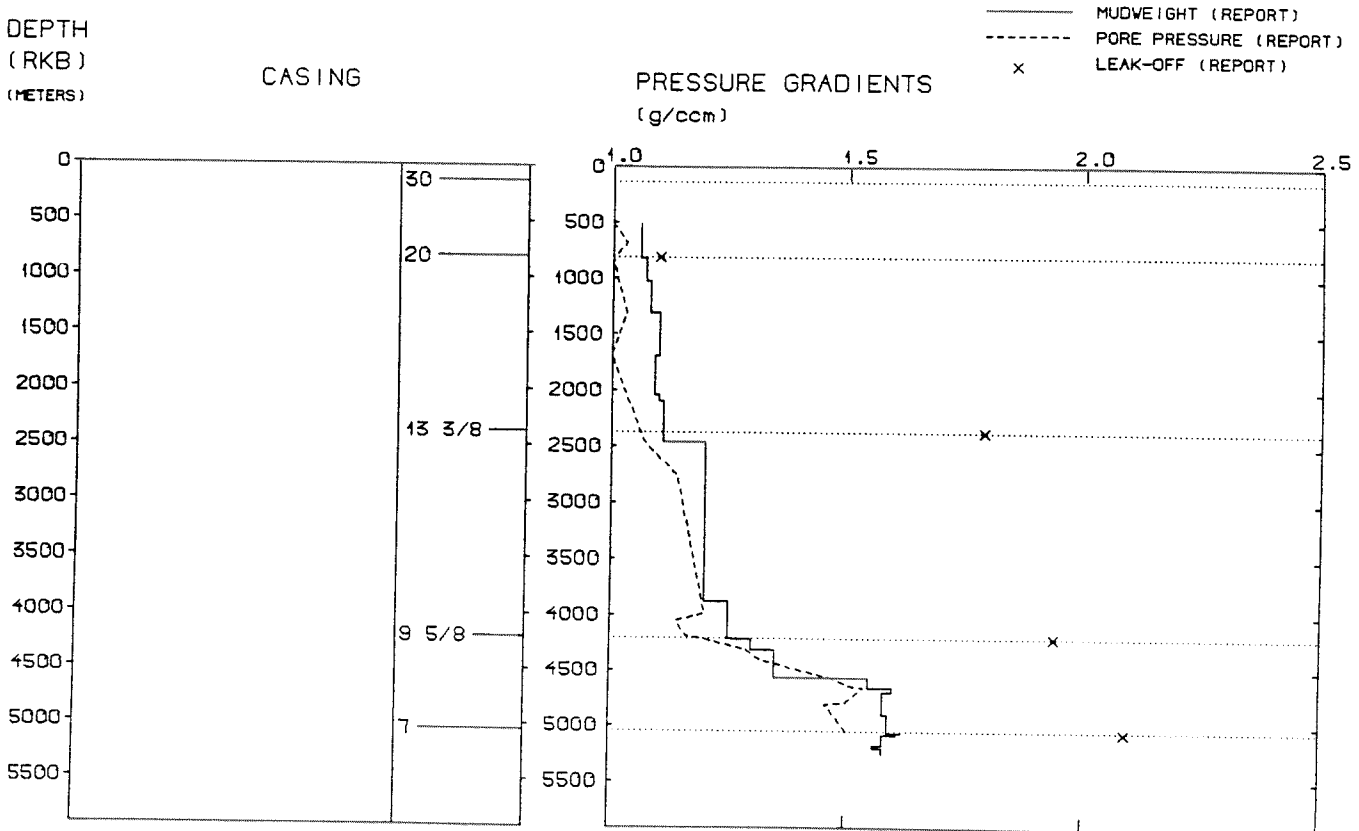
Total : 4526,00 HRS

Main operation	Hours	% of total
MOVING	161,00	3,56
DRILLING	2800,00	61,86
FORMATION	283,00	6,25
INTERRUPTION	261,50	5,78
COMPLETION	632,00	13,96
PLUG & ABANDON	388,50	8,58

DEPTH V.S. TIME FOR WELLS:



WELL: 003011 04 PRESSURE COMPOSITE PLOT



WELL HISTORY - 30/11-4

GENERAL:

The main objective of the wildcat 30/11-4 was to evaluate the hydrocarbon potential of the Lower Jurassic Statfjord Formation. The adjacent well 30/11-3 had failed to this due to technical problems.

OPERATIONS:

The well was spudded 25.01.84 by the semi-submersible rig Dyvi Delta. Five cores were cut, one in the Middle Jurassic sequence and four in Lower Jurassic. Some problems due to mudloss were experienced in the 26" hole section. Technical problems with the mud system on the rig were repaired while drilling the upper part of the 17 1/2" hole. Cavings and mudlosses occurred during drilling. At 2179 m a fish was lost, the drill string parted when working on the fish. A cement plug was set from 1988 - 1893 m. The hole was sidetracked from 1918 m. Several tight spots were encountered from 3500 m and problems with the mud system on the rig continued. The well was drilled using water based mud.

TESTING:

The well 30/11-4 was tested in two intervals. Flow was minimal in both.

GEOLOGICAL TOPS

WELL: 30/11-04

	Depth m (RKB)
<i>Nordland Group</i>	140.000
<i>Utsira Fm</i>	356.000
<i>Hordaland Group</i>	1080.000
<i>Frigg Fm</i>	1989.000
<i>Rogaland Group</i>	2160.000
<i>Balder Fm</i>	2160.000
<i>Heimdal Fm</i>	2199.000
<i>Lista Fm</i>	2345.500
<i>Våle Fm</i>	2597.000
<i>Shetland Group</i>	2611.500
<i>Jorsalfare Fm</i>	2611.500
<i>Kyrre Fm</i>	2870.500
<i>Tryggvason Fm</i>	3156.000
<i>Svarte Fm</i>	3193.000
<i>Cromer Knoll Group</i>	3224.500
<i>Viking Group</i>	3262.000
<i>Draupne Fm</i>	3262.000
<i>Heather Fm</i>	3283.000
<i>Vestland Group</i>	3434.000
<i>Hugin Fm</i>	3434.000
<i>Sleipner Fm</i>	3667.500
<i>Dunlin Group</i>	4010.000
<i>Drake Fm</i>	4010.000
<i>Cook Fm</i>	4210.000
<i>Burton Fm</i>	4273.000
<i>Amundsen Fm</i>	4319.000
 <i>Statfjord Fm</i>	4640.000
 TD =	5255.000