

WELL: 6506/12-1  
DATE: 06.08.84  
WELL: 6506/12-1  
DATE: 06.08.84

WATER DEPTH: 250 m  
DEEPEST FORM PEN: HALTEN GR - HITRA FM  
RIG RELEASE DATE: 06.02.85  
WELL STATUS: "PLUGGED AND ABANDONED"

CONTRACTOR: ROSS DRILLING A/S  
GEOLOGISTS: H. WILLE, P. OLAV, G. BEYER, J. TAJET, M. PRUDEN  
PREPARED BY: S. SINOW/GRACE DATE: JUNE 85

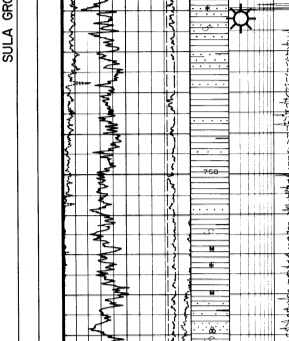
CASING DATA: 344.5 m/s  
LEAK OFF TESTS: VELOCITY SURVEY SCHLIMBERGER - WSS

Table with columns: LOGS RUN, CONTRACTOR, SCHLIMBERGER, LOGS RUN, CONTRACTOR, SCHLIMBERGER. Rows include: LOGS RUN, CONTRACTOR, SCHLIMBERGER, LOGS RUN, CONTRACTOR, SCHLIMBERGER.

COMMENTS:  
1. FINAL LOCATION WAS 24m 334" FROM PROPOSED LOCATION ON SEISMIC LINE 91460, SP 230  
2. SHALLOW GAS WAS ENCOUNTERED OVER THE FOLLOWING INTERVALS:  
622m 11%  
701m 12%  
717m 9%  
802m 10%

GAS SANDS BELOW A HARD CEMENTED LAYER AT 636m WERE OVERPRESSURED

LITHOLOGICAL SYMBOLS



DEPTH: 272 - 1-250 m  
TOP OF SANDSTONE UNIT

DEPTH: 272 - 1-250 m  
TOP OF SANDSTONE UNIT

DEPTH: 272 - 1-250 m  
TOP OF SANDSTONE UNIT

DEPTH: 272 - 1-250 m  
TOP OF SANDSTONE UNIT

DEPTH: 272 - 1-250 m  
TOP OF SANDSTONE UNIT

DEPTH: 272 - 1-250 m  
TOP OF SANDSTONE UNIT

DEPTH: 272 - 1-250 m  
TOP OF SANDSTONE UNIT

DEPTH: 272 - 1-250 m  
TOP OF SANDSTONE UNIT

DEPTH: 272 - 1-250 m  
TOP OF SANDSTONE UNIT

DEPTH: 272 - 1-250 m  
TOP OF SANDSTONE UNIT

DEPTH: 272 - 1-250 m  
TOP OF SANDSTONE UNIT

DEPTH: 272 - 1-250 m  
TOP OF SANDSTONE UNIT

DEPTH: 272 - 1-250 m  
TOP OF SANDSTONE UNIT

DEPTH: 272 - 1-250 m  
TOP OF SANDSTONE UNIT

DEPTH: 272 - 1-250 m  
TOP OF SANDSTONE UNIT

DEPTH: 272 - 1-250 m  
TOP OF SANDSTONE UNIT

DEPTH: 272 - 1-250 m  
TOP OF SANDSTONE UNIT

DEPTH: 272 - 1-250 m  
TOP OF SANDSTONE UNIT

DEPTH: 272 - 1-250 m  
TOP OF SANDSTONE UNIT

DEPTH: 272 - 1-250 m  
TOP OF SANDSTONE UNIT

DEPTH: 272 - 1-250 m  
TOP OF SANDSTONE UNIT

DEPTH: 272 - 1-250 m  
TOP OF SANDSTONE UNIT

DEPTH: 272 - 1-250 m  
TOP OF SANDSTONE UNIT

DEPTH: 272 - 1-250 m  
TOP OF SANDSTONE UNIT

DEPTH: 272 - 1-250 m  
TOP OF SANDSTONE UNIT

DEPTH: 272 - 1-250 m  
TOP OF SANDSTONE UNIT

DEPTH: 272 - 1-250 m  
TOP OF SANDSTONE UNIT

DEPTH: 272 - 1-250 m  
TOP OF SANDSTONE UNIT

DEPTH: 272 - 1-250 m  
TOP OF SANDSTONE UNIT

DEPTH: 272 - 1-250 m  
TOP OF SANDSTONE UNIT

DEPTH: 272 - 1-250 m  
TOP OF SANDSTONE UNIT

DEPTH: 272 - 1-250 m  
TOP OF SANDSTONE UNIT

DEPTH: 272 - 1-250 m  
TOP OF SANDSTONE UNIT

DEPTH: 272 - 1-250 m  
TOP OF SANDSTONE UNIT

DEPTH: 272 - 1-250 m  
TOP OF SANDSTONE UNIT

DEPTH: 272 - 1-250 m  
TOP OF SANDSTONE UNIT

DEPTH: 272 - 1-250 m  
TOP OF SANDSTONE UNIT

DEPTH: 272 - 1-250 m  
TOP OF SANDSTONE UNIT

DEPTH: 272 - 1-250 m  
TOP OF SANDSTONE UNIT

DEPTH: 272 - 1-250 m  
TOP OF SANDSTONE UNIT

DEPTH: 272 - 1-250 m  
TOP OF SANDSTONE UNIT

DEPTH: 272 - 1-250 m  
TOP OF SANDSTONE UNIT

DEPTH: 272 - 1-250 m  
TOP OF SANDSTONE UNIT

DEPTH: 272 - 1-250 m  
TOP OF SANDSTONE UNIT

DEPTH: 272 - 1-250 m  
TOP OF SANDSTONE UNIT

DEPTH: 272 - 1-250 m  
TOP OF SANDSTONE UNIT

DEPTH: 272 - 1-250 m  
TOP OF SANDSTONE UNIT

DEPTH: 272 - 1-250 m  
TOP OF SANDSTONE UNIT

DEPTH: 272 - 1-250 m  
TOP OF SANDSTONE UNIT

DEPTH: 272 - 1-250 m  
TOP OF SANDSTONE UNIT

DEPTH: 272 - 1-250 m  
TOP OF SANDSTONE UNIT

DEPTH: 272 - 1-250 m  
TOP OF SANDSTONE UNIT

DEPTH: 272 - 1-250 m  
TOP OF SANDSTONE UNIT

DEPTH: 272 - 1-250 m  
TOP OF SANDSTONE UNIT

DEPTH: 272 - 1-250 m  
TOP OF SANDSTONE UNIT

DEPTH: 272 - 1-250 m  
TOP OF SANDSTONE UNIT

DEPTH: 272 - 1-250 m  
TOP OF SANDSTONE UNIT