

Denne rapport  
tilhører

 **STATOIL**

**N**

**L&U DOK.SENTER**

L.NR. 12384210040

KODE Well 31/3-2 nr. 5

Returneres etter bruk

**sperry-sui**

Pressure Survey Report

for

Norsk Hydro A/S

Well No. 31/3-2

15 April 1984

Wellhead Data



SHS1

P5.15-01

B1/3-2

Pressure Survey Report

for

Norsk Hydro A/S

Well No. 31/3-2

15 April 1984

Wellhead Data

SPERRY-SUN INTERNATIONAL INC.  
MR-SIX PRESSURE GAUGE REPORT

NORSK HYDRO A/S  
TROLL  
31/3-2

OFFSHORE NORWAY  
20 APRIL 1984  
NR-XS-40061

CHECK PRESSURES FOR

---

GAUGE NO: 288 8

ELEMENT SIZE: 5K 5K

POSITION: UPSTREAM DOWNSTREAM

---

END OF EVENT	TIME/DATE	PRESSURE (bar)	PRESSURE (bar)
POST PERFORATION FLOW	10:38/15.04.84	71.549	
BUILD-UP PERIOD	11:28/ "	76.514	
PRE GRAVELPACK FLOW	23:05/ "	116.436	
BUILD-UP PERIOD	01:55/16.04.84	115.402	
PRE ACIDIZING FLOW	04:45/20.04.84	100.853	
ACIDIZING PERIOD	07:20/ "	96.854	
POST ACIDIZING FLOW	10:34/ "	95.513	
POST GRAVELPACK TEST:			
FIRST FLOW	06:45/20.04.84	107.748	21.973
FIRST BUILD-UP	10:45/21.04.84	101.750	
SECOND FLOW	08:05/ "	115.315	24.719
SECOND BUILD-UP	11:45/23.04.84	116.229	

---

SPERRY-SUN ENGINEER:R.J.Bjornestad.

SPERRY-SUN INTERNATIONAL INC.  
MR-SIX PRESSURE GAUGE REPORT

NORSK HYDRO A/S  
TROLL  
31/3-2

OFFSHORE NORWAY  
20 APRIL 1984  
NR-XS-40061

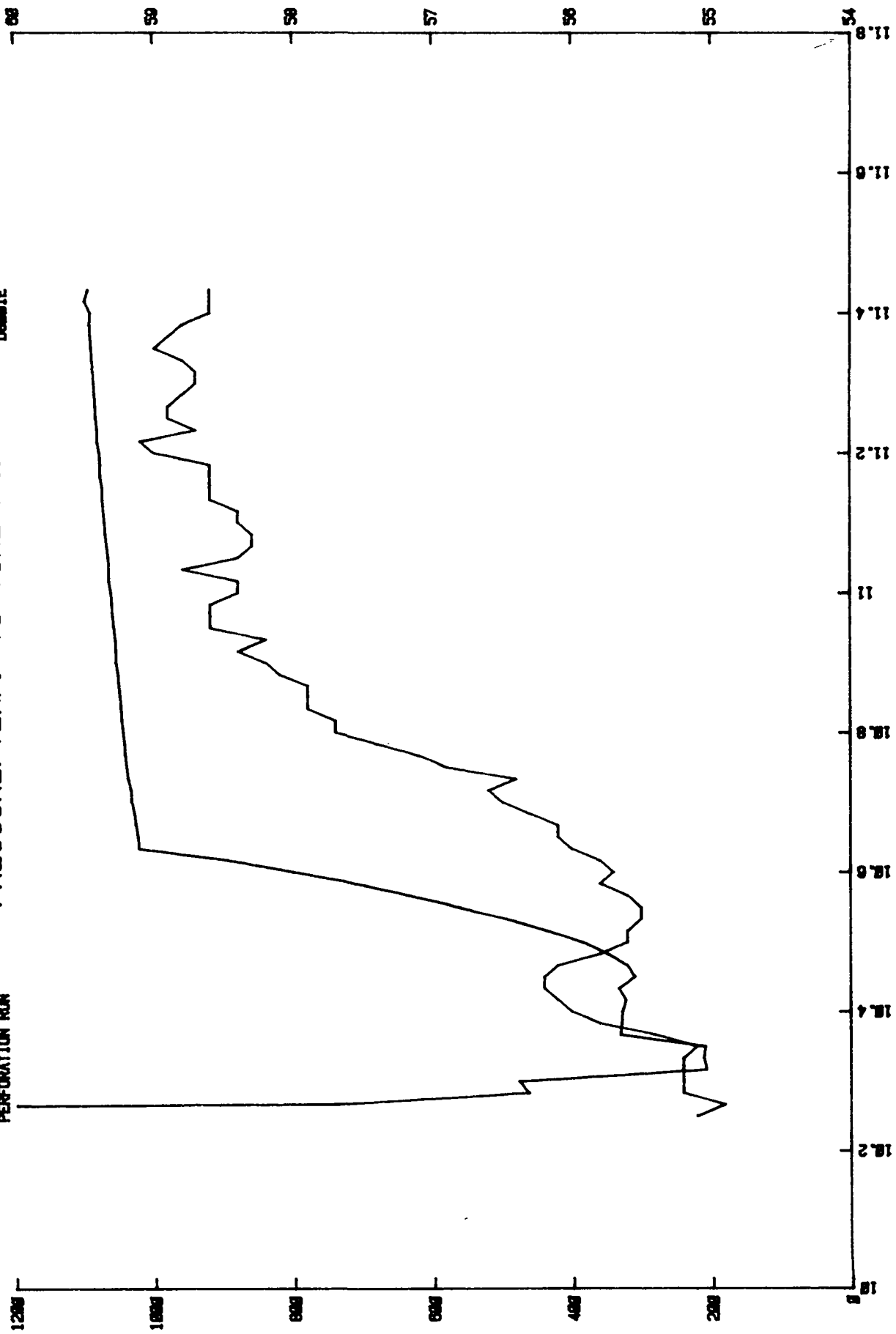
SEQUENCE OF EVENTS.

DATE	TIME	OPERATION
15/04/84	10:21	GUNS FIRE. OPEN WELL TO FLOW ON 12/64" ADJ. CHOKE.
"	10:26	INCREASE TO 16/64" ADJ. CHOKE.
"	10:38	WELL SHUT-IN.
"	11:28	SHUT LUBRICATOR-VALVE. (R.I.H. WITH GAUGES).
"	16:06	WELL OPENED TO FLOW ON 8/64" ADJ. CHOKE.
"	16:20	GAS TO SURFACE.
"	16:36	INCREASE TO 12/64" ADJ. CHOKE.
"	17:12	INCREASE TO 16/64" ADJ. CHOKE.
"	17:27	INCREASE TO 24/64" ADJ. CHOKE.
"	17:37	DECREASE TO 16/64" ADJ. CHOKE.
"	17:56	CHANGE TO 16/64" FIXED CHOKE.
"	18:55	FORMATION FLUID TO SURFACE.
"	19:38	INCREASE TO 24/64" FIXED CHOKE.
"	23:05	WELL SHUT-IN AT PCT VALVE AND CHOKE MANIFOLD.
16/04/84	01:55	SHUT LUBRICATOR VALVE. COMMENCE GRAVELPACK. (NO WELLHEAD DATA TAKEN).
20/04/84	02:57	WELL OPENED TO FLOW ON 24/64" ADJ. CHOKE.
"	03:43	GAS TO SURFACE.
"	04:03	OIL TO SURFACE.
"	04:35	INCREASE TO 32/64" ADJ. CHOKE.
"	04:38	INCREASE TO 48/64" ADJ. CHOKE.
"	04:42	INCREASE TO 64/64" ADJ. FLOW.
"	04:45	WELL SHUT-IN AT CHOKE.
"	05:15	COMMENCE PUMPING ACID.
"	07:20	COMPLETE PUMPING ACID.
"	07:35	OBSERVE WELL.
"	08:48	WELL OPENED TO FLOW ON 24/64" ADJ. CHOKE.
"	09:30	GAS TO SURFACE.
"	09:43	INCREASE TO 32/64" ADJ. CHOKE.
"	10:34	WELL SHUT-IN AT CHOKE.
"	10:36	SHUT LUBRICATOR VALVE. (R.I.H. WITH GAUGES).
20/04/84	15:35	WELL OPENED TO FLOW ON 24/64" ADJ. CHOKE.
21/04/84	06:45	WELL SHUT-IN AT PCT VALVE.
"	10:45	WELL OPENED TO FLOW ON 24/64" ADJ. CHOKE.
"	17:15	INCREASE TO 36/64" ADJ. CHOKE.
"	17:20	CHANGE TO 36/64" FIXED CHOKE
"	21:15	INCREASE TO 44/64" FIXED CHOKE.
22/04/84	01:09	INCREASE TO 56/64" FIXED CHOKE.
"	05:21	INCREASE TO 64/64" ADJ. CHOKE.
"	05:28	CHANGE TO 64/64" FIXED CHOKE.
"	08:35	BYPASSING CHOKE MANIFOLD.
"	21.45	DECREASE TO 56/64" FIXED CHOKE.
"	23:10	WELL SHUT-IN AT SURFACE TREE.
"	23:25	WELL OPENED TO FLOW ON 56/64" FIXED CHOKE.
23/04/84	03:35	DECREASE TO 26/64" ADJ. CHOKE.
"	08:00	WELL SHUT-IN AT PCT VALVE AND CHOKE MANIFOLD.

NL Sperry-Sun, Inc.  
 PRESSURE/TEMP. Vs TIME PLOT

NORSK HYDRO A/S.  
 31/3-2  
 TROLL  
 PERFORATION RUN

15 APRIL 1984  
 NR-XR-48881  
 NR-8 PROBE NO. 8  
 DEWITTE



PRESSURE Scale 1 inch = 200 PSIG

TEMPERATURE Scale 1 inch = 1 (deg. F)

REAL TIME Scale 1 inch = 0.2 hour

5/ 9/84

SPERRY-SUN INTERNATIONAL  
MR-SIX PRESSURE GAUGE REPORT

PAGE: 1

NORSK HYDRO A/S  
TROLL  
31/3-2

OFFSHORE NORWAY  
15 APRIL 1984  
NR-XS-40061

D.S.T.1. PERFORATION. MR-6 PROBE NO.8. PREPERFORATION PERIOD.

DELTA TIME HOURS	ABS PRESSURE (BARS)	TEMP. DEG C	TIME	
0.000	344.979	12.8	10:15: 0	15/ 4/84 FIRING GUNS ACTIVATED.
0.004	343.807	12.8	10:15:15	
0.008	245.902	12.7	10:15:30	COMMENCE BLEEDING
0.012	140.274	12.7	10:15:45	OF PRESSURE.
0.017	52.159	12.7	10:16: 0	
0.021	21.960	12.8	10:16:15	
0.025	23.960	12.9	10:16:30	
0.029	30.372	12.9	10:16:45	
0.033	32.923	12.9	10:17: 0	
0.038	34.095	12.8	10:17:15	
0.042	34.233	12.9	10:17:30	
0.046	34.095	12.9	10:17:45	
0.050	33.888	12.9	10:18: 0	
0.054	33.957	12.9	10:18:15	
0.058	33.681	12.8	10:18:30	
0.062	24.856	12.9	10:18:45	
0.067	15.272	12.9	10:19: 0	COMPLETE BLEEDING
0.071	15.548	12.9	10:19:15	OF PRESSURE.
0.075	15.410	12.8	10:19:30	
0.079	15.548	12.8	10:19:45	
0.083	15.548	12.9	10:20: 0	
0.087	15.479	12.9	10:20:15	
0.092	15.617	12.7	10:20:30	
0.096	15.410	12.8	10:20:45	GUNS FIRED. WELL OPENED
0.100	15.410	12.8	10:21: 0	ON 12/64" ADJ CHOKE.

5/ 9/84

SPERRY-SUN INTERNATIONAL  
MR-SIX PRESSURE GAUGE REPORT

PAGE: 1

NORSK HYDRO A/S  
TROLL  
31/3-2

OFFSHORE NORWAY  
15 APRIL 1984  
NR-XS-40061

D.S.T.1.PERFORATION. MR-6 PROBE NO. 8. FLOW PERIOD.

DELTA TIME HOURS	ABS PRESSURE (BARS)	TEMP. DEG C	TIME	
0.000	15.410	12.8	10:21: 0	15/ 4/84 GUNS FIRE. OPEN WELL
0.004	22.994	12.8	10:21:15	ON 12/64" ADJ. CHOKE.
0.008	24.580	12.8	10:21:30	
0.012	23.270	12.9	10:21:45	
0.017	23.822	13.0	10:22: 0	
0.021	23.684	13.2	10:22:15	
0.025	23.753	13.3	10:22:30	
0.029	23.753	13.2	10:22:45	
0.033	23.684	13.2	10:23: 0	
0.038	23.753	13.2	10:23:15	
0.042	23.684	13.2	10:23:30	
0.046	23.684	13.3	10:23:45	
0.050	23.615	13.3	10:24: 0	
0.054	23.822	13.2	10:24:15	
0.058	23.684	13.3	10:24:30	
0.062	23.339	13.4	10:24:45	
0.067	23.270	13.4	10:25: 0	
0.071	23.339	13.3	10:25:15	
0.075	23.615	13.4	10:25:30	
0.079	23.891	13.6	10:25:45	
0.083	23.960	13.4	10:26: 0	
0.087	24.304	13.5	10:26:15	
0.092	24.442	13.5	10:26:30	
0.096	23.063	13.5	10:26:45	
0.100	22.374	13.4	10:27: 0	
0.104	22.512	13.4	10:27:15	
0.108	22.787	13.4	10:27:30	
0.113	22.925	13.3	10:27:45	
0.117	23.132	13.4	10:28: 0	
0.121	23.408	13.3	10:28:15	
0.125	23.891	13.2	10:28:30	
0.129	24.511	13.3	10:28:45	
0.133	25.063	13.2	10:29: 0	
0.137	25.476	13.2	10:29:15	
0.142	26.097	13.2	10:29:30	
0.146	26.786	13.1	10:29:45	
0.150	27.545	13.1	10:30: 0	
0.154	28.372	13.2	10:30:15	
0.158	29.200	13.1	10:30:30	
0.163	30.165	13.2	10:30:45	
0.167	31.061	13.1	10:31: 0	
0.171	31.957	13.1	10:31:15	
0.175	33.061	13.1	10:31:30	
0.179	34.095	13.0	10:31:45	
0.183	35.129	13.1	10:32: 0	
0.187	36.163	13.1	10:32:15	
0.192	37.197	13.1	10:32:30	
0.196	38.439	13.1	10:32:45	
0.200	39.680	13.1	10:33: 0	
0.204	40.852	13.1	10:33:15	

INCREASE TO 16/64"  
ADJ. CHOKE.

5/ 9/84

SPERRY-SUN INTERNATIONAL  
MR-SIX PRESSURE GAUGE REPORT

PAGE: 2

NORSK HYDRO A/S  
TROLL  
31/3-2

OFFSHORE NORWAY  
15 APRIL 1984  
NR-XS-40061

D.S.T.1.PERFORATION. MR-6 PROBE NO. 8. FLOW PERIOD.

DELTA TIME HOURS	ABS PRESSURE (BARS)	TEMP. DEG C	TIME	
0.208	42.300	13.1	10:33:30	15/ 4/84
0.212	43.403	13.1	10:33:45	
0.217	44.782	13.1	10:34: 0	
0.221	46.161	13.1	10:34:15	
0.225	47.402	13.2	10:34:30	
0.229	48.988	13.2	10:34:45	
0.233	50.091	13.2	10:35: 0	
0.238	51.745	13.1	10:35:15	
0.242	53.262	13.1	10:35:30	
0.246	54.710	13.2	10:35:45	
0.250	56.296	13.2	10:36: 0	
0.254	57.813	13.2	10:36:15	
0.258	59.536	13.2	10:36:30	
0.262	61.053	13.2	10:36:45	
0.267	62.777	13.2	10:37: 0	
0.271	64.363	13.2	10:37:15	
0.275	70.499	13.2	10:37:30	
0.283	71.533	13.3	10:38: 0	

END OF FLOW PERIOD.



5/ 9/84

SPERRY-SUN INTERNATIONAL  
MR-SIX PRESSURE GAUGE REPORT

PAGE: 1

NORSK HYDRO A/S  
TROLL  
31/3-2

OFFSHORE NORWAY  
15 APRIL 1984  
NR-XS-40061

D.S.T.1.PERFORATION. MR-6 PROBE NO. 8. BUILD-UP PERIOD.

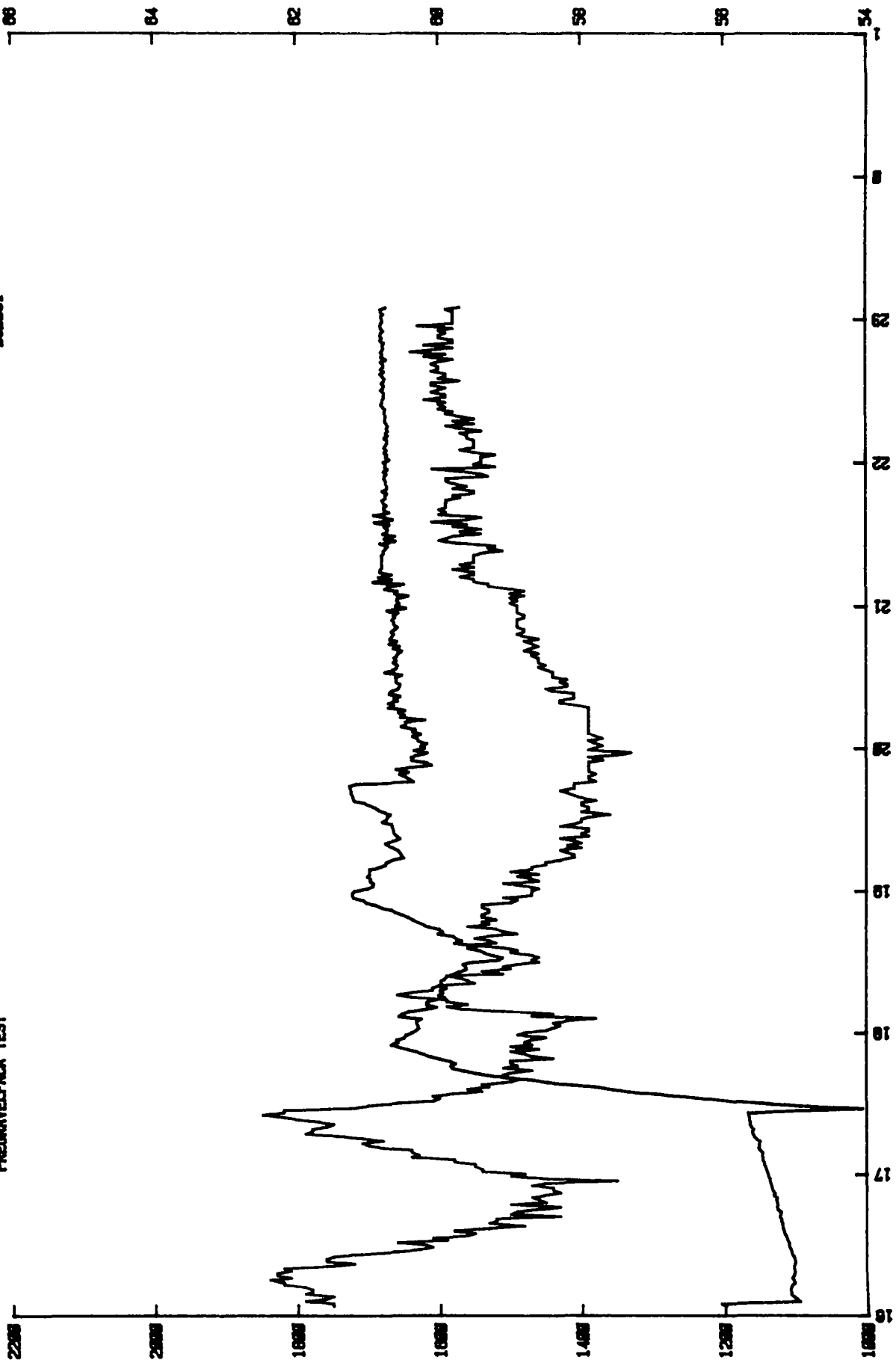
DELTA TIME HOURS	ABS PRESSURE (BARS)	TEMP. DEG C	TIME	
0.000	71.533	13.3	10:38: 0	15/ 4/84 WELL SHUT IN AT TESTER
0.017	71.602	13.3	10:39: 0	VALVE AND CHOKE MANIFOLD
0.033	71.671	13.4	10:40: 0	
0.050	71.878	13.4	10:41: 0	
0.067	72.016	13.5	10:42: 0	
0.083	72.292	13.6	10:43: 0	
0.100	72.361	13.7	10:44: 0	
0.117	72.637	13.6	10:45: 0	
0.133	72.774	13.8	10:46: 0	
0.150	72.912	13.9	10:47: 0	
0.167	72.981	14.1	10:48: 0	
0.183	73.119	14.3	10:49: 0	
0.200	73.257	14.3	10:50: 0	
0.217	73.326	14.4	10:51: 0	
0.233	73.395	14.4	10:52: 0	
0.250	73.533	14.4	10:53: 0	
0.267	73.602	14.5	10:54: 0	
0.283	73.809	14.6	10:55: 0	
0.300	73.809	14.7	10:56: 0	
0.317	73.878	14.6	10:57: 0	
0.333	74.015	14.8	10:58: 0	
0.350	74.153	14.8	10:59: 0	
0.367	74.222	14.8	11: 0: 0	
0.383	74.291	14.7	11: 1: 0	
0.400	74.498	14.7	11: 2: 0	
0.417	74.498	14.9	11: 3: 0	
0.433	74.567	14.7	11: 4: 0	
0.450	74.705	14.6	11: 5: 0	
0.467	74.843	14.6	11: 6: 0	
0.483	74.912	14.7	11: 7: 0	
0.500	75.050	14.7	11: 8: 0	
0.517	75.119	14.8	11: 9: 0	
0.533	75.119	14.8	11:10: 0	
0.550	75.325	14.8	11:11: 0	
0.567	75.325	14.8	11:12: 0	
0.583	75.394	15.0	11:13: 0	
0.600	75.601	15.1	11:14: 0	
0.617	75.601	14.8	11:15: 0	
0.633	75.739	14.9	11:16: 0	
0.650	75.808	14.9	11:17: 0	
0.667	75.877	14.9	11:18: 0	
0.683	75.946	14.8	11:19: 0	
0.700	76.015	14.8	11:20: 0	
0.717	76.153	14.9	11:21: 0	
0.733	76.222	15.0	11:22: 0	
0.750	76.291	14.9	11:23: 0	
0.767	76.360	14.9	11:24: 0	
0.783	76.291	14.8	11:25: 0	
0.800	76.842	14.8	11:26: 0	
0.817	76.498	14.8	11:27: 0	

END OF TEST.

NORSK HYDRO A/S  
31/3-2  
TROLL  
PREGRAVELPACK TEST

# NL Sperry-Sun, Inc. PRESSURE/TEMP. VS TIME PLOT

15 APRIL 1984  
WELLHEAD DATA  
MR-8 PROBE NO. 8  
D88851



PRESSURE  
Scale: 1 inch = 2000 PSIG

TEMPERATURE  
Scale: 1 inch = 2 (deg. F)

REAL TIME  
Scale: 1 inch = 1 hour

5/ 9/84

SPERRY-SUN INTERNATIONAL  
MR-SIX PRESSURE GAUGE REPORT

PAGE: 1

NORSK HYDRO A/S  
TROLL  
31/3-2

OFFSHORE NORWAY  
15 APRIL 1984  
NR-XS-40061

D.S.T.2. PRE GRAVELPACK TEST. MR-6 PROBE NO. 8. FLOW PERIOD.

DELTA TIME HOURS	ABS PRESSURE (BARS)	TEMP. DEG C	TIME	
0.000	76.498	16.6	16: 6: 0	15/ 4/84 WELL OPENED TO FLOW ON 8/64" ADJ. CHOKE.
0.017	76.773	16.4	16: 7: 0	
0.033	77.049	16.4	16: 8: 0	
0.050	77.325	16.6	16: 9: 0	
0.067	77.325	16.6	16:10: 0	
0.083	77.394	16.6	16:11: 0	
0.100	77.325	16.6	16:12: 0	
0.117	77.187	16.8	16:13: 0	
0.133	76.980	16.8	16:14: 0	
0.150	77.049	16.9	16:15: 0	
0.167	77.187	16.7	16:16: 0	
0.183	77.049	16.8	16:17: 0	
0.200	76.980	16.8	16:18: 0	
0.217	76.911	16.7	16:19: 0	
0.233	76.980	16.8	16:20: 0	GAS TO SURFACE.
0.250	76.980	16.4	16:21: 0	
0.267	76.911	16.2	16:22: 0	
0.283	76.842	16.4	16:23: 0	
0.300	76.911	16.4	16:24: 0	
0.317	76.980	16.4	16:25: 0	
0.333	77.118	16.2	16:26: 0	
0.350	77.187	15.9	16:27: 0	
0.367	77.256	15.7	16:28: 0	
0.383	77.394	15.6	16:29: 0	
0.400	77.463	15.7	16:30: 0	
0.417	77.463	15.9	16:31: 0	
0.433	77.601	15.5	16:32: 0	
0.450	77.670	15.6	16:33: 0	
0.467	77.739	15.3	16:34: 0	
0.483	77.877	15.3	16:35: 0	
0.500	77.945	15.4	16:36: 0	
0.517	78.014	15.2	16:37: 0	
0.533	78.083	14.9	16:38: 0	
0.550	78.083	15.2	16:39: 0	
0.567	78.221	15.1	16:40: 0	
0.583	78.221	15.1	16:41: 0	
0.600	78.359	14.6	16:42: 0	
0.617	78.290	15.0	16:43: 0	
0.633	78.221	14.9	16:44: 0	
0.650	78.566	14.8	16:45: 0	
0.667	78.635	14.6	16:46: 0	
0.683	78.566	15.0	16:47: 0	
0.700	78.635	14.7	16:48: 0	
0.717	78.704	14.8	16:49: 0	
0.733	78.635	14.8	16:50: 0	
0.750	78.911	14.7	16:51: 0	
0.767	78.842	14.6	16:52: 0	
0.783	79.049	14.7	16:53: 0	
0.800	79.118	14.7	16:54: 0	
0.817	79.187	14.8	16:55: 0	

INCREASE TO 12/64"  
ADJ.CHOKE.

5/ 9/84

SPERRY-SUN INTERNATIONAL  
MR-SIX PRESSURE GAUGE REPORT

PAGE: 2

NORSK HYDRO A/S  
TROLL  
31/3-2

OFFSHORE NORWAY  
15 APRIL 1984  
NR-XS-40061

D.S.T.2. PRE GRAVELPACK TEST. MR-6 PROBE NO. 8. FLOW PERIOD.

DELTA TIME HOURS	ABS PRESSURE (BARS)	TEMP. DEG C	TIME	
0.833	79.255	14.7	16:56: 0	15/ 4/84
0.850	79.324	14.2	16:57: 0	
0.867	79.324	14.7	16:58: 0	
0.883	79.462	15.0	16:59: 0	
0.900	79.531	14.9	17: 0: 0	
0.917	79.600	15.2	17: 1: 0	
0.933	79.669	15.2	17: 2: 0	
0.950	79.738	15.3	17: 3: 0	
0.967	79.876	15.3	17: 4: 0	
0.983	79.876	15.4	17: 5: 0	
1.000	80.014	15.4	17: 6: 0	
1.017	80.014	15.8	17: 7: 0	
1.033	80.083	15.7	17: 8: 0	
1.050	80.014	15.8	17: 9: 0	
1.067	80.221	15.8	17:10: 0	
1.083	80.428	16.0	17:11: 0	
1.100	80.359	16.1	17:12: 0	
1.117	80.359	16.2	17:13: 0	
1.133	80.290	16.0	17:14: 0	
1.150	80.634	16.2	17:15: 0	
1.167	80.841	16.3	17:16: 0	
1.183	80.979	16.6	17:17: 0	
1.200	81.048	16.6	17:18: 0	
1.217	80.910	16.6	17:19: 0	
1.233	81.117	16.4	17:20: 0	
1.250	81.255	16.4	17:21: 0	
1.267	81.255	16.5	17:22: 0	
1.283	81.324	16.7	17:23: 0	
1.300	81.324	16.8	17:24: 0	
1.317	81.393	16.9	17:25: 0	
1.333	81.462	16.8	17:26: 0	
1.350	76.498	16.8	17:27: 0	
1.367	70.292	16.2	17:28: 0	
1.383	76.291	16.1	17:29: 0	
1.400	79.531	15.9	17:30: 0	
1.417	82.772	15.6	17:31: 0	
1.433	85.323	15.6	17:32: 0	
1.450	87.667	15.6	17:33: 0	
1.467	90.287	15.4	17:34: 0	
1.483	92.976	15.2	17:35: 0	
1.500	94.562	15.3	17:36: 0	
1.517	95.872	15.2	17:37: 0	
1.533	98.492	15.2	17:38: 0	
1.550	100.767	15.0	17:39: 0	
1.567	102.146	14.9	17:40: 0	
1.583	104.283	15.1	17:41: 0	
1.600	106.421	15.1	17:42: 0	
1.617	107.800	15.0	17:43: 0	
1.633	109.041	14.8	17:44: 0	
1.650	110.144	15.1	17:45: 0	

INCREASE TO 16/64"  
ADJ. CHOKE.

INCREASE TO 24/64"  
ADJ. CHOKE.

DECREASE TO 16/64"  
ADJ. CHOKE.

5/ 9/84

SPERRY-SUN INTERNATIONAL  
MR-SIX PRESSURE GAUGE REPORT

PAGE: 3

NORSK HYDRO A/S  
TROLL  
31/3-2

OFFSHORE NORWAY  
15 APRIL 1984  
NR-XS-40061

D.S.T.2. PRE GRAVELPACK TEST. MR-6 PROBE NO. 8. FLOW PERIOD.

DELTA TIME HOURS	ABS PRESSURE (BARS)	TEMP. DEG C	TIME	
1.667	110.282	14.9	17:46: 0	15/ 4/84
1.683	109.799	15.0	17:47: 0	
1.700	110.351	15.0	17:48: 0	
1.717	111.385	14.7	17:49: 0	
1.733	112.281	14.8	17:50: 0	
1.750	112.902	14.9	17:51: 0	
1.767	113.591	15.0	17:52: 0	
1.783	114.488	14.8	17:53: 0	
1.800	115.384	15.0	17:54: 0	
1.817	116.073	14.8	17:55: 0	
1.833	115.384	14.9	17:56: 0	
1.850	115.522	14.8	17:57: 0	
1.867	114.763	14.7	17:58: 0	
1.883	114.626	14.9	17:59: 0	
1.900	114.074	14.9	18: 0: 0	
1.917	113.660	14.7	18: 1: 0	
1.933	113.385	14.7	18: 2: 0	
1.950	113.453	14.6	18: 3: 0	
1.967	113.591	14.7	18: 4: 0	
1.983	113.591	14.6	18: 5: 0	
2.000	113.109	14.3	18: 6: 0	
2.017	115.315	14.8	18: 7: 0	
2.033	114.970	14.7	18: 8: 0	
2.050	114.350	15.1	18: 9: 0	
2.067	112.902	15.4	18:10: 0	
2.083	111.661	15.5	18:11: 0	
2.100	112.626	15.3	18:12: 0	
2.117	112.626	15.5	18:13: 0	
2.133	112.075	15.5	18:14: 0	
2.150	110.833	15.8	18:15: 0	
2.167	111.454	15.9	18:16: 0	
2.183	111.040	15.8	18:17: 0	
2.200	111.316	15.6	18:18: 0	
2.217	110.696	15.6	18:19: 0	
2.233	111.454	15.6	18:20: 0	
2.250	111.178	15.3	18:21: 0	
2.267	111.247	15.3	18:22: 0	
2.283	110.833	15.4	18:23: 0	
2.300	110.627	15.5	18:24: 0	
2.317	109.937	15.1	18:25: 0	
2.333	109.455	15.2	18:26: 0	
2.350	108.696	15.0	18:27: 0	
2.367	108.765	15.1	18:28: 0	
2.383	109.110	14.9	18:29: 0	
2.400	108.282	14.8	18:30: 0	
2.417	105.593	14.8	18:31: 0	
2.433	105.180	14.8	18:32: 0	
2.450	106.145	14.8	18:33: 0	
2.467	106.972	15.0	18:34: 0	
2.483	107.386	14.9	18:35: 0	

CHANGE TO 16/64  
FIXED CHOKE.

NORSK HYDRD A/S  
TROLL  
31/3-2OFFSHORE NORWAY  
15 APRIL 1984  
NR-XS-40061

D.S.T.2. PRE GRAVELPACK TEST. MR-6 PROBE NO. 8. FLOW PERIOD.

DELTA TIME HOURS	ABS PRESSURE (BARS)	TEMP. DEG C	TIME	
2.500	108.558	15.1	18:36: 0	15/ 4/84
2.517	107.593	15.3	18:37: 0	
2.533	109.937	15.1	18:38: 0	
2.550	109.179	15.2	18:39: 0	
2.567	109.730	15.3	18:40: 0	
2.583	110.006	15.2	18:41: 0	
2.600	111.523	14.9	18:42: 0	
2.617	111.040	15.1	18:43: 0	
2.633	111.316	15.1	18:44: 0	
2.650	112.419	15.3	18:45: 0	
2.667	112.902	15.2	18:46: 0	
2.683	113.453	15.2	18:47: 0	
2.700	113.936	15.1	18:48: 0	
2.717	114.419	15.2	18:49: 0	
2.733	114.901	15.2	18:50: 0	
2.750	115.660	15.2	18:51: 0	
2.767	116.005	15.2	18:52: 0	
2.783	116.970	15.2	18:53: 0	
2.800	117.521	15.2	18:54: 0	
2.817	118.418	15.0	18:55: 0	
2.833	118.762	14.9	18:56: 0	
2.850	119.728	15.1	18:57: 0	
2.867	119.797	14.8	18:58: 0	
2.883	119.797	14.8	18:59: 0	
2.900	119.590	14.8	19: 0: 0	
2.917	118.349	14.8	19: 1: 0	
2.933	117.797	14.9	19: 2: 0	
2.950	117.728	15.1	19: 3: 0	
2.967	118.073	14.8	19: 4: 0	
2.983	118.004	14.8	19: 5: 0	
3.000	118.349	14.9	19: 6: 0	
3.017	118.142	14.8	19: 7: 0	
3.033	118.142	15.0	19: 8: 0	
3.050	118.142	14.8	19: 9: 0	
3.067	117.246	14.8	19:10: 0	
3.083	116.556	14.7	19:11: 0	
3.100	116.556	14.7	19:12: 0	
3.117	116.005	14.6	19:13: 0	
3.133	114.832	14.5	19:14: 0	
3.150	115.039	14.5	19:15: 0	
3.167	115.177	14.6	19:16: 0	
3.183	115.384	14.6	19:17: 0	
3.200	115.867	14.4	19:18: 0	
3.217	116.280	14.6	19:19: 0	
3.233	116.625	14.4	19:20: 0	
3.250	115.867	14.5	19:21: 0	
3.267	115.177	14.6	19:22: 0	
3.283	115.453	14.4	19:23: 0	
3.300	115.729	14.4	19:24: 0	
3.317	115.798	14.4	19:25: 0	

FORMATION FLUID  
TO SURFACE.

5/ 9/84

SPERRY-SUN INTERNATIONAL  
MR-SIX PRESSURE GAUGE REPORT

PAGE: 5

NORSK HYDRO A/S  
TROLL  
31/3-2

OFFSHORE NORWAY  
15 APRIL 1984  
NR-XS-40061

D.S.T.2. PRE GRAVELPACK TEST. MR-6 PROBE NO. 8. FLOW PERIOD.

DELTA TIME HOURS	ABS PRESSURE (BARS)	TEMP. DEG C	TIME
3.333	115.867	14.4	19:26: 0
3.350	115.936	14.6	19:27: 0
3.367	116.005	14.5	19:28: 0
3.383	116.901	14.4	19:29: 0
3.400	116.487	14.4	19:30: 0
3.417	116.418	14.4	19:31: 0
3.433	116.142	14.2	19:32: 0
3.450	116.694	14.4	19:33: 0
3.467	117.315	14.4	19:34: 0
3.483	117.590	14.4	19:35: 0
3.500	118.142	14.4	19:36: 0
3.517	118.693	14.4	19:37: 0
3.533	119.659	14.3	19:38: 0
3.550	119.728	14.4	19:39: 0
3.567	119.797	14.5	19:40: 0
3.583	119.935	14.6	19:41: 0
3.600	119.935	14.6	19:42: 0
3.617	120.003	14.5	19:43: 0
3.633	120.072	14.5	19:44: 0
3.650	119.383	14.5	19:45: 0
3.667	113.867	14.3	19:46: 0
3.683	114.281	14.4	19:47: 0
3.700	114.626	14.4	19:48: 0
3.717	115.246	14.3	19:49: 0
3.733	114.350	14.4	19:50: 0
3.750	115.591	14.4	19:51: 0
3.767	114.281	14.4	19:52: 0
3.783	112.143	14.4	19:53: 0
3.800	112.626	14.4	19:54: 0
3.817	114.074	14.3	19:55: 0
3.833	114.074	14.4	19:56: 0
3.850	113.591	14.2	19:57: 0
3.867	112.488	14.1	19:58: 0
3.883	113.798	14.4	19:59: 0
3.900	112.764	14.3	20: 0: 0
3.917	113.109	14.3	20: 1: 0
3.933	112.488	14.3	20: 2: 0
3.950	113.385	14.4	20: 3: 0
3.967	113.453	14.3	20: 4: 0
3.983	113.936	14.3	20: 5: 0
4.000	113.109	14.4	20: 6: 0
4.017	113.936	14.4	20: 7: 0
4.033	113.660	14.4	20: 8: 0
4.050	115.039	14.4	20: 9: 0
4.067	114.557	14.4	20:10: 0
4.083	114.626	14.4	20:11: 0
4.100	112.695	14.4	20:12: 0
4.117	115.108	14.4	20:13: 0
4.133	114.695	14.4	20:14: 0
4.150	115.315	14.4	20:15: 0

INCREASE TO 24/64"  
FIXED CHOKE.

5/ 9/84

SPERRY-SUN INTERNATIONAL  
MR-SIX PRESSURE GAUGE REPORT

PAGE: 6

NORSK HYDRO A/S  
TROLL  
31/3-2

OFFSHORE NORWAY  
15 APRIL 1984  
NR-XS-40061

D.S.T.2. PRE GRAVELPACK TEST. MR-6 PROBE NO. 8. FLOW PERIOD.

DELTA TIME HOURS	ABS PRESSURE (BARS)	TEMP. DEG C	TIME	
4.167	114.626	14.4	20:16: 0	15/ 4/84
4.183	116.280	14.4	20:17: 0	
4.200	115.729	14.5	20:18: 0	
4.217	116.280	14.6	20:19: 0	
4.233	115.384	14.6	20:20: 0	
4.250	115.729	14.5	20:21: 0	
4.267	115.108	14.5	20:22: 0	
4.283	116.211	14.5	20:23: 0	
4.300	116.005	14.7	20:24: 0	
4.317	115.315	14.7	20:25: 0	
4.333	115.177	14.6	20:26: 0	
4.350	115.108	14.6	20:27: 0	
4.367	115.522	14.6	20:28: 0	
4.383	115.522	14.6	20:29: 0	
4.400	115.591	14.7	20:30: 0	
4.417	114.970	14.7	20:31: 0	
4.433	116.625	14.7	20:32: 0	
4.450	115.729	14.7	20:33: 0	
4.467	115.453	14.8	20:34: 0	
4.483	115.384	14.7	20:35: 0	
4.500	115.798	14.8	20:36: 0	
4.517	115.522	14.8	20:37: 0	
4.533	115.729	14.8	20:38: 0	
4.550	115.453	14.8	20:39: 0	
4.567	115.315	14.8	20:40: 0	
4.583	114.970	14.9	20:41: 0	
4.600	115.798	14.8	20:42: 0	
4.617	115.177	14.8	20:43: 0	
4.633	116.211	14.8	20:44: 0	
4.650	115.453	14.9	20:45: 0	
4.667	116.142	14.8	20:46: 0	
4.683	115.936	14.9	20:47: 0	
4.700	115.729	14.9	20:48: 0	
4.717	116.005	14.9	20:49: 0	
4.733	115.660	14.9	20:50: 0	
4.750	115.384	14.9	20:51: 0	
4.767	115.729	14.9	20:52: 0	
4.783	115.729	14.9	20:53: 0	
4.800	115.936	14.9	20:54: 0	
4.817	115.660	14.9	20:55: 0	
4.833	115.798	14.9	20:56: 0	
4.850	115.315	14.9	20:57: 0	
4.867	116.418	14.9	20:58: 0	
4.883	114.557	14.9	20:59: 0	
4.900	115.591	14.9	21: 0: 0	
4.917	115.177	15.0	21: 1: 0	
4.933	115.453	14.9	21: 2: 0	
4.950	115.384	15.0	21: 3: 0	
4.967	114.350	14.9	21: 4: 0	
4.983	115.660	15.0	21: 5: 0	



5/ 9/84

SPERRY-SUN INTERNATIONAL  
MR-SIX PRESSURE GAUGE REPORT

PAGE: 7

NORSK HYDRD A/S  
TROLL  
31/3-2

OFFSHORE NORWAY  
15 APRIL 1984  
NR-XS-40061

D.S.T.2. PRE GRAVELPACK TEST. MR-6 PROBE NO. 8. FLOW PERIOD.

DELTA TIME HOURS	ABS PRESSURE (BARS)	TEMP. DEG C	TIME	
5.000	115.384	14.9	21: 6: 0	15/ 4/84
5.017	116.625	15.0	21: 7: 0	
5.033	116.280	15.2	21: 8: 0	
5.050	114.695	15.2	21: 9: 0	
5.067	117.728	15.3	21:10: 0	
5.083	115.867	15.3	21:11: 0	
5.100	117.177	15.4	21:12: 0	
5.117	115.936	15.3	21:13: 0	
5.133	117.039	15.3	21:14: 0	
5.150	117.039	15.4	21:15: 0	
5.167	116.832	15.3	21:16: 0	
5.183	116.832	15.4	21:17: 0	
5.200	116.901	15.3	21:18: 0	
5.217	116.832	15.3	21:19: 0	
5.233	116.832	15.3	21:20: 0	
5.250	116.901	15.3	21:21: 0	
5.267	116.694	15.2	21:22: 0	
5.283	116.694	15.1	21:23: 0	
5.300	116.487	15.2	21:24: 0	
5.317	116.280	15.1	21:25: 0	
5.333	117.039	15.4	21:26: 0	
5.350	115.522	15.6	21:27: 0	
5.367	116.625	15.5	21:28: 0	
5.383	115.591	15.4	21:29: 0	
5.400	116.763	15.2	21:30: 0	
5.417	116.349	15.4	21:31: 0	
5.433	116.280	15.2	21:32: 0	
5.450	116.625	15.4	21:33: 0	
5.467	116.142	15.3	21:34: 0	
5.483	117.590	15.6	21:35: 0	
5.500	115.798	15.3	21:36: 0	
5.517	116.487	15.2	21:37: 0	
5.533	117.659	15.6	21:38: 0	
5.550	116.142	15.5	21:39: 0	
5.567	116.625	15.6	21:40: 0	
5.583	116.694	15.5	21:41: 0	
5.600	116.418	15.5	21:42: 0	
5.617	116.694	15.5	21:43: 0	
5.633	116.832	15.5	21:44: 0	
5.650	116.487	15.4	21:45: 0	
5.667	116.556	15.4	21:46: 0	
5.683	116.349	15.3	21:47: 0	
5.700	116.832	15.3	21:48: 0	
5.717	116.349	15.4	21:49: 0	
5.733	116.349	15.3	21:50: 0	
5.750	116.487	15.4	21:51: 0	
5.767	116.487	15.5	21:52: 0	
5.783	116.625	15.5	21:53: 0	
5.800	116.625	15.2	21:54: 0	
5.817	116.418	15.2	21:55: 0	

5/ 9/84

SPERRY-SUN INTERNATIONAL  
MR-SIX PRESSURE GAUGE REPORT

PAGE: 8

NORSK HYDRO A/S  
TROLL  
31/3-2

OFFSHORE NORWAY  
15 APRIL 1984  
NR-XS-40061

D.S.T.2. PRE GRAVELPACK TEST. MR-6 PROBE NO. 8. FLOW PERIOD.

DELTA TIME HOURS	ABS PRESSURE (BARS)	TEMP. DEG C	TIME	
5.833	116.694	15.4	21:56: 0	15/ 4/84
5.850	116.280	15.6	21:57: 0	
5.867	116.556	15.1	21:58: 0	
5.883	116.487	15.3	21:59: 0	
5.900	116.694	15.2	22: 0: 0	
5.917	116.142	15.2	22: 1: 0	
5.933	116.487	15.2	22: 2: 0	
5.950	116.349	15.1	22: 3: 0	
5.967	116.625	15.3	22: 4: 0	
5.983	116.418	15.4	22: 5: 0	
6.000	116.625	15.3	22: 6: 0	
6.017	116.487	15.3	22: 7: 0	
6.033	116.349	15.3	22: 8: 0	
6.050	116.349	15.3	22: 9: 0	
6.067	116.625	15.3	22:10: 0	
6.083	116.280	15.3	22:11: 0	
6.100	116.487	15.4	22:12: 0	
6.117	116.280	15.2	22:13: 0	
6.133	116.418	15.4	22:14: 0	
6.150	116.280	15.5	22:15: 0	
6.167	116.418	15.3	22:16: 0	
6.183	116.556	15.4	22:17: 0	
6.200	116.556	15.3	22:18: 0	
6.217	116.487	15.4	22:19: 0	
6.233	116.556	15.5	22:20: 0	
6.250	116.556	15.4	22:21: 0	
6.267	116.487	15.6	22:22: 0	
6.283	116.694	15.5	22:23: 0	
6.300	116.901	15.6	22:24: 0	
6.317	116.763	15.5	22:25: 0	
6.333	116.763	15.7	22:26: 0	
6.350	116.625	15.5	22:27: 0	
6.367	116.625	15.5	22:28: 0	
6.383	116.625	15.6	22:29: 0	
6.400	116.901	15.6	22:30: 0	
6.417	116.694	15.5	22:31: 0	
6.433	116.625	15.6	22:32: 0	
6.450	116.832	15.6	22:33: 0	
6.467	116.625	15.4	22:34: 0	
6.483	116.556	15.6	22:35: 0	
6.500	116.763	15.5	22:36: 0	
6.517	116.970	15.5	22:37: 0	
6.533	116.625	15.6	22:38: 0	
6.550	116.901	15.6	22:39: 0	
6.567	116.694	15.6	22:40: 0	
6.583	116.694	15.6	22:41: 0	
6.600	116.901	15.6	22:42: 0	
6.617	116.418	15.4	22:43: 0	
6.633	116.901	15.7	22:44: 0	
6.650	116.763	15.5	22:45: 0	

5/ 9/84

SPERRY-SUN INTERNATIONAL  
MR-SIX PRESSURE GAUGE REPORT

PAGE: 9

NORSK HYDRO A/S  
TROLL  
31/3-2

OFFSHORE NORWAY  
15 APRIL 1984  
NR-XS-40061

D.S.T.2. PRE GRAVELPACK TEST. MR-6 PROBE NO. 8. FLOW PERIOD.

DELTA TIME HOURS	ABS PRESSURE (BARS)	TEMP. DEG C	TIME	
6.667	116.901	15.8	22:46: 0	15/ 4/84
6.683	116.763	15.6	22:47: 0	
6.700	116.694	15.4	22:48: 0	
6.717	116.763	15.7	22:49: 0	
6.733	116.625	15.4	22:50: 0	
6.750	116.970	15.4	22:51: 0	
6.767	116.832	15.6	22:52: 0	
6.783	116.970	15.6	22:53: 0	
6.800	116.901	15.5	22:54: 0	
6.817	116.694	15.6	22:55: 0	
6.833	116.901	15.4	22:56: 0	
6.850	116.970	15.7	22:57: 0	
6.867	116.901	15.4	22:58: 0	
6.883	116.763	15.4	22:59: 0	
6.900	116.832	15.4	23: 0: 0	
6.917	116.901	15.4	23: 1: 0	
6.933	116.694	15.4	23: 2: 0	
6.950	116.901	15.4	23: 3: 0	
6.967	116.970	15.5	23: 4: 0	
6.983	116.418	15.4	23: 5: 0	

END OF FLOW PERIOD.

5/ 9/84

SPERRY-SUN INTERNATIONAL  
MR-SIX PRESSURE GAUGE REPORT

PAGE: 1

NORSK HYDRO A/S  
TROLL  
31/3-2

OFFSHORE NORWAY  
15 APRIL 1984  
NR-XS-40061

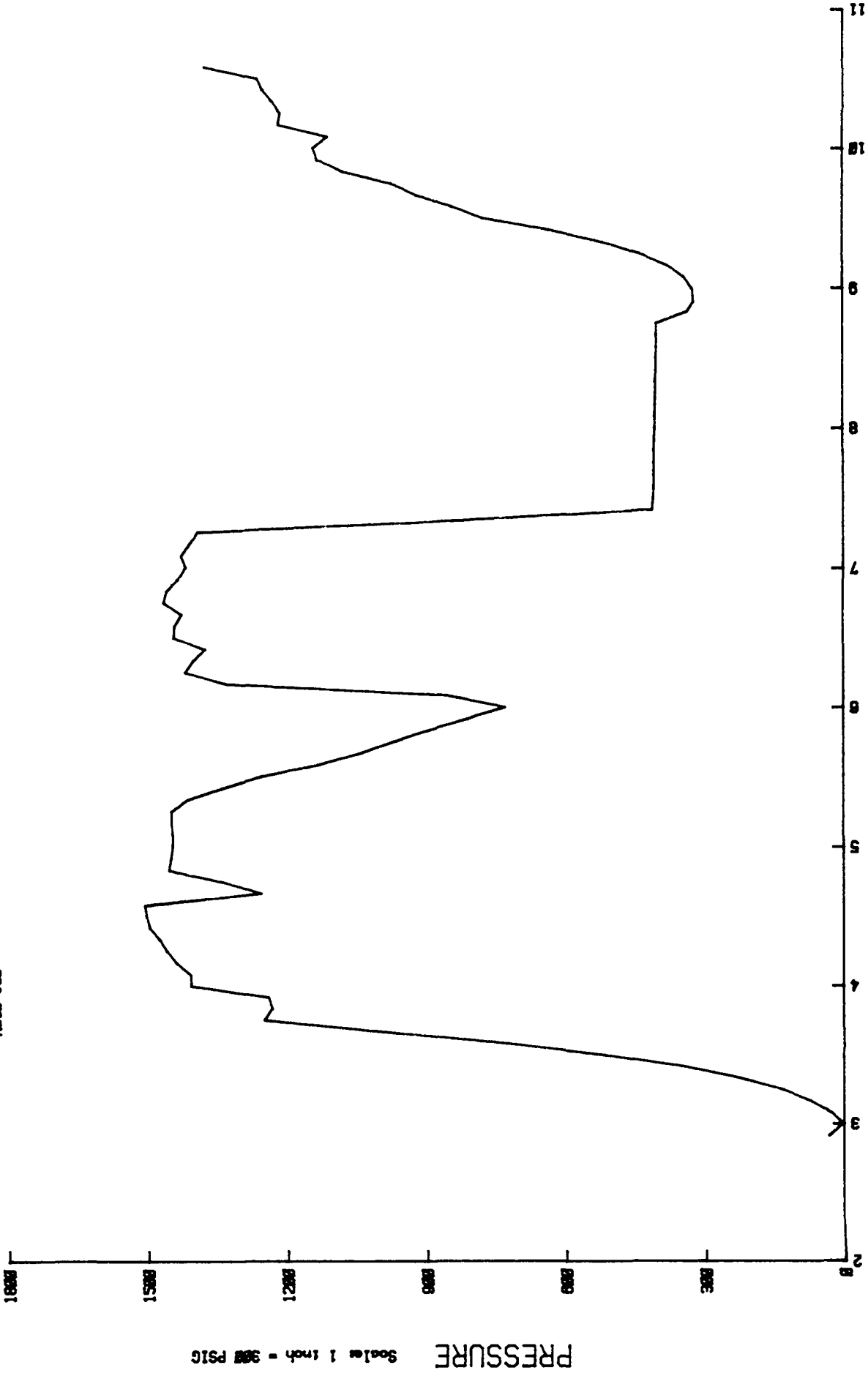
D.S.T.2. PRE GRAVELPACK TEST. MR-6 PROBE NO. 8. BUILD-UP PERIOD.

DELTA TIME HOURS	ABS PRESSURE (BARS)	TEMP. DEG C	TIME	
0.000	116.418	15.4	23: 5: 0	15/ 4/84 WELL SHUT-IN AT PCT
0.083	114.970	15.3	23:10: 0	VALVE AND CHOKE
0.167	114.901	15.2	23:15: 0	MANIFOLD.
0.233	114.970	15.0	23:19: 0	
0.333	115.177	15.0	23:25: 0	
0.417	115.246	14.8	23:30: 0	
0.500	115.384	14.8	23:35: 0	
0.583	115.453	14.8	23:40: 0	
0.667	115.522	14.9	23:45: 0	
0.750	115.591	15.1	23:50: 0	
0.833	115.729	14.7	23:55: 0	
0.917	115.729	15.1	0: 0: 0	16/ 4/84
1.000	115.798	15.0	0: 5: 0	
1.083	115.867	14.6	0:10: 0	
1.167	115.798	14.9	0:15: 0	
1.250	115.867	14.7	0:20: 0	
1.333	115.867	14.4	0:25: 0	
1.417	115.867	14.4	0:30: 0	
1.500	115.798	14.3	0:35: 0	
1.583	115.798	14.3	0:40: 0	
1.667	115.729	13.9	0:45: 0	
1.750	115.729	14.0	0:50: 0	
1.833	115.729	13.9	0:55: 0	
1.917	115.660	13.9	1: 0: 0	
2.000	115.660	13.9	1: 5: 0	
2.083	115.591	13.8	1:10: 0	
2.167	115.591	13.8	1:15: 0	
2.250	115.522	13.8	1:20: 0	
2.333	115.522	13.7	1:25: 0	
2.417	115.453	13.6	1:30: 0	
2.500	115.453	13.7	1:35: 0	
2.583	115.453	13.8	1:40: 0	
2.667	115.384	13.7	1:45: 0	
2.750	115.453	13.8	1:50: 0	
2.833	115.384	13.7	1:55: 0	END OF TEST.

NORSK HYDRO A/S  
31/3-2  
TROLL  
ACID JOB

# NL Sperry-Sun, Inc. PRESSURE/TEMP. Vs TIME PLOT

18 APRIL 1984  
UPSTREAM CHOKE  
MR-8 PROBE NO. 288  
028810



PRESSURE  
Scale: 1 inch = 300 PSIG

REAL TIME  
Scale: 1 inch = 1 hour

5/10/84

SPERRY-SUN INTERNATIONAL  
MR-SIX PRESSURE GAUGE REPORT

PAGE: 1

NORSK HYDRO A/S  
TROLL  
31/3-2

OFFSHORE NORWAY  
20 APRIL 1984  
NR-XS-40061

D.S.T.3. MR-6 PROBE NO.288. ACIDIZING PERIOD.

DELTA TIME HOURS	ABS PRESSURE (BARS)	TEMP. DEG C	TIME	
0.000	1.069	4.8	3: 0: 0	20/ 4/84 WELL OPENED TO FLOW
0.083	2.862	5.3	3: 5: 0	ON 24/64" ADJ. CHOKE
0.167	5.895	5.1	3:10: 0	AT 02:57.
0.250	10.032	5.1	3:15: 0	
0.333	16.444	5.2	3:20: 0	
0.417	24.787	5.8	3:25: 0	
0.500	36.439	6.1	3:30: 0	
0.583	51.125	6.4	3:35: 0	
0.667	69.465	6.9	3:40: 0	
0.750	87.184	7.4	3:45: 0	
0.833	86.012	7.4	3:50: 0	
0.917	86.564	7.3	3:55: 0	
1.000	98.009	7.4	4: 0: 0	
1.083	98.147	6.7	4: 5: 0	
1.167	100.216	6.4	4:10: 0	
1.250	101.594	6.3	4:15: 0	
1.333	102.698	6.3	4:20: 0	
1.417	104.146	6.4	4:25: 0	
1.500	104.628	6.3	4:30: 0	
1.583	104.904	6.2	4:35: 0	
1.667	87.598	6.2	4:40: 0	INCREASE TO 48/64"ADJ.
1.750	93.114	7.5	4:45: 0	CHOKE BY 04:38.
1.833	101.250	7.3	4:50: 0	INCREASE TO 64/64" ADJ.
1.917	100.974	7.0	4:55: 0	CHOKE AT 04:42.
2.000	100.698	6.7	5: 0: 0	WELL SHUT-IN AT 04:45.
2.083	100.698	6.3	5: 5: 0	
2.167	100.836	6.1	5:10: 0	
2.250	100.836	5.8	5:15: 0	
2.333	98.423	5.6	5:20: 0	
2.417	93.321	5.4	5:25: 0	
2.500	87.529	5.1	5:30: 0	
2.583	79.049	4.9	5:35: 0	
2.667	72.912	4.8	5:40: 0	
2.750	67.948	4.6	5:45: 0	
2.833	62.708	4.5	5:50: 0	
2.917	56.779	4.3	5:55: 0	
3.000	51.194	4.2	6: 0: 0	
3.083	59.743	4.4	6: 5: 0	
3.167	92.631	4.8	6:10: 0	
3.250	98.699	4.8	6:15: 0	
3.333	97.527	4.8	6:20: 0	
3.417	95.803	4.8	6:25: 0	
3.500	100.353	4.8	6:30: 0	
3.583	100.284	4.8	6:35: 0	
3.667	99.181	4.7	6:40: 0	
3.750	101.870	4.7	6:45: 0	
3.833	101.388	4.7	6:50: 0	
3.917	99.733	4.7	6:55: 0	
4.000	98.630	4.7	7: 0: 0	
4.083	99.319	4.7	7: 5: 0	COMMENCE PUMPING ACID.

5/10/84

SPERRY-SUN INTERNATIONAL  
MR-SIX PRESSURE GAUGE REPORT

PAGE: 2

NORSK HYDRO A/S  
TROLL  
31/3-2

OFFSHORE NORWAY  
20 APRIL 1984  
NR-XS-40061

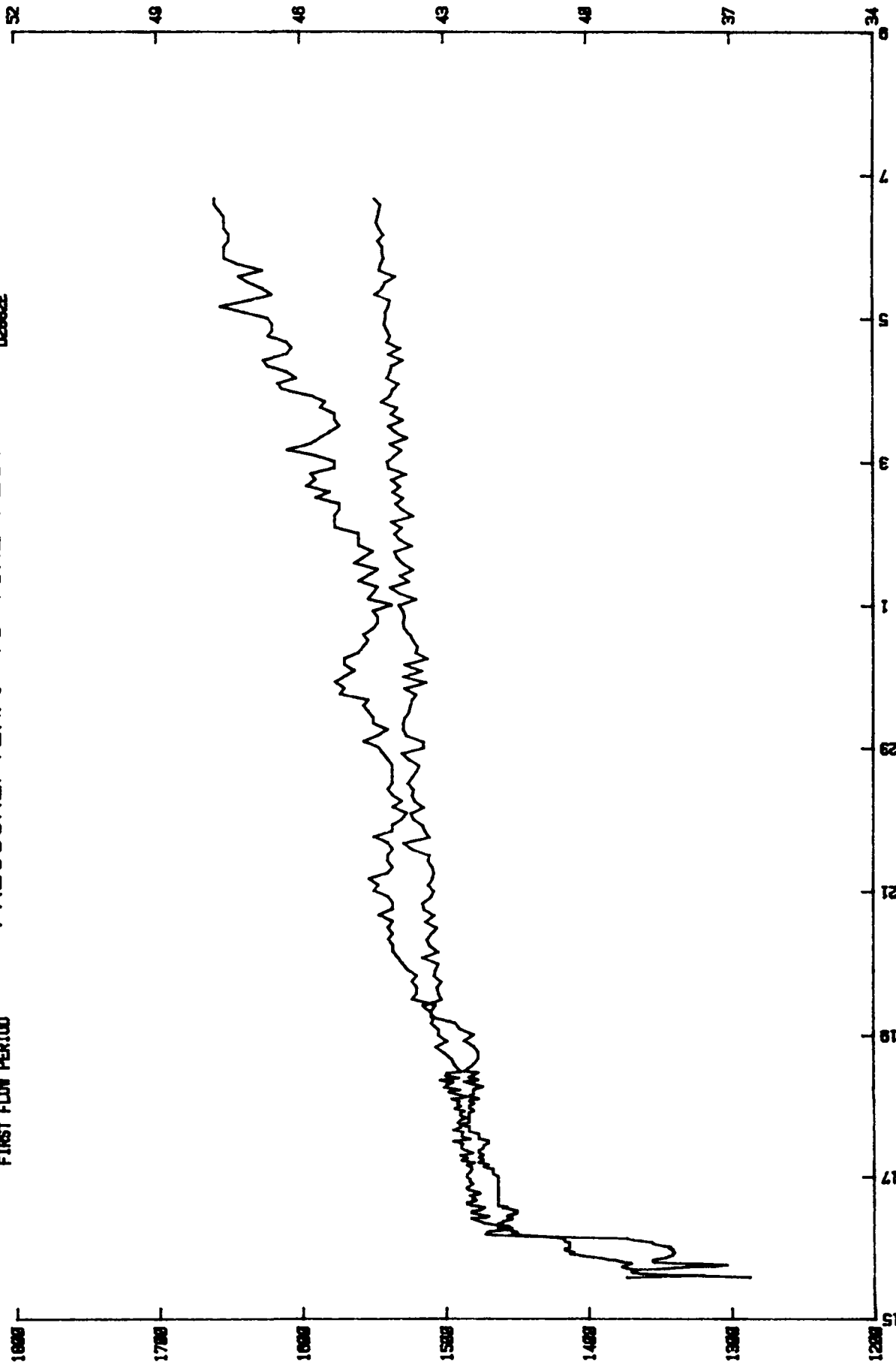
D.S.T.3. MR-6 PROBE NO.288. ACIDIZING PERIOD.

DELTA TIME HOURS	ABS PRESSURE (BARS)	TEMP. DEG C	TIME	
4.167	98.078	4.7	7:10: 0	20/ 4/84
4.250	96.837	4.6	7:15: 0	
4.333	58.916	4.4	7:20: 0	COMPLETE PUMPING ACID.
4.417	29.269	4.0	7:25: 0	
4.500	29.131	4.1	7:30: 0	
4.583	29.062	4.1	7:35: 0	COMMENCE OBSERVE WELL.
4.667	29.062	4.2	7:40: 0	
4.750	29.062	4.2	7:45: 0	
4.833	28.993	4.2	7:50: 0	
4.917	28.924	4.2	7:55: 0	
5.000	28.855	4.2	8: 0: 0	
5.083	28.855	4.1	8: 5: 0	
5.167	28.786	4.3	8:10: 0	
5.250	28.717	4.3	8:15: 0	
5.333	28.717	4.3	8:20: 0	
5.417	28.648	4.3	8:25: 0	
5.500	28.648	4.4	8:30: 0	
5.583	28.579	4.4	8:35: 0	
5.667	28.579	4.6	8:40: 0	
5.750	28.579	4.5	8:45: 0	WELL OPENED TO FLOW ON 24/64" ADJ. CHOKE. AT 08:48.
5.833	24.028	4.8	8:50: 0	
5.900	23.063	4.8	8:54: 0	
6.000	23.270	4.9	9: 0: 0	
6.083	24.580	5.2	9: 5: 0	
6.167	27.062	5.4	9:10: 0	
6.250	30.992	5.5	9:15: 0	
6.333	36.577	5.8	9:20: 0	
6.417	44.506	6.0	9:25: 0	
6.500	54.296	6.2	9:30: 0	GAS TO SURFACE.
6.583	58.847	5.8	9:35: 0	
6.667	64.225	5.5	9:40: 0	INCREASE TO 32/64" ADJ.CHOKE.
6.750	67.948	5.4	9:45: 0	
6.833	75.050	5.7	9:50: 0	
6.917	78.911	5.8	9:55: 0	
7.000	79.462	5.8	10: 0: 0	
7.083	77.325	5.5	10: 5: 0	
7.167	84.633	6.4	10:10: 0	
7.250	84.358	8.7	10:15: 0	
7.333	85.599	9.7	10:20: 0	
7.417	87.047	10.2	10:25: 0	
7.500	87.805	10.4	10:30: 0	END OF POST ACIDIZING FLOW.
7.583	95.596	10.4	10:35: 0	

NORSK HYDRO A/S  
31/3-2  
TROLL  
FIRST FLOW PERIOD

# NL Sperry-Sun, Inc. PRESSURE/TEMP. Vs TIME PLOT

28 APRIL 1984  
UPSTREAM CHOKE  
NR-8 PROBE NO. 288  
020802E



REAL TIME  
Scale 1 inch = 2 hours

PRESSURE  
Scale 1 inch = 100 PSIG

TEMPERATURE  
Scale 1 inch = 3 (deg. F)



5/10/84

SPERRY-SUN INTERNATIONAL  
MR-SIX PRESSURE GAUGE REPORT

PAGE: 1

NORSK HYDRO A/S  
TROLL  
31/3-2OFFSHORE NORWAY  
20 APRIL 1984  
NR-XS-40061

D.S.T.4.POST GRAVELPACK TEST. MR-6 PROBE NO.288. FIRST FLOW.

DELTA TIME HOURS	ABS PRESSURE (BARS)	TEMP. DEG C	TIME	
0.000	95.665	2.6	15:35: 0	20/ 4/84 WELL OPENED TO FLOW AT 24/64" ADJ. CHOKE.
0.017	94.148	3.0	15:36: 0	
0.033	91.942	3.6	15:37: 0	
0.050	94.424	3.8	15:38: 0	
0.067	95.389	3.9	15:39: 0	
0.083	95.458	3.9	15:40: 0	
0.100	95.458	3.9	15:41: 0	
0.117	95.389	3.9	15:42: 0	
0.133	93.872	4.0	15:43: 0	
0.150	92.976	4.1	15:44: 0	
0.167	91.459	4.0	15:45: 0	
0.183	90.839	4.0	15:46: 0	
0.200	92.149	3.9	15:47: 0	
0.217	94.355	4.1	15:48: 0	
0.233	94.424	4.1	15:49: 0	
0.250	94.424	4.2	15:50: 0	
0.267	94.148	4.3	15:51: 0	
0.283	93.803	4.4	15:52: 0	
0.300	93.666	4.5	15:53: 0	
0.317	93.459	4.6	15:54: 0	
0.333	93.459	4.7	15:55: 0	
0.350	93.390	4.6	15:56: 0	
0.367	93.390	4.7	15:57: 0	
0.383	93.459	4.7	15:58: 0	
0.400	93.459	4.7	15:59: 0	
0.417	93.666	4.7	16: 0: 0	
0.433	93.597	4.7	16: 1: 0	
0.450	93.872	4.7	16: 2: 0	
0.467	94.286	4.7	16: 3: 0	
0.483	94.424	4.7	16: 4: 0	
0.500	94.493	4.7	16: 5: 0	
0.517	94.976	4.7	16: 6: 0	
0.533	95.389	4.7	16: 7: 0	
0.550	95.665	4.8	16: 8: 0	
0.567	98.216	4.9	16: 9: 0	
0.583	100.491	5.1	16:10: 0	
0.600	102.008	5.3	16:11: 0	
0.617	102.491	5.3	16:12: 0	
0.633	102.422	5.3	16:13: 0	
0.650	102.284	5.3	16:14: 0	
0.667	101.870	5.4	16:15: 0	
0.683	101.457	5.4	16:16: 0	
0.700	101.250	5.5	16:17: 0	
0.717	101.388	5.5	16:18: 0	
0.733	101.870	5.5	16:19: 0	
0.750	102.284	5.5	16:20: 0	
0.767	102.560	5.4	16:21: 0	
0.783	102.698	5.4	16:22: 0	
0.800	102.904	5.4	16:23: 0	
0.817	103.042	5.3	16:24: 0	

5/10/84

SPERRY-SUN INTERNATIONAL  
MR-SIX PRESSURE GAUGE REPORT

PAGE: 2

NORSK HYDRO A/S  
TROLL  
31/3-2OFFSHORE NORWAY  
20 APRIL 1984  
NR-XS-40061

D.S.T.4.POST GRAVELPACK TEST. MR-6 PROBE NO.288. FIRST FLOW.

DELTA TIME HOURS	ABS PRESSURE (BARS)	TEMP. DEG C	TIME	
0.833	103.180	5.3	16:25: 0	20/ 4/84
0.850	102.491	5.4	16:26: 0	
0.867	102.353	5.4	16:27: 0	
0.883	102.767	5.3	16:28: 0	
0.900	102.973	5.3	16:29: 0	
0.917	103.180	5.3	16:30: 0	
0.933	103.111	5.3	16:31: 0	
0.950	102.767	5.3	16:32: 0	
0.967	102.629	5.4	16:33: 0	
0.983	102.560	5.4	16:34: 0	
1.000	102.836	5.5	16:35: 0	
1.017	103.180	5.5	16:36: 0	
1.033	103.387	5.5	16:37: 0	
1.050	103.387	5.5	16:38: 0	
1.067	103.111	5.5	16:39: 0	
1.083	102.973	5.5	16:40: 0	
1.100	103.111	5.5	16:41: 0	
1.117	103.042	5.5	16:42: 0	
1.133	103.111	5.5	16:43: 0	
1.150	103.249	5.5	16:44: 0	
1.167	103.042	5.5	16:45: 0	
1.183	102.767	5.5	16:46: 0	
1.200	102.836	5.5	16:47: 0	
1.217	103.111	5.5	16:48: 0	
1.233	103.318	5.5	16:49: 0	
1.250	103.387	5.5	16:50: 0	
1.267	103.387	5.5	16:51: 0	
1.317	103.111	5.5	16:54: 0	
1.350	103.249	5.5	16:56: 0	
1.383	103.249	5.5	16:58: 0	
1.417	103.387	5.5	17: 0: 0	
1.450	103.387	5.6	17: 2: 0	
1.483	103.249	5.6	17: 4: 0	
1.517	103.180	5.6	17: 6: 0	
1.550	103.180	5.7	17: 8: 0	
1.583	103.387	5.6	17:10: 0	
1.617	103.042	5.7	17:12: 0	
1.650	103.663	5.7	17:14: 0	
1.683	103.387	5.7	17:16: 0	
1.717	103.732	5.7	17:18: 0	
1.750	103.111	5.7	17:20: 0	
1.783	103.387	5.7	17:22: 0	
1.817	103.663	5.7	17:24: 0	
1.850	103.663	5.7	17:26: 0	
1.883	103.594	5.6	17:28: 0	
1.917	104.077	5.6	17:30: 0	
1.950	103.249	5.7	17:32: 0	
1.983	103.663	5.7	17:34: 0	
2.017	103.663	5.7	17:36: 0	
2.050	103.594	5.8	17:38: 0	

5/10/84

SPERRY-SUN INTERNATIONAL  
MR-SIX PRESSURE GAUGE REPORT

PAGE: 3

NORSK HYDRO A/S  
TROLL  
31/3-2OFFSHORE NORWAY  
20 APRIL 1984  
NR-XS-40061

D.S.T.4.POST GRAVELPACK TEST. MR-6 PROBE NO.288. FIRST FLOW.

DELTA TIME HOURS	ABS PRESSURE (BARS)	TEMP. DEG C	TIME	
2.083	104.077	5.8	17:40: 0	20/ 4/84
2.117	103.732	5.8	17:42: 0	
2.150	103.732	5.9	17:44: 0	
2.183	103.870	5.8	17:46: 0	
2.217	103.732	5.8	17:48: 0	
2.250	103.387	5.8	17:50: 0	
2.283	103.732	5.8	17:52: 0	
2.317	103.732	5.8	17:54: 0	
2.350	103.525	5.8	17:56: 0	
2.383	104.008	5.8	17:58: 0	
2.417	103.732	5.8	18: 0: 0	
2.450	103.870	5.8	18: 2: 0	
2.483	103.801	5.8	18: 4: 0	
2.517	104.146	5.7	18: 6: 0	
2.550	103.387	5.8	18: 8: 0	
2.583	103.870	5.8	18:10: 0	
2.617	104.283	5.8	18:12: 0	
2.650	103.732	5.8	18:14: 0	
2.683	104.490	5.7	18:16: 0	
2.717	104.352	5.8	18:18: 0	
2.750	104.077	5.9	18:20: 0	
2.783	104.697	5.7	18:22: 0	
2.817	103.801	5.8	18:24: 0	
2.850	104.421	5.8	18:26: 0	
2.883	104.352	5.7	18:28: 0	
2.900	103.663	5.9	18:29: 0	
3.000	104.008	5.8	18:35: 0	
3.083	104.146	5.7	18:40: 0	
3.167	104.490	5.7	18:45: 0	
3.250	104.904	5.8	18:50: 0	
3.333	104.352	5.9	18:55: 0	
3.417	104.766	5.8	19: 0: 0	
3.500	104.766	5.9	19: 5: 0	
3.583	105.111	6.0	19:10: 0	
3.667	104.973	6.3	19:15: 0	
3.750	105.180	6.3	19:20: 0	
3.833	105.525	6.2	19:25: 0	
3.917	104.628	6.5	19:30: 0	
4.000	104.766	6.4	19:35: 0	
4.083	104.835	6.4	19:40: 0	
4.167	104.628	6.5	19:45: 0	
4.250	104.973	6.4	19:50: 0	
4.333	104.904	6.6	19:55: 0	
4.417	104.766	6.6	20: 0: 0	
4.500	105.525	6.7	20: 5: 0	
4.583	104.766	6.7	20:10: 0	
4.667	105.180	6.7	20:15: 0	
4.750	105.318	6.8	20:20: 0	
4.833	105.111	6.7	20:25: 0	
4.917	104.835	6.8	20:30: 0	

5/10/84

SPERRY-SUN INTERNATIONAL  
MR-SIX PRESSURE GAUGE REPORT

PAGE: 4

NORSK HYDRO A/S  
TROLL  
31/3-2

OFFSHORE NORWAY  
20 APRIL 1984  
NR-XS-40061

D.S.T.4.POST GRAVELPACK TEST. MR-6 PROBE NO.288. FIRST FLOW.

DELTA TIME HOURS	ABS PRESSURE (BARS)	TEMP. DEG C	TIME	
5.000	105.387	6.7	20:35: 0	20/ 4/84
5.083	104.973	6.9	20:40: 0	
5.167	105.456	6.7	20:45: 0	
5.250	105.525	6.7	20:50: 0	
5.333	105.111	6.8	20:55: 0	
5.417	104.973	6.9	21: 0: 0	
5.500	105.249	6.9	21: 5: 0	
5.583	105.042	7.0	21:10: 0	
5.667	104.973	6.8	21:15: 0	
5.750	105.042	6.7	21:20: 0	
5.833	105.249	6.8	21:25: 0	
5.917	105.180	6.8	21:30: 0	
6.000	106.007	6.7	21:35: 0	
6.083	106.421	6.8	21:40: 0	
6.167	105.180	6.9	21:45: 0	
6.250	105.387	6.7	21:50: 0	
6.333	105.525	6.7	21:55: 0	
6.417	105.938	6.6	22: 0: 0	
6.500	106.076	6.6	22: 5: 0	
6.583	105.456	6.7	22:10: 0	
6.667	105.869	6.6	22:15: 0	
6.750	106.007	6.7	22:20: 0	
6.833	105.938	6.8	22:25: 0	
6.917	106.214	6.7	22:30: 0	
7.000	106.007	6.7	22:35: 0	
7.083	105.800	6.7	22:40: 0	
7.167	105.662	6.7	22:45: 0	
7.250	106.145	6.8	22:50: 0	
7.333	106.490	6.8	22:55: 0	
7.417	105.456	6.9	23: 0: 0	
7.500	105.456	7.1	23: 5: 0	
7.583	106.283	6.9	23:10: 0	
7.667	106.421	6.8	23:15: 0	
7.750	106.421	6.9	23:20: 0	
7.833	106.352	6.9	23:25: 0	
7.917	106.145	7.0	23:30: 0	
8.000	106.076	7.1	23:35: 0	
8.083	106.007	7.0	23:40: 0	
8.167	105.800	7.3	23:45: 0	
8.250	106.352	7.3	23:50: 0	
8.333	105.318	7.4	23:55: 0	
8.417	106.421	7.3	0: 0: 0	21/ 4/84
8.500	105.525	7.2	0: 5: 0	
8.583	106.352	7.3	0:10: 0	
8.667	105.249	7.3	0:15: 0	
8.750	105.800	7.1	0:20: 0	
8.833	105.731	7.1	0:25: 0	
8.917	105.938	7.0	0:30: 0	
9.000	106.076	7.1	0:35: 0	
9.083	106.352	6.9	0:40: 0	

5/10/84

SPERRY-SUN INTERNATIONAL  
MR-SIX PRESSURE GAUGE REPORT

PAGE: 5

NORSK HYDRO A/S  
TROLL  
31/3-2

OFFSHORE NORWAY  
20 APRIL 1984  
NR-XS-40061

D.S.T.4.POST GRAVELPACK TEST. MR-6 PROBE NO.288. FIRST FLOW.

DELTA TIME HOURS	ABS PRESSURE (BARS)	TEMP. DEG C	TIME	
9.167	106.421	6.9	0:45: 0	21/ 4/84
9.250	106.352	6.9	0:50: 0	
9.333	106.421	6.9	0:55: 0	
9.417	106.628	6.7	1: 0: 0	
9.500	105.800	7.0	1: 5: 0	
9.583	106.559	6.9	1:10: 0	
9.667	107.041	6.9	1:15: 0	
9.750	106.145	7.1	1:20: 0	
9.833	106.559	7.0	1:25: 0	
9.917	105.938	6.9	1:30: 0	
10.000	106.421	7.2	1:35: 0	
10.083	106.697	7.1	1:40: 0	
10.167	106.835	6.9	1:45: 0	
10.250	106.007	7.1	1:50: 0	
10.333	106.559	7.1	1:55: 0	
10.417	106.835	7.1	2: 0: 0	
10.500	106.490	7.4	2: 5: 0	
10.583	106.972	7.4	2:10: 0	
10.667	105.938	7.4	2:15: 0	
10.750	106.421	7.3	2:20: 0	
10.833	106.766	7.3	2:25: 0	
10.917	106.421	7.6	2:30: 0	
11.000	106.903	7.4	2:35: 0	
11.083	106.559	7.7	2:40: 0	
11.167	106.972	7.6	2:45: 0	
11.250	106.283	7.7	2:50: 0	
11.333	107.110	7.4	2:55: 0	
11.417	107.179	7.4	3: 0: 0	
11.500	106.835	7.6	3: 5: 0	
11.583	106.490	7.9	3:10: 0	
11.667	107.041	7.7	3:15: 0	
11.750	106.214	7.6	3:20: 0	
11.833	106.766	7.4	3:25: 0	
11.917	107.110	7.3	3:30: 0	
12.000	106.421	7.4	3:35: 0	
12.083	106.972	7.4	3:40: 0	
12.167	106.697	7.6	3:45: 0	
12.250	107.455	7.5	3:50: 0	
12.333	107.041	7.7	3:55: 0	
12.417	106.903	8.0	4: 0: 0	
12.500	106.628	8.1	4: 5: 0	
12.583	107.179	7.8	4:10: 0	
12.667	107.041	7.9	4:15: 0	
12.750	106.972	8.2	4:20: 0	
12.833	106.421	8.2	4:25: 0	
12.917	107.110	7.9	4:30: 0	
13.000	106.559	7.9	4:35: 0	
13.083	107.179	7.9	4:40: 0	
13.167	107.041	8.2	4:45: 0	
13.250	107.179	8.1	4:50: 0	

5/10/84

SPERRY-SUN INTERNATIONAL  
MR-SIX PRESSURE GAUGE REPORT

PAGE: 6

NORSK HYDRO A/S  
TROLL  
31/3-2

OFFSHORE NORWAY  
20 APRIL 1984  
NR-XS-40061

D.S.T.4.POST GRAVELPACK TEST. MR-6 PROBE NO.288. FIRST FLOW.

DELTA TIME HOURS	ABS PRESSURE (BARS)	TEMP. DEG C	TIME	
13.333	107.317	8.1	4:55: 0	21/ 4/84
13.417	107.248	8.2	5: 0: 0	
13.500	107.248	8.4	5: 5: 0	
13.583	107.110	8.7	5:10: 0	
13.667	107.041	8.4	5:15: 0	
13.750	107.731	8.1	5:20: 0	
13.833	107.386	8.2	5:25: 0	
13.917	107.248	8.4	5:30: 0	
14.000	106.766	8.5	5:35: 0	
14.083	107.524	8.2	5:40: 0	
14.167	107.455	8.5	5:45: 0	
14.250	107.317	8.7	5:50: 0	
14.333	107.386	8.7	5:55: 0	
14.417	107.386	8.7	6: 0: 0	
14.500	107.593	8.6	6: 5: 0	
14.583	107.317	8.6	6:10: 0	
14.667	107.524	8.7	6:15: 0	
14.750	107.662	8.7	6:20: 0	
14.833	107.593	8.7	6:25: 0	
14.917	107.524	8.7	6:30: 0	
15.000	107.455	8.8	6:35: 0	
15.083	107.731	8.8	6:40: 0	

END OF FLOW PERIOD.

5/10/84

SPERRY-SUN INTERNATIONAL  
MR-SIX PRESSURE GAUGE REPORT

PAGE: 1

NORSK HYDRO A/S  
TROLL  
31/3-2

OFFSHORE NORWAY  
21 APRIL 1984  
NR-XS-40061

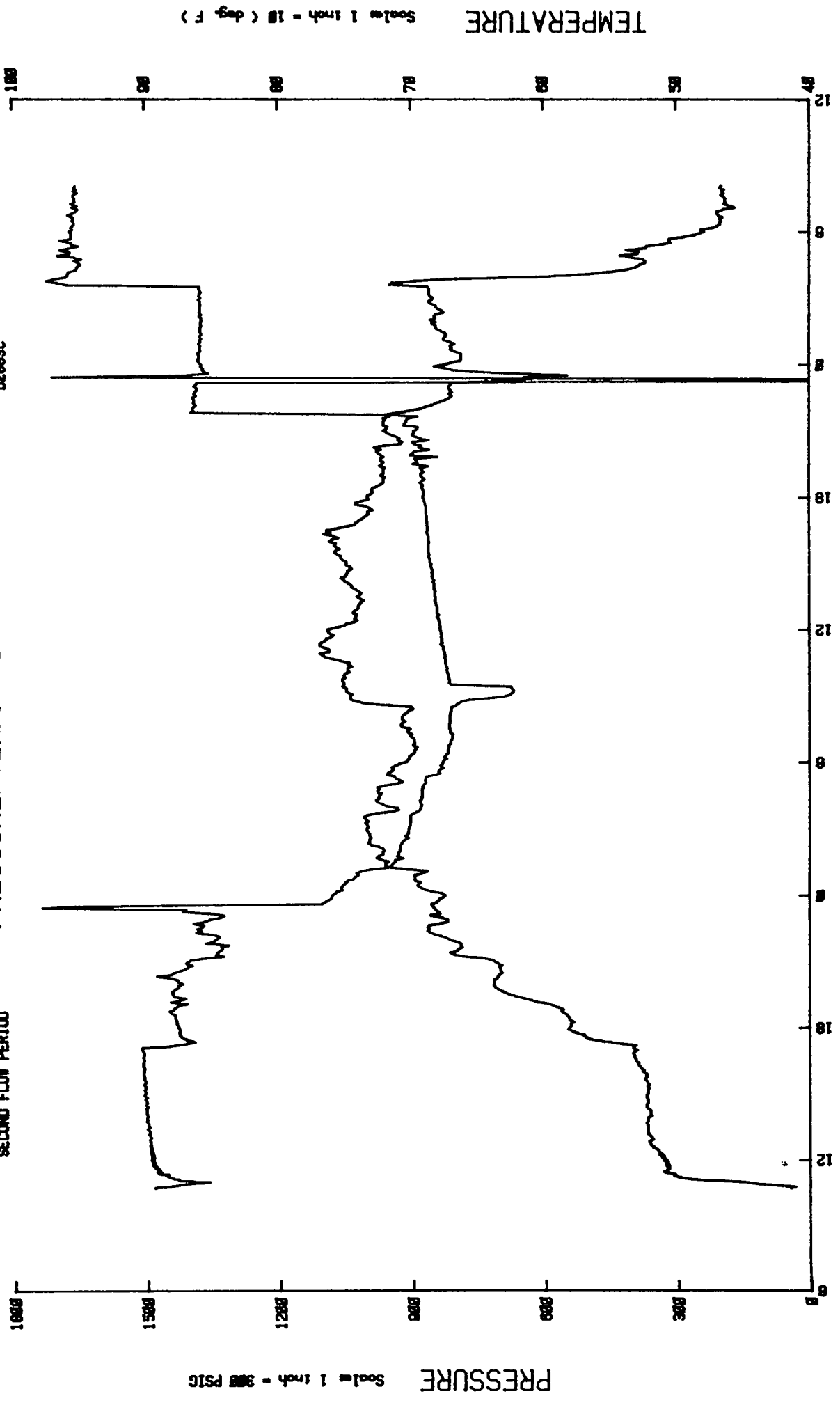
D.S.T.4.POST GRAVELPACK TEST. MR-6 PROBE NO.288. FIRST BUILD-UP.

DELTA TIME HOURS	ABS PRESSURE (BARS)	TEMP. DEG C	TIME	
-0.083	107.731	8.8	6:40: 0	21/ 4/84 WELL SHUT-IN AT
0.000	106.076	8.9	6:45: 0	PCT VALVE.
0.250	102.422	6.6	7: 0: 0	
0.500	101.801	5.6	7:15: 0	
0.750	101.663	5.3	7:30: 0	
1.000	101.594	5.0	7:45: 0	
1.250	101.594	4.9	8: 0: 0	
1.500	101.594	4.9	8:15: 0	
1.750	101.594	4.9	8:30: 0	
2.000	101.594	4.9	8:45: 0	
2.250	101.594	4.9	9: 0: 0	
2.500	101.594	4.9	9:15: 0	
2.750	101.594	4.9	9:30: 0	
3.000	101.663	5.1	9:45: 0	
3.250	101.663	5.0	10: 0: 0	
3.500	101.732	5.1	10:15: 0	
3.750	101.732	5.2	10:30: 0	
4.000	102.904	5.2	10:45: 0	END OF BUILD-UP.

NL Sperry-Sun, Inc.  
PRESSURE/TEMP. V<sub>s</sub> TIME PLOT

21 APRIL 1984  
UPSTREAM CHOKE  
MR-6 PROBE NO. 268  
DZ889C

NORSK HYDRO A/S  
31/3-2  
TROLL  
SECOND FLOW PERIOD





5/10/84

SPERRY-SUN INTERNATIONAL  
MR-SIX PRESSURE GAUGE REPORT

PAGE: 1

NORSK HYDRO A/S  
TROLL  
31/3-2

OFFSHORE NORWAY  
21 APRIL 1984  
NR-XS-40061

D.S.T.4.POST GRAVELPACK TEST. MR-6 PROBE NO.288. SECOND FLOW.

DELTA TIME HOURS	ABS PRESSURE (BARS)	TEMP. DEG C	TIME	
0.000	102.904	5.2	10:45: 0	21/ 4/84 WELL OPENED TO FLOW ON 28/64" ADJ.CHOKE
0.017	101.870	5.1	10:46: 0	
0.033	101.112	5.1	10:47: 0	
0.050	100.836	5.4	10:48: 0	
0.067	100.422	5.7	10:49: 0	
0.083	99.940	5.9	10:50: 0	
0.100	99.595	6.2	10:51: 0	
0.117	99.181	6.3	10:52: 0	
0.133	98.699	6.6	10:53: 0	
0.150	98.216	6.7	10:54: 0	
0.167	97.458	6.8	10:55: 0	
0.183	96.630	6.8	10:56: 0	
0.200	95.872	7.0	10:57: 0	
0.217	95.389	7.1	10:58: 0	
0.233	94.769	7.2	10:59: 0	
0.250	95.320	7.4	11: 0: 0	
0.267	97.458	7.6	11: 1: 0	
0.283	97.527	8.1	11: 2: 0	
0.300	99.526	8.6	11: 3: 0	
0.317	99.595	8.8	11: 4: 0	
0.333	99.664	9.2	11: 5: 0	
0.350	99.664	9.4	11: 6: 0	
0.367	99.733	9.4	11: 7: 0	
0.383	100.422	9.6	11: 8: 0	
0.400	100.422	9.7	11: 9: 0	
0.417	100.629	9.8	11:10: 0	
0.433	100.767	9.8	11:11: 0	
0.450	100.905	9.9	11:12: 0	
0.467	101.181	9.9	11:13: 0	
0.483	101.181	10.0	11:14: 0	
0.500	101.388	10.1	11:15: 0	
0.517	101.319	10.1	11:16: 0	
0.533	101.388	10.1	11:17: 0	
0.550	101.663	10.1	11:18: 0	
0.567	101.870	10.1	11:19: 0	
0.583	101.250	10.2	11:20: 0	
0.600	102.491	10.1	11:21: 0	
0.617	102.767	10.2	11:22: 0	
0.633	102.629	10.3	11:23: 0	
0.650	102.629	10.4	11:24: 0	
0.667	102.904	10.4	11:25: 0	
0.683	102.767	10.5	11:26: 0	
0.700	102.422	10.6	11:27: 0	
0.717	103.042	10.4	11:28: 0	
0.733	102.836	10.4	11:29: 0	
0.750	102.767	10.4	11:30: 0	
0.767	102.629	10.4	11:31: 0	
0.783	102.973	10.4	11:32: 0	
0.800	102.904	10.4	11:33: 0	
0.817	102.698	10.4	11:34: 0	

NORSK HYDRO A/S  
TROLL  
31/3-2OFFSHORE NORWAY  
21 APRIL 1984  
NR-XS-40061

D.S.T.4.POST GRAVELPACK TEST. MR-6 PROBE NO.288. SECOND FLOW.

DELTA TIME HOURS	ABS PRESSURE (BARS)	TEMP. DEG C	TIME	
0.833	103.111	10.3	11:35: 0	21/ 4/84
0.850	103.042	10.4	11:36: 0	
0.867	102.904	10.4	11:37: 0	
0.883	103.318	10.3	11:38: 0	
0.900	103.180	10.3	11:39: 0	
0.917	103.042	10.4	11:40: 0	
0.933	103.456	10.3	11:41: 0	
0.950	103.387	10.4	11:42: 0	
0.967	103.249	10.4	11:43: 0	
0.983	103.456	10.3	11:44: 0	
1.000	103.663	10.4	11:45: 0	
1.017	103.594	10.4	11:46: 0	
1.033	103.456	10.4	11:47: 0	
1.050	103.456	10.4	11:48: 0	
1.067	103.525	10.4	11:49: 0	
1.083	103.387	10.4	11:50: 0	
1.100	103.594	10.4	11:51: 0	
1.117	103.525	10.4	11:52: 0	
1.133	103.456	10.4	11:53: 0	
1.150	103.732	10.4	11:54: 0	
1.167	103.594	10.5	11:55: 0	
1.183	103.663	10.5	11:56: 0	
1.200	103.594	10.6	11:57: 0	
1.217	103.663	10.5	11:58: 0	
1.233	103.594	10.4	11:59: 0	
1.250	103.939	10.4	12: 0: 0	
1.267	103.732	10.5	12: 1: 0	
1.283	103.663	10.6	12: 2: 0	
1.300	103.663	10.6	12: 3: 0	
1.317	103.801	10.6	12: 4: 0	
1.333	103.732	10.6	12: 5: 0	
1.350	103.525	10.6	12: 6: 0	
1.367	103.801	10.6	12: 7: 0	
1.383	103.870	10.6	12: 8: 0	
1.400	103.663	10.6	12: 9: 0	
1.417	103.663	10.7	12:10: 0	
1.433	103.870	10.6	12:11: 0	
1.450	103.594	10.7	12:12: 0	
1.467	103.939	10.6	12:13: 0	
1.483	103.732	10.7	12:14: 0	
1.500	103.939	10.7	12:15: 0	
1.517	103.732	10.7	12:16: 0	
1.533	103.939	10.7	12:17: 0	
1.550	103.732	10.7	12:18: 0	
1.567	104.008	10.7	12:19: 0	
1.633	103.801	10.8	12:23: 0	
1.683	103.939	10.8	12:26: 0	
1.717	104.077	10.8	12:28: 0	
1.750	103.870	10.9	12:30: 0	
1.783	103.939	11.0	12:32: 0	

5/10/84

SPERRY-SUN INTERNATIONAL  
MR-SIX PRESSURE GAUGE REPORT

PAGE: 3

NORSK HYDRD A/S  
TROLL  
31/3-2

OFFSHORE NORWAY  
21 APRIL 1984  
NR-XS-40061

D.S.T.4.POST GRAVELPACK TEST. MR-6 PROBE NO.288. SECOND FLOW.

DELTA TIME HOURS	ABS PRESSURE (BARS)	TEMP. DEG C	TIME	
1.817	103.939	10.9	12:34: 0	21/ 4/84
1.850	104.077	11.0	12:36: 0	
1.883	104.146	11.1	12:38: 0	
1.917	104.008	11.1	12:40: 0	
1.950	104.077	11.1	12:42: 0	
1.983	104.077	11.1	12:44: 0	
2.083	104.077	11.2	12:50: 0	
2.167	104.215	11.0	12:55: 0	
2.250	104.008	11.1	13: 0: 0	
2.333	104.146	11.1	13: 5: 0	
2.417	104.352	11.2	13:10: 0	
2.500	104.146	11.2	13:15: 0	
2.583	104.283	11.2	13:20: 0	
2.667	104.559	11.2	13:25: 0	
2.750	104.215	11.2	13:30: 0	
2.833	104.421	11.2	13:35: 0	
2.917	104.421	11.3	13:40: 0	
3.000	104.697	11.2	13:45: 0	
3.083	104.559	11.2	13:50: 0	
3.167	104.628	11.2	13:55: 0	
3.250	104.490	11.1	14: 0: 0	
3.333	104.697	11.1	14: 5: 0	
3.417	104.697	11.1	14:10: 0	
3.500	104.697	11.1	14:15: 0	
3.583	104.766	11.2	14:20: 0	
3.667	104.490	11.3	14:25: 0	
3.750	104.766	11.3	14:30: 0	
3.833	104.628	11.2	14:35: 0	
3.917	104.697	11.2	14:40: 0	
4.000	104.904	11.2	14:45: 0	
4.083	104.628	11.3	14:50: 0	
4.167	105.042	11.3	14:55: 0	
4.250	104.904	11.2	15: 0: 0	
4.333	104.835	11.2	15: 5: 0	
4.417	104.973	11.2	15:10: 0	
4.500	104.835	11.2	15:15: 0	
4.583	104.835	11.2	15:20: 0	
4.667	105.042	11.2	15:25: 0	
4.733	104.904	11.2	15:29: 0	
4.833	104.835	11.3	15:35: 0	
4.917	105.111	11.3	15:40: 0	
5.000	104.973	11.3	15:45: 0	
5.083	105.111	11.3	15:50: 0	
5.167	105.180	11.3	15:55: 0	
5.250	105.111	11.4	16: 0: 0	
5.333	105.111	11.4	16: 5: 0	
5.417	104.973	11.5	16:10: 0	
5.500	105.180	11.6	16:15: 0	
5.583	105.180	11.6	16:20: 0	
5.667	105.180	11.6	16:25: 0	

5/10/84

SPERRY-SUN INTERNATIONAL  
MR-SIX PRESSURE GAUGE REPORT

PAGE: 4

NORSK HYDRO A/S  
TROLL  
31/3-2

OFFSHORE NORWAY  
21 APRIL 1984  
NR-XS-40061

D.S.T.4.POST GRAVELPACK TEST. MR-6 PROBE NO.288. SECOND FLOW.

DELTA TIME HOURS	ABS PRESSURE (BARS)	TEMP. DEG C	TIME
5.750	105.111	11.7	16:30: 0
5.833	105.111	11.7	16:35: 0
5.917	105.180	11.8	16:40: 0
6.000	105.111	11.8	16:45: 0
6.083	105.042	11.8	16:50: 0
6.167	105.180	11.8	16:55: 0
6.250	105.318	11.7	17: 0: 0
6.333	105.318	11.8	17: 5: 0
6.417	100.974	11.8	17:10: 0
6.450	100.216	11.7	17:12: 0
6.467	99.664	11.9	17:13: 0
6.483	99.250	12.1	17:14: 0
6.500	99.112	12.2	17:15: 0
6.517	98.699	12.3	17:16: 0
6.533	98.354	12.4	17:17: 0
6.550	98.009	12.6	17:18: 0
6.583	97.182	12.8	17:20: 0
6.600	97.113	12.8	17:21: 0
6.617	97.458	13.1	17:22: 0
6.633	97.389	13.2	17:23: 0
6.650	97.733	13.2	17:24: 0
6.667	98.009	13.4	17:25: 0
6.700	98.354	13.6	17:27: 0
6.733	98.492	13.7	17:29: 0
6.767	98.837	13.8	17:31: 0
6.800	99.043	13.8	17:33: 0
6.833	99.250	13.8	17:35: 0
6.867	99.388	13.9	17:37: 0
6.900	99.457	13.9	17:39: 0
6.933	99.388	13.9	17:41: 0
6.967	99.457	14.1	17:43: 0
7.000	99.388	14.2	17:45: 0
7.033	99.526	14.3	17:47: 0
7.067	99.457	14.3	17:49: 0
7.167	99.457	14.6	17:55: 0
7.250	99.595	14.5	18: 0: 0
7.333	99.733	14.4	18: 5: 0
7.417	99.940	14.4	18:10: 0
7.500	99.940	14.3	18:15: 0
7.583	100.009	14.5	18:20: 0
7.667	100.147	14.5	18:25: 0
7.750	100.147	14.6	18:30: 0
7.833	100.147	14.6	18:35: 0
7.917	100.767	14.7	18:40: 0
8.000	101.043	14.8	18:45: 0
8.083	100.353	14.8	18:50: 0
8.167	100.216	14.9	18:55: 0
8.250	99.733	15.2	19: 0: 0
8.333	98.285	15.4	19: 5: 0
8.417	100.836	15.8	19:10: 0

21/ 4/84

INCREASE TO 36/64"  
ADJ. CHOKE.

CHANGE TO 36/64"  
FIXED CHOKE.

5/10/84

SPERRY-SUN INTERNATIONAL  
MR-SIX PRESSURE GAUGE REPORT

PAGE: 5

NORSK HYDRO A/S  
TROLL  
31/3-2

OFFSHORE NORWAY  
21 APRIL 1984  
NR-XS-40061

D.S.T.4.POST GRAVELPACK TEST. MR-6 PROBE NO.288. SECOND FLOW.

DELTA TIME HOURS	ABS PRESSURE (BARS)	TEMP. DEG C	TIME	
8.500	99.388	16.1	19:15: 0	21/ 4/84
8.583	98.561	16.4	19:20: 0	
8.667	100.284	16.7	19:25: 0	
8.750	100.491	17.0	19:30: 0	
8.833	100.560	17.2	19:35: 0	
8.917	100.560	17.3	19:40: 0	
9.000	100.147	17.5	19:45: 0	
9.083	99.664	17.6	19:50: 0	
9.167	99.664	17.7	19:55: 0	
9.250	98.974	17.7	20: 0: 0	
9.333	99.664	17.7	20: 5: 0	
9.417	99.802	17.7	20:10: 0	
9.500	100.629	17.6	20:15: 0	
9.583	102.973	17.5	20:20: 0	
9.667	100.698	17.4	20:25: 0	
9.750	100.353	17.3	20:30: 0	
9.833	99.319	17.4	20:35: 0	
9.917	98.561	17.4	20:40: 0	
10.000	98.078	17.4	20:45: 0	
10.083	97.458	17.3	20:50: 0	
10.167	98.423	17.5	20:55: 0	
10.250	98.147	17.6	21: 0: 0	
10.333	97.664	17.7	21: 5: 0	
10.417	95.320	18.2	21:10: 0	
10.500	92.493	18.9	21:15: 0	
10.583	93.734	19.3	21:20: 0	
10.667	93.597	19.5	21:25: 0	
10.750	93.183	19.2	21:30: 0	
10.833	92.769	19.2	21:35: 0	
10.917	92.907	19.0	21:40: 0	
11.000	91.804	19.1	21:45: 0	
11.083	95.320	19.1	21:50: 0	
11.167	94.217	19.3	21:55: 0	
11.250	93.803	19.5	22: 0: 0	
11.333	93.390	19.7	22: 5: 0	
11.417	93.321	19.9	22:10: 0	
11.500	94.562	20.2	22:15: 0	
11.583	96.837	20.3	22:20: 0	
11.667	96.079	20.4	22:25: 0	
11.750	96.699	20.4	22:30: 0	
11.833	95.941	20.4	22:35: 0	
11.917	95.665	20.4	22:40: 0	
12.000	97.251	19.9	22:45: 0	
12.083	95.389	19.6	22:50: 0	
12.167	94.631	19.6	22:55: 0	
12.250	93.183	19.8	23: 0: 0	
12.333	92.493	20.3	23: 5: 0	
12.417	94.148	19.9	23:10: 0	
12.500	98.906	20.0	23:15: 0	
12.583	98.492	20.1	23:20: 0	

INCREASE TO 44/64"  
FIXED CHOKE.

5/10/84

SPERRY-SUN INTERNATIONAL  
MR-SIX PRESSURE GAUGE REPORT

PAGE: 6

NORSK HYDRO A/S  
TROLL  
31/3-2

OFFSHORE NORWAY  
21 APRIL 1984  
NR-XS-40061

D.S.T.4.POST GRAVELPACK TEST. MR-6 PROBE NO.288. SECOND FLOW.

DELTA TIME HOURS	ABS PRESSURE (BARS)	TEMP. DEG C	TIME	
12.667	120.900	20.2	23:25: 0	21/ 4/84
12.750	115.660	20.2	23:30: 0	
12.833	77.256	20.3	23:35: 0	
12.917	76.842	20.1	23:40: 0	
13.000	76.429	20.0	23:45: 0	
13.083	75.808	19.9	23:50: 0	
13.167	75.670	19.8	23:55: 0	
13.250	75.601	19.7	0: 0: 0	22/ 4/84
13.333	75.188	19.8	0: 5: 0	
13.417	74.843	20.3	0:10: 0	
13.500	74.015	20.6	0:15: 0	
13.583	74.222	20.7	0:20: 0	
13.667	74.015	20.9	0:25: 0	
13.750	73.740	20.8	0:30: 0	
13.833	73.464	20.8	0:35: 0	
13.917	73.119	21.0	0:40: 0	
14.000	72.223	21.0	0:45: 0	
14.083	72.016	21.0	0:50: 0	
14.167	71.533	21.0	0:55: 0	
14.250	71.740	20.7	1: 0: 0	
14.333	71.120	20.4	1: 5: 0	
14.417	69.534	21.3	1:10: 0	
14.500	66.431	22.2	1:15: 0	
14.583	66.362	22.2	1:20: 0	
14.667	66.155	22.2	1:25: 0	
14.750	65.742	22.1	1:30: 0	
14.833	65.811	22.4	1:35: 0	
14.917	64.501	22.6	1:40: 0	
15.000	65.466	22.5	1:45: 0	
15.083	65.259	22.3	1:50: 0	
15.167	65.190	22.3	1:55: 0	
15.250	64.983	22.3	2: 0: 0	
15.333	64.983	22.3	2: 5: 0	
15.417	64.983	22.5	2:10: 0	
15.500	64.914	22.8	2:15: 0	
15.583	64.708	22.9	2:20: 0	
15.667	64.570	22.9	2:25: 0	
15.750	64.225	22.9	2:30: 0	
15.833	63.673	22.8	2:35: 0	
15.917	64.087	22.9	2:40: 0	
16.000	63.742	22.9	2:45: 0	
16.083	63.673	22.9	2:50: 0	
16.167	63.673	23.0	2:55: 0	
16.250	63.604	23.0	3: 0: 0	
16.333	63.535	22.9	3: 5: 0	
16.417	63.398	23.0	3:10: 0	
16.500	63.398	23.1	3:15: 0	
16.583	63.329	22.9	3:20: 0	
16.667	63.329	23.1	3:25: 0	
16.750	63.329	23.1	3:30: 0	

INCREASE TO 56/64"  
FIXED CHOKE  
AT 01:09.

5/10/84

SPERRY-SUN INTERNATIONAL  
MR-SIX PRESSURE GAUGE REPORT

PAGE: 7

NORSK HYDRO A/S  
TROLL  
31/3-2

OFFSHORE NORWAY  
21 APRIL 1984  
NR-XS-40061

D.S.T.4.POST GRAVELPACK TEST. MR-6 PROBE NO.288. SECOND FLOW.

DELTA TIME HOURS	ABS PRESSURE (BARS)	TEMP. DEG C	TIME	
16.833	63.398	23.0	3:35: 0	22/ 4/84
16.917	62.984	22.6	3:40: 0	
17.000	62.294	21.9	3:45: 0	
17.083	61.881	21.7	3:50: 0	
17.167	61.743	21.7	3:55: 0	
17.250	61.674	22.2	4: 0: 0	
17.333	61.605	22.3	4: 5: 0	
17.417	61.812	22.6	4:10: 0	
17.500	61.881	22.6	4:15: 0	
17.583	61.605	22.5	4:20: 0	
17.667	61.536	22.5	4:25: 0	
17.750	61.467	22.4	4:30: 0	
17.833	61.467	22.4	4:35: 0	
17.917	61.536	22.6	4:40: 0	
18.000	61.536	22.5	4:45: 0	
18.083	61.398	22.6	4:50: 0	
18.167	61.398	22.3	4:55: 0	
18.250	61.122	21.8	5: 0: 0	
18.333	60.915	21.5	5: 5: 0	
18.417	60.984	21.6	5:10: 0	
18.500	60.984	21.8	5:15: 0	
18.583	60.709	21.8	5:20: 0	
18.667	59.605	22.2	5:25: 0	
18.750	58.640	22.1	5:30: 0	
18.833	58.847	21.9	5:35: 0	
18.917	58.709	21.9	5:40: 0	
19.000	58.089	21.9	5:45: 0	
19.083	58.571	21.8	5:50: 0	
19.167	58.295	21.6	5:55: 0	
19.250	58.158	21.3	6: 0: 0	
19.333	58.089	21.3	6: 5: 0	
19.417	57.606	21.2	6:10: 0	
19.500	57.951	21.2	6:15: 0	
19.583	57.675	21.1	6:20: 0	
19.667	57.399	21.0	6:25: 0	
19.750	57.399	21.0	6:30: 0	
19.833	57.330	20.9	6:35: 0	
19.917	57.261	20.9	6:40: 0	
20.000	57.261	21.1	6:45: 0	
20.083	56.985	21.0	6:50: 0	
20.167	56.985	21.0	6:55: 0	
20.250	56.848	21.0	7: 0: 0	
20.333	56.710	21.1	7: 5: 0	
20.417	56.710	21.2	7:10: 0	
20.500	56.572	21.1	7:15: 0	
20.583	57.054	21.3	7:20: 0	
20.667	56.985	21.3	7:25: 0	
20.750	57.123	21.2	7:30: 0	
20.833	57.123	21.5	7:35: 0	
20.917	57.192	21.6	7:40: 0	

INCREASE TO 64/64"  
ADJ. CHOKE.  
CHANGE TO 64/64"  
FIXED CHOKE  
AT 05:28.

NORSK HYDRO A/S  
TROLL  
31/3-2OFFSHORE NORWAY  
21 APRIL 1984  
NR-XS-40061

D.S.T.4.POST GRAVELPACK TEST. MR-6 PROBE NO.288. SECOND FLOW.

DELTA TIME HOURS	ABS PRESSURE (BARS)	TEMP. DEG C	TIME	
21.000	57.123	21.5	7:45: 0	22/ 4/84
21.083	57.054	21.4	7:50: 0	
21.167	57.054	21.5	7:55: 0	
21.250	57.054	21.5	8: 0: 0	
21.333	57.054	21.5	8: 5: 0	
21.417	57.054	21.4	8:10: 0	
21.500	56.985	21.3	8:15: 0	
21.583	56.916	21.2	8:20: 0	
21.667	56.848	21.1	8:25: 0	
21.750	56.848	21.1	8:30: 0	
21.833	56.158	22.1	8:35: 0	
21.917	55.882	23.1	8:40: 0	
22.000	55.193	23.4	8:45: 0	
22.083	54.090	23.7	8:50: 0	
22.167	50.366	23.7	8:55: 0	
22.250	48.298	23.7	9: 0: 0	
22.333	47.609	23.6	9: 5: 0	
22.417	47.264	23.8	9:10: 0	
22.500	47.126	23.8	9:15: 0	
22.583	47.333	23.8	9:20: 0	
22.667	47.540	24.0	9:25: 0	
22.750	56.848	23.9	9:30: 0	
22.833	57.192	23.9	9:35: 0	
22.917	57.123	24.0	9:40: 0	
23.000	57.123	24.0	9:45: 0	
23.083	57.261	23.9	9:50: 0	
23.167	57.261	23.9	9:55: 0	
23.250	57.330	23.9	10: 0: 0	
23.333	57.468	23.7	10: 5: 0	
23.417	57.537	23.8	10:10: 0	
23.500	57.468	23.8	10:15: 0	
23.583	57.606	23.6	10:20: 0	
23.667	57.675	23.8	10:25: 0	
23.750	57.744	23.7	10:30: 0	
23.833	57.744	24.1	10:35: 0	
23.917	57.744	24.4	10:40: 0	
24.000	57.882	24.7	10:45: 0	
24.083	57.744	24.8	10:50: 0	
24.167	57.951	24.9	10:55: 0	
24.250	57.951	24.6	11: 0: 0	
24.333	58.020	24.6	11: 5: 0	
24.417	58.089	24.7	11:10: 0	
24.500	58.089	24.9	11:15: 0	
24.583	58.502	24.9	11:20: 0	
24.667	58.226	24.9	11:25: 0	
24.750	58.364	24.7	11:30: 0	
24.833	58.295	24.7	11:35: 0	
24.917	58.433	24.4	11:40: 0	
25.000	58.364	24.4	11:45: 0	
25.083	58.433	24.6	11:50: 0	

WELL FLOWING THROUGH  
OPEN BY-PASS VALVE.



5/10/84

SPERRY-SUN INTERNATIONAL  
MR-SIX PRESSURE GAUGE REPORT

PAGE: 9

NORSK HYDRO A/S  
TROLL  
31/3-2OFFSHORE NORWAY  
21 APRIL 1984  
NR-XS-40061

D.S.T.4.POST GRAVELPACK TEST. MR-6 PROBE NO.288. SECOND FLOW.

DELTA TIME HOURS	ABS PRESSURE (BARS)	TEMP. DEG C	TIME	
25.167	58.502	24.6	11:55: 0	22/ 4/84
25.250	58.571	24.6	12: 0: 0	
25.333	58.640	24.3	12: 5: 0	
25.417	58.571	23.9	12:10: 0	
25.500	58.640	23.8	12:15: 0	
25.583	58.640	23.5	12:20: 0	
25.667	58.778	23.4	12:25: 0	
25.750	58.847	23.5	12:30: 0	
25.833	58.985	23.4	12:35: 0	
25.917	58.778	23.4	12:40: 0	
26.000	59.054	23.6	12:45: 0	
26.083	58.985	23.5	12:50: 0	
26.167	59.054	23.4	12:55: 0	
26.250	59.054	23.3	13: 0: 0	
26.333	59.123	23.3	13: 5: 0	
26.417	59.192	23.3	13:10: 0	
26.500	59.261	23.2	13:15: 0	
26.583	59.399	23.1	13:20: 0	
26.667	59.330	23.3	13:25: 0	
26.750	59.330	23.4	13:30: 0	
26.833	59.399	23.3	13:35: 0	
26.917	59.399	23.2	13:40: 0	
27.000	59.330	23.3	13:45: 0	
27.083	59.468	23.4	13:50: 0	
27.167	59.468	23.6	13:55: 0	
27.250	59.536	23.6	14: 0: 0	
27.333	59.536	23.7	14: 5: 0	
27.417	59.674	23.9	14:10: 0	
27.500	59.468	23.9	14:15: 0	
27.583	59.743	24.1	14:20: 0	
27.667	59.812	23.9	14:25: 0	
27.750	59.743	23.8	14:30: 0	
27.833	59.812	23.8	14:35: 0	
27.917	59.743	23.8	14:40: 0	
28.000	59.812	23.6	14:45: 0	
28.083	59.950	23.7	14:50: 0	
28.167	60.019	23.8	14:55: 0	
28.250	59.950	23.8	15: 0: 0	
28.333	60.157	23.8	15: 5: 0	
28.417	60.088	24.0	15:10: 0	
28.500	60.226	24.1	15:15: 0	
28.583	60.364	24.1	15:20: 0	
28.667	60.295	24.2	15:25: 0	
28.750	60.364	24.3	15:30: 0	
28.833	60.433	24.3	15:35: 0	
28.917	60.364	24.1	15:40: 0	
29.000	60.433	24.3	15:45: 0	
29.083	60.433	24.3	15:50: 0	
29.167	60.364	24.3	15:55: 0	
29.250	60.295	24.6	16: 0: 0	

5/10/84

SPERRY-SUN INTERNATIONAL  
MR-SIX PRESSURE GAUGE REPORT

PAGE: 10

NORSK HYDRO A/S  
TROLL  
31/3-2OFFSHORE NORWAY  
21 APRIL 1984  
NR-XS-40061

D.S.T.4.POST GRAVELPACK TEST. MR-6 PROBE NO.288. SECOND FLOW.

DELTA TIME HOURS	ABS PRESSURE (BARS)	TEMP. DEG C	TIME	
29.333	60.433	24.4	16: 5: 0	22/ 4/84
29.417	60.433	24.2	16:10: 0	
29.500	60.433	24.4	16:15: 0	
29.583	60.502	24.8	16:20: 0	
29.667	60.640	24.5	16:25: 0	
29.750	60.571	24.7	16:30: 0	
29.833	60.502	24.3	16:35: 0	
29.917	60.502	23.9	16:40: 0	
30.000	60.571	23.5	16:45: 0	
30.083	60.571	23.4	16:50: 0	
30.167	60.640	23.3	16:55: 0	
30.250	60.709	23.2	17: 0: 0	
30.333	60.640	23.1	17: 5: 0	
30.417	60.640	23.0	17:10: 0	
30.500	60.778	22.9	17:15: 0	
30.583	60.778	22.9	17:20: 0	
30.667	60.846	22.7	17:25: 0	
30.750	60.846	22.8	17:30: 0	
30.833	60.846	23.0	17:35: 0	
30.917	60.915	23.4	17:40: 0	
31.000	60.984	23.4	17:45: 0	
31.083	61.053	23.2	17:50: 0	
31.167	61.053	22.9	17:55: 0	
31.250	61.329	22.9	18: 0: 0	
31.333	61.260	22.9	18: 5: 0	
31.417	61.191	22.8	18:10: 0	
31.500	61.191	22.7	18:15: 0	
31.583	61.260	22.8	18:20: 0	
31.667	61.398	22.7	18:25: 0	
31.750	61.398	22.6	18:30: 0	
31.833	61.329	22.4	18:35: 0	
31.917	61.743	22.3	18:40: 0	
32.000	61.398	22.3	18:45: 0	
32.083	60.984	22.3	18:50: 0	
32.167	61.329	22.2	18:55: 0	
32.250	61.605	22.4	19: 0: 0	
32.333	61.605	22.3	19: 5: 0	
32.417	61.122	22.3	19:10: 0	
32.500	61.398	22.3	19:15: 0	
32.583	61.674	22.2	19:20: 0	
32.667	60.433	22.4	19:25: 0	
32.750	62.846	22.3	19:30: 0	
32.833	62.156	22.3	19:35: 0	
32.917	62.294	22.4	19:40: 0	
33.000	62.501	22.4	19:45: 0	
33.083	58.985	22.3	19:50: 0	
33.167	63.191	22.4	19:55: 0	
33.250	62.915	22.5	20: 0: 0	
33.333	62.570	22.6	20: 5: 0	
33.417	60.226	22.4	20:10: 0	

NORSK HYDRD A/S  
TROLL  
31/3-2OFFSHORE NORWAY  
21 APRIL 1984  
NR-XS-40061

D.S.T.4.POST GRAVELPACK TEST. MR-6 PROBE NO.288. SECOND FLOW.

DELTA TIME HOURS	ABS PRESSURE (BARS)	TEMP. DEG C	TIME	
33.500	61.881	22.7	20:15: 0	22/ 4/84
33.583	61.536	22.2	20:20: 0	
33.667	62.639	21.6	20:25: 0	
33.750	62.846	21.5	20:30: 0	
33.833	60.295	21.7	20:35: 0	
33.917	61.674	21.6	20:40: 0	
34.000	62.501	21.8	20:45: 0	
34.083	62.915	22.0	20:50: 0	
34.167	62.708	22.1	20:55: 0	
34.250	62.708	22.3	21: 0: 0	
34.333	62.225	22.2	21: 5: 0	
34.417	62.088	22.1	21:10: 0	
34.500	64.225	22.3	21:15: 0	
34.583	64.156	22.3	21:20: 0	
34.667	63.880	22.3	21:25: 0	
34.750	63.880	22.2	21:30: 0	
34.833	63.673	22.3	21:35: 0	
34.917	62.156	22.0	21:40: 0	
35.000	66.776	22.2	21:45: 0	
35.083	97.389	21.6	21:50: 0	
35.167	97.044	21.1	21:55: 0	
35.250	97.182	20.7	22: 0: 0	
35.333	96.975	20.5	22: 5: 0	
35.417	96.699	20.2	22:10: 0	
35.500	96.975	20.1	22:15: 0	
35.583	96.975	19.8	22:20: 0	
35.667	96.975	19.6	22:25: 0	
35.750	97.113	19.4	22:30: 0	
35.833	96.630	19.4	22:35: 0	
35.917	96.906	19.5	22:40: 0	
36.000	96.768	19.4	22:45: 0	
36.083	96.492	19.4	22:50: 0	
36.167	96.423	19.5	22:55: 0	
36.250	96.906	19.5	23: 0: 0	
36.333	96.630	19.4	23: 5: 0	
36.417	96.423	19.4	23:10: 0	
36.500	1.069	17.2	23:15: 0	
36.583	1.069	16.1	23:20: 0	
36.667	119.038	16.3	23:25: 0	
36.750	98.630	14.6	23:30: 0	
36.833	94.631	17.0	23:35: 0	
36.917	95.320	18.6	23:40: 0	
37.000	95.596	19.3	23:45: 0	
37.083	95.527	19.7	23:50: 0	
37.167	95.872	20.1	23:55: 0	
37.250	95.803	19.7	0: 0: 0	23/ 4/84
37.333	96.079	19.4	0: 5: 0	
37.417	96.286	19.0	0:10: 0	
37.500	96.217	19.0	0:15: 0	
37.583	96.148	19.0	0:20: 0	

DECREASE TO 56/64"  
FIXED CHOKE.WELL SHUT-IN AT  
SURFACE TREEWELL OPENED TO FLOW  
ON 56/64" FIXED CHOKE.

NORSK HYDRO A/S  
TROLL  
31/3-2OFFSHORE NORWAY  
21 APRIL 1984  
NR-XS-40061

D.S.T.4.POST GRAVELPACK TEST. MR-6 PROBE NO.288. SECOND FLOW.

DELTA TIME HOURS	ABS PRESSURE (BARS)	TEMP. DEG C	TIME	
37.667	96.148	19.0	0:25: 0	23/ 4/84
37.750	96.286	19.0	0:30: 0	
37.833	96.010	19.3	0:35: 0	
37.917	95.941	19.4	0:40: 0	
38.000	96.010	19.4	0:45: 0	
38.083	95.941	19.4	0:50: 0	
38.167	96.148	19.3	0:55: 0	
38.250	95.941	19.4	1: 0: 0	
38.333	96.010	19.7	1: 5: 0	
38.417	95.803	19.7	1:10: 0	
38.500	96.010	19.7	1:15: 0	
38.583	95.803	19.6	1:20: 0	
38.667	95.803	19.7	1:25: 0	
38.750	95.941	19.8	1:30: 0	
38.833	95.941	20.0	1:35: 0	
38.917	95.872	20.1	1:40: 0	
39.000	95.803	20.1	1:45: 0	
39.083	95.872	20.2	1:50: 0	
39.167	95.803	20.1	1:55: 0	
39.250	95.734	20.3	2: 0: 0	
39.333	95.734	20.1	2: 5: 0	
39.417	96.079	20.1	2:10: 0	
39.500	95.734	20.1	2:15: 0	
39.583	96.010	19.7	2:20: 0	
39.667	95.941	19.8	2:25: 0	
39.750	96.010	19.9	2:30: 0	
39.833	96.010	20.1	2:35: 0	
39.917	95.872	20.1	2:40: 0	
40.000	95.941	20.3	2:45: 0	
40.083	95.941	20.3	2:50: 0	
40.167	96.148	20.2	2:55: 0	
40.250	95.872	20.2	3: 0: 0	
40.333	96.079	20.3	3: 5: 0	
40.417	96.010	20.3	3:10: 0	
40.500	95.803	20.3	3:15: 0	
40.583	95.941	20.3	3:20: 0	
40.667	96.079	20.3	3:25: 0	
40.750	96.010	20.4	3:30: 0	
40.833	116.625	22.0	3:35: 0	
40.917	118.211	21.9	3:40: 0	
41.000	119.797	20.9	3:45: 0	
41.083	118.693	19.7	3:50: 0	
41.167	116.832	16.1	3:55: 0	
41.250	116.556	14.4	4: 0: 0	
41.333	116.487	13.5	4: 5: 0	
41.417	116.349	12.8	4:10: 0	
41.500	115.246	12.2	4:15: 0	
41.583	115.108	11.8	4:20: 0	
41.667	114.970	11.6	4:25: 0	
41.750	114.488	11.5	4:30: 0	

DECREASE TO 26/64"  
FIXED CHOKE.

NORSK HYDRO A/S  
TROLL  
31/3-2OFFSHORE NORWAY  
21 APRIL 1984  
NR-XS-40061

D.S.T.4.POST GRAVELPACK TEST. MR-6 PROBE NO.288. SECOND FLOW.

DELTA TIME HOURS	ABS PRESSURE (BARS)	TEMP. DEG C	TIME	
41.833	114.832	11.3	4:35: 0	23/ 4/84
41.917	115.522	11.3	4:40: 0	
42.000	114.350	11.4	4:45: 0	
42.083	115.522	11.8	4:50: 0	
42.167	118.142	12.3	4:55: 0	
42.250	116.211	11.6	5: 0: 0	
42.333	116.142	11.6	5: 5: 0	
42.417	117.728	12.1	5:10: 0	
42.500	116.418	11.3	5:15: 0	
42.583	114.901	11.2	5:20: 0	
42.667	115.936	10.6	5:25: 0	
42.750	116.005	10.2	5:30: 0	
42.833	117.728	10.3	5:35: 0	
42.917	116.005	10.3	5:40: 0	
43.000	116.005	9.7	5:45: 0	
43.083	116.005	9.3	5:50: 0	
43.167	115.936	9.1	5:55: 0	
43.250	116.211	8.8	6: 0: 0	
43.333	115.798	8.9	6: 5: 0	
43.417	116.005	8.4	6:10: 0	
43.500	115.729	8.3	6:15: 0	
43.583	115.522	8.2	6:20: 0	
43.667	115.591	8.2	6:25: 0	
43.750	115.729	8.1	6:30: 0	
43.833	115.591	8.2	6:35: 0	
43.917	115.729	8.1	6:40: 0	
44.000	116.487	8.2	6:45: 0	
44.083	115.660	8.3	6:50: 0	
44.167	115.177	8.3	6:55: 0	
44.250	114.970	8.0	7: 0: 0	
44.333	115.798	7.6	7: 5: 0	
44.417	115.039	7.7	7:10: 0	
44.500	116.005	8.0	7:15: 0	
44.583	115.384	7.9	7:20: 0	
44.667	115.453	7.9	7:25: 0	
44.750	115.453	7.9	7:30: 0	
44.833	115.591	8.0	7:35: 0	
44.917	115.591	8.1	7:40: 0	
45.000	115.039	8.0	7:45: 0	
45.083	115.591	8.1	7:50: 0	
45.167	115.177	8.0	7:55: 0	
45.250	115.384	8.2	8: 0: 0	

END OF FLOW PERIOD.

5/10/84

SPERRY-SUN INTERNATIONAL  
MR-SIX PRESSURE GAUGE REPORT

PAGE: 1

NORSK HYDRO A/S  
TROLL  
31/3-2

OFFSHORE NORWAY  
23 APRIL 1984  
NR-XS-40061

D.S.T.4.POST GRAVELPACK TEST. MR-6 PROBE NO.288. SECOND BUILD-UP.

DELTA TIME HOURS	ABS PRESSURE (BARS)	TEMP. DEG C	TIME	
0.000	115.384	8.2	8: 0: 0	23/ 4/84 WELL SHUT-IN AT
0.250	113.522	7.8	8:15: 0	PCT VALVE AND
0.500	114.488	7.4	8:30: 0	CHOKE MANIFOLD.
0.750	115.246	6.8	8:45: 0	
1.000	115.591	6.7	9: 0: 0	
1.250	115.660	6.6	9:15: 0	
1.500	115.867	6.1	9:30: 0	
1.750	115.936	6.1	9:45: 0	
2.000	116.005	6.1	10: 0: 0	
2.250	116.073	5.9	10:15: 0	
2.500	116.142	5.9	10:30: 0	
2.750	116.142	5.9	10:45: 0	
3.000	116.142	6.0	11: 0: 0	
3.250	116.211	6.4	11:15: 0	
3.500	116.280	6.7	11:30: 0	
3.750	116.211	6.6	11:45: 0	

END OF TEST.

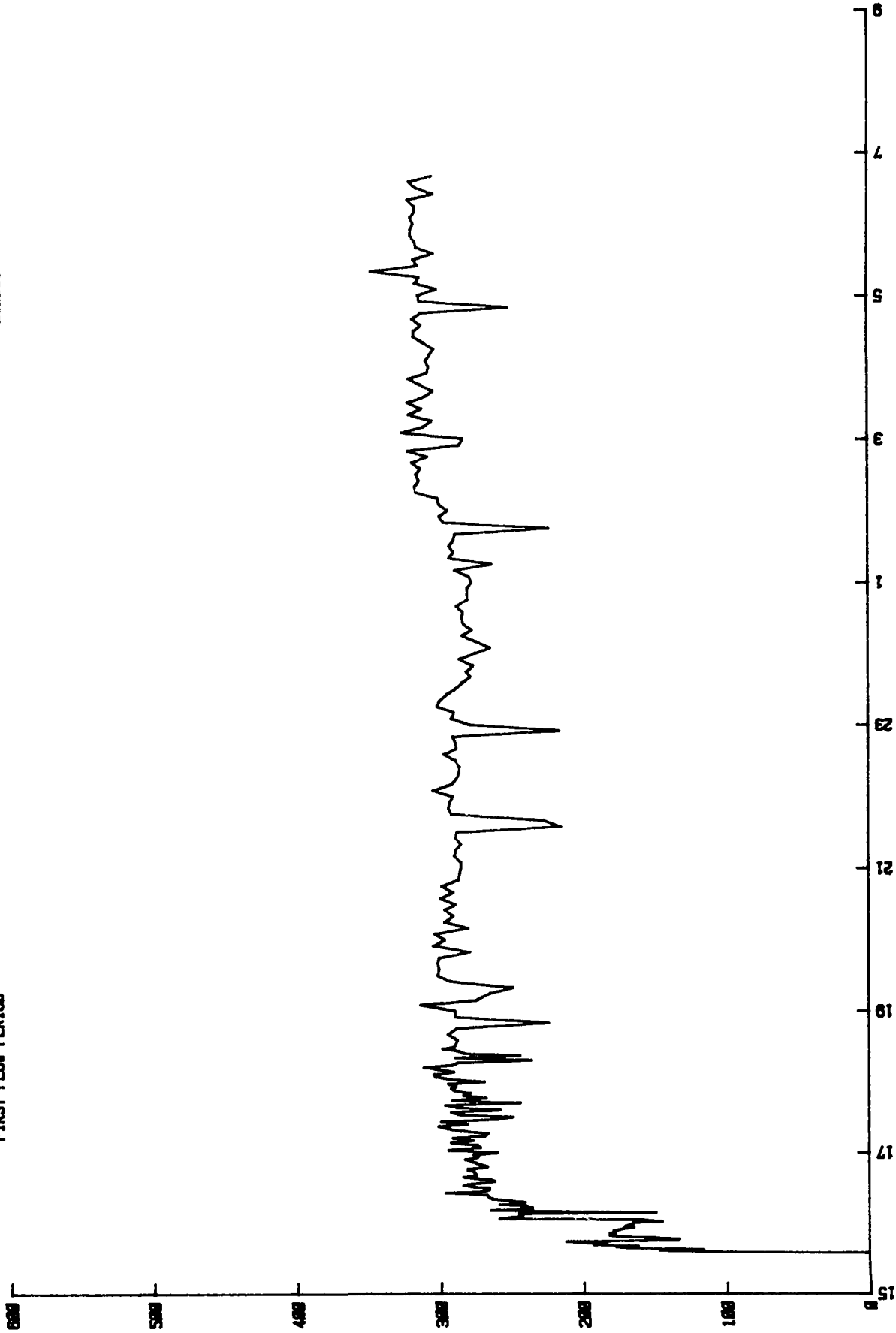
MR-SIX Probe No. 8

Sensor Point : Downstream Choke

NORSK HYDRO A/S  
31/3-2  
TROLL  
FIRST FLOW PERIOD

# NL Sperry-Sun, Inc. PRESSURE/TEMP. Vs TIME PLOT

28 APRIL 1984  
DOWNSTREAM CHOICE  
MR-8 PROBE NO. 8  
D80851



PRESSURE  
Scale 1 inch = 100 PSIG

REAL TIME  
Scale 1 inch = 2 hours



4/29/84

SPERRY-SUN INTERNATIONAL  
MR-SIX PRESSURE GAUGE REPORT

PAGE: 1

NORSK HYDRO A/S  
TROLL  
31/3-2

OFFSHORE NORWAY  
20 APRIL 1984  
NR-XS-40061

D.S.T.4.POST GRAVELPACK TEST. MR-6 PROBE NO.8. FIRST FLOW.

DELTA TIME HOURS	ABS PRESSURE (BARS)	TIME
0.000	1.150	15:35: 0
0.017	8.666	15:36: 0
0.033	11.148	15:37: 0
0.050	9.010	15:38: 0
0.067	12.665	15:39: 0
0.083	13.216	15:40: 0
0.100	12.182	15:41: 0
0.117	14.320	15:42: 0
0.133	13.699	15:43: 0
0.150	15.078	15:44: 0
0.167	15.630	15:45: 0
0.183	10.251	15:46: 0
0.200	10.182	15:47: 0
0.217	11.424	15:48: 0
0.233	13.216	15:49: 0
0.250	13.561	15:50: 0
0.267	13.285	15:51: 0
0.283	13.561	15:52: 0
0.300	13.285	15:53: 0
0.317	13.354	15:54: 0
0.333	13.078	15:55: 0
0.350	12.872	15:56: 0
0.367	12.389	15:57: 0
0.383	12.803	15:58: 0
0.400	12.596	15:59: 0
0.417	12.458	16: 0: 0
0.433	12.389	16: 1: 0
0.450	11.010	16: 2: 0
0.467	11.975	16: 3: 0
0.483	18.870	16: 4: 0
0.500	18.250	16: 5: 0
0.517	17.767	16: 6: 0
0.533	17.905	16: 7: 0
0.550	17.905	16: 8: 0
0.567	11.286	16: 9: 0
0.583	15.561	16:10: 0
0.600	19.284	16:11: 0
0.617	17.836	16:12: 0
0.633	17.284	16:13: 0
0.650	17.698	16:14: 0
0.667	17.560	16:15: 0
0.683	18.870	16:16: 0
0.700	18.112	16:17: 0
0.717	17.629	16:18: 0
0.733	18.250	16:19: 0
0.750	18.801	16:20: 0
0.767	19.215	16:21: 0
0.783	19.353	16:22: 0
0.800	19.422	16:23: 0
0.817	19.491	16:24: 0

20/ 4/84 WELL OPENED TO FLOW  
ON 24/64" ADJ.CHOKE.

NORSK HYDRO A/S  
TROLL  
31/3-2OFFSHORE NORWAY  
20 APRIL 1984  
NR-XS-40061

D.S.T.4.POST GRAVELPACK TEST. MR-6 PROBE NO.8. FIRST FLOW.

DELTA TIME HOURS	ABS PRESSURE (BARS)	TIME	
0.833	20.318	16:25: 0	20/ 4/84
0.850	21.490	16:26: 0	
0.867	19.836	16:27: 0	
0.883	19.353	16:28: 0	
0.900	19.353	16:29: 0	
0.917	19.353	16:30: 0	
0.933	20.111	16:31: 0	
0.950	20.594	16:32: 0	
0.967	20.387	16:33: 0	
0.983	19.836	16:34: 0	
1.000	19.353	16:35: 0	
1.017	19.077	16:36: 0	
1.033	19.284	16:37: 0	
1.050	20.042	16:38: 0	
1.067	20.594	16:39: 0	
1.083	20.111	16:40: 0	
1.100	19.974	16:41: 0	
1.117	20.042	16:42: 0	
1.133	20.042	16:43: 0	
1.150	20.111	16:44: 0	
1.167	20.387	16:45: 0	
1.183	20.387	16:46: 0	
1.200	19.767	16:47: 0	
1.217	19.422	16:48: 0	
1.233	19.629	16:49: 0	
1.250	19.836	16:50: 0	
1.267	19.974	16:51: 0	
1.317	20.525	16:54: 0	
1.350	19.905	16:56: 0	
1.383	20.111	16:58: 0	
1.417	18.939	17: 0: 0	
1.450	21.353	17: 2: 0	
1.483	19.767	17: 4: 0	
1.517	19.905	17: 6: 0	
1.550	21.215	17: 8: 0	
1.583	20.111	17:10: 0	
1.617	21.146	17:12: 0	
1.650	19.560	17:14: 0	
1.683	19.422	17:16: 0	
1.717	20.732	17:18: 0	
1.750	21.421	17:20: 0	
1.783	21.835	17:22: 0	
1.817	20.387	17:24: 0	
1.850	21.697	17:26: 0	
1.883	19.146	17:28: 0	
1.917	18.181	17:30: 0	
1.950	20.801	17:32: 0	
1.983	21.215	17:34: 0	
2.017	18.801	17:36: 0	
2.050	20.939	17:38: 0	

4/29/84

SPERRY-SUN INTERNATIONAL  
MR-SIX PRESSURE GAUGE REPORT

PAGE: 3

NORSK HYDRO A/S  
TROLL  
31/3-2

OFFSHORE NORWAY  
20 APRIL 1984  
NR-XS-40061

D.S.T.4.POST GRAVELPACK TEST. MR-6 PROBE NO.8. FIRST FLOW.

DELTA TIME HOURS	ABS PRESSURE (BARS)	TIME	
2.083	21.490	17:40: 0	20/ 4/84
2.117	17.836	17:42: 0	
2.150	21.146	17:44: 0	
2.183	19.491	17:46: 0	
2.217	20.594	17:48: 0	
2.250	20.249	17:50: 0	
2.283	21.008	17:52: 0	
2.317	21.215	17:54: 0	
2.350	20.939	17:56: 0	
2.383	21.353	17:58: 0	
2.417	19.560	18: 0: 0	
2.450	21.215	18: 2: 0	
2.483	21.973	18: 4: 0	
2.517	22.042	18: 6: 0	
2.550	21.077	18: 8: 0	
2.583	21.697	18:10: 0	
2.617	22.525	18:12: 0	
2.650	21.146	18:14: 0	
2.683	20.870	18:16: 0	
2.717	17.284	18:18: 0	
2.750	21.008	18:20: 0	
2.783	17.836	18:22: 0	
2.817	20.594	18:24: 0	
2.850	20.801	18:26: 0	
2.883	21.628	18:28: 0	
2.900	21.077	18:29: 0	
3.000	20.870	18:35: 0	
3.083	21.353	18:40: 0	
3.167	20.939	18:45: 0	
3.250	16.457	18:50: 0	
3.333	21.008	18:55: 0	
3.417	21.008	19: 0: 0	
3.500	22.663	19: 5: 0	
3.567	19.974	19: 9: 0	
3.667	19.284	19:15: 0	
3.750	18.181	19:20: 0	
3.833	21.215	19:25: 0	
3.917	21.835	19:30: 0	
4.000	21.766	19:35: 0	
4.083	21.835	19:40: 0	
4.167	21.766	19:45: 0	
4.250	20.249	19:50: 0	
4.333	22.042	19:55: 0	
4.417	21.490	20: 0: 0	
4.500	21.973	20: 5: 0	
4.583	20.318	20:10: 0	
4.667	21.490	20:15: 0	
4.750	21.077	20:20: 0	
4.833	21.490	20:25: 0	
4.917	20.939	20:30: 0	

4/29/84

SPERRY-SUN INTERNATIONAL  
MR-SIX PRESSURE GAUGE REPORT

PAGE: 4

NORSK HYDRO A/S  
TROLL  
31/3-2

OFFSHORE NORWAY  
20 APRIL 1984  
NR-XS-40061

D.S.T.4.POST GRAVELPACK TEST. MR-6 PROBE NO.8. FIRST FLOW.

DELTA TIME HOURS	ABS PRESSURE (BARS)	TIME	
5.000	21.697	20:35: 0	20/ 4/84
5.083	21.077	20:40: 0	
5.167	21.628	20:45: 0	
5.250	20.801	20:50: 0	
5.333	20.732	20:55: 0	
5.417	20.663	21: 0: 0	
5.500	20.663	21: 5: 0	
5.583	21.008	21:10: 0	
5.667	20.939	21:15: 0	
5.750	20.663	21:20: 0	
5.833	20.939	21:25: 0	
5.917	20.870	21:30: 0	
6.000	15.836	21:35: 0	
6.083	16.664	21:40: 0	
6.167	21.146	21:45: 0	
6.250	21.284	21:50: 0	
6.333	21.215	21:55: 0	
6.417	21.077	22: 0: 0	
6.500	22.042	22: 5: 0	
6.583	21.146	22:10: 0	
6.667	20.870	22:15: 0	
6.750	20.732	22:20: 0	
6.833	20.732	22:25: 0	
6.917	20.939	22:30: 0	
7.000	21.490	22:35: 0	
7.083	20.870	22:40: 0	
7.167	20.939	22:45: 0	
7.250	21.077	22:50: 0	
7.333	15.905	22:55: 0	
7.417	20.249	23: 0: 0	
7.500	21.146	23: 5: 0	
7.583	21.008	23:10: 0	
7.667	21.835	23:15: 0	
7.750	21.697	23:20: 0	
7.833	21.353	23:25: 0	
7.917	20.939	23:30: 0	
8.000	20.594	23:35: 0	
8.083	20.180	23:40: 0	
8.167	20.387	23:45: 0	
8.250	20.042	23:50: 0	
8.333	20.732	23:55: 0	
8.417	19.974	0: 0: 0	21/ 4/84
8.500	19.215	0: 5: 0	
8.583	19.905	0:10: 0	
8.667	20.594	0:15: 0	
8.750	20.111	0:20: 0	
8.833	20.525	0:25: 0	
8.917	20.594	0:30: 0	
9.000	20.525	0:35: 0	
9.083	20.870	0:40: 0	

4/29/84

SPERRY-SUN INTERNATIONAL  
MR-SIX PRESSURE GAUGE REPORT

PAGE: 5

NORSK HYDRO A/S  
TROLL  
31/3-2

OFFSHORE NORWAY  
20 APRIL 1984  
NR-XS-40061

D.S.T.4.POST GRAVELPACK TEST. MR-6 PROBE NO.8. FIRST FLOW.

DELTA TIME HOURS	ABS PRESSURE (BARS)	TIME	
9.167	20.318	0:45: 0	21/ 4/84
9.250	20.318	0:50: 0	
9.333	20.318	0:55: 0	
9.417	20.111	1: 0: 0	
9.500	20.249	1: 5: 0	
9.583	20.939	1:10: 0	
9.667	19.146	1:15: 0	
9.750	21.215	1:20: 0	
9.833	21.008	1:25: 0	
9.917	21.215	1:30: 0	
10.000	21.008	1:35: 0	
10.083	20.939	1:40: 0	
10.167	16.388	1:45: 0	
10.250	21.490	1:50: 0	
10.333	21.697	1:55: 0	
10.417	21.284	2: 0: 0	
10.500	21.697	2: 5: 0	
10.583	21.766	2:10: 0	
10.667	22.801	2:15: 0	
10.750	22.869	2:20: 0	
10.833	22.663	2:25: 0	
10.917	22.801	2:30: 0	
11.000	22.594	2:35: 0	
11.083	23.007	2:40: 0	
11.167	22.249	2:45: 0	
11.250	23.214	2:50: 0	
11.333	20.663	2:55: 0	
11.417	20.525	3: 0: 0	
11.500	23.490	3: 5: 0	
11.583	22.456	3:10: 0	
11.667	22.042	3:15: 0	
11.750	23.145	3:20: 0	
11.833	22.525	3:25: 0	
11.917	23.214	3:30: 0	
12.000	22.387	3:35: 0	
12.083	21.973	3:40: 0	
12.167	22.594	3:45: 0	
12.250	23.145	3:50: 0	
12.333	22.249	3:55: 0	
12.417	22.180	4: 0: 0	
12.500	22.318	4: 5: 0	
12.583	22.111	4:10: 0	
12.667	21.904	4:15: 0	
12.750	22.387	4:20: 0	
12.833	22.869	4:25: 0	
12.917	22.869	4:30: 0	
13.000	22.525	4:35: 0	
13.083	22.938	4:40: 0	
13.167	22.525	4:45: 0	
13.250	18.319	4:50: 0	

4/29/84

SPERRY-SUN INTERNATIONAL  
MR-SIX PRESSURE GAUGE REPORT

PAGE: 6

NORSK HYDRO A/S  
TROLL  
31/3-2

OFFSHORE NORWAY  
20 APRIL 1984  
NR-XS-40061

D.S.T.4.POST GRAVELPACK TEST. MR-6 PROBE NO.8. FIRST FLOW.

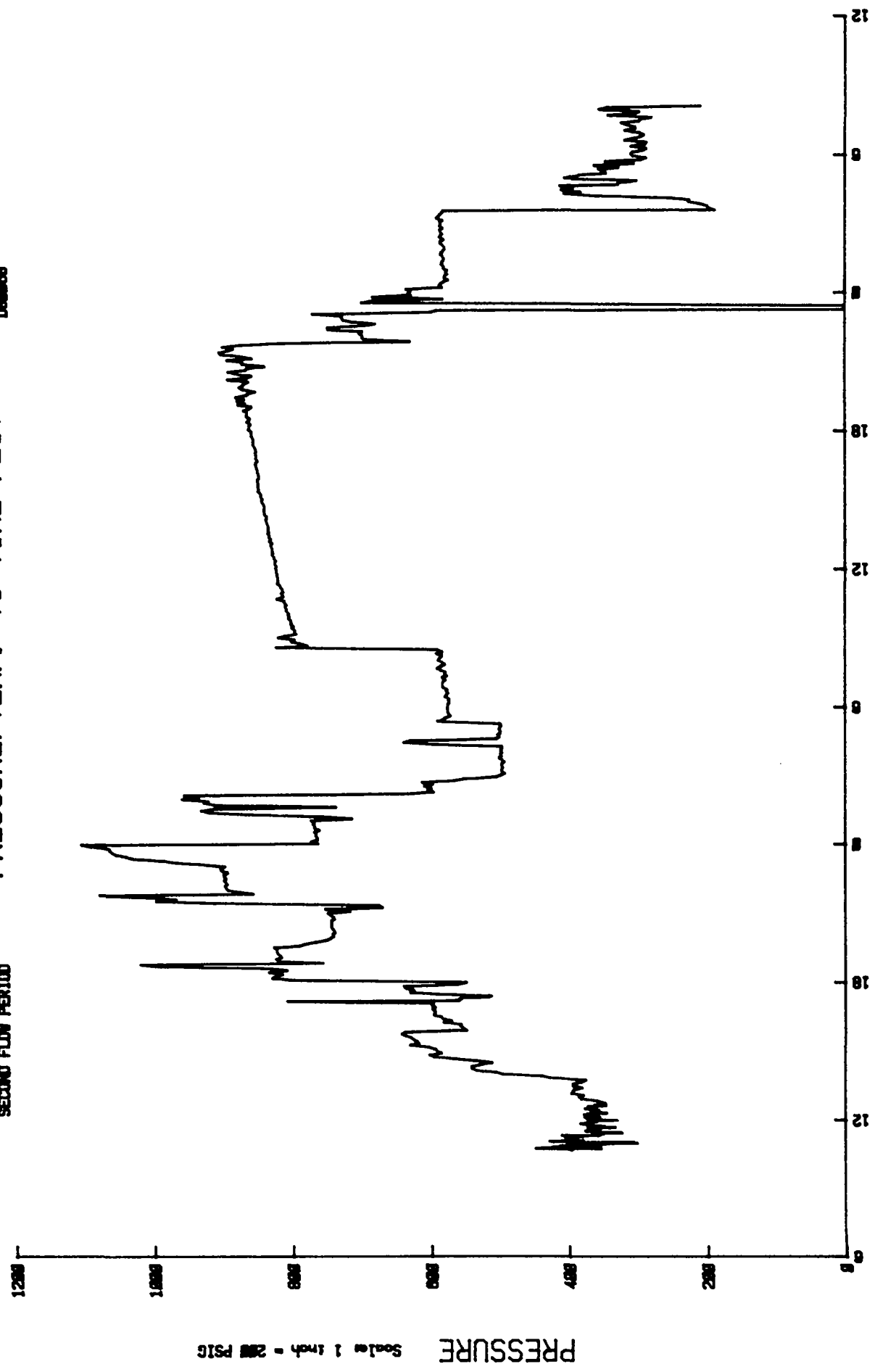
DELTA TIME HOURS	ABS PRESSURE (BARS)	TIME	
13.333	22.594	4:55: 0	21/ 4/84
13.417	22.663	5: 0: 0	
13.500	21.766	5: 5: 0	
13.583	22.801	5:10: 0	
13.667	22.594	5:15: 0	
13.750	24.938	5:20: 0	
13.833	22.663	5:25: 0	
13.917	22.869	5:30: 0	
14.000	21.904	5:35: 0	
14.083	22.732	5:40: 0	
14.167	22.801	5:45: 0	
14.250	23.007	5:50: 0	
14.333	23.007	5:55: 0	
14.417	22.869	6: 0: 0	
14.500	23.007	6: 5: 0	
14.583	22.801	6:10: 0	
14.667	22.801	6:15: 0	
14.750	23.145	6:20: 0	
14.833	21.904	6:25: 0	
14.917	22.732	6:30: 0	
15.000	23.076	6:35: 0	
15.083	21.973	6:40: 0	END OF FLOW.

21 APRIL 1984  
DOWNSTREAM CHOKE  
MR-6 PROBE INL 8  
D888808

# NL Sperry-Sun, Inc.

## PRESSURE/TEMP. Vs TIME PLOT

NORSK HYDRO A/S  
31/3-2  
TROLL  
SECOND FLOW PERIOD



REAL TIME  
Scale 1 inch = 8 hours

4/29/84

SPERRY-SUN INTERNATIONAL  
MR-SIX PRESSURE GAUGE REPORT

PAGE: 1

NORSK HYDRO A/S  
TROLL  
31/3-2

OFFSHORE NORWAY  
21 APRIL 1984  
NR-XS-40061

D.S.T.4. POST GRAVELPACK TEST. MR-6 PROBE NO.8. SECOND FLOW.

DELTA TIME HOURS	ABS PRESSURE (BARS)	TIME	
0.000	31.339	10:45: 0	21/ 4/84 WELL OPENED TO FLOW
0.017	25.409	10:46: 0	ON 28/64" ADJ. CHOKE.
0.033	31.339	10:47: 0	
0.050	29.546	10:48: 0	
0.067	30.166	10:49: 0	
0.083	29.132	10:50: 0	
0.100	29.477	10:51: 0	
0.117	29.201	10:52: 0	
0.133	28.581	10:53: 0	
0.150	25.409	10:54: 0	
0.167	28.787	10:55: 0	
0.183	26.650	10:56: 0	
0.200	25.891	10:57: 0	
0.217	24.995	10:58: 0	
0.233	24.306	10:59: 0	
0.250	21.823	11: 0: 0	
0.267	26.305	11: 1: 0	
0.283	22.099	11: 2: 0	
0.300	30.166	11: 3: 0	
0.317	30.580	11: 4: 0	
0.333	29.063	11: 5: 0	
0.350	27.960	11: 6: 0	
0.367	27.201	11: 7: 0	
0.383	28.581	11: 8: 0	
0.400	28.305	11: 9: 0	
0.417	28.305	11:10: 0	
0.433	28.236	11:11: 0	
0.450	28.649	11:12: 0	
0.467	28.581	11:13: 0	
0.483	28.374	11:14: 0	
0.500	28.994	11:15: 0	
0.517	28.581	11:16: 0	
0.533	27.822	11:17: 0	
0.550	27.270	11:18: 0	
0.567	28.856	11:19: 0	
0.583	29.339	11:20: 0	
0.600	25.685	11:21: 0	
0.617	25.891	11:22: 0	
0.633	25.547	11:23: 0	
0.650	25.616	11:24: 0	
0.667	25.202	11:25: 0	
0.683	25.685	11:26: 0	
0.700	26.236	11:27: 0	
0.717	23.340	11:28: 0	
0.733	26.098	11:29: 0	
0.750	26.098	11:30: 0	
0.767	26.098	11:31: 0	
0.783	26.995	11:32: 0	
0.800	26.305	11:33: 0	
0.817	26.581	11:34: 0	



4/29/84

SPERRY-SUN INTERNATIONAL  
MR-SIX PRESSURE GAUGE REPORT

PAGE: 2

NORSK HYDRO A/S  
TROLL  
31/3-2

OFFSHORE NORWAY  
21 APRIL 1984  
NR-XS-40061

D.S.T.4. POST GRAVELPACK TEST. MR-6 PROBE NO.8. SECOND FLOW.

DELTA TIME HOURS	ABS PRESSURE (BARS)	TIME	
0.833	25.616	11:35: 0	21/ 4/84
0.850	26.374	11:36: 0	
0.867	26.719	11:37: 0	
0.883	25.960	11:38: 0	
0.900	26.443	11:39: 0	
0.917	26.788	11:40: 0	
0.933	24.030	11:41: 0	
0.950	26.443	11:42: 0	
0.967	26.581	11:43: 0	
0.983	25.064	11:44: 0	
1.000	25.547	11:45: 0	
1.017	26.650	11:46: 0	
1.033	26.581	11:47: 0	
1.050	26.236	11:48: 0	
1.067	27.201	11:49: 0	
1.083	26.512	11:50: 0	
1.100	27.477	11:51: 0	
1.117	26.719	11:52: 0	
1.133	26.788	11:53: 0	
1.150	26.374	11:54: 0	
1.167	26.719	11:55: 0	
1.183	25.891	11:56: 0	
1.200	26.650	11:57: 0	
1.217	26.098	11:58: 0	
1.233	26.029	11:59: 0	
1.250	23.823	12: 0: 0	
1.267	26.650	12: 1: 0	
1.283	26.443	12: 2: 0	
1.300	26.857	12: 3: 0	
1.317	26.443	12: 4: 0	
1.333	26.029	12: 5: 0	
1.350	26.374	12: 6: 0	
1.367	27.064	12: 7: 0	
1.383	25.547	12: 8: 0	
1.400	26.167	12: 9: 0	
1.417	26.029	12:10: 0	
1.433	25.685	12:11: 0	
1.450	26.305	12:12: 0	
1.467	26.098	12:13: 0	
1.483	26.029	12:14: 0	
1.500	27.133	12:15: 0	
1.517	26.029	12:16: 0	
1.533	26.788	12:17: 0	
1.550	26.167	12:18: 0	
1.567	24.857	12:19: 0	
1.633	26.374	12:23: 0	
1.683	25.616	12:26: 0	
1.717	25.960	12:28: 0	
1.750	26.995	12:30: 0	
1.783	26.098	12:32: 0	

NORSK HYDRO A/S  
TROLL  
31/3-2OFFSHORE NORWAY  
21 APRIL 1984  
NR-XS-40061

D.S.T.4. POST GRAVELPACK TEST. MR-6 PROBE NO.8. SECOND FLOW.

DELTA TIME HOURS	ABS PRESSURE (BARS)	TIME	
1.817	25.960	12:34: 0	21/ 4/84
1.850	26.719	12:36: 0	
1.883	24.926	12:38: 0	
1.917	26.029	12:40: 0	
1.950	25.271	12:42: 0	
1.983	24.995	12:44: 0	
2.083	25.822	12:50: 0	
2.167	27.408	12:55: 0	
2.250	27.615	13: 0: 0	
2.333	27.133	13: 5: 0	
2.417	28.374	13:10: 0	
2.500	28.236	13:15: 0	
2.583	28.098	13:20: 0	
2.667	27.270	13:25: 0	
2.750	28.236	13:30: 0	
2.833	28.236	13:35: 0	
2.917	27.408	13:40: 0	
3.000	26.926	13:45: 0	
3.083	30.511	13:50: 0	
3.167	31.201	13:55: 0	
3.250	35.200	14: 0: 0	
3.333	35.889	14: 5: 0	
3.417	37.889	14:10: 0	
3.500	38.303	14:15: 0	
3.583	38.303	14:20: 0	
3.667	37.544	14:25: 0	
3.750	36.303	14:30: 0	
3.833	37.889	14:35: 0	
3.917	40.095	14:40: 0	
4.000	42.164	14:45: 0	
4.083	42.578	14:50: 0	
4.167	41.336	14:55: 0	
4.250	41.819	15: 0: 0	
4.333	41.957	15: 5: 0	
4.417	42.647	15:10: 0	
4.500	44.577	15:15: 0	
4.583	43.681	15:20: 0	
4.667	43.888	15:25: 0	
4.733	44.163	15:29: 0	
4.833	44.439	15:35: 0	
4.917	44.991	15:40: 0	
5.000	45.405	15:45: 0	
5.083	44.991	15:50: 0	
5.167	38.854	15:55: 0	
5.250	39.199	16: 0: 0	
5.333	39.475	16: 5: 0	
5.417	39.406	16:10: 0	
5.500	41.199	16:15: 0	
5.583	40.371	16:20: 0	
5.667	41.268	16:25: 0	

4/29/84

SPERRY-SUN INTERNATIONAL  
MR-SIX PRESSURE GAUGE REPORT

PAGE: 4

NORSK HYDRO A/S  
TROLL  
31/3-2

OFFSHORE NORWAY  
21 APRIL 1984  
NR-XS-40061

D.S.T.4. POST GRAVELPACK TEST. MR-6 PROBE NO.8. SECOND FLOW.

DELTA TIME HOURS	ABS PRESSURE (BARS)	TIME
5.750	41.405	16:30: 0
5.833	42.164	16:35: 0
6.000	42.026	16:45: 0
6.083	42.302	16:50: 0
6.167	42.026	16:55: 0
6.250	42.371	17: 0: 0
6.333	42.233	17: 5: 0
6.417	56.782	17:10: 0
6.450	39.613	17:12: 0
6.467	39.889	17:13: 0
6.483	39.682	17:14: 0
6.500	39.544	17:15: 0
6.517	39.544	17:16: 0
6.533	39.544	17:17: 0
6.550	39.337	17:18: 0
6.583	39.337	17:20: 0
6.600	37.613	17:21: 0
6.617	36.648	17:22: 0
6.633	36.579	17:23: 0
6.650	36.372	17:24: 0
6.667	36.579	17:25: 0
6.683	38.303	17:26: 0
6.733	41.612	17:29: 0
6.767	42.509	17:31: 0
6.800	44.508	17:33: 0
6.833	44.508	17:35: 0
6.867	44.095	17:37: 0
6.900	44.163	17:39: 0
6.933	44.439	17:41: 0
6.967	44.577	17:43: 0
7.000	44.991	17:45: 0
7.033	45.060	17:47: 0
7.067	45.129	17:49: 0
7.150	39.889	17:54: 0
7.250	38.854	18: 0: 0
7.333	56.092	18: 5: 0
7.417	58.298	18:10: 0
7.500	57.885	18:15: 0
7.583	57.264	18:20: 0
7.667	58.643	18:25: 0
7.750	56.782	18:30: 0
7.833	58.436	18:35: 0
7.917	69.400	18:40: 0
8.000	71.468	18:45: 0
8.083	53.196	18:50: 0
8.167	57.540	18:55: 0
8.250	57.885	19: 0: 0
8.333	57.333	19: 5: 0
8.417	57.471	19:10: 0
8.500	57.747	19:15: 0

21/ 4/84

INCREASE TO 36/64"  
ADJ. CHOKE.

CHANGE TO 36/64"  
FIXED CHOKE.

4/29/84

SPERRY-SUN INTERNATIONAL  
MR-SIX PRESSURE GAUGE REPORT

PAGE: 5

NORSK HYDRO A/S  
TROLL  
31/3-2

OFFSHORE NORWAY  
21 APRIL 1984  
NR-XS-40061

D.S.T.4. POST GRAVELPACK TEST. MR-6 PROBE NO.8. SECOND FLOW.

DELTA TIME HOURS	ABS PRESSURE (BARS)	TIME
8.583	57.816	19:20: 0 21/ 4/84
8.667	57.816	19:25: 0
8.750	58.092	19:30: 0
8.833	55.540	19:35: 0
8.917	54.989	19:40: 0
9.000	53.886	19:45: 0
9.083	52.851	19:50: 0
9.167	52.438	19:55: 0
9.250	52.162	20: 0: 0
9.333	52.231	20: 5: 0
9.417	52.024	20:10: 0
9.500	52.093	20:15: 0
9.583	52.300	20:20: 0
9.667	52.369	20:25: 0
9.750	52.369	20:30: 0
9.833	52.369	20:35: 0
9.917	52.369	20:40: 0
10.000	52.093	20:45: 0
10.083	52.162	20:50: 0
10.167	52.507	20:55: 0
10.250	52.713	21: 0: 0
10.333	50.507	21: 5: 0
10.417	52.989	21:10: 0
10.500	47.266	21:15: 0
10.583	47.611	21:20: 0
10.667	64.090	21:25: 0
10.750	69.882	21:30: 0
10.833	67.883	21:35: 0
10.917	70.848	21:40: 0
11.000	75.536	21:45: 0
11.083	60.160	21:50: 0
11.167	61.677	21:55: 0
11.250	62.711	22: 0: 0
11.333	62.849	22: 5: 0
11.417	62.987	22:10: 0
11.500	62.780	22:15: 0
11.583	62.918	22:20: 0
11.667	63.056	22:25: 0
11.750	62.918	22:30: 0
11.833	63.056	22:35: 0
11.917	63.125	22:40: 0
12.000	62.711	22:45: 0
12.083	63.401	22:50: 0
12.167	63.401	22:55: 0
12.250	62.987	23: 0: 0
12.333	65.400	23: 5: 0
12.417	67.883	23:10: 0
12.500	69.193	23:15: 0
12.583	72.296	23:20: 0
12.667	72.847	23:25: 0

INCREASE TO 44/64"  
FIXED CHOKE.

4/29/84

SPERRY-SUN INTERNATIONAL  
MR-SIX PRESSURE GAUGE REPORT

PAGE: 6

NORSK HYDRO A/S  
TROLL  
31/3-2

OFFSHORE NORWAY  
21 APRIL 1984  
NR-XS-40061

D.S.T.4. POST GRAVELPACK TEST. MR-6 PROBE NO.8. SECOND FLOW.

DELTA TIME HOURS	ABS PRESSURE (BARS)	TIME
12.750	73.881	23:30: 0 21/ 4/84
12.833	74.295	23:35: 0
12.917	74.502	23:40: 0
13.000	74.571	23:45: 0
13.083	76.364	23:50: 0
13.167	77.329	23:55: 0
13.250	53.679	0: 0: 0 22/ 4/84
13.333	54.368	0: 5: 0
13.417	53.748	0:10: 0
13.500	53.748	0:15: 0
13.583	53.886	0:20: 0
13.667	53.886	0:25: 0
13.750	54.024	0:30: 0
13.833	53.541	0:35: 0
13.917	54.024	0:40: 0
14.000	54.024	0:45: 0
14.083	54.161	0:50: 0
14.167	54.092	0:55: 0
14.250	54.368	1: 0: 0
14.333	50.300	1: 5: 0
14.417	53.265	1:10: 0
14.500	60.919	1:15: 0
14.583	64.573	1:20: 0
14.667	65.332	1:25: 0
14.750	63.952	1:30: 0
14.833	51.886	1:35: 0
14.917	63.884	1:40: 0
15.000	65.056	1:45: 0
15.083	64.642	1:50: 0
15.167	67.262	1:55: 0
15.250	65.607	2: 0: 0
15.333	67.055	2: 5: 0
15.417	44.646	2:10: 0
15.500	42.095	2:15: 0
15.583	42.716	2:20: 0
15.667	42.371	2:25: 0
15.750	43.060	2:30: 0
15.833	42.233	2:35: 0
15.917	43.267	2:40: 0
16.000	40.026	2:45: 0
16.083	39.061	2:50: 0
16.167	35.820	2:55: 0
16.250	35.338	3: 0: 0
16.333	34.993	3: 5: 0
16.417	35.269	3:10: 0
16.500	35.269	3:15: 0
16.583	35.200	3:20: 0
16.667	35.269	3:25: 0
16.750	35.269	3:30: 0
16.833	35.062	3:35: 0

INCREASE TO 56/64"  
FIXED CHOKE AT 1:09.

4/29/84

SPERRY-SUN INTERNATIONAL  
MR-SIX PRESSURE GAUGE REPORT

PAGE: 7

NORSK HYDRO A/S  
TROLL  
31/3-2

OFFSHORE NORWAY  
21 APRIL 1984  
NR-XS-40061

D.S.T.4. POST GRAVELPACK TEST. MR-6 PROBE NO.8. SECOND FLOW.

DELTA TIME HOURS	ABS PRESSURE (BARS)	TIME
16.917	35.269	3:40: 0 22/ 4/84
17.000	35.545	3:45: 0
17.083	35.338	3:50: 0
17.167	35.407	3:55: 0
17.250	35.269	4: 0: 0
17.333	35.407	4: 5: 0
17.417	35.269	4:10: 0
17.500	35.269	4:15: 0
17.583	41.819	4:20: 0
17.667	45.129	4:25: 0
17.750	44.439	4:30: 0
17.833	35.820	4:35: 0
17.917	35.545	4:40: 0
18.000	35.682	4:45: 0
18.083	35.476	4:50: 0
18.167	35.407	4:55: 0
18.250	35.545	5: 0: 0
18.333	35.476	5: 5: 0
18.417	35.338	5:10: 0
18.500	35.407	5:15: 0
18.583	41.750	5:20: 0
18.667	41.130	5:25: 0
18.750	40.923	5:30: 0
18.833	40.371	5:35: 0
18.917	40.509	5:40: 0
19.000	40.647	5:45: 0
19.083	40.647	5:50: 0
19.167	40.716	5:55: 0
19.250	40.647	6: 0: 0
19.333	40.647	6: 5: 0
19.417	40.509	6:10: 0
19.500	40.578	6:15: 0
19.583	40.509	6:20: 0
19.667	40.923	6:25: 0
19.750	40.785	6:30: 0
19.833	40.647	6:35: 0
19.917	40.785	6:40: 0
20.000	40.716	6:45: 0
20.083	41.199	6:50: 0
20.167	41.199	6:55: 0
20.250	41.199	7: 0: 0
20.333	41.130	7: 5: 0
20.417	40.923	7:10: 0
20.500	41.268	7:15: 0
20.583	40.716	7:20: 0
20.667	40.992	7:25: 0
20.750	40.854	7:30: 0
20.833	41.405	7:35: 0
20.917	41.750	7:40: 0
21.000	41.336	7:45: 0

INCREASE TO 64/64"  
FIXED CHOKE.  
CHANGE TO 64/64"  
FIXED CHOKE AT 05:28.

4/29/84

SPERRY-SUN INTERNATIONAL  
MR-SIX PRESSURE GAUGE REPORT

PAGE: 8

NORSK HYDRO A/S  
TROLL  
31/3-2

OFFSHORE NORWAY  
21 APRIL 1984  
NR-XS-40061

D.S.T.4. POST GRAVELPACK TEST. MR-6 PROBE NO.8. SECOND FLOW.

DELTA TIME HOURS	ABS PRESSURE (BARS)	TIME
21.083	40.923	7:50: 0 22/ 4/84
21.167	41.199	7:55: 0
21.250	41.681	8: 0: 0
21.333	41.543	8: 5: 0
21.417	41.405	8:10: 0
21.500	41.268	8:15: 0
21.583	41.819	8:20: 0
21.667	41.199	8:25: 0
21.750	41.750	8:30: 0
21.833	57.816	8:35: 0
21.917	54.644	8:40: 0
22.000	55.471	8:45: 0
22.083	56.299	8:50: 0
22.167	56.023	8:55: 0
22.250	57.609	9: 0: 0
22.333	56.919	9: 5: 0
22.417	55.816	9:10: 0
22.500	55.954	9:15: 0
22.583	55.954	9:20: 0
22.667	56.230	9:25: 0
22.750	56.092	9:30: 0
22.833	56.368	9:35: 0
22.917	56.299	9:40: 0
23.000	56.368	9:45: 0
23.083	56.575	9:50: 0
23.167	56.506	9:55: 0
23.250	56.644	10: 0: 0
23.317	56.575	10: 4: 0
23.417	56.782	10:10: 0
23.500	56.782	10:15: 0
23.583	56.919	10:20: 0
23.667	56.782	10:25: 0
23.750	56.988	10:30: 0
23.833	56.988	10:35: 0
23.917	57.747	10:40: 0
24.000	57.126	10:45: 0
24.083	57.126	10:50: 0
24.167	57.264	10:55: 0
24.250	57.126	11: 0: 0
24.333	57.195	11: 5: 0
24.417	57.333	11:10: 0
24.500	57.402	11:15: 0
24.583	57.678	11:20: 0
24.667	57.609	11:25: 0
24.750	57.678	11:30: 0
24.833	57.678	11:35: 0
24.917	57.747	11:40: 0
25.000	57.747	11:45: 0
25.083	57.816	11:50: 0
25.167	57.816	11:55: 0

WELL FLOWING THROUGH  
OPEN BY-PASS VALVE.

4/29/84

SPERRY-SUN INTERNATIONAL  
MR-SIX PRESSURE GAUGE REPORT

PAGE: 9

NORSK HYDRO A/S  
TROLL  
31/3-2

OFFSHORE NORWAY  
21 APRIL 1984  
NR-XS-40061

D.S.T.4. POST GRAVELPACK TEST. MR-6 PROBE NO.8. SECOND FLOW.

DELTA TIME HOURS	ABS PRESSURE (BARS)	TIME	
25.250	57.885	12: 0: 0	22/ 4/84
25.333	57.816	12: 5: 0	
25.417	57.954	12:10: 0	
25.500	57.954	12:15: 0	
25.583	57.885	12:20: 0	
25.667	58.023	12:25: 0	
25.750	58.092	12:30: 0	
25.833	58.230	12:35: 0	
25.917	58.161	12:40: 0	
26.000	58.230	12:45: 0	
26.083	58.230	12:50: 0	
26.167	58.298	12:55: 0	
26.250	58.367	13: 0: 0	
26.333	58.230	13: 5: 0	
26.417	58.505	13:10: 0	
26.500	58.367	13:15: 0	
26.583	58.574	13:20: 0	
26.667	58.505	13:25: 0	
26.750	58.643	13:30: 0	
26.833	58.574	13:35: 0	
26.917	58.643	13:40: 0	
27.000	58.643	13:45: 0	
27.083	58.643	13:50: 0	
27.167	58.712	13:55: 0	
27.250	58.781	14: 0: 0	
27.333	58.850	14: 5: 0	
27.417	58.781	14:10: 0	
27.500	58.781	14:15: 0	
27.583	58.988	14:20: 0	
27.667	58.988	14:25: 0	
27.750	59.057	14:30: 0	
27.833	58.988	14:35: 0	
27.917	58.988	14:40: 0	
28.000	59.057	14:45: 0	
28.083	59.195	14:50: 0	
28.167	59.264	14:55: 0	
28.250	59.195	15: 0: 0	
28.333	59.333	15: 5: 0	
28.417	59.333	15:10: 0	
28.500	59.402	15:15: 0	
28.583	59.609	15:20: 0	
28.667	59.540	15:25: 0	
28.750	59.609	15:30: 0	
28.833	59.609	15:35: 0	
28.917	59.609	15:40: 0	
29.000	59.678	15:45: 0	
29.083	59.678	15:50: 0	
29.167	59.540	15:55: 0	
29.250	59.540	16: 0: 0	
29.333	59.609	16: 5: 0	



4/29/84

SPERRY-SUN INTERNATIONAL  
MR-SIX PRESSURE GAUGE REPORT

PAGE: 10

NORSK HYDRO A/S  
TROLL  
31/3-2

OFFSHORE NORWAY  
21 APRIL 1984  
NR-XS-40061

D.S.T.4. POST GRAVELPACK TEST. MR-6 PROBE NO.8. SECOND FLOW.

DELTA TIME HOURS	ABS PRESSURE (BARS)	TIME	
29.417	59.678	16:10: 0	22/ 4/84
29.500	59.678	16:15: 0	
29.583	59.746	16:20: 0	
29.667	59.815	16:25: 0	
29.750	59.884	16:30: 0	
29.833	59.815	16:35: 0	
29.917	59.678	16:40: 0	
30.000	59.815	16:45: 0	
30.083	59.815	16:50: 0	
30.167	59.815	16:55: 0	
30.250	59.884	17: 0: 0	
30.333	59.815	17: 5: 0	
30.417	59.884	17:10: 0	
30.500	59.953	17:15: 0	
30.583	60.091	17:20: 0	
30.667	60.091	17:25: 0	
30.750	60.091	17:30: 0	
30.833	60.091	17:35: 0	
30.917	60.160	17:40: 0	
31.000	60.298	17:45: 0	
31.083	60.298	17:50: 0	
31.167	60.298	17:55: 0	
31.250	60.574	18: 0: 0	
31.333	60.505	18: 5: 0	
31.417	60.505	18:10: 0	
31.500	60.367	18:15: 0	
31.583	60.712	18:20: 0	
31.667	60.505	18:25: 0	
31.750	60.436	18:30: 0	
31.833	60.781	18:35: 0	
31.917	60.712	18:40: 0	
32.000	60.712	18:45: 0	
32.083	61.057	18:50: 0	
32.167	60.505	18:55: 0	
32.250	60.298	19: 0: 0	
32.333	61.608	19: 5: 0	
32.417	60.919	19:10: 0	
32.500	61.677	19:15: 0	
32.583	60.988	19:20: 0	
32.667	61.815	19:25: 0	
32.750	60.712	19:30: 0	
32.833	60.574	19:35: 0	
32.917	59.884	19:40: 0	
33.000	61.125	19:45: 0	
33.083	61.470	19:50: 0	
33.167	61.125	19:55: 0	
33.250	60.988	20: 0: 0	
33.333	60.574	20: 5: 0	
33.417	62.642	20:10: 0	
33.500	60.712	20:15: 0	

4/29/84

SPERRY-SUN INTERNATIONAL  
MR-SIX PRESSURE GAUGE REPORT

PAGE: 11

NORSK HYDRO A/S  
TROLL  
31/3-2

OFFSHORE NORWAY  
21 APRIL 1984  
NR-XS-40061

D.S.T.4. POST GRAVELPACK TEST. MR-6 PROBE NO.8. SECOND FLOW.

DELTA TIME HOURS	ABS PRESSURE (BARS)	TIME
33.583	60.229	20:20: 0
33.667	61.815	20:25: 0
33.750	62.573	20:30: 0
33.833	60.850	20:35: 0
33.917	60.712	20:40: 0
34.000	58.919	20:45: 0
34.083	61.194	20:50: 0
34.167	61.194	20:55: 0
34.250	62.711	21: 0: 0
34.333	60.229	21: 5: 0
34.417	61.539	21:10: 0
34.500	63.332	21:15: 0
34.583	63.470	21:20: 0
34.667	62.573	21:25: 0
34.750	62.091	21:30: 0
34.833	63.125	21:35: 0
34.917	61.401	21:40: 0
35.000	57.540	21:45: 0
35.083	44.439	21:50: 0
35.167	48.990	21:55: 0
35.250	49.197	22: 0: 0
35.333	49.197	22: 5: 0
35.417	49.473	22:10: 0
35.500	49.197	22:15: 0
35.583	52.644	22:20: 0
35.667	52.644	22:25: 0
35.750	49.266	22:30: 0
35.833	47.887	22:35: 0
35.917	50.231	22:40: 0
36.000	51.128	22:45: 0
36.083	51.197	22:50: 0
36.167	51.197	22:55: 0
36.250	54.161	23: 0: 0
36.333	42.371	23: 5: 0
36.417	41.750	23:10: 0
36.500	1.069	23:15: 0
36.583	1.069	23:20: 0
36.667	1.069	23:25: 0
36.750	49.266	23:30: 0
36.833	47.956	23:35: 0
36.917	41.130	23:40: 0
37.000	48.163	23:45: 0
37.083	44.301	23:50: 0
37.167	44.577	23:55: 0
37.250	44.370	0: 0: 0
37.333	44.784	0: 5: 0
37.417	41.199	0:10: 0
37.500	41.474	0:15: 0
37.583	41.336	0:20: 0
37.667	40.992	0:25: 0

22/ 4/84

DECREASE TO 56/64"  
FIXED CHOKE.

WELL SHUT-IN AT  
SURFACE TREE.

WELL OPENED TO FLOW  
ON 56/64" FIXED CHOKE.

23/ 4/84

4/29/84

SPERRY-SUN INTERNATIONAL  
MR-SIX PRESSURE GAUGE REPORT

PAGE: 12

NORSK HYDRO A/S  
TROLL  
31/3-2

OFFSHORE NORWAY  
21 APRIL 1984  
NR-XS-40061

D.S.T.4. POST GRAVELPACK TEST. MR-6 PROBE NO.8. SECOND FLOW.

DELTA TIME HOURS	ABS PRESSURE (BARS)	TIME
37.750	40.578	0:30: 0 23/ 4/84
37.833	40.992	0:35: 0
37.917	40.923	0:40: 0
38.000	40.647	0:45: 0
38.083	40.785	0:50: 0
38.167	40.647	0:55: 0
38.250	41.061	1: 0: 0
38.333	40.992	1: 5: 0
38.417	41.268	1:10: 0
38.500	41.199	1:15: 0
38.583	41.061	1:20: 0
38.667	40.992	1:25: 0
38.750	41.130	1:30: 0
38.833	41.336	1:35: 0
38.917	41.268	1:40: 0
39.000	41.061	1:45: 0
39.083	40.923	1:50: 0
39.167	40.923	1:55: 0
39.250	41.130	2: 0: 0
39.333	41.405	2: 5: 0
39.417	41.336	2:10: 0
39.500	40.992	2:15: 0
39.583	41.474	2:20: 0
39.667	41.336	2:25: 0
39.750	41.199	2:30: 0
39.833	41.336	2:35: 0
39.917	41.405	2:40: 0
40.000	41.130	2:45: 0
40.083	41.405	2:50: 0
40.167	41.336	2:55: 0
40.250	41.405	3: 0: 0
40.333	41.130	3: 5: 0
40.417	41.750	3:10: 0
40.500	41.543	3:15: 0
40.583	41.405	3:20: 0
40.667	41.199	3:25: 0
40.750	41.061	3:30: 0
40.833	13.963	3:35: 0
40.917	14.583	3:40: 0
41.000	14.721	3:45: 0
41.083	15.411	3:50: 0
41.167	16.583	3:55: 0
41.250	16.514	4: 0: 0
41.333	18.238	4: 5: 0
41.417	25.753	4:10: 0
41.500	28.994	4:15: 0
41.583	27.339	4:20: 0
41.667	29.270	4:25: 0
41.750	28.098	4:30: 0
41.833	29.408	4:35: 0

DECREASE TO 26/64"  
FIXED CHOKE.

NORSK HYDRD A/S  
TROLL  
31/3-2OFFSHORE NORWAY  
21 APRIL 1984  
NR-XS-40061

D.S.T.4. POST GRAVELPACK TEST. MR-6 PROBE NO.8. SECOND FLOW.

DELTA TIME HOURS	ABS PRESSURE (BARS)	TIME
41.917	23.616	4:40: 0 23/ 4/84
42.000	23.547	4:45: 0
42.083	21.754	4:50: 0
42.167	28.925	4:55: 0
42.250	28.236	5: 0: 0
42.333	27.408	5: 5: 0
42.417	24.788	5:10: 0
42.500	24.926	5:15: 0
42.583	25.547	5:20: 0
42.667	23.547	5:25: 0
42.750	25.960	5:30: 0
42.833	22.030	5:35: 0
42.917	24.857	5:40: 0
43.000	21.410	5:45: 0
43.083	20.789	5:50: 0
43.167	22.099	5:55: 0
43.250	22.306	6: 0: 0
43.333	22.168	6: 5: 0
43.417	21.065	6:10: 0
43.500	20.789	6:15: 0
43.583	22.306	6:20: 0
43.667	20.927	6:25: 0
43.750	20.789	6:30: 0
43.833	22.926	6:35: 0
43.917	22.099	6:40: 0
44.000	21.341	6:45: 0
44.083	20.996	6:50: 0
44.167	21.479	6:55: 0
44.250	22.926	7: 0: 0
44.333	21.892	7: 5: 0
44.417	21.892	7:10: 0
44.500	22.789	7:15: 0
44.583	23.271	7:20: 0
44.667	21.547	7:25: 0
44.750	21.341	7:30: 0
44.833	20.306	7:35: 0
44.917	24.650	7:40: 0
45.000	21.961	7:45: 0
45.083	21.479	7:50: 0
45.167	25.547	7:55: 0
45.250	24.719	8: 0: 0
45.333	15.411	8: 5: 0

END OF TEST.