

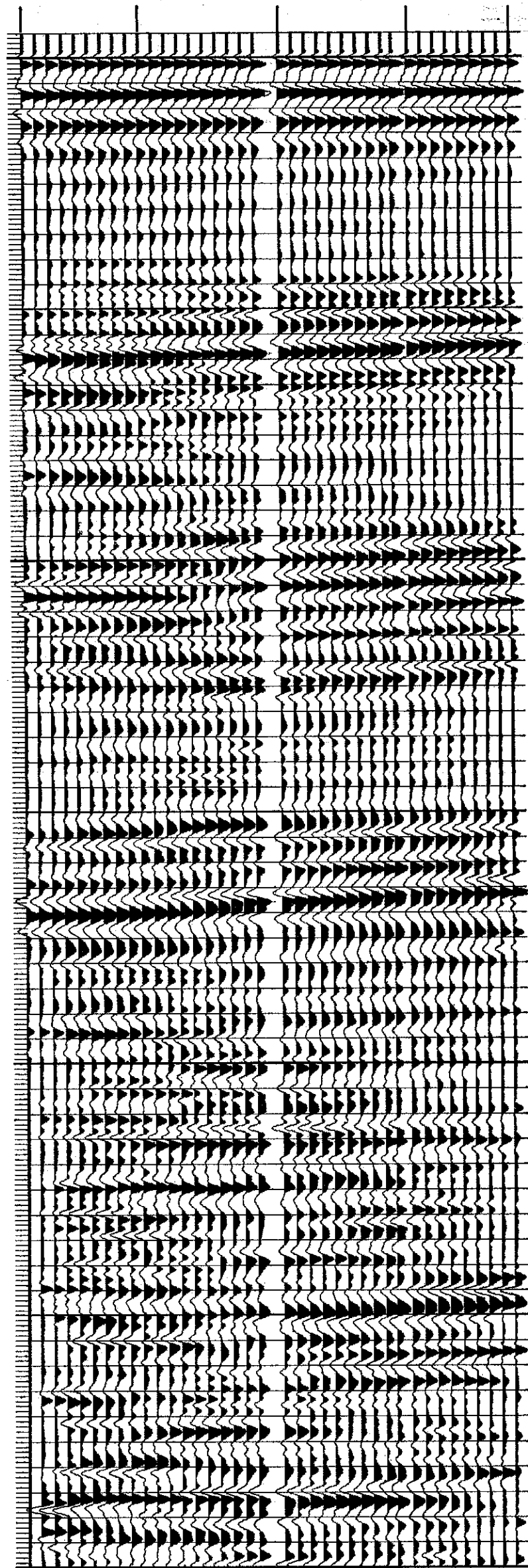
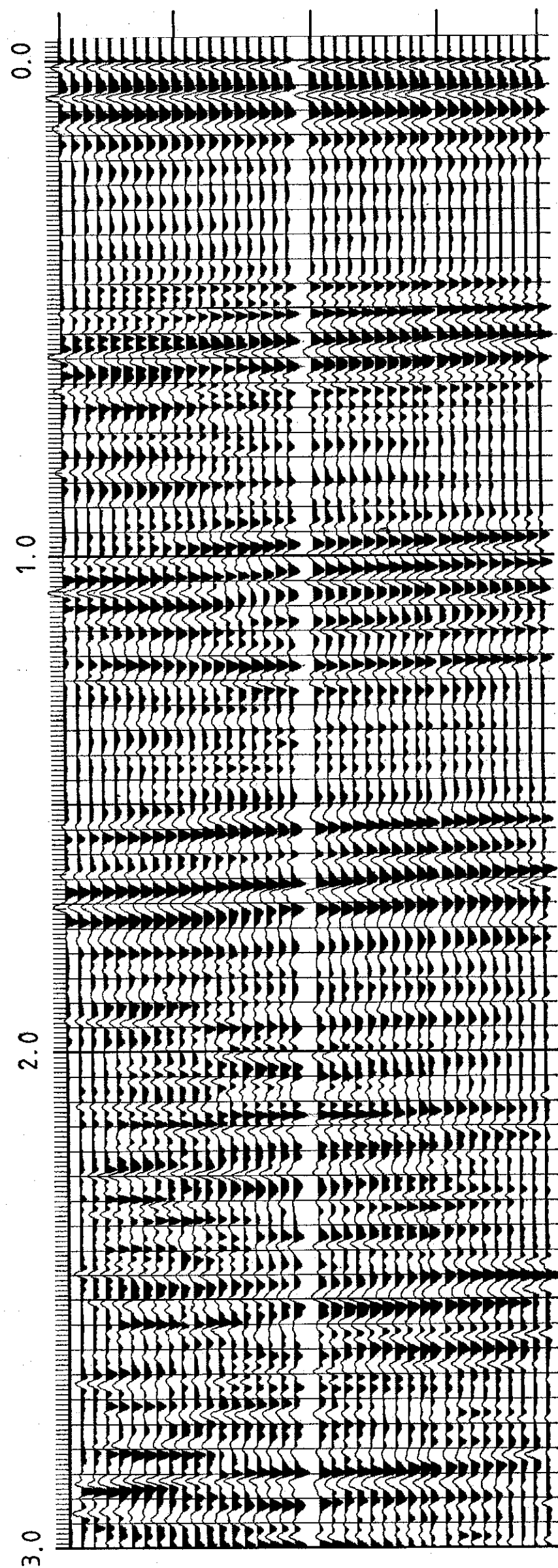
DISPLAY 3  
(Pol. 1)

DISPLAY 3  
(Pol. 2)

LEVEL No.	1	10	20	30	38
DEPTH IN METRES BELOW RT	2075	1850	1575	1325	1125

1	10	20	30	38
2075	1850	1575	1325	1125

TIME IN SECONDS



SEISMOGRAPH SERVICE (ENGLAND) LTD.

COMPANY : NORSK HYDRO A/S  
 WELL : 31/3-2  
 LOCATION : 60° 52' 11.41" N  
 03 40 41.79 E  
 DISPLAY : OFFSET SOURCE (SOUTH)  
 VERTICAL SEISMIC PROFILE  
 DISPLAY 3. DOWNGOING WAVEFIELD  
 (POLARITIES 1 & 2)

TIME SCALE : 10CM/SECOND  
 DEPTH SCALE : 1:9843  
 DATE PROCESSED : APRIL 1984

FIELD ACQUISITION

SURVEY DATE : 4TH APRIL 1984  
 SOURCE : BDLT AIRGUN (80 CU. IN.)  
 SOURCE DEPTH : 10M  
 GUN PRESSURE : 2000PSI  
 SOURCE MONITOR : NEAR-FIELD HYDROPHONE  
 MONITOR DEPTH : 13M  
 WELL GEOPHONE : 3D HT  
 RECORDING EQUIPMENT : DWS 2  
 SAMPLE RATE : 1MS  
 WATER DEPTH : 344M  
 VSP DATUM : MSL  
 REFERENCE LEVEL : RT AT 21M AMSL  
 SOURCE OFFSET : 700M FROM WELLHEAD

PROCESSING SEQUENCE

DOWNGOING WAVEFIELD  
 EDIT  
 AUTOMATED TRACE ALIGNMENT  
 VERTICAL STACK OF CONSTANT DEPTH TRACES  
 AMPLITUDE RECOVERY PROPORTIONAL TO T  
 SHIFT TO ALIGN FIRST ARRIVALS AT TIME ZERO  
 13:1 MEDIAN PICK  
 BANDPASS FILTER (9-12, 50-60HZ)  
 TRACE EQUALISATION (500MS WINDOW, 250MS OVERLAP)  
 PRIOR TO DISPLAY

POLARITY 1:  
 AN UPGOING COMPRESSION WAVE IS REPRESENTED BY A WHITE TROUGH  
 THE DOWNGOING FIRST ARRIVAL COMPRESSION WAVE IS A BLACK PEAK  
 POLARITY 2:  
 AN UPGOING COMPRESSION WAVE IS REPRESENTED BY A BLACK PEAK  
 THE DOWNGOING FIRST ARRIVAL COMPRESSION WAVE IS A WHITE TROUGH