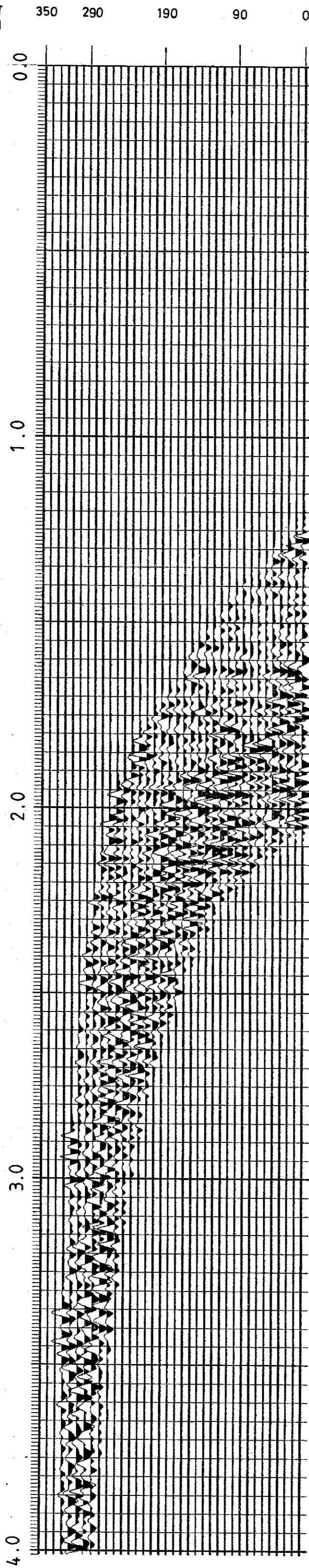


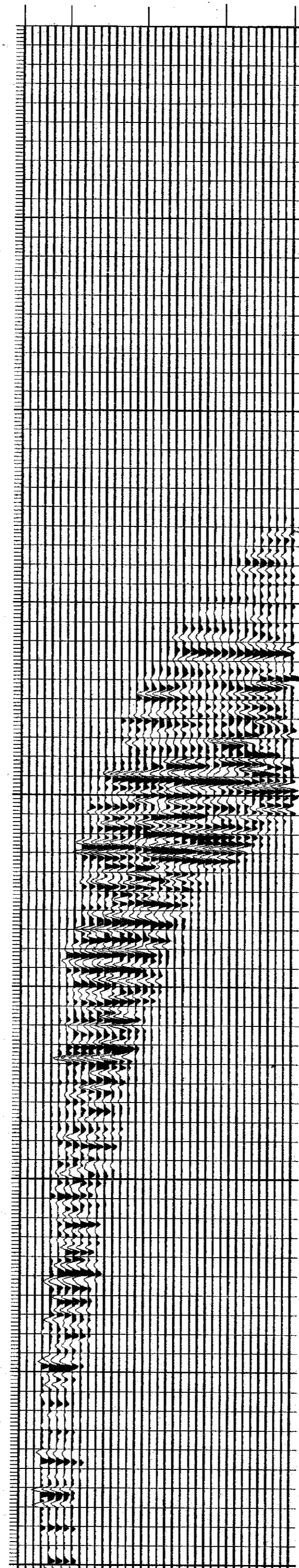
DISPLAY 6A
(Pol. 2)

DISPLAY 6B
(Pol. 2)

HORIZONTAL OFFSET FROM WELLHEAD IN METRES.



350 290 190 90 0



DIP	LITHO

TIME IN SECONDS

0.0
1.0
2.0
3.0
4.0



SEISMOGRAPH SERVICE (ENGLAND) LTD.

COMPANY : NORSK HYDRO A/S
WELL : 31/3-2
LOCATION : 60° 52' 11.41" N
 03 40 41.79 E
DISPLAY : OFFSET SOURCE (SOUTH)
 VERTICAL SEISMIC PROFILE
 IMAGE RECONSTRUCTION
 DISPLAYS 6(A) & 6(B)
 (POLARITY 2)

TIME SCALE : 10CM/SECOND
OFFSET SCALE : 1:5000
DATE PROCESSED : APRIL 1984

FIELD ACQUISITION

SURVEY DATE : 4TH APRIL 1984
SOURCE : BOLT AIRGUN (80 CU. IN.)
SOURCE DEPTH : 10M
GUN PRESSURE : 2000PSI
SOURCE MONITOR : NEAR-FIELD HYDROPHONE
MONITOR DEPTH : 13M
WELL GEOPHONE : 3D HT
RECORDING EQUIPMENT : DWS 2
SAMPLE RATE : 1MS
WATER DEPTH : 344M
USP DATUM : MSL
REFERENCE LEVEL : RT AT 21M AMSL
SOURCE OFFSET : 700M FROM WELLHEAD

PROCESSING SEQUENCE

IMAGE RECONSTRUCTION

EDIT
AUTOMATED TRACE ALIGNMENT
STACK OF CONSTANT DEPTH TRACES
AMPLITUDE RECOVERY PROPORTIONAL TO T
FIRST ARRIVALS SHIFTED TO ALIGN AT TIME ZERO
DOWNGOING WAVE SUBTRACTION
FIRST ARRIVALS SHIFTED TO ONE-WAY TIME SUB DATUM
SPECIAL USP DECONVOLUTION (660MS DERIVATION WINDOW)
BANDPASS FILTER (9-12, 50-60HZ)
MAPPING OF UPGOING WAVES
SHIFT TO TWO-WAY TIME SUB DATUM
PLUS

DISPLAY 6(A)
BANDPASS FILTER (9-12, 50-60HZ)
DISPLAY 6(B)
BANDPASS FILTER (9-12, 50-60HZ)
7:1 MEDIAN PICK
POST MEDIAN FILTER (5-10, 60-70HZ)

POLARITY 2:
AN UPGOING COMPRESSION WAVE IS REPRESENTED BY A BLACK PEAK
A DOWNGOING FIRST ARRIVAL COMPRESSION WAVE IS A WHITE TROUGH