

DISPLAY 3
(POLARITY 1)

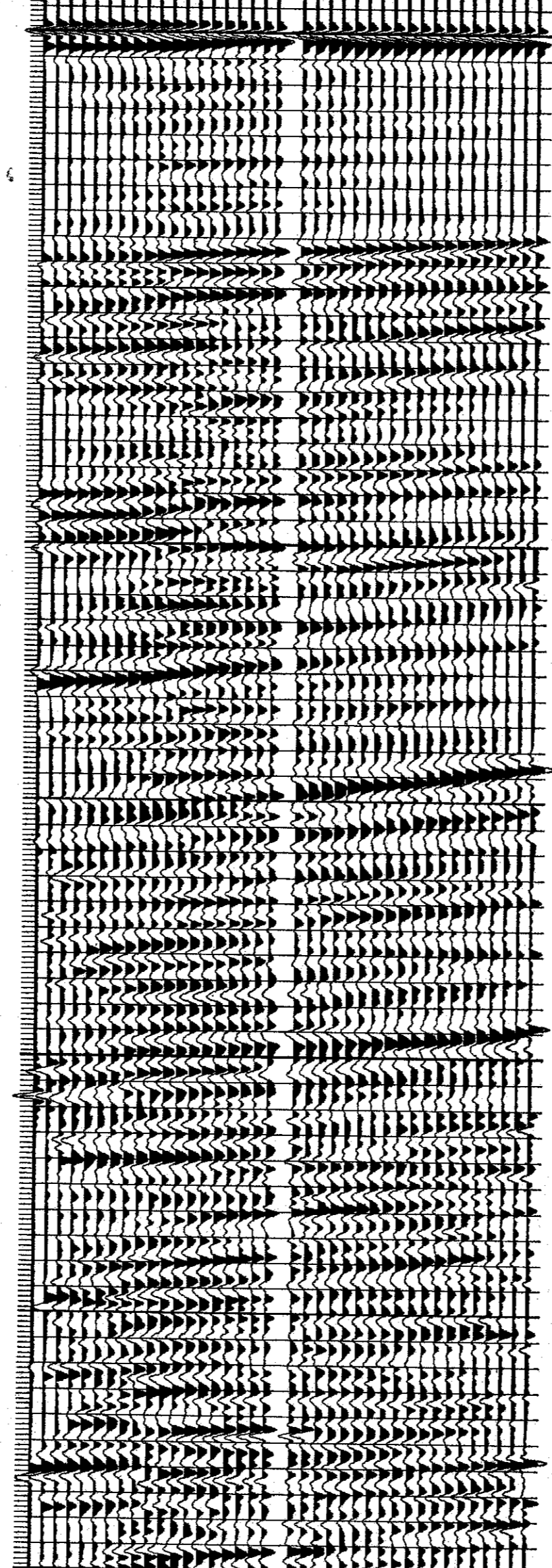
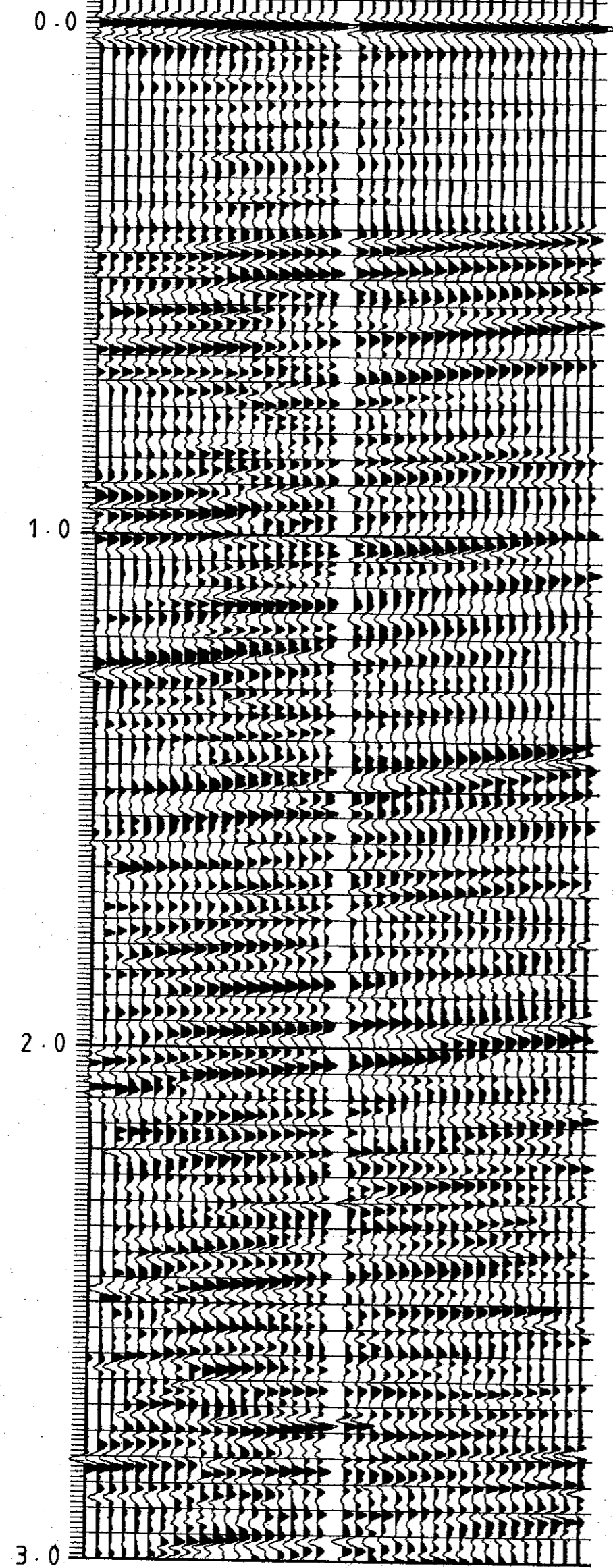
DISPLAY 3
(POLARITY 2)

LEVEL No.
DEPTH IN METRES
BELOW RT.

1 10 20 30 38
2075 1850 1575 1325 1125

1 10 20 30 38
2075 1850 1575 1325 1125

TIME IN SECONDS



SEISMOGRAPH SERVICE (ENGLAND) LTD.

COMPANY : NORSK HYDRO A/S
WELL : 31/3-2
LOCATION : 60° 52' 11.41" N
 03 40 41.79 E
DISPLAY : OFFSET SOURCE (NORTH)
 VERTICAL SEISMIC PROFILE
 DISPLAY 3. DOWNGOING WAVEFIELD
 (POLARITIES 1 & 2)

TIME SCALE : 10CM/SECOND
DEPTH SCALE : 1:9843
DATE PROCESSED : APRIL 1984

FIELD ACQUISITION

SURVEY DATE : 4TH APRIL 1984
SOURCE : BOLT AIRGUN (80 CU. IN.)
SOURCE DEPTH : 10M
GUN PRESSURE : 2000PSI
SOURCE MONITOR : NEAR-FIELD HYDROPHONE
MONITOR DEPTH : 13M
WELL GEOPHONE : 3D HT
RECORDING EQUIPMENT : DWS 2
SAMPLE RATE : 1MS
WATER DEPTH : 344M
USP DATUM : MSL
REFERENCE LEVEL : RT AT 21M AMSL
SOURCE OFFSET : 1200M FROM WELLHEAD

PROCESSING SEQUENCE

DOWNGOING WAVEFIELD
EDIT
AUTOMATED TRACE ALIGNMENT
VERTICAL STACK OF CONSTANT DEPTH TRACES
SOURCE SIGNATURE DECONVOLUTION (300MS DERIVATION WINDOW)
AMPLITUDE RECOVERY PROPORTIONAL TO T
SHIFT TO ALIGN FIRST ARRIVALS AT TIME ZERO
13:1 MEDIAN PICK ENHANCING DIPS OF UP TO 2MS TO THE LEFT
BANDPASS FILTER (9-12, 50-60HZ)
TRACE EQUALISATION (500MS WINDOW, 250MS OVERLAP)
PRIOR TO DISPLAY

POLARITY 1:
AN UPGOING COMPRESSION WAVE IS REPRESENTED BY A WHITE TROUGH
THE DOWNGOING FIRST ARRIVAL COMPRESSION WAVE IS A BLACK PEAK
POLARITY 2:
AN UPGOING COMPRESSION WAVE IS REPRESENTED BY A BLACK PEAK
THE DOWNGOING FIRST ARRIVAL COMPRESSION WAVE IS A WHITE TROUGH