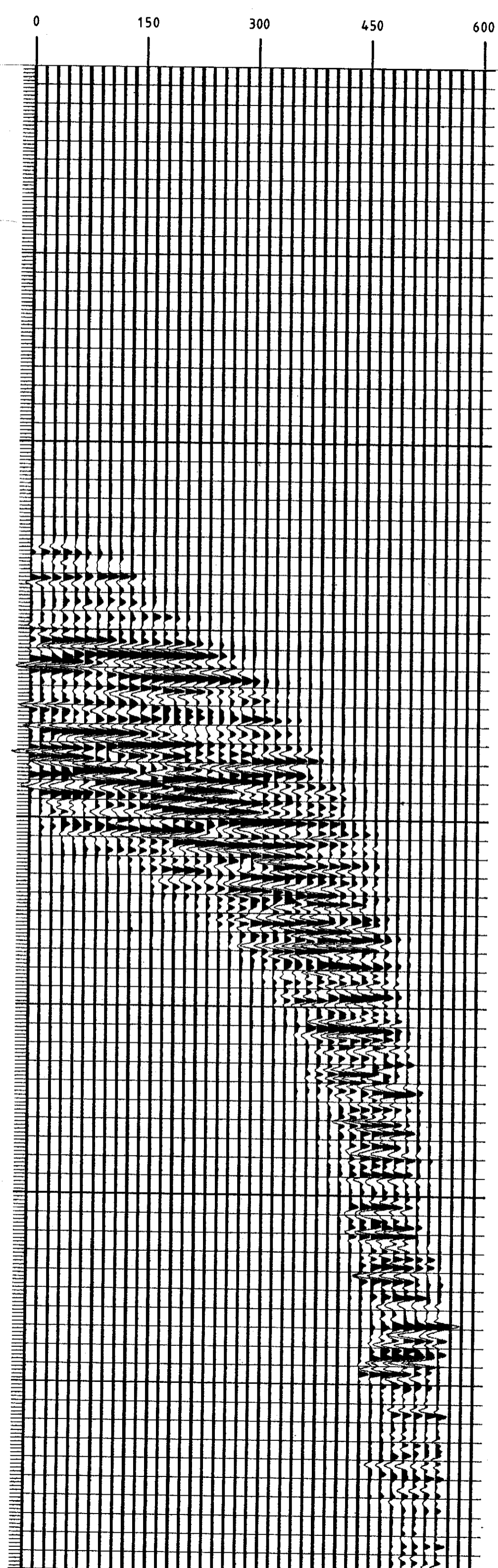
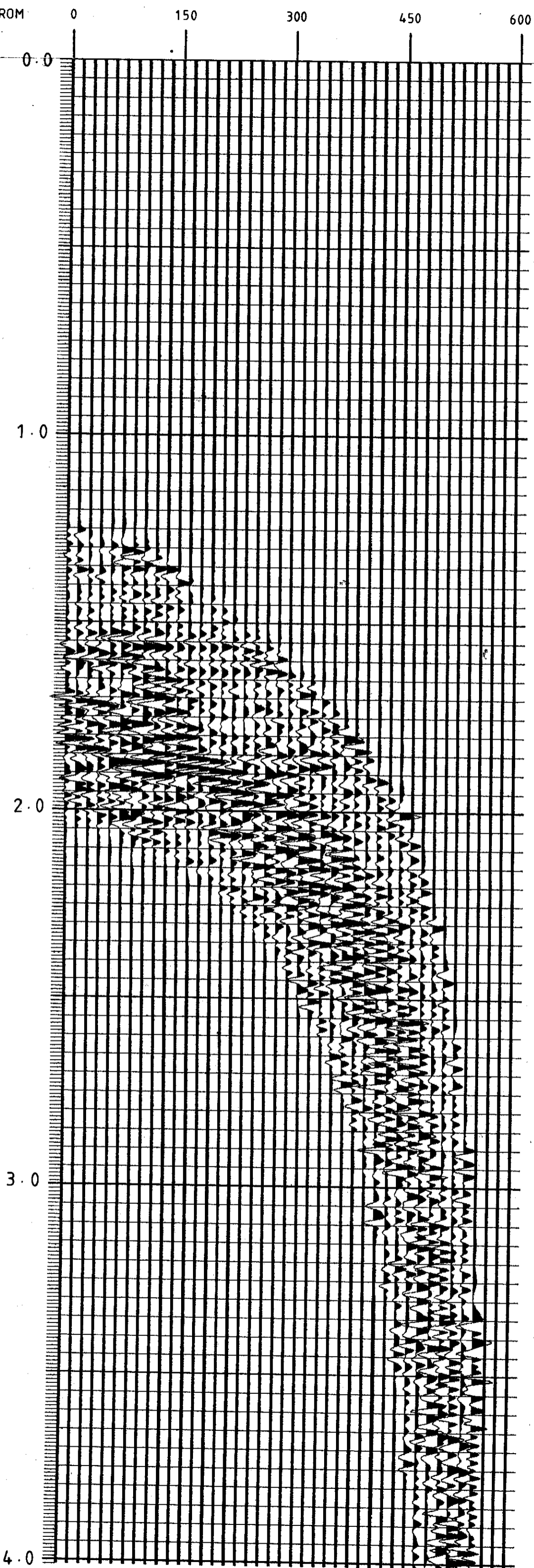


6A

6B

HORIZONTAL OFFSET FROM
WELLHEAD IN METRES.

DIP	LITHO



SEISMOGRAPH SERVICE (ENGLAND) LTD.

COMPANY : NORSK HYDRO A/S
 WELL : 31/3-2
 LOCATION : 60° 52' 11.41" N
 03 40 41.79 E
 DISPLAY : OFFSET SOURCE (NORTH)
 VERTICAL SEISMIC PROFILE
 IMAGE RECONSTRUCTION
 DISPLAYS 6(A) & 6(B)
 (POLARITY 1)

TIME SCALE : 10CM/SECOND
 OFFSET SCALE : 1:5000
 DATE PROCESSED : APRIL 1984

FIELD ACQUISITION

SURVEY DATE : 4TH APRIL 1984
 SOURCE : BOLT AIRGUN (80 CU. IN.)
 SOURCE DEPTH : 10M
 GUN PRESSURE : 2000PSI
 SOURCE MONITOR : NEAR-FIELD HYDROPHONE
 MONITOR DEPTH : 13M
 WELL GEOPHONE : 3D HT
 RECORDING EQUIPMENT : DWS 2
 SAMPLE RATE : 1MS
 WATER DEPTH : 344M
 USP DATUM : MSL
 REFERENCE LEVEL : RT AT 21M AMSL
 SOURCE OFFSET : 1200M FROM WELLHEAD

PROCESSING SEQUENCE

IMAGE RECONSTRUCTION

EDIT
 AUTOMATED TRACE ALIGNMENT
 STACK OF CONSTANT DEPTH TRACES
 SOURCE SIGNATURE DECONVOLUTION (300MS DERIVATION WINDOW)
 AMPLITUDE RECOVERY PROPORTIONAL TO T
 FIRST ARRIVALS SHIFTED TO ALIGN AT TIME ZERO
 DOWNGOING WAVE SUBTRACTION
 FIRST ARRIVALS SHIFTED TO ONE-WAY TIME SUB DATUM
 SPECIAL USP DECONVOLUTION (600MS DERIVATION WINDOW)
 BANDPASS FILTER (9-12, 50-60HZ)
 MAPPING OF UPGOING WAVES
 SHIFT TO TWO-WAY TIME SUB DATUM
 PLUS
 DISPLAY 6(A)
 BANDPASS FILTER (9-12, 50-60HZ)
 DISPLAY 6(B)
 BANDPASS FILTER (9-12, 50-60HZ)
 7:1 MEDIAN PICK
 POST MEDIAN FILTER (5-10, 60-70HZ)

POLARITY 1:
 AN UPGOING COMPRESSION WAVE IS REPRESENTED BY A WHITE TROUGH
 A DOWNGOING FIRST ARRIVAL COMPRESSION WAVE IS A BLACK PEAK