

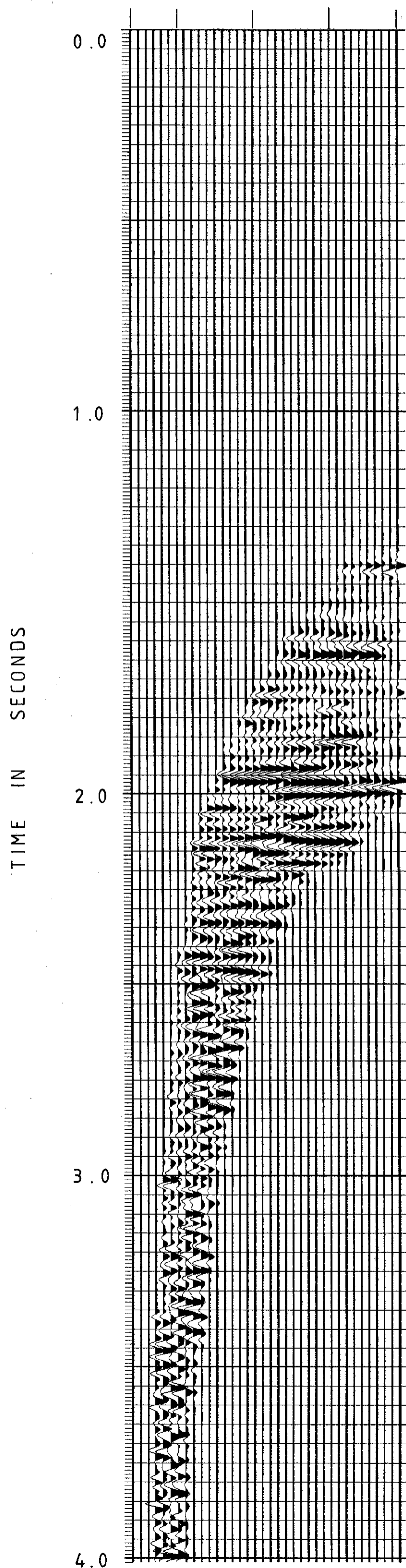
DISPLAY 8
(Pol. 2)



SEISMOGRAPH SERVICE (ENGLAND) LTD.

HORIZONTAL OFFSET
FROM WELLHEAD IN
METRES.

350 290 190 90 0



COMPANY : NORSK HYDRO A/S
WELL : 31/3-2
LOCATION : 60° 52' 11.41" N
03 40 41.79 E
DISPLAY : OFFSET SOURCE (SOUTH)
VERTICAL SEISMIC PROFILE
2 STAGE IMAGE RECONSTRUCTION
DISPLAY 8
(POLARITY 2)

TIME SCALE : 10CM/SECOND
OFFSET SCALE : 1:5000
DATE PROCESSED : JUNE 1984

FIELD ACQUISITION

SURVEY DATE : 4TH APRIL 1984
SOURCE : BOLT AIRGUN (80 CU. IN.)
SOURCE DEPTH : 10M
GUN PRESSURE : 2000PSI
SOURCE MONITOR : NEAR-FIELD HYDROPHONE
MONITOR DEPTH : 13M
WELL GEOPHONE : 3D HT
RECORDING EQUIPMENT : DWS 2
SAMPLE RATE : 1MS
WATER DEPTH : 344M
VSP DATUM : MSL
REFERENCE LEVEL : RT AT 21M AMSL
SOURCE OFFSET : 700M FROM WELLHEAD

PROCESSING SEQUENCE

IMAGE RECONSTRUCTION
DISPLAY 8
EDIT
AUTOMATED TRACE ALIGNMENT
STACK OF CONSTANT DEPTH TRACES
AMPLITUDE RECOVERY PROPORTIONAL TO T
FIRST ARRIVALS SHIFTED TO ALIGN AT TIME ZERO
DOWNGOING WAVE SUBTRACTION
FIRST ARRIVALS SHIFTED TO ONE-WAY TIME SUB DATUM
SPECIAL VSP DECONVOLUTION (660MS DERIVATION WINDOW)
BANDPASS FILTER (10-15, 40-50HZ)
2 STAGE MAPPING OF UPGOING WAVES INCLUDING
9:1 MEDIAN PICK
SHIFT TO TWO-WAY TIME SUB DATUM
POST MEDIAN FILTER (9-12, 50-60HZ)

POLARITY 2:
AN UPGOING COMPRESSION WAVE IS REPRESENTED BY A BLACK PEAK
A DOWNGOING FIRST ARRIVAL COMPRESSION WAVE IS A WHITE TROUGH