

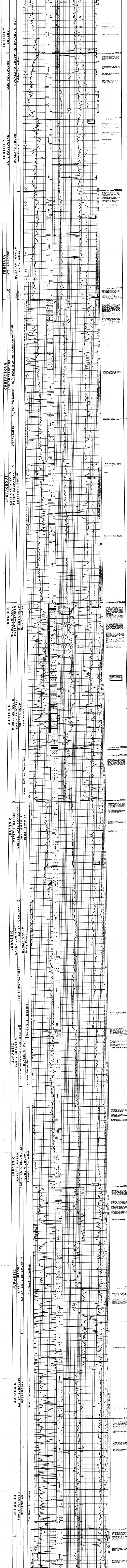
Norsk Hydro Completion Log
Well: 3079-3A
Scale: 1:2500

Geographic Information:
Country: Norway
County: Nordland
District: Nordland
Field: Fekken
Operator: Norsk Hydro
Well: 3079-3A
Drilled: April 28, 1984
Completed: May 21, 1984

Well Data:
Well Name: 3079-3A
Well Type: Production
Well Status: Due to technical reasons (see notes)
Well Depth: 4075.00 m
Well Completion: 3079-3A

Log Data Summary

Log Type	Start Depth (m)	End Depth (m)	Notes
LOG	0	4075	Full depth log
SP	0	4075	Spontaneous potential
GR	0	4075	Gamma ray
SR	0	4075	Stratigraphic correlation
SR	0	4075	Stratigraphic correlation
SR	0	4075	Stratigraphic correlation



Core Reports

Core No.	Depth (m)	Interval (m)	Notes
1	0-10	0-10	...
2	10-20	10-20	...
3	20-30	20-30	...
4	30-40	30-40	...
5	40-50	40-50	...
6	50-60	50-60	...
7	60-70	60-70	...
8	70-80	70-80	...
9	80-90	80-90	...
10	90-100	90-100	...
11	100-110	100-110	...
12	110-120	110-120	...
13	120-130	120-130	...
14	130-140	130-140	...
15	140-150	140-150	...
16	150-160	150-160	...
17	160-170	160-170	...
18	170-180	170-180	...
19	180-190	180-190	...
20	190-200	190-200	...
21	200-210	200-210	...
22	210-220	210-220	...
23	220-230	220-230	...
24	230-240	230-240	...
25	240-250	240-250	...
26	250-260	250-260	...
27	260-270	260-270	...
28	270-280	270-280	...
29	280-290	280-290	...
30	290-300	290-300	...
31	300-310	300-310	...
32	310-320	310-320	...
33	320-330	320-330	...
34	330-340	330-340	...
35	340-350	340-350	...
36	350-360	350-360	...
37	360-370	360-370	...
38	370-380	370-380	...
39	380-390	380-390	...
40	390-400	390-400	...
41	400-410	400-410	...
42	410-420	410-420	...
43	420-430	420-430	...
44	430-440	430-440	...
45	440-450	440-450	...
46	450-460	450-460	...
47	460-470	460-470	...
48	470-480	470-480	...
49	480-490	480-490	...
50	490-500	490-500	...

Pressure and Temperature Data

Depth (m)	Pressure (bar)	Temperature (°C)	Notes
0	1.01	10.0	Surface
100	1.10	10.5	...
200	1.20	11.0	...
300	1.30	11.5	...
400	1.40	12.0	...
500	1.50	12.5	...
600	1.60	13.0	...
700	1.70	13.5	...
800	1.80	14.0	...
900	1.90	14.5	...
1000	2.00	15.0	...
1100	2.10	15.5	...
1200	2.20	16.0	...
1300	2.30	16.5	...
1400	2.40	17.0	...
1500	2.50	17.5	...
1600	2.60	18.0	...
1700	2.70	18.5	...
1800	2.80	19.0	...
1900	2.90	19.5	...
2000	3.00	20.0	...
2100	3.10	20.5	...
2200	3.20	21.0	...
2300	3.30	21.5	...
2400	3.40	22.0	...
2500	3.50	22.5	...
2600	3.60	23.0	...
2700	3.70	23.5	...
2800	3.80	24.0	...
2900	3.90	24.5	...
3000	4.00	25.0	...
3100	4.10	25.5	...
3200	4.20	26.0	...
3300	4.30	26.5	...
3400	4.40	27.0	...
3500	4.50	27.5	...
3600	4.60	28.0	...
3700	4.70	28.5	...
3800	4.80	29.0	...
3900	4.90	29.5	...
4000	5.00	30.0	...
4100	5.10	30.5	...
4200	5.20	31.0	...
4300	5.30	31.5	...
4400	5.40	32.0	...
4500	5.50	32.5	...
4600	5.60	33.0	...
4700	5.70	33.5	...
4800	5.80	34.0	...
4900	5.90	34.5	...
5000	6.00	35.0	...

Well Completion Summary

Well Name	Well Type	Well Status	Well Depth (m)	Well Completion
3079-3A	Production	Due to technical reasons	4075.00	3079-3A