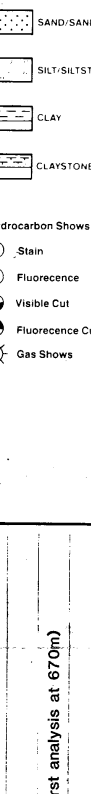


Completion log
Oseberg
 Scale 1:500
Well: 30/6-21

1:6 811 817
REGISTRERT
 OLDEKRETTRETT



Location map

Elevation KB: 25 m
 Water Depth: 112 m MSL
 Total Depth: 3100 m RRS1
 Total Depth: 3107 m RRS2
 Date Sounded: 20.02.87
 Reached Total Depth: 20.03.87
 Computed: 03.04.87
 Well Class: Appraisal Alpha North
 Prepared by: P.A. Møller
 Date: July, 1987

Country: Norway
 Owners: Norsk Hydro/ Statoil/ Elf/ Mobil/ Total/ Oseberg (Alpha North)
 Field:
 Rig:
 Contractor: Vessco
 Mudlogging Company: Oseberg
 Logging Company: Oseberg
 Geologists: S. Øster-Simonsen
REGISTRERT
 OLDEKRETTRETT
 G. Torseth
 P.A. Møller

Coordinates (UTM)
 Easting: 26
 North: 6022555.6 N
 Zone: 18Q UTM

Target: Vertical well

casing records:
 20" csg shoe: 221 m
 15" csg shoe: 650 m
 10" csg shoe: 1880 m
 9 1/4" csg shoe: 2543 m
 7" inner: 2558 m

Comments:

Log Run

MWD	GR	RES	DI	E	SDY	GR	LDL	CL	NTY	CAL	RFT	P	Pressures	CEL	V	DL	GR	VSP					
187	-	1720m	3A	2543	-	267 fm	4C	2640	-	106m	3A	2570	-	266m	3A	1375	-	170m	4B	2135	-	204m	
4C	2640	-	106m	3A	2570	-	266m	3A	2570	-	266m	4E	2617	-	309m	4C	2593	-	277m	4A	1230	-	276m

DL	SS	GR	CAL	LDL	CL	NTY	CAL	EPT	GR	RFT	P	Pressures	CEL	V	DL	GR	VSP						
1A	1600	-	1720m	3A	2543	-	267 fm	4C	2640	-	106m	3A	2570	-	266m	3A	1375	-	170m	4B	2135	-	204m
4C	2640	-	106m	3A	2570	-	266m	3A	2570	-	266m	4E	2617	-	309m	4C	2593	-	277m	4A	1230	-	276m

Legend



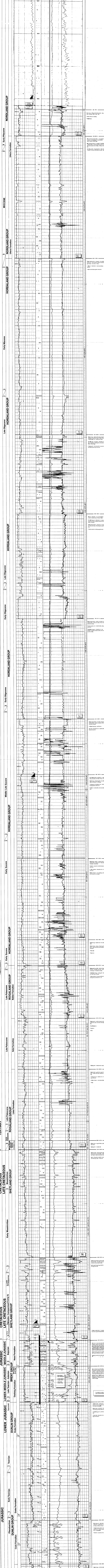
FORMATION

STAGE (First analysis at 670m)

SYSTEM (Reviewed by Østrem, A.S.)

SCHLUMBERGER - WIRELINE LOGS

EXLOG - MWD (147-660m)



CORE REPORTS

Core No.	Depth (m)	Core Type	Notes
1	2543 - 2558	7" inner	...
2	2558 - 2573	9 1/4" csg	...
3	2573 - 2588	10" csg	...
4	2588 - 2603	15" csg	...
5	2603 - 2618	20" csg	...