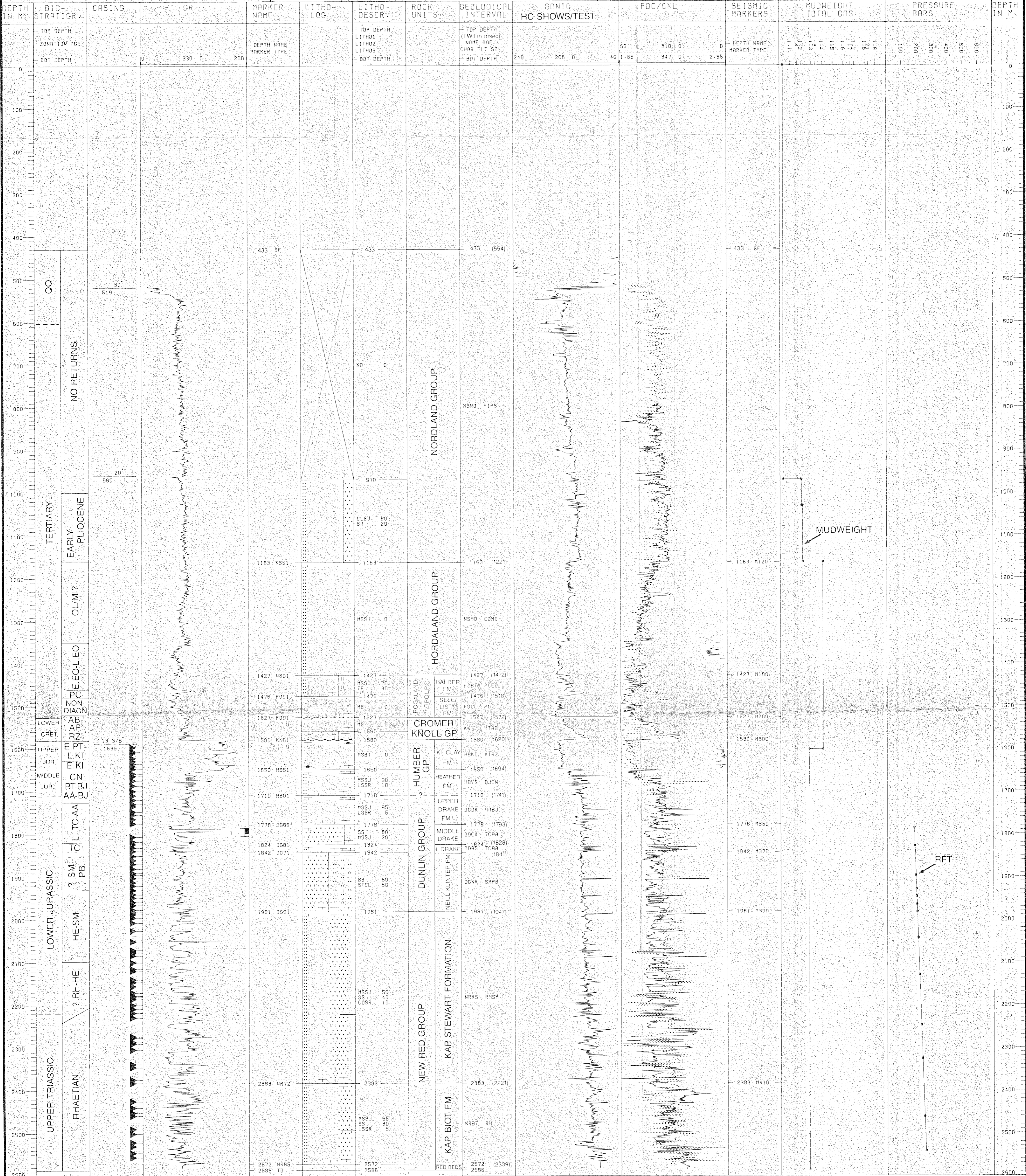


NORSKE SHELL E & P WELL SUMMARY SHEET
 6508/05-01
 6508/5-1
 SCALE 1: 5000.
 25 SEP 87

OPERATOR : SHELL
 RIG : WEST VANGUARD
 ELEVATION DF : 22 M
 ELEVATION CL : -411 M
 LONGITUDE : E 8° 28' 35"
 LATITUDE : N 65° 42' 51"
 X-COORDIN. : 475973
 Y-COORDIN. : 7288341
 PROJ. SYSTEM : 32
 LICENCE : 125
 ROUND NO. : 108
 REGRD CODE : 100855284235510

RESULTS :
 OBJECTIVE: SANDSTONES OF THE LOWER JURASSIC MIDDLE
 DRAKE FM. SECONDARY OBJECTIVES ARE SANDSTONES
 OF THE MIDDLE JURASSIC HALTENBANKEN FM. AND
 THE LOWER JURASSIC NEILL KLINTER FM.
 MIDDLE DRAKE SANDS WELL DEVELOPED, BUT
 WATERBEARING. NO HYDROCARBON INDICATIONS
 AT DEEPER LEVELS EITHER.

RIG: WEST VANGUARD
 GROUP: SHELL (41.18%), STATOIL (58.82%), OCCIDENTAL'S
 INTEREST TRANSFERRED: STATOIL (8.82%), SHELL (6.18%)
 OBJECTIVE: SANDSTONES OF THE LOWER JURASSIC MIDDLE
 DRAKE FM. SECONDARY OBJECTIVES ARE SANDSTONES
 OF THE MIDDLE JURASSIC HALTENBANKEN FM. AND
 THE LOWER JURASSIC NEILL KLINTER FM.
 MIDDLE DRAKE SANDS WELL DEVELOPED, BUT
 WATERBEARING. NO HYDROCARBON INDICATIONS
 AT DEEPER LEVELS EITHER.



A/S Norske Shell (EXPLORATION AND PRODUCTION)

6508/5-1
WELL SUMMARY SHEET

AUTHOR: EPXE/23
 REPORT NO.: NSEP 87-40

ENCL. 2

DATE: SEPTEMBER 1987
 DRAW NO.: G. 2652/8