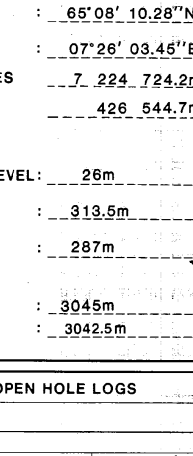


STATOIL / NORSE SHELL / ARCO
NORSKE HYDRO

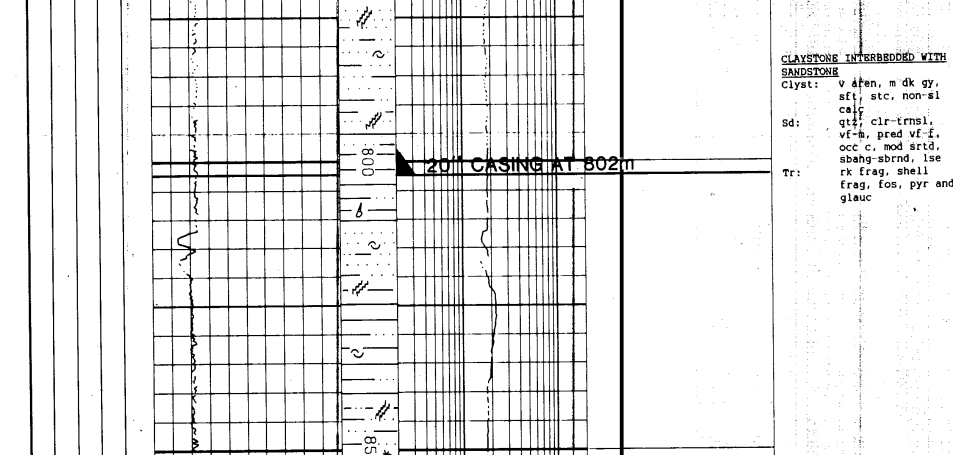


Saga Petroleum a.s.
Composite Well Log
Well 6507/11-4

SCALE 1:600 1:300 1:150 1:75 1:37.5	COUNTRY NORWAY AREA HALTENANNE OPERATOR SAGA PETROLEUM A/S LICENCE 282 RIG TAKEN OVER BY THE LICENCE 12.5.87 DATE SPUNDED 16.5.87 T.D. DATE 17.6.87 RIG RELEASED 25.6.87 COMPLETION STATUS P & A, DRY WELL	RIG 313.5-444 LOCATION COORDINATES LATITUDE: 65°08' 10.39"N LONGITUDE: 07°26' 03.45"E UTM COORDINATES: 7, 224, 724, 20 ELEVATION: 426, 544.7m RKB - MEAN SEA LEVEL: 28m RKB - SEA FLOOR: 313.5m TOTAL DEPTH: 3045m DEPTH TO LOGGER'S DEATH: 3042.5m	TREASURE SKGA 1:600 1:300 1:150 1:75 1:37.5
---	--	---	---

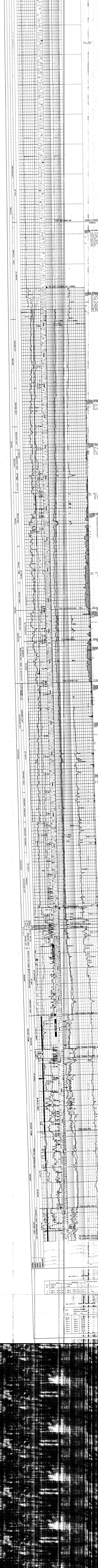
DRILLING CONTRACTOR WILHELM HELMSEN MUDLOGGING SERVICE EXPLORATION LOGGING	OPEN HOLE LOGS LOG NO. 1 LOG NO. 2 LOG NO. 3 LOG NO. 4 LOG NO. 5 LOG NO. 6 LOG NO. 7 LOG NO. 8 LOG NO. 9 LOG NO. 10 LOG NO. 11 LOG NO. 12 LOG NO. 13 LOG NO. 14 LOG NO. 15 LOG NO. 16 LOG NO. 17 LOG NO. 18 LOG NO. 19 LOG NO. 20 LOG NO. 21 LOG NO. 22 LOG NO. 23 LOG NO. 24 LOG NO. 25 LOG NO. 26 LOG NO. 27 LOG NO. 28 LOG NO. 29 LOG NO. 30 LOG NO. 31 LOG NO. 32 LOG NO. 33 LOG NO. 34 LOG NO. 35 LOG NO. 36 LOG NO. 37 LOG NO. 38 LOG NO. 39 LOG NO. 40 LOG NO. 41 LOG NO. 42 LOG NO. 43 LOG NO. 44 LOG NO. 45 LOG NO. 46 LOG NO. 47 LOG NO. 48 LOG NO. 49 LOG NO. 50 LOG NO. 51 LOG NO. 52 LOG NO. 53 LOG NO. 54 LOG NO. 55 LOG NO. 56 LOG NO. 57 LOG NO. 58 LOG NO. 59 LOG NO. 60 LOG NO. 61 LOG NO. 62 LOG NO. 63 LOG NO. 64 LOG NO. 65 LOG NO. 66 LOG NO. 67 LOG NO. 68 LOG NO. 69 LOG NO. 70 LOG NO. 71 LOG NO. 72 LOG NO. 73 LOG NO. 74 LOG NO. 75 LOG NO. 76 LOG NO. 77 LOG NO. 78 LOG NO. 79 LOG NO. 80 LOG NO. 81 LOG NO. 82 LOG NO. 83 LOG NO. 84 LOG NO. 85 LOG NO. 86 LOG NO. 87 LOG NO. 88 LOG NO. 89 LOG NO. 90 LOG NO. 91 LOG NO. 92 LOG NO. 93 LOG NO. 94 LOG NO. 95 LOG NO. 96 LOG NO. 97 LOG NO. 98 LOG NO. 99 LOG NO. 100
---	---

CASING 30" 438 24" 802 13 3/8" 1489 9 5/8" 2503	HOLE SIZE INTERVALS (in ft) 313.5-444 444-877 877-1508 1508-2518 2518-2948
--	--



AUTHOR: C. CARSTEN
APPR: T. SOLLI
DRAFTED BY: R. H. KJØLSTAD
DATE: OCT. 1987

GEOLOGICAL SYMBOLS SANDSTONE SHALE LIMESTONE GYPSUM CHALK MUDSTONE SLATE MARL CONGLOMERATE SANDSTONE SHALE LIMESTONE GYPSUM CHALK MUDSTONE SLATE MARL CONGLOMERATE	WELL LOG SYMBOLS SIDEWALL CORE GENERAL CORE (NO RECOVERY) SHOWS FLUORESCENCE SHOWS STAIN SHOWS GAS GAS ON LOGS	LITH SANDSTONE SHALE LIMESTONE GYPSUM CHALK MUDSTONE SLATE MARL CONGLOMERATE	LOG SCALES MWD (ANADRILL) 444-1489m WIRELINE LOGS (DRESSER ATLAS) 1489-3042.5m	DESCRIPTION AND REMARKS 30" CASING AT 138m 24" CASING AT 802m 13 3/8" CASING AT 1489m TOP SKIUNA GP 1380m (1354) TOP STADHALG FM 2016m (1989) TOP AUCOEN 2066m (2040) TOP LAYBY GP 2134.5m (2108.5) TOP MARA 2521.5m (2495.5) TOP NESNA 2529.5m (2503.5) TOP TOMMA FM I 2676.5m (2650.5) TOP TOMMA FM II 2732m (2706) TOP TOMMA FM III 2747.5m (2721.5) TOP LEKA FM 2866m (2840) TOP ALDRA FM 2992m (2966) TO PHLEK 3045m (3019) TO LOGGER'S DEATH 3042.5m
---	---	--	---	---



DATE 204.0 204.0 20 204.0 204.0 20 204.0 204.0 20	IN 0.000 0.000 0.000	RECOVERED 0.000 0.000 0.000	CORRECTION FACTOR 1.000 1.000 1.000	RECOVERED (CORRECTED) 0.000 0.000 0.000
---	--------------------------------------	---	---	---

DEPTH 0.0 100.0 200.0 300.0 400.0 500.0 600.0 700.0 800.0 900.0 1000.0 1100.0 1200.0 1300.0 1400.0 1500.0 1600.0 1700.0 1800.0 1900.0 2000.0 2100.0 2200.0 2300.0 2400.0 2500.0 2600.0 2700.0 2800.0 2900.0 3000.0 3042.5	LOG NO. 1 2 3 4 5 6 7 8 9 10 11 12 13 14 15 16 17 18 19 20 21 22 23 24 25 26 27 28 29 30 31 32 33 34 35 36 37 38 39 40 41 42 43 44 45 46 47 48 49 50 51 52 53 54 55 56 57 58 59 60 61 62 63 64 65 66 67 68 69 70 71 72 73 74 75 76 77 78 79 80 81 82 83 84 85 86 87 88 89 90 91 92 93 94 95 96 97 98 99 100
--	--