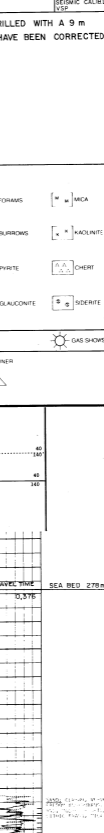


AREA: HALTENBEN I
 LICENCE: 091
 COORDINATES: 64° 45' 20.77" N, 06° 49' 21.77" E
 K.B. 22 m
 TOTAL DEPTH: 4902
 WRIEN DEPT: 4902
 CONTRACTOR: SAG
 RIG STATUS: PLUGGED & ABANDONED
 RELEASE DATE: 15 AUGUST 04
 PREPARED BY: C. BAKER DATE: 1/1/05
 CASING DATA: 3" 1/2" 2148, 2" 7/8" 1746, 1 3/4" 1470

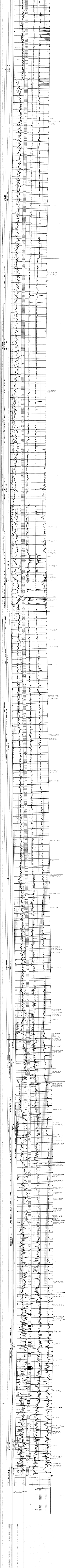


LOGS RUN	CONTRACTOR	SCHLUMBERGER
3" 1/2" 2148	LOT 1.71	VELOCITY SURVEY: VSP - CHECK SHOTS
2" 7/8" 1746	LOT 1.97 (1.87 before borehole)	VSP AT 50' INTERVAL FROM 7000 - 2820
1 3/4" 1470	LOT 2.16	CHECK SHOTS FROM 8 LEVELS INTERVAL
		CHECK SHOTS FROM 10 LEVELS INTERVAL
		2700 - 619

COMMENTS: DEPTH CONTROL. THE INTERVAL 978 - 286 m WAS DRILLED WITH A 9 m PIPE TALLY ERROR. ALL SAMPLE DESCRIPTIONS ARE 9 m DEEP. THESE HAVE BEEN CORRECTED TO THE 107.5000 LOG FOR THIS PRESENTATION.

LITHOLOGICAL SYMBOLS

COAL	SAND	GRAVEL	CLAY	SHALE	SLT. SHALE	SLT. SAND	SLT. CLAY	SLT. GRAVEL	SLT. SAND	SLT. CLAY	SLT. GRAVEL
CLAYSTONE	SANDSTONE	GRAVELLITE	CLAYSTONE	SHALE	SLT. SHALE	SLT. SAND	SLT. CLAY	SLT. GRAVEL	SLT. SAND	SLT. CLAY	SLT. GRAVEL
CLAYSTONE	SANDSTONE	GRAVELLITE	CLAYSTONE	SHALE	SLT. SHALE	SLT. SAND	SLT. CLAY	SLT. GRAVEL	SLT. SAND	SLT. CLAY	SLT. GRAVEL



DEPTH (m)	RESISTIVITY (ohm-m)	GAMMA RAY (API)
0.00	178.2	47.2
1.00	178.2	47.2
2.00	178.2	47.2
3.00	178.2	47.2
4.00	178.2	47.2
5.00	178.2	47.2
6.00	178.2	47.2
7.00	178.2	47.2
8.00	178.2	47.2
9.00	178.2	47.2
10.00	178.2	47.2
11.00	178.2	47.2
12.00	178.2	47.2
13.00	178.2	47.2
14.00	178.2	47.2
15.00	178.2	47.2
16.00	178.2	47.2
17.00	178.2	47.2
18.00	178.2	47.2
19.00	178.2	47.2
20.00	178.2	47.2
21.00	178.2	47.2
22.00	178.2	47.2
23.00	178.2	47.2
24.00	178.2	47.2
25.00	178.2	47.2
26.00	178.2	47.2
27.00	178.2	47.2
28.00	178.2	47.2
29.00	178.2	47.2
30.00	178.2	47.2
31.00	178.2	47.2
32.00	178.2	47.2
33.00	178.2	47.2
34.00	178.2	47.2
35.00	178.2	47.2
36.00	178.2	47.2
37.00	178.2	47.2
38.00	178.2	47.2
39.00	178.2	47.2
40.00	178.2	47.2
41.00	178.2	47.2
42.00	178.2	47.2
43.00	178.2	47.2
44.00	178.2	47.2
45.00	178.2	47.2
46.00	178.2	47.2
47.00	178.2	47.2
48.00	178.2	47.2
49.00	178.2	47.2
50.00	178.2	47.2