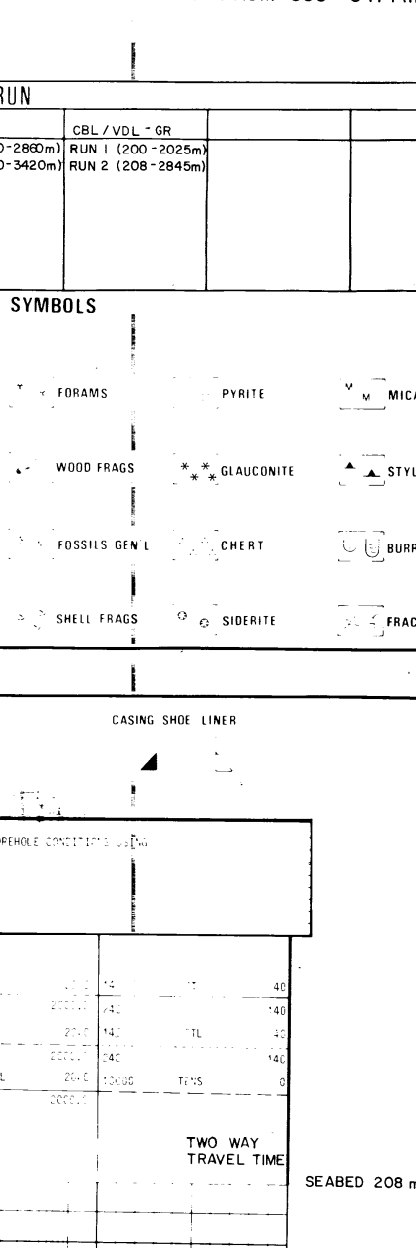


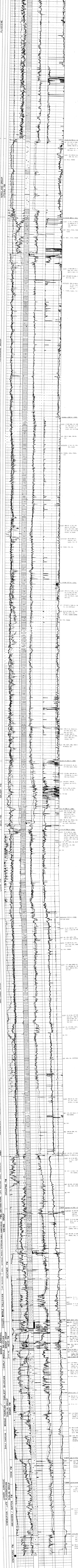
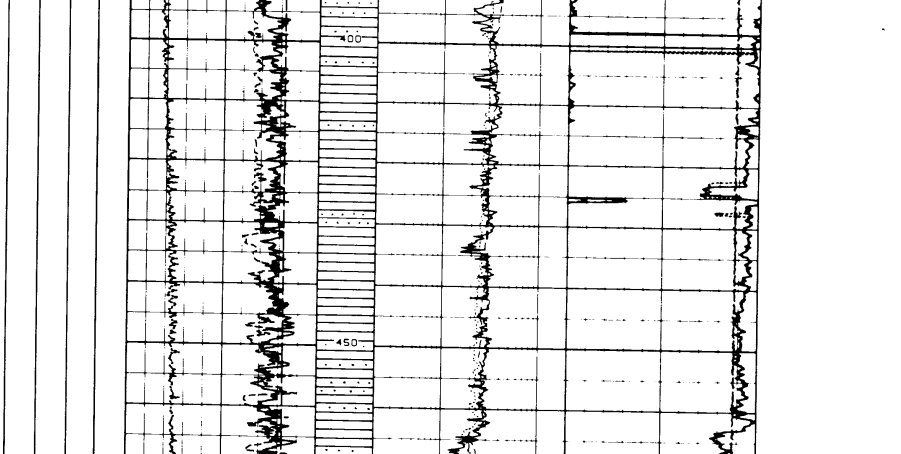
UNION OIL / N-HYDRO / PETROCAN / DEMINEX 30/3 - 3 COMPLETION LOG Scale 1:500

COORDINATES: 60° 46' 11.44" N 02° 57' 05.58" E
WATER DEPTH: 22 m
TOTAL DEPTH: 3419 m
SPUD DATE: APRIL 2, 1983
WELL RELEASE DATE: MAY 21, 1983
WELL STATUS: PLUGGED AND ABANDONED
CONTRACTOR: ROSS ISLE
GEOLOGISTS: C. BAKER, S. BJERNES, P. CLUNTS, T. KRISTENSEN, S. SVINDAL
PREPARED BY: MORVIK
APPROVED BY: E. UNDERBILD
DATE: SEPT 83



LOGS RUN table with columns: RUN NO., RUN DATE, RUN TIME, RUN DEPTH, RUN TYPE.

LITHOLOGIC SYMBOLS table listing various geological symbols and their corresponding lithological descriptions.



Formation Permeability table with columns: Form., Depth (m), Permeability (mD), Notes.