



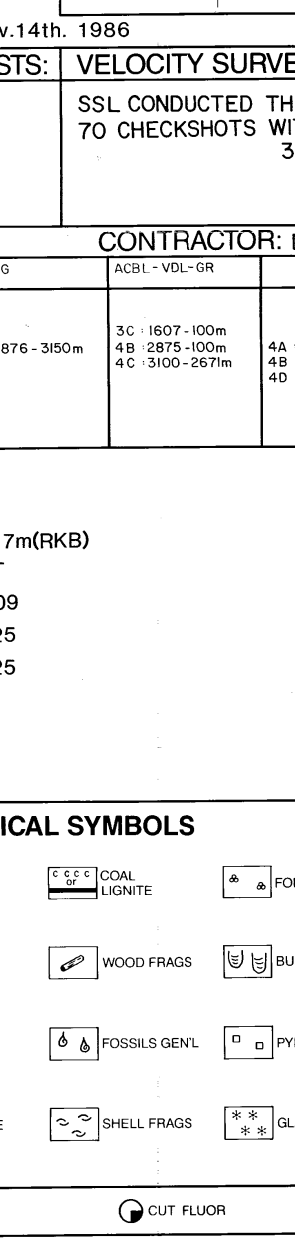
15/12-5
COMPLETION LOG
 Scale 1:500

BETA - SENTRAL

REGASIFIKAT
 OLJEDIREKTORATET

AREA: NORTH SEA
 COORDINATES: 038
 58°04' 53.36" N
 01° 54' 53.24" E

K.B.: 22m
 WATER DEPTH: 83.5m
 TOTAL DEPTH: 315.0m
 DEEPEST FORM. PEN.: SKAGERRAK FM.
 SPUD DATE: 12.03.86
 RIG RELEASE DATE: 04.05.86
 WELL STATUS: PLUGGED AND ABANDONED
 RIG: "ROSS ISLE"
 CONTRACTOR: ROSS DRILLING
 GEOLOGISTS: T.F. KRISTENSEN, P. FURUMYR
 D.A.L.M., M. KINGSLEY
 PREPARED BY: A.M. BRAATEN DATE: Nov. 14th. 1986



CASING DATA: 217m
 20" 217-267m
 16" 267-288m
 13 3/8" 288-297m
 9" 297-315m

LEAK OFF TESTS: 1.37 S.G.
 217-267m
 1.72 S.G.
 267-288m
 2.18 S.G.
 288-315m

VELOCITY SURVEY: SSL CONDUCTED THE VSP TO CHECKSHOTS WITH LEVELS FROM 315m - 285m (RKB)

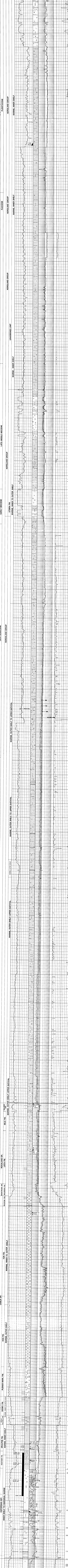
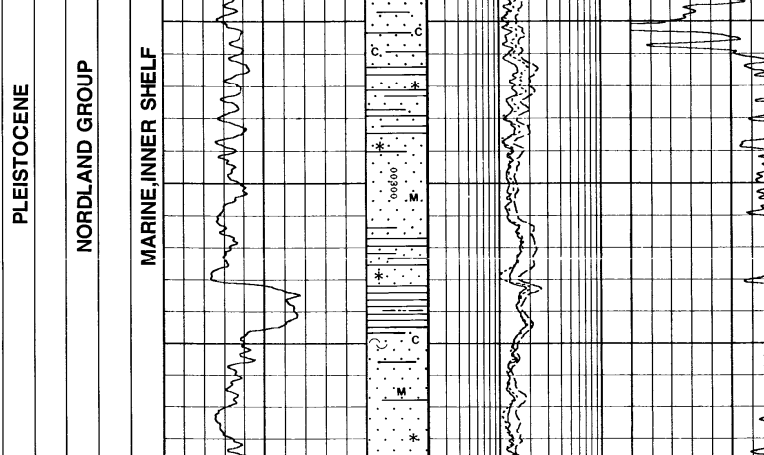
LOGS RUN

COL.	ONL.	GR.	CAI.	M.L.	GR.	DPL.	LOG.	ACTH.	VOL.	GR.	FMT.	COREGR.	
1A	217-267m							3C	1607-100m			3A	2380-2381
1B	1607-288m							4B	2875-100m			4A	2879-314
1C	1607-288m							4C	3100-287m			4D	2933-2950m
4D	2875-315m												

COMMENTS:
 NO WIRELINE LOGS IN TOP SECTION: 130m - 217m(RKB)
 FOR FMT RESULTS, SEE COMPLETION REPORT
 WELL LOCATION: SEISMIC LINE ST 8502 SP109
 CORE GUN RECOVERY: RUN 3A : REC. 25 OF 25
 RUN 4A : REC. 20 OF 25

LITHOLOGICAL SYMBOLS

CONGLOMERATE	SHALE	MARL	LOCAL	FORAMS	MICA
SAND SANDSTONE	LIMESTONE	TUFF	WOOD FRAGS	BURROWS	NAUCLITE
SILT SANDSTONE	CHALK	SALT GENL.	FOSSILS GENL.	PYRITE	CHERT
CLAY SANDSTONE	DOLOMITE	ANHYDRITE	SHELL FRAGS	GLAUCONITE	SIDERITE



FORMATIONS:
 TERTIARY: EARLY OLIGOCENE, LATE OLIGOCENE, TERTIARY, QUATERNARY
 CRETACEOUS: UPPER, MIDDLE, LOWER