



# statoil/ESSO/NORSK HYDRO/SAGA DEMINEX/HISPANOIL

## COMPLETION LOG: 7119/12-2

Scale 1:500

COORDINATES: 71°00'51.81"N  
19°58'20.81"E

K.B.: 25m

WATER DEPTH: 180.5m

TOTAL DEPTH: 1902m

DEEPEST FORM. PEN.: TRIASSIC

SPUD DATE: APRIL 16th 1981

RIG RELEASE DATE: JUNE 26th 1981

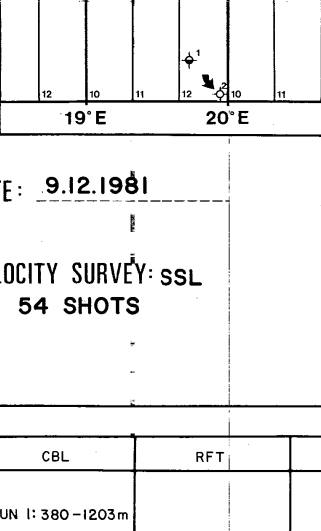
WELL STATUS: PLUGGED AND ABANDONED

RIG: ROSS RIG

CONTRACTOR: ROSS DRILLING COMPANY A.S.

GEOLOGISTS: K.H.JAKOBSON, T.F.KRISTESEN, S.I.EIDE

PREPARED BY: O.V.GREINER



CASING DATA: 30" at 250m  
20" at 389m  
16" at 590m  
13 3/8" at 1204m  
9 5/8" at 1885m

Leak off: 1.31 g/cc  
2.14 g/cc  
2.18 g/cc  
equiv. mud weight

VELOCITY SURVEY: SSL  
54 SHOTS

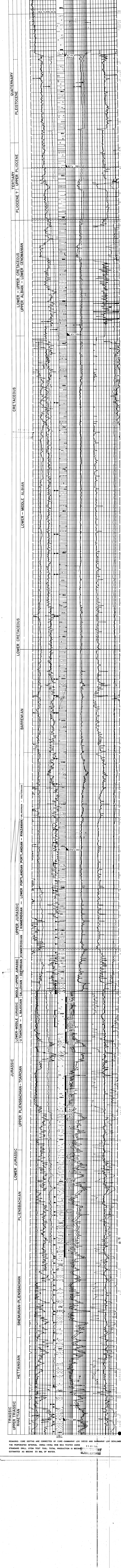
ISF/SONIC-GR-SP	FDC-GR-CAL	HOT	CST	CBL	RFT
RUN 1: 256-468m	RUN 1: 256-468m	RUN 1: 1203-1902m	RUN 1: 670-1252m	RUN 1: 380-1203m	2 RUNS: 1972m-TD.
RUN 2: 389-590m	FDC/CNL-GR-CAL		RUN 2: 1241-1898m	RUN 2: 600-1386m	
4: 1203-1898m	RUN 2: 389-590m				
ISF/SONIC-MSP	S: 300-5273m				
RUN 5: 1203-1902m	LOT/CNL-GR				
	RUNS: 1203-1902m				

### LITHOLOGIC SYMBOLS

SAND SANDSTONE	LIMESTONE	ANHYDRITE	DRY DRAMS	PHYRITE	MICA
SILT SILTSTONE	CHALK	COAL LIGNITE	WOOD FRAGS	BLAUCONITE	STYLOLITES
CLAY CLAYSTONE	DOLOMITE	TUFF	FOSSILS GEN L	CHERT	BURROWS
SHALE	MARL	SALT	SHELL FRAGS	SIDERITE	FRACTURES

SHOW OR STAIN: HYDROCARBON CUT, FLUORESCENCE, GAS SHOW

SIDEWALL CORES: CORE NO., CORE REC



REMARKS: CORE DEPTHS ARE CORRECTED BY CORE-GAMMARAY LOG (GECO) AND GAMMARAY LOG (SCHLUMBERGER).

STANDARD DRILL STEM TEST TOOL. TOTAL PRODUCTION IS BEING ESTIMATED AS BEING 33 BBL OF WATER.

8 JUN 82