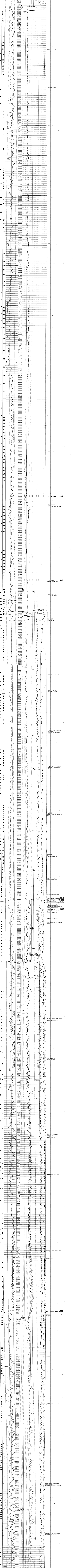
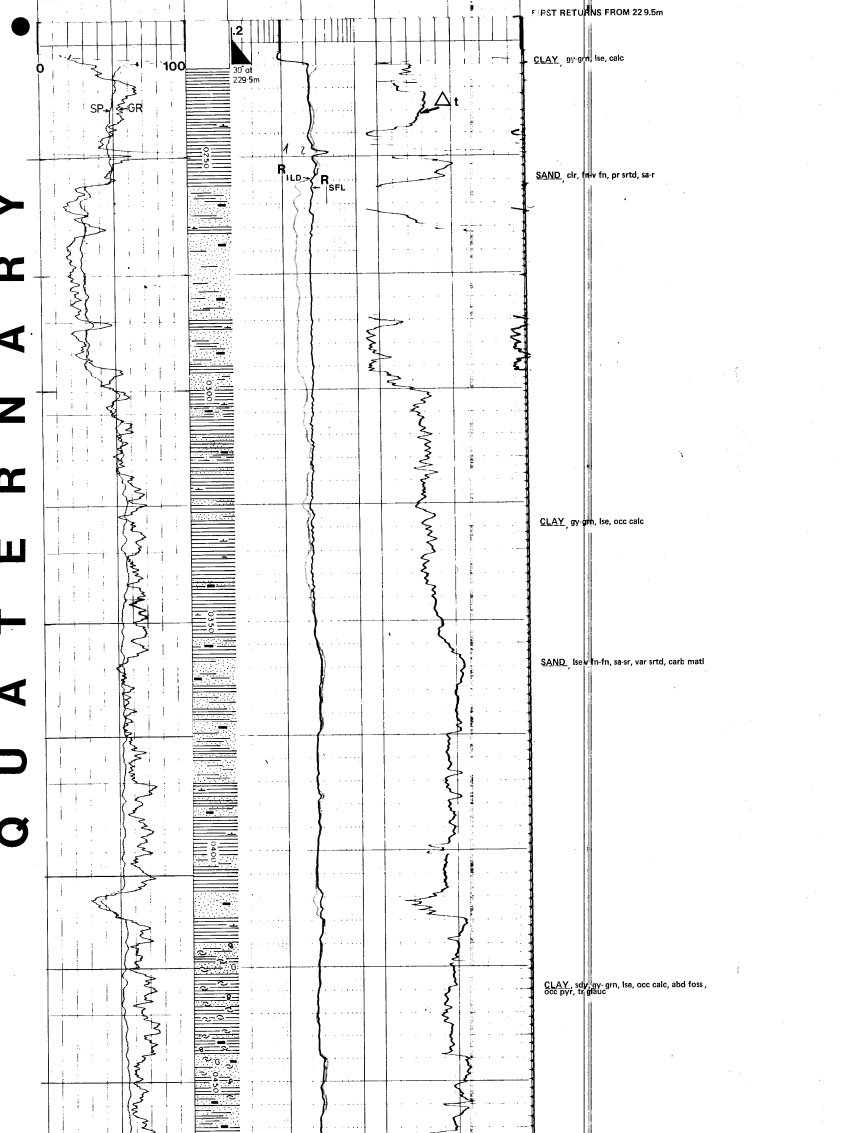


MOBIL EXPLORATION NORWAY INC. WELL 33/12-5 STATEFJORD FIELD FINAL COMPOSITE LOG

CO-ORDINATES: BY 11 05 57° N, BY 05 03 52° E, ELEVATION: -4574 m, SEA FLOOR: -143 m, RIG: NORSKALD, RIG START DATE: OCTOBER 1975, RIG RELEASE: 21 FEBRUARY 1976, WELL STATUS: FLUGGED AND ABANDONED AS DRY



SPONTANEOUS POTENTIAL (mV), GAMMA RAY (API units), DEEP RESISTIVITY (ohm-m), CONDUCTIVITY (ohm-cm), and other log data at the bottom of the well log.