

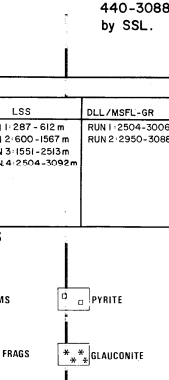
COMPLETION LOG

statoil/ESSO/NORSK HYDRO/SAGA/ DEMINEX/HISpanoil

COMPLETION LOG 7119/12-1

Scale 1:500

COORDINATES: 71° 05' 08.00" N, 19° 47' 49.29" E, 25 m depth, 2008 m TVD, DEEPEST FORM. PEN.: LOWER JURASSIC, SPUD DATE: 14 JUNE 1980, RIG RELEASE DATE: 15 OCTOBER 1980, WELL STATUS: P and A - OIL SHOWS, CONTRACTOR: ROSS DRILLING CO. A/S, GEOFRACTURIST: TFX, TGG, EU, RML, FL, D, Archer, S, Lawrence, PREPARED BY: O.V. GREINER, S.O. SYRSTAD, DATE: 1 MARCH 1981



CASING DATA: 30" at 287 m, 20" at 600 m, 13 1/2" at 1551 m, 9" at 2504 m.

VELOCITY SURVEY: 100 checks, levels from 440-3088m conducted by SSL.

LOGS RUN

Table with columns: LOG, FDCOR, HOT, OIL, LSS, DOL-MGR-6F, CST. Lists various log runs and their depths.

LITHOLOGIC SYMBOLS

Legend for lithologic symbols including Sandstone, Limestone, Claystone, etc.

Table for well logs: SPONTANEOUS POTENTIAL, RESISTIVITY, GAMMA RAY, INTERVAL TRANSIT TIME.

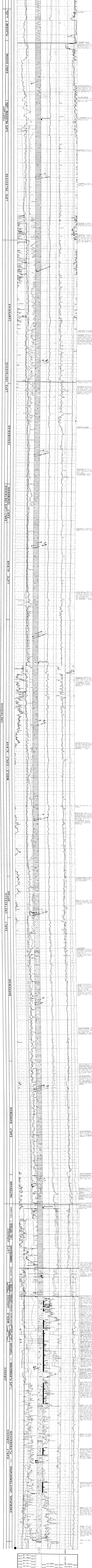


Table with columns: NAME, UNIT, VALUE, PARAMETERS, NAME, UNIT, VALUE. Lists well parameters like TVD, CASING, etc.