

AMOCO NORWAY OIL COMPANY

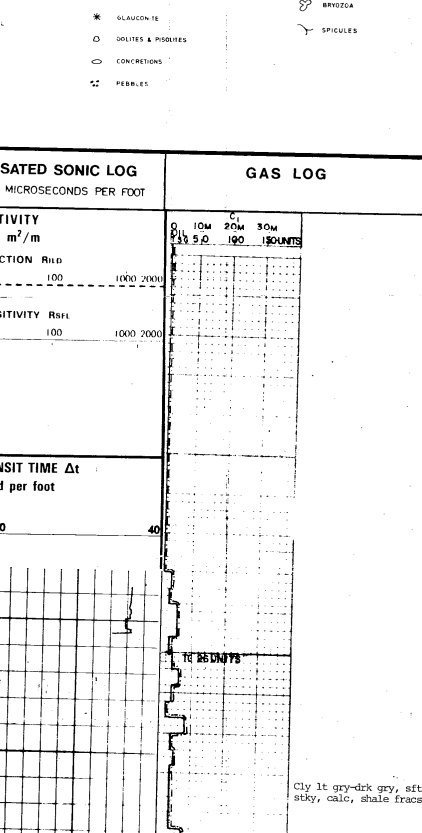
COMPOSITE WELL LOG: 2/8-11

1-FEB1977 REGISTERED OLIEDIREKTORATET

Table with well details: AREA: NORTH SEA VALHALL, LICENSE: 006, LOCATION: LAT: 56°16'56.15"N, LONG: 3°22'16.68"E, RIG: ROSS RIG, AMOCO ENGINEERS: H. BERGSLAND, AMOCO GEOLOGISTS: T. HALBERG

OPERATIONAL SYMBOLS: CASING SEAT, CORE INTERVAL, PERFORATED INTERVAL, etc.

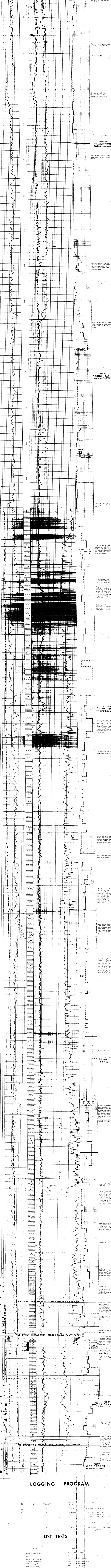
SHOWS: OL, FA, etc. CASING RECORD: 30" 168m 544', 20" 377m 1335', etc.



LITHOLOGY, MINERALOGY & PALAEOLOGY SYMBOLS

Table of lithology symbols: SANDSTONE, CLAY, SHALE, etc.

GAMMA RAY LOG, BOREHOLE COMPENSATED SONIC LOG, GAS LOG



LOGGING PROGRAM

Table with logging program details: Run No., Hole Size, Interval, etc.

DST TESTS

Table with DST test results: Test No., Flow Rate, Pressure, etc.