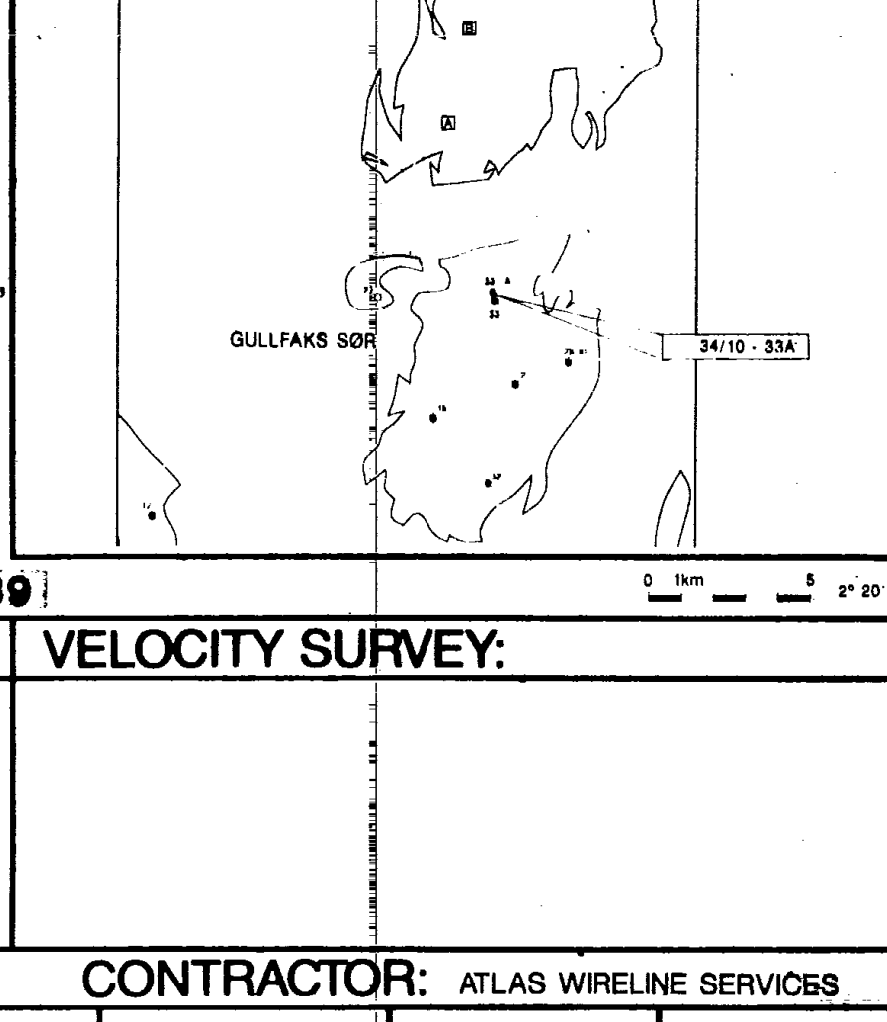


DIGITAL WIRELINE LOGS PACKAGE
 1994
 This image may not be used or reproduced
 without written permission from
 SIMON PETROLEUM TECHNOLOGY

COMPLETION LOG

NORSK HYDRO / SAGA PETROLEUM **STATOIL**
34/10-33A **COMPLETION LOG**
Scale 1:500

AREA: **NORTHERN NORTH SEA**
 LICENCE: **PL 050**
 COORDINATES: **61°37' 34.44" N**
02°12' 57.10" E
 K.B.: **29m**
 WATER DEPTH: **134m**
 TOTAL DEPTH: **3851m**
 DEEPEST FORM. PEN.: **RANNOCH FM**
 SPUD DATE: **15.12.88**
 RIG RELEASE DATE: **03.02.89**
 WELL STATUS: **TEMPORARILY PLUGGED AND ABANDONED, OIL & GAS WELL**
 RIG: **WEST DELTA**
 CONTRACTOR: **SMEDVIG**
 GEOLOGISTS: **BJERKENES, ØSTBY, LAW, GRAUE, GAHLIA, GREVE.**



PREPARED BY: **B.LAASTAD** DATE: **JUNE-89**

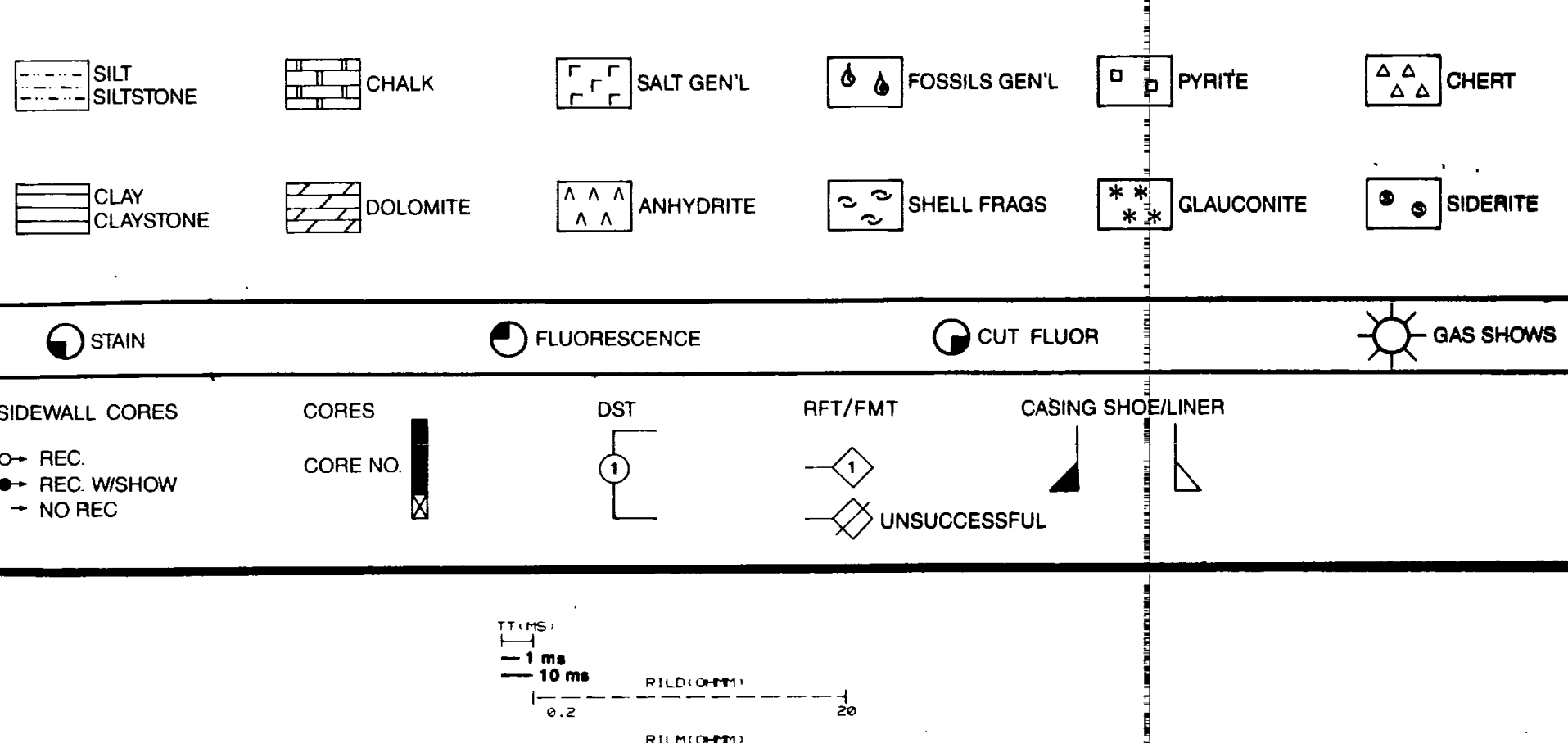
CASING DATA: **LEAK OFF TESTS: VELOCITY SURVEY:**

30" at 229m		
16" at 459m		1.43 SG
13 3/8" at 1828m		1.53 SG
9 5/8" at 2829m	(window)	1.83 SG
7" at 3340m	(Top 2589m)	

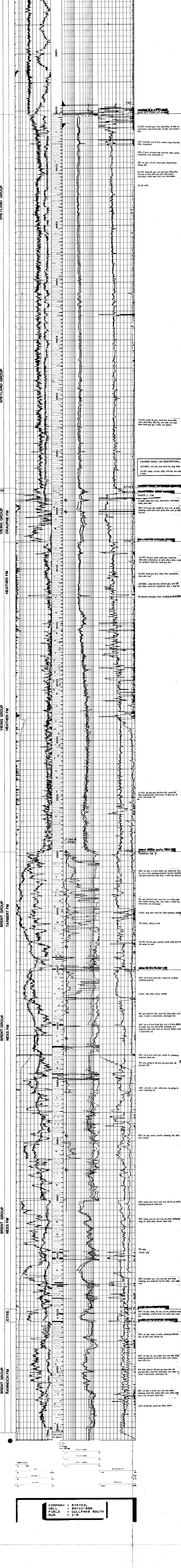
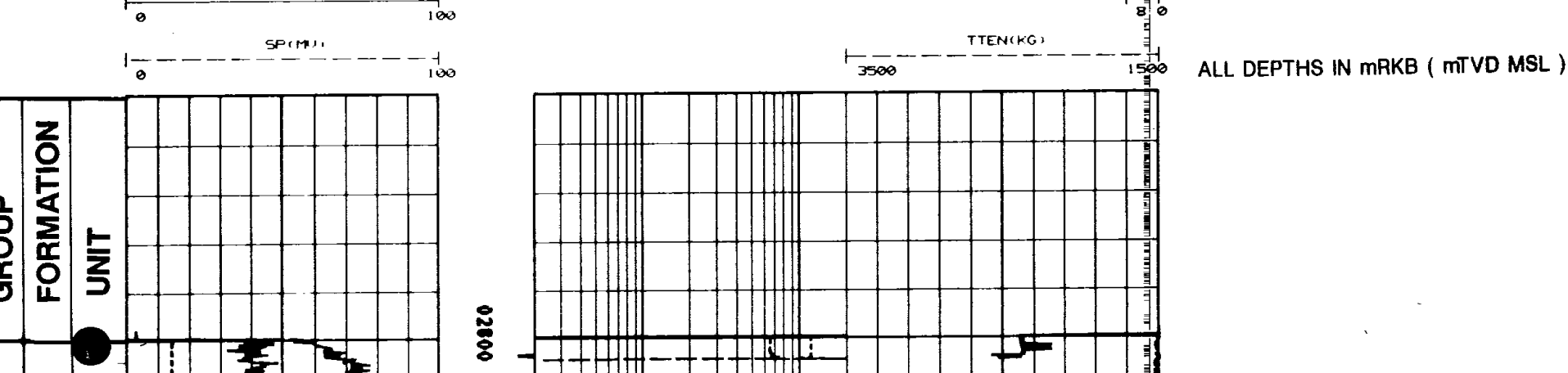
16" SN - GR(MWD)	DPL - ACL - GR	CDL - CN - SL	DLL - MLL - GR	FMT - GR	CBL-VOL - CCL-GR
RUN 1 - 13 2674 - 3740m	RUN 1A: 2703 - 3852.5m	MISRUN RUN 1B: 2703 - 3213m	RUN 1A: 2703 - 3217m RUN 1B: MISRUN	RUN 1A: MISRUN RUN 1B: 3039 - 3041m RUN 1C: MISRUN RUN 2A: MISRUN	RUN 2A: 2595 - 3330m

COMMENTS:
 1. The well was drilled as a sidetrack from well 34/10-33 with kick-off point at 2689m RKB.
 2. The logging program was not completed due to hole problems in the Heather Formation.
 3. No biostratigraphical breakdown was done.
 4. The hydrocarbon-water contact is estimated at 3445m MSL
 5. Maximum deviation was 48.8° azimuth 336.3° at 3282m MD
 Deviation at TD was approximately 39°, azimuth 325°

LITHOLOGICAL SYMBOLS



SIDEWALL CORES: REC, REC W/SHOW, NO REC
 CORES: CORE NO, DST, RFT/FMT, CASING SHOELINER, UNSUCCESSFUL



COMPANY: **STATOIL**
 WELL: **34/10-33A**
 FIELD: **GULLFAKS SOUTH**
 RUN: **1-A**