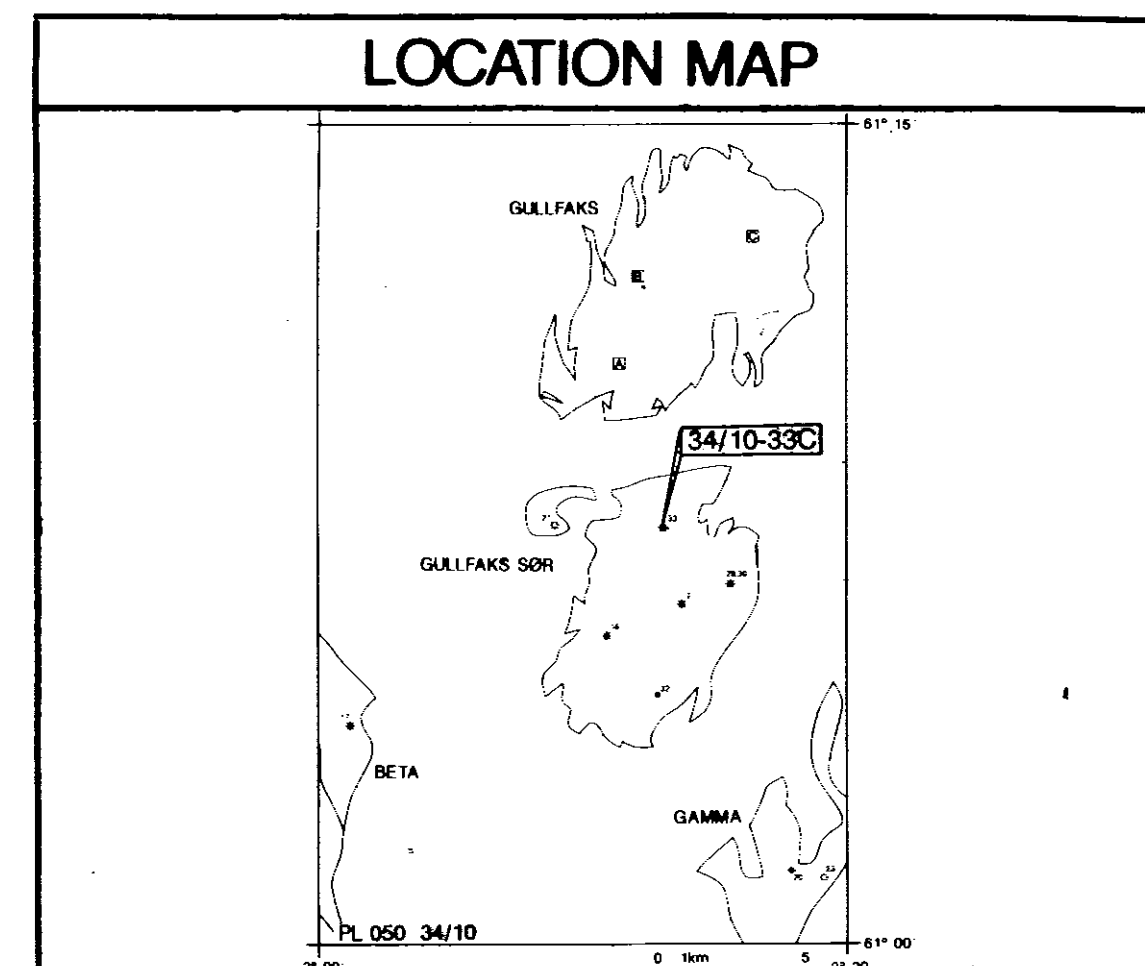


STATOIL
NORSK HYDRO/SAGA PETROLEUM
34/10-33C WELL **COMPLETION LOG** PROJECT STRUCTURE
Scale 1:500 **GULLFAKS SØR**

AREA: NORTHERN NORTH SEA
 LICENCE: PL 050
 COORDINATES: 61° 07' 34.44" N
 02° 12' 57.10" E

K.B.: 23m
 WATER DEPTH: 134m
 TOTAL DEPTH: 3752m
 DEEPEST FORM. PEN.: DRAKE FM.
 SPUD DATE: 10.07.89
 RIG RELEASE DATE: 16.09.89
 WELL STATUS: TEMPORARY PLUGGED AND ABANDONED, OIL AND GAS WELL
 RIG: DEEP SEA BERGEN
 CONTRACTOR: ODRELL DRILLING
 GEOLOGISTS: INGDAHL, SVINDLAND



PREPARED BY: B. LAASTAD DATE: FEB. -90
 CASING DATA: LEAK OFF TESTS: VELOCITY SURVEY:
 30" at
 20" at
 16" at
 13 3/8" at 3272m (kick off point) 1,70 (FIT)
 9 5/8" at 3751m

LOGS RUN CONTRACTOR: ATLAS WIRELINE SERVICES

GR (MWD)	DIFL-ACL-CDL-CN-GR	FMT-HP-GR	DIPS-GR	SWC-GR	CLL-VDL-GR
RUN 1-5: 3281 - 3752m	RUN 1A: 3271.5 - 3755.2	RUN 1A: 3290.5 - 3507.5m RUN 1B: 3281.5 - 3658.5m	RUN 1A: 3285 - 3757m	RUN 1A: 3350 - 3612m	RUN 2A: 3160 - 3765,5m

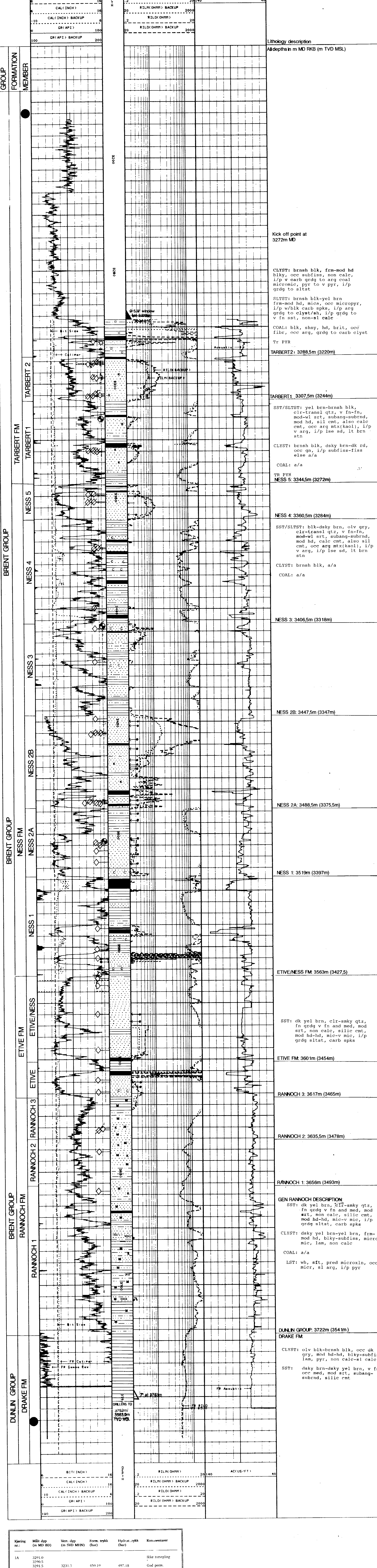
COMMENTS:
 1. This well was drilled as a sidetrack from well 34/10-33B.
 2. This well was reclassified by NPD at 06.00 hrs. 01.08.89 from an appraisal well to a test well, and consequently changed name to 34/10-T1.
 For information on the production testing of the well, please refer to "Sluttrapport 34/10-T1".
 3. The gas-oil contact estimated at 3240 ± 5m TVD MSL in the Ness Fm.
 4. The oil-water contact estimated at 3460 ± 20m TVD MSL in the Etive/Rannoch Fm.
 5. No biostratigraphical breakdown was done in this well, please refer to well 34/10-33.

LITHOLOGICAL SYMBOLS

CONGLOMERATE	SHALE	MARL	COAL LIGNITE	FORAMS	MICA
SAND SANDSTONE	LIMESTONE	TUFF	WOOD FRAGS	BURROWS	KAOLINITE
SILT SILTSTONE	CHALK	SALT GEN'L	FOSSILS GEN'L	PYRITE	CHEERT
CLAY CLAYSTONE	DOLOMITE	ANHYDRITE	SHELL FRAGS	GLAUCONITE	SIDERITE

STAIN FLUORESCENCE CUT FLUOR GAS SHOWS

SIDEWALL CORES CORES DST RFT/FMT CASING SHOE/LINER
 ○ REC ● REC WSHOW - NO REC CORE NO



Kjøring nr.	Mål dyp (m MD BD)	Vert. dyp (m SVD MIN)	Form. trykk (bar)	Hydrat. trykk (bar)	Kommentarer
1A	3291.0				Ikke foretagning
	3290.5				
	3291.5	3231.5	450.10	497.18	God perm.
	3297.0				Ikke foretagning
	3297.5	42.6.2	150.72	497.5	God perm.
	3300.0				Ikke foretagning
	3300.5				
	3305.0				
	3305.5	6261.5		541.05	Tr. sementasjon
	3310.5				Ikke foretagning
	3349.0				
	3349.5				
	3352.5	3276.0	152.5	503.74	God perm.
	3353.0				
	3372.5				
	3390.5				
	3409.0	3110.0	155.2	510.05	God perm.
	3412.0	13.6.1.5	152.71	512.25	
	3419.0	3448.1	57.34	515.50	
	3425.0				Ikke foretagning
	3426.5				
	3427.0				
	3428.5				
	3430.0				
	3431.0				
	3432.0				
	3433.0				
	3434.0				
	3435.0				
	3436.0				
	3437.0				
	3438.0				
	3439.0				
	3440.0				
	3441.0				
	3442.0				
	3443.0				
	3444.0				
	3445.0				
	3446.0				
	3447.0				
	3448.0				
	3449.0				
	3450.0				
	3451.0				
	3452.0				
	3453.0				
	3454.0				
	3455.0				
	3456.0				
	3457.0				
	3458.0				
	3459.0				
	3460.0				
	3461.0				
	3462.0				
	3463.0				
	3464.0				
	3465.0				
	3466.0				
	3467.0				
	3468.0				
	3469.0				
	3470.0				
	3471.0				
	3472.0				
	3473.0				
	3474.0				
	3475.0				
	3476.0				
	3477.0				
	3478.0				
	3479.0				
	3480.0				
	3481.0				
	3482.0				