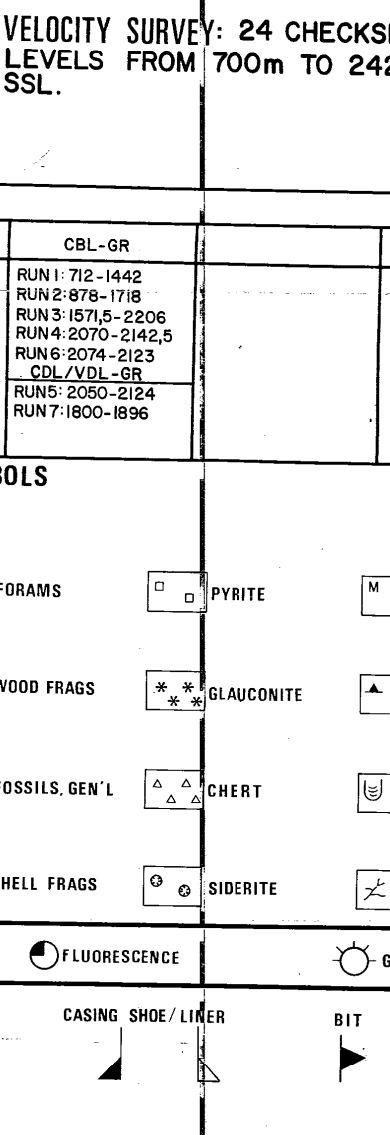


**statoil / NORSK HYDRO/SAGA PETR-**  
**34/10-9**  
**COMPLETION LOG**  
 Scale: 1:500

12 JAN 1981  
**REGISTRERT**  
**OLJESEKRETORATET**

COORDINATES: 61°12'55.34" N  
 02°15'00.53" E  
 K.B.: 25m  
 WATER DEPTH: 202m  
 DEEPEST FORM. PEN.: STATFJORD  
 RIG DATE: PHASE I MARCH 24th 1980/PHASE II MAY 29th 1980  
 RIG RELEASE DATE: PHASE I MAY 19th 1980/PHASE II JULY 3rd 1980  
 WELL STATUS: PLUGGED AND ABANDONED  
 RIG: ROSS RIG/DEEP SEA SAGA  
 CONTRACTOR: ROSS DRILLING CO./ODFJELL DRILLING CO.  
 GEOLOGISTS: H.NYGÅRD, J.M.ØSTBY, K.H.JAKOBSSON, A.HAGE  
 PREPARED BY: M.HELLE / B.RASMUSSEN DATE: 29-11-80



CASING DATA:  
 30' at 288m  
 20' at 830m  
 13 3/4' at 1441m  
 9 5/8' at 1715m  
 7" liner at 2199m

VELOCITY SURVEY: 24 CHECKSHOTS,  
 LEVELS FROM 700m TO 2420m BY  
 SSL.

**LOGS RUN**

ISF/BNIC-GR RUN1 28-841.5 RUN2 831-1456 RUN3 1461-1783	FDC-GR-CAL RUN1 831-1456 RUN2 1442-1725 FDC-GR-CAL RUN3 1783-2202 RUN4 2202-2426	DLL-MDFL-GR RUN1 1900-2202 HOT RUN2 2202-2428 RUN3 2202-2428 RUN4 2202-2428	GEOP RUN1 2350-2428	CRL-GR RUN1 712-1456 RUN2 878-1718 RUN3 878-2202 RUN4 2202-2426 RUN5 2074-2123 RUN6 2000-2124 RUN7 1400-1806
---	---	--	------------------------	---

**LITHOLOGIC SYMBOLS**

SAND SANDSTONE	AMYGDALITE	FORAMS	PIRYTITE	MICA
SILT SANDSTONE	COAL LIGHTWEIGHT	WOOD FRAGS	GLAUCONITE	STYCOLITES
CLAY SANDSTONE	TUFF	FOSSILS GEN'L	CHERT	BURROWS
SHALE	SALT	SHELL FRAGS	SIDERITE	FRACTURES

**SPONTANEOUS POTENTIAL** (millivolts)  
**RESISTIVITY** (ohms-m)  
**GAMMA RAY** (api units)  
**INTERVAL TRANSIT TIME Δt** (microsecond per foot)

**SYSTEM SERIES-STAGES GROUP FORMATION MEMBER**

**QUATERNARY**  
 PLEISTOCENE

**TERTIARY**  
 PLOCENE

**MIOCENE**  
 NORDLAND GROUP

**EOCENE**  
 HORDALAND GROUP

**EARLY EOCENE**  
 BALDER FM

**PALEOCENE**  
 ROGALAND GROUP

**LISTA FM**

**JURASSIC**  
 BRENT RANNOCH UNIT 2

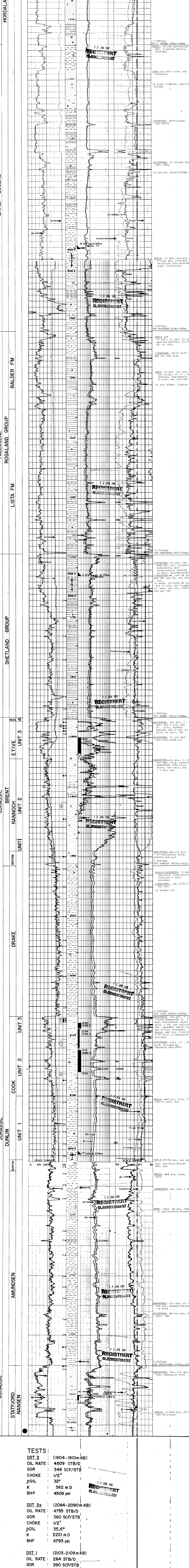
**DRAKE**

**JURASSIC**  
 DUNLIN UNIT 1

**JURASSIC**  
 COOK UNIT 2

**JURASSIC**  
 AMUNDSEN

**JURASSIC**  
 STATFJORD NÅSEN



**TESTS:**  
 DST 3 : (1904-1910m KB)  
 OIL RATE : 4509 STB/D  
 GOR : 348 SCF/STB  
 CHOKE : 1/2"  
 POIL : 32"  
 K : 3520 m D  
 BHP : 4609 psi

DST 2a : (2084-2090m KB)  
 OIL RATE : 4755 STB/D  
 GOR : 360 SCF/STB  
 CHOKE : 1/2"  
 POIL : 35.6"  
 K : 2221 m D  
 BHP : 4793 psi

DST 1 : (2103-2109m KB)  
 OIL RATE : 264 STB/D  
 GOR : 390 SCF/STB  
 CHOKE : 20/64"  
 POIL : 34.2"  
 K : 4820 m D  
 BHP : 2,850psi

FIT 2 : (1840m KB)  
 OIL SAMPLE POIL 31.90°

FIT 1 : (2132m KB)  
 FORMATION WATER AND  
 MUD FILTRATE PH=9,  
 NaCl = 17,500ppm

**REF DATA**

KB	RES.	PRES.
1830	1817	4646
1842	1817	4646
1854	1817	4646
1866	1817	4646
1878	1817	4646
1890	1817	4646
1902	1817	4646
1914	1817	4646
1926	1817	4646
1938	1817	4646
1950	1817	4646
1962	1817	4646
1974	1817	4646
1986	1817	4646
1998	1817	4646
2010	1817	4646
2022	1817	4646
2034	1817	4646
2046	1817	4646
2058	1817	4646
2070	1817	4646
2082	1817	4646
2094	1817	4646
2106	1817	4646
2118	1817	4646
2130	1817	4646
2142	1817	4646
2154	1817	4646
2166	1817	4646
2178	1817	4646
2190	1817	4646
2202	1817	4646
2214	1817	4646
2226	1817	4646
2238	1817	4646
2250	1817	4646
2262	1817	4646
2274	1817	4646
2286	1817	4646
2298	1817	4646
2310	1817	4646
2322	1817	4646
2334	1817	4646
2346	1817	4646
2358	1817	4646
2370	1817	4646
2382	1817	4646
2394	1817	4646
2406	1817	4646
2418	1817	4646
2430	1817	4646

**REF DATA**

KB	RES.	PRES.
206	206	4825
208	206	4825
210	206	4825
212	206	4825
214	206	4825
216	206	4825
218	206	4825
220	206	4825
222	206	4825
224	206	4825
226	206	4825
228	206	4825
230	206	4825
232	206	4825
234	206	4825
236	206	4825
238	206	4825
240	206	4825
242	206	4825
244	206	4825
246	206	4825
248	206	4825
250	206	4825
252	206	4825
254	206	4825
256	206	4825
258	206	4825
260	206	4825
262	206	4825
264	206	4825
266	206	4825
268	206	4825
270	206	4825
272	206	4825
274	206	4825
276	206	4825
278	206	4825
280	206	4825
282	206	4825
284	206	4825
286	206	4825
288	206	4825
290	206	4825
292	206	4825
294	206	4825
296	206	4825
298	206	4825
300	206	4825