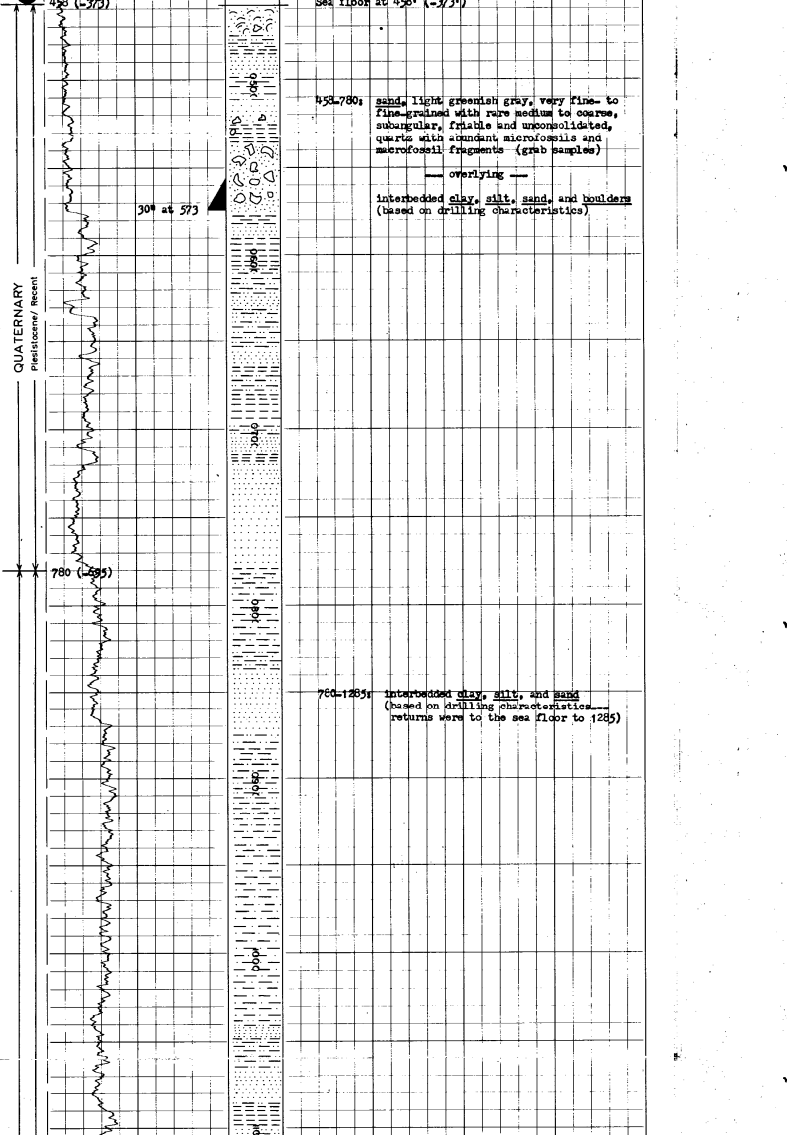


ESSO EXPLORATION
 NORWAY INC.
 COMPLETION LOG 15/01/83
 0821-4528
 ESSO 16/1-1

Coordinates: 58° 59' 18" N 02° 02' 03" E
 Elevation: 87 - 85 feet
 Classification: Dry Well - Field Wildcat Completion: 10 December 1987
 Sourced: 28 September
 Status: Plugged and abandoned
 Total depth: 10 509 Feet (-10 424 Feet)

Modified from examples by North Sea Study Group and Exxon Standard Libya Inc.



ANALYSIS	TEST	DATE	DEPTH	SCALE	STATUS	SCHEMATIC	DEPTH	SCALE	STATUS
GRAVIMETRIC	GRAV	10/28/87	10352	1000	OK				
LOGGING	LOG	10/28/87	10352	1000	OK				
...

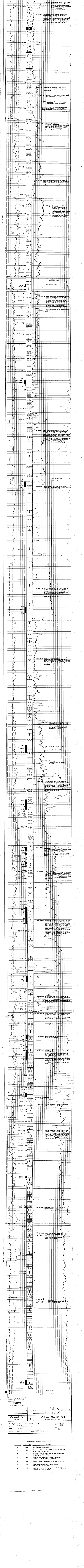
CHANGES	DATE	BY	REASON
...

TEST	DATE	DEPTH	SCALE	STATUS
...

VALUITY	FEET PER SECOND
...	...

CAMMA RAY	INTERVAL TRANSIT TIME
...	...

CALIPER	HOLE DIAM IN INCHES
...	...



Test number	Depth (feet)	Notes
1	806	Test failure, no recovery
2	805	Test failure, no recovery
3	810	Recovered 8000 cc water, 350 cc gas, IP 500 psi.
4	810	Recovered 9300 cc water, 355 cc gas, IP 500 psi.
5	810	Test failure and minor collapse, recovered 10,100 cc water, IP 500 psi, IP 500 psi.
6	810	Test failure, recovered 10,200 cc water, IP 500 psi, IP 500 psi.
7	810	Recovered 7100 cc water, 300 cc gas, IP 375 psi.