

AMERADA HESS MOBIL / STATOIL SAGA

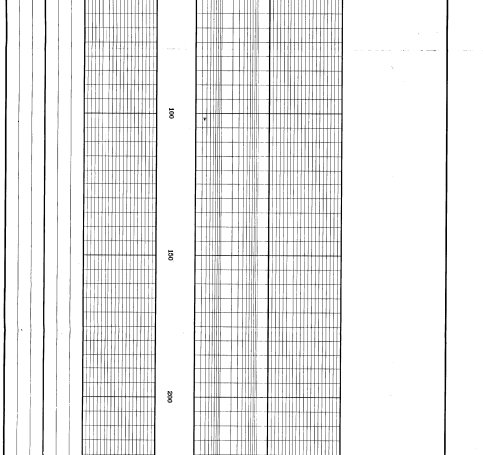
Saga Petroleum a.s.
Composite Well Log
Well 6406/11-1S

SCALE : 1:500
 RIG : TREASURE SAGA
 COUNTRY : NORWAY
 LOCATION : LOCATION
 AREA : AREA
 OPERATOR : SAGA PETROLEUM A.S.
 LICENCE : 156
 DATE TAKEN OVER BY THE LICENCE : 30/05/2000
 RIG RELEASED : 9/02/22
 T.B. DATE : 9/02/22
 RIG RELEASED : 9/02/22
 PLUGGED AND ABANDONED AS A MINOR DISCOVERY

LOCATION : 64°24'00"N
 LATITUDE : 64°24'00"N
 LONGITUDE : 7°02'42.88"E
 ELEVATIONS : 36201.85m
 RIG-MEAN SEA LEVEL : 26.0m
 TOTAL DEPTH : 495.00m
 CUTTERE DEPTH : 413.00m
 Loggers depth : 493.80m

WELLING CONTRACTOR : GEOSERVICE
 TELECOM / VICE / WIRELINE SERVICES : TELECOM / VICE / WIRELINE SERVICES

CASING (INNER-OUT)	WIRELINE (INNER-OUT)	WELL HEAD (INNER-OUT)
30" 449.0 28" 441.0 - 454.0	28" 441.0 28" 441.0 - 454.0	28" 441.0 28" 441.0 - 454.0
18 1/2" 325.0 17 1/4" 325.0 - 336.0	17 1/4" 325.0 17 1/4" 325.0 - 336.0	17 1/4" 325.0 17 1/4" 325.0 - 336.0
9 5/8" 377.0 8 1/2" 377.0 - 388.5	8 1/2" 377.0 8 1/2" 377.0 - 388.5	8 1/2" 377.0 8 1/2" 377.0 - 388.5



GEOLOGICAL SYMBOLS

LITH. PREFIXES

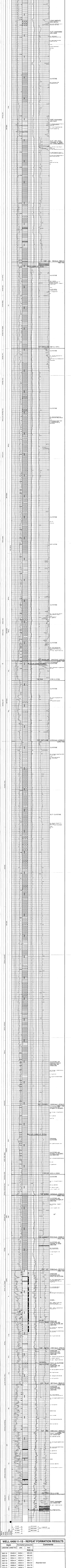
DIAGENETIC SYMBOLS

WELL LOG SYMBOLS

LOG SCALES

LITH.

LOG SCALES



WELL 6406/11-1S - REPEAT FORMATION RESULTS

Depth	Formation pressures	Comments		
mRKB MD	mRKB TVD	psia	bars	RUN 4A
3601.8	3548.8	8494.1	585.65	
3602.8	3549.8	8494.7	585.69	
3607.3	3554.3	8501.3	586.14	
3607.8	3554.8	8509.5	586.71	
3611.8	3558.8	8519.5	587.41	Abandon test
3621.8	3568.8	8540.5	590.05	
3630.8	3577.8	8596.5	599.60	
3651.8	3598.7	8640.0	593.87	
3693.8	3640.6	8613.3	593.87	
3694.3	3641.1	8627.0	594.81	
3704.3	3650.1	8627.1	595.61	
3703.8	3650.6	8662.2	597.24	
3710.3	3657.1	8671.0	597.84	
3728.8	3675.5	8674.0	598.05	
3871.8	3818.2			Tight
3872.3	3818.7			Tight
3894.3	3840.7			Tight
3894.8	3841.2			Tight
3894.3	3850.7	8977.1	618.95	
3904.8	3851.2			light
3908.8	3855.2	9107.8	627.96	
3909.3	3855.7			Abandon test

WELL 6406/11-1S - CORE SUMMARY

Core no.	Cut		Recovered		Logger's depth
	Driller's depth	Interval	Driller's depth	Quantity	
mRKB MD	mRKB TVD	psia	bars	Run 5 E	mRKB
3650.8	3597.2	8567.0	590.70		
3651.8	3598.7	8560.0	590.28		
3652.8	3599.7	8561.0	590.28		
3691.8	3865.0			Tight	
3691.8	3864.5			Tight	
3704.8	3871.0	9120.0	628.82		
3949.8	3896.1			No Seal	
3968.8	3915.1			Tight	
3978.3	3924.5			Lost seal	
3977.8	3924.0			No seal, stuck	