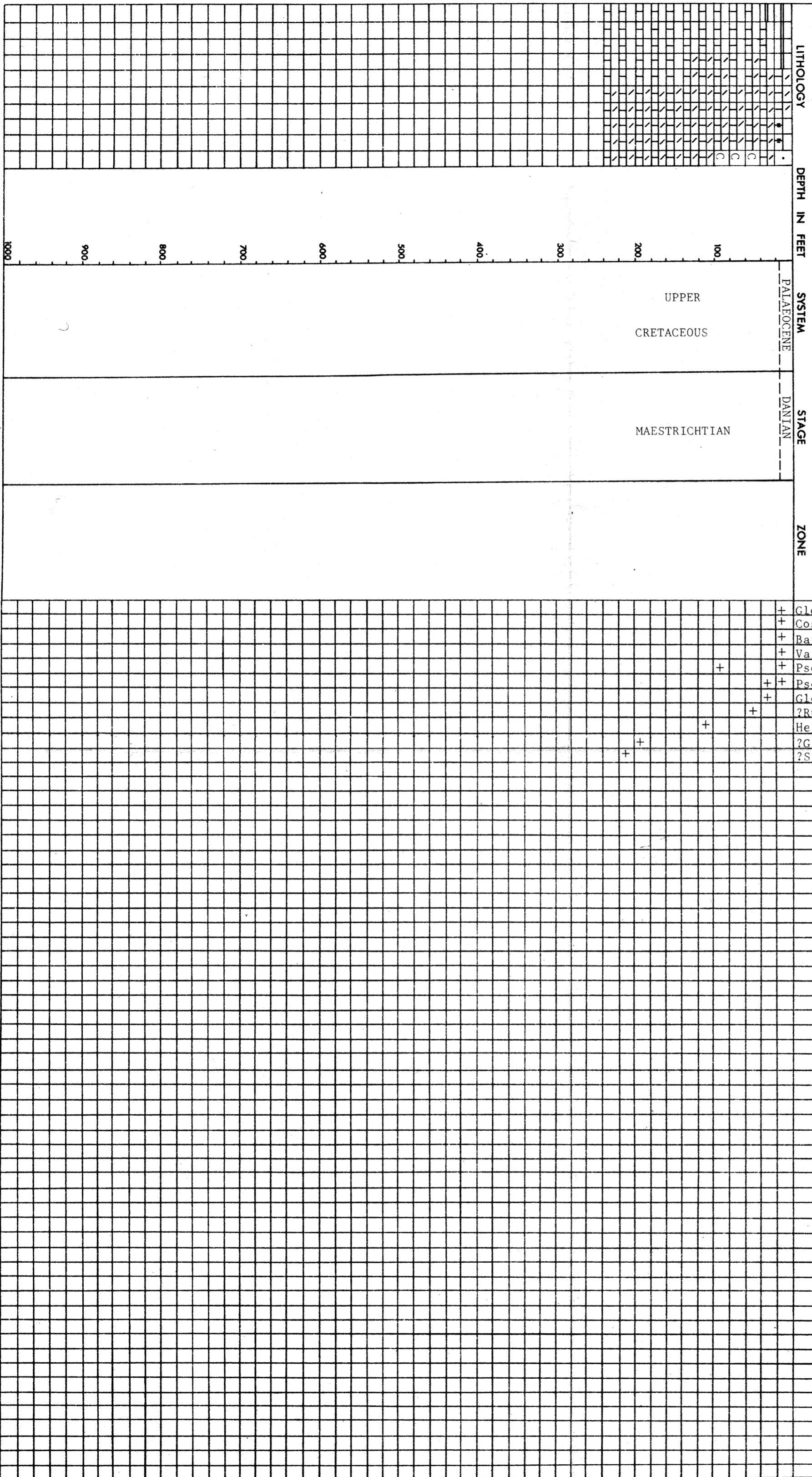


ROBERTSON RESEARCH COMPANY LIMITED

MICROPALAEONTOLOGICAL ANALYSIS CHART

DATE 2.10.68. ANALYST JWC MF PR CWH LOCATION Norwegian North Sea Well 7/11-2X
 FOR Phillips Petroleum Company, Norway. CHART NO. 11
 11,000' - 11,245'

- LIMESTONE SILTSTONE SALT
- DOLOMITE SANDSTONE COAL
- OOLITIC LIMESTONE CONGLOMERATE CHERT
- CLAY GYPSUM White Chalk
- SHALE VOLCANICS
- SILTY/SANDY SHALE INTRUSIVES



MICROFOSSILS

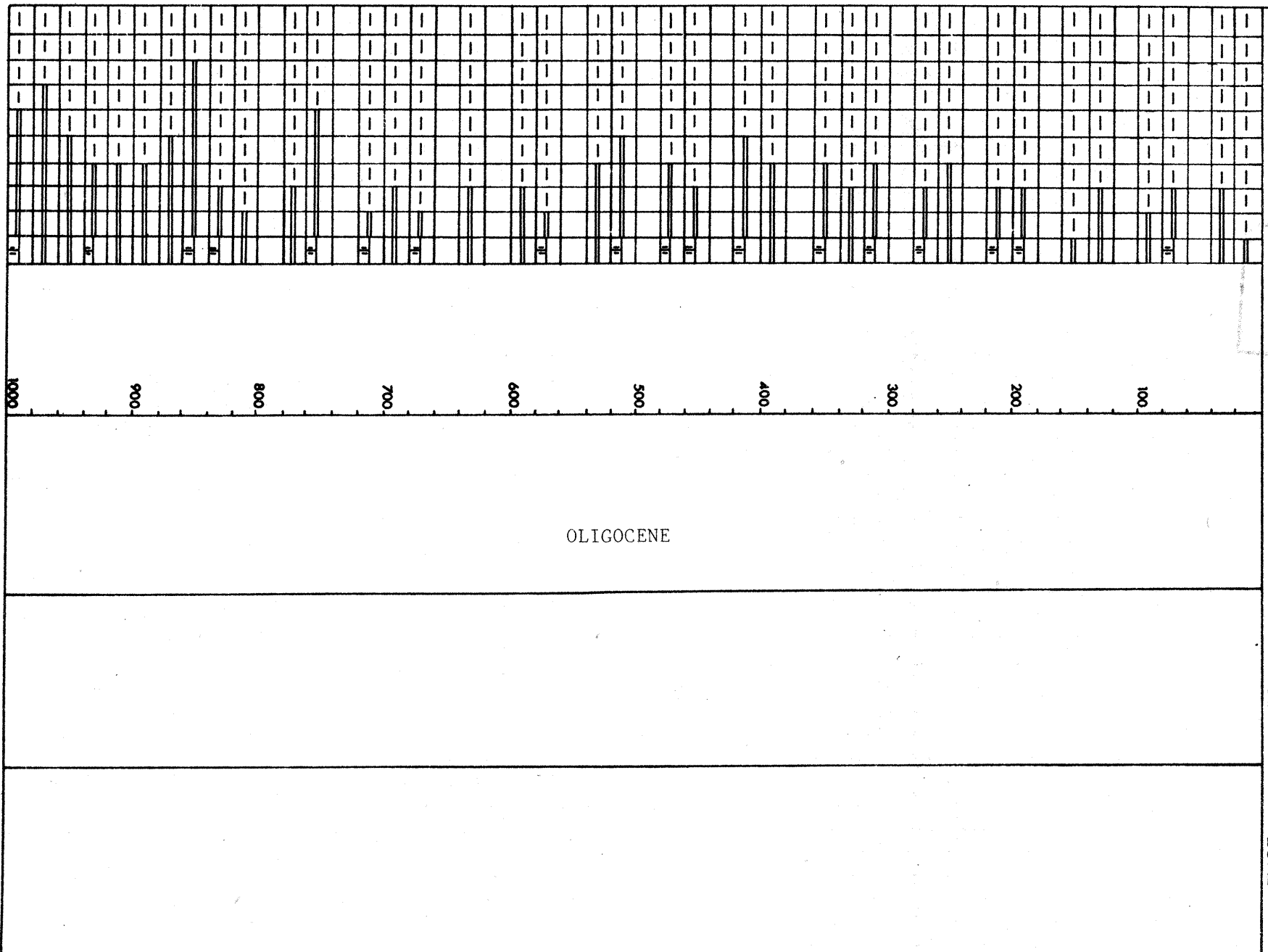
- Globigerina triloculinoides
- Coscinodiscus sp.
- Bathysiphon eocenicus
- Valulineria sp.
- Pseudotextularia elegans elegans
- Pseudotextularia elegans fructicosa
- Globotruncana cf. marginata
- ?Rugoglobigerina rugosa
- Heterohelix sp.
- ?Globotruncana contusa
- ?Stensioina pommerana

ROBERTSON RESEARCH COMPANY LIMITED

MICROPALAEONTOLOGICAL ANALYSIS CHART

DATE 6.9.68. ANALYST CWH. PR LOCATION Norwegian North Sea Well 7/11-2X
 FOR Phillips Petroleum Company, Norway. CHART NO. 7
 7000' - 8000'

- LIMESTONE SILTSTONE SALT
- DOLOMITE SANDSTONE COAL
- OOLITIC LIMESTONE CONGLOMERATE CHERT * Reworked Upper Cretaceous forms
- CLAY GYPSUM
- SHALE VOLCANICS
- SILTY/SANDY SHALE INTRUSIVES



DEPTH IN FEET	SYSTEM	STAGE	ZONE	MICROFOSSILS
1000	OLIGOCENE			
900	OLIGOCENE			
800	OLIGOCENE			
700	OLIGOCENE			
600	OLIGOCENE			
500	OLIGOCENE			
400	OLIGOCENE			
300	OLIGOCENE			
200	OLIGOCENE			
100	OLIGOCENE			
0				

MICROFOSSILS
Haplophragmoides carinatum
Haplophragmoides latidorsatus
Haplophragmoides aff. narivaensis
Recurvoides sp.
Bathysiphon cf. dubia
Rhabdammina sp.
Coscinodiscus sp.
Gravellina cf. narivaensis
Sigmoilina tenuis
Globigerina angustiumbilitata
Catapsydrax unicavus
Cribrostomoides sp.l.
Cyclamina placenta
Siphonodosaria hirsuta
Globigerina concinna
Lenticulina hauerina
Globigerina praebulloides praebulloides
Eponides umbonatus
Lagena elongata
Hyppocrepina sp.
Sigmoilina schumbergeri
Ammodiscus incertus
Globigerina praebulloides leroyi
Lenticulina grandis
Nonion affine
Hormosina sp.
Pullenia sphaeroides
Pelosina sp.
Asterigerina gUrichi
Cibicides tenellus
Stensioina cf. pommerana *
Quinqueloculina akneriana
Ammodiscus dominicensis
Fronicularia seminuda
Pyrgo bulloides
Globotruncana cf. marginata *
Haplocytheridea cf. curvata
Guttulina problema
Cornuspira involens
Bulimina elongata
Lagena sulcata
Glomospira charoides
Pyrulina cylindroides

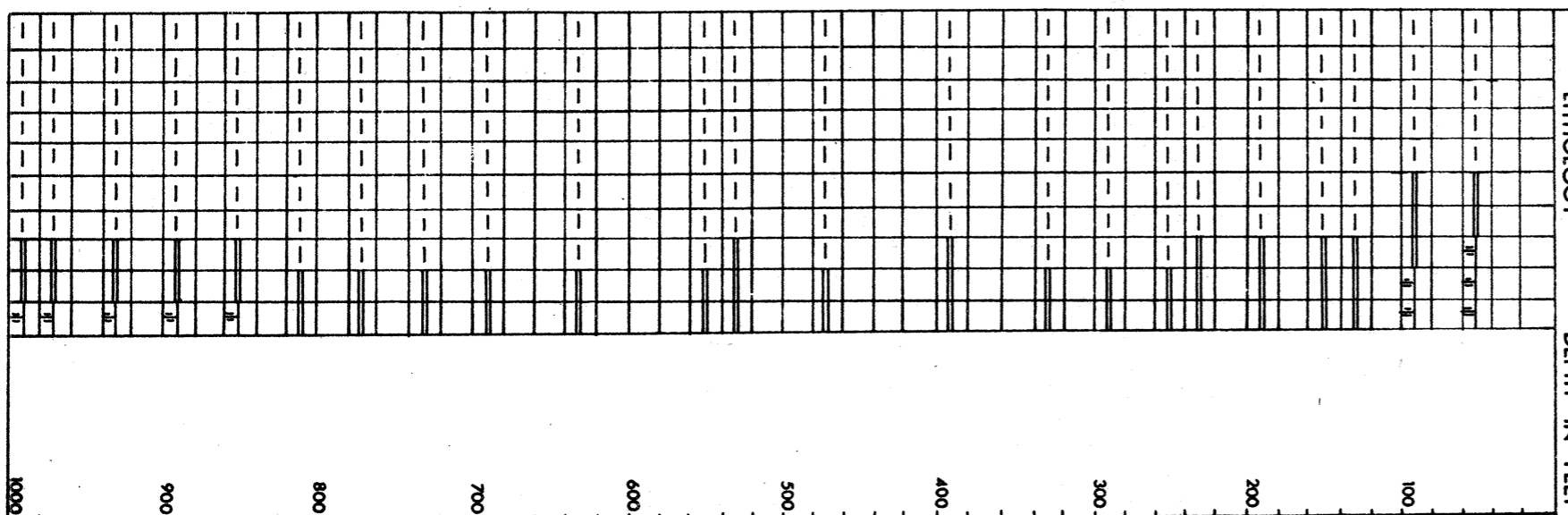
FORAMINIFERA AND OSTRACODA

ROBERTSON RESEARCH COMPANY LIMITED

MICROPALAEONTOLOGICAL ANALYSIS CHART

DATE 8.8.68 ANALYST MCC LOCATION Norwegian North Sea Well 7/11-2X
 CWH RIG
 FOR Phillips Petroleum Company, Norway. CHART NO. 5
 5000' - 6000'

- LIMESTONE
- DOLOMITE
- CALCITIC LIMESTONE
- CLAY
- SHALE
- SILTY/SANDY SHALE
- SILTSTONE
- SANDSTONE
- CONGLOMERATE
- GYPSUM
- VOLCANICS
- INTRUSIVES
- SALT
- COAL
- CHERT



DEPTH IN FEET	SYSTEM	STAGE	ZONE
100 - 1000	MIDDLE MIOCENE	BURDIGALIAN	
		AQUITANIAN	

MICROFOSSILS

Depth (ft)	1000	900	800	700	600	500	400	300	200	100	Fossil Name
1000											Krithe cf. papillosa
900											Globigerina foliata
800											Globigerina bradyi
700											Globigerina juvenilis
600											Globigerina angustumilicata
500											Cibicides aknerianus
400											Cibicides ungerianus
300											Loxostomum sinuosum
200											Elphidium antoninum
100											Uvigerina hosiusi
											Nonion affine
											Nonion soldanii
											Nonion granosum
											Nonion boueanum
											Lagena laevigata
											Sigmoilina celata
											Pullenia sphaeroides
											Bulimina elongata var. subulata
											Rotalia beccarii var.
											Haplophragmoides latidorsatus
											Cyclammina placenta
											Quinqueloculina undosa
											Listerella communis
											Bathysiphon cf. dubia
											Cassidulina laevigata
											Bolivina beyrichi
											Orbulina suturalis
											Cytheridea mulleri
											"Cythere" latimarginata
											Cytherella beyrichi
											Glandulina laevigata
											Cyclammina sp.
											Eponides repandus
											Bulimina elongata var. tenera
											Dentalina soluta
											Ammodiscus incertus
											Fronicularia nysti
											Angulogerina gracilis var. tenuistriata
											Cassidulina subglobosa
											Uvigerina canariensis
											Orbulina universa
											Globigerinoides subquadratus
											Globorotalia mayeri
											Glomospira charoides
											Uvigerina tenuipustulata
											Cyroidina girardana
											Haplophragmoides carinatum
											Globigerinoides triloba sacculifera
											Globorotalia fohsi barisanensis
											Globorotalia scitula scitula
											Pseudoclavulina chitinsa
											Recurvoides sp.
											Haplophragmoides aff. narivaensis
											Sphaeroidinellopsis seminulina seminulina
											G. scitula praescitula/G. scitula scitula trans.
											Globorotalia scitula praescitula
											Globigerinoides triloba immatura
											Globigerinoides triloba triloba
											Radiolaria

FORAMINIFERA AND OSTRACODA

OTHER FOSSILS

ROBERTSON RESEARCH COMPANY LIMITED

MICROPALAEONTOLOGICAL ANALYSIS CHART

DATE 8.8.68. ANALYST CWH. LOCATION BJG. Norwegian North Sea Well 7/11-2X
FOR Phillips Petroleum Company, Norway. CHART NO. 4
DEPTH IN FEET 4000' - 5000'

- LIMESTONE
- SANDSTONE
- COAL
- DOLOMITE
- CONGLOMERATE
- CHERT
- CLAY
- GYPSUM
- SHALE
- VOLCANICS
- SILTY/SANDY
- INTERGLACIAL
- SHALE
- SILTSTONE
- SALT
- COAL
- CHERT
- GYPSUM
- VOLCANICS
- INTERGLACIAL

LITHOLOGY DEPTH IN FEET SYSTEM STAGE ZONE

MIDDLE MIOCENE

MICROFOSSILS

- Aurila convexa
- Quinqueloculina undosa
- Quinqueloculina seminulum
- Quinqueloculina buchiana
- Pyrgo bulloides
- Sigmoilina celata
- Cibicides lobatulus var. grossa
- Cibicides ungerianus
- Bulimina elongata var. tenera
- Bulimina elongata var. subulata
- Globigerina bulloides
- Nonion affine
- Nonion soldanii
- Nonion granosum
- Uvigerina asperula
- Uvigerina canariensis
- Elphidium antonium
- Dentalina soluta
- Nodosaria pyrula
- Cassidulina laevigata
- Cassidulina subglobosa
- Globigerina angustiumbilicata
- Lagena laevigata
- Cibicides peelsensis
- Uvigerina hosiensis
- Rotalia beccarii var.
- Glandulina laevigata
- Lenticulina grandis
- Loxostomum sinuosum
- Echinocythereis scabra
- "Cythere" latimarginata
- Cornuspira involens
- Cibicides aknerianus
- Quadracythere macropora
- Nonion bouesnum
- Lagena elongata
- Pullenia sphaeroides
- Pullenia quinqueloba
- Siphotextularia labiata
- Lagena striata
- Lagena hexagona
- Dentalina arcuata
- Sphaeroidina bulloides
- Globigerina praebulloides praebulloides
- Globigerina juvenilis
- Globorotalia cf. mayeri
- Cythereida mulleri
- Gyroldina girardana
- Paracyprideis rarefistulosa
- Trifarina bradyi
- Bulimina elongata
- Bolivina beyrichi
- Sigmoilina miocenica
- Lenticulina hauerina
- Spiroloculina canaliculata
- Eponides repandus
- Cythereella beyrichi
- Cibicides lobatulus
- Cancris auriculus
- Bathysiphon cf. dubia
- Listerella communis
- Krithe cf. papillosa
- Karrerriella siphonella
- Bolivina subspinescens
- Globigerinoides triloba triloba
- Echinocythereis scabropapulosa
- Cyclamina placenta
- Paracypris polita
- Amodiscus incertus
- Cyclamina sp.
- Haplophragmoides latidorsatus
- Glandulina aequalis
- Glomospira charoides
- Globigerina bradyi
- Globigerina foliata

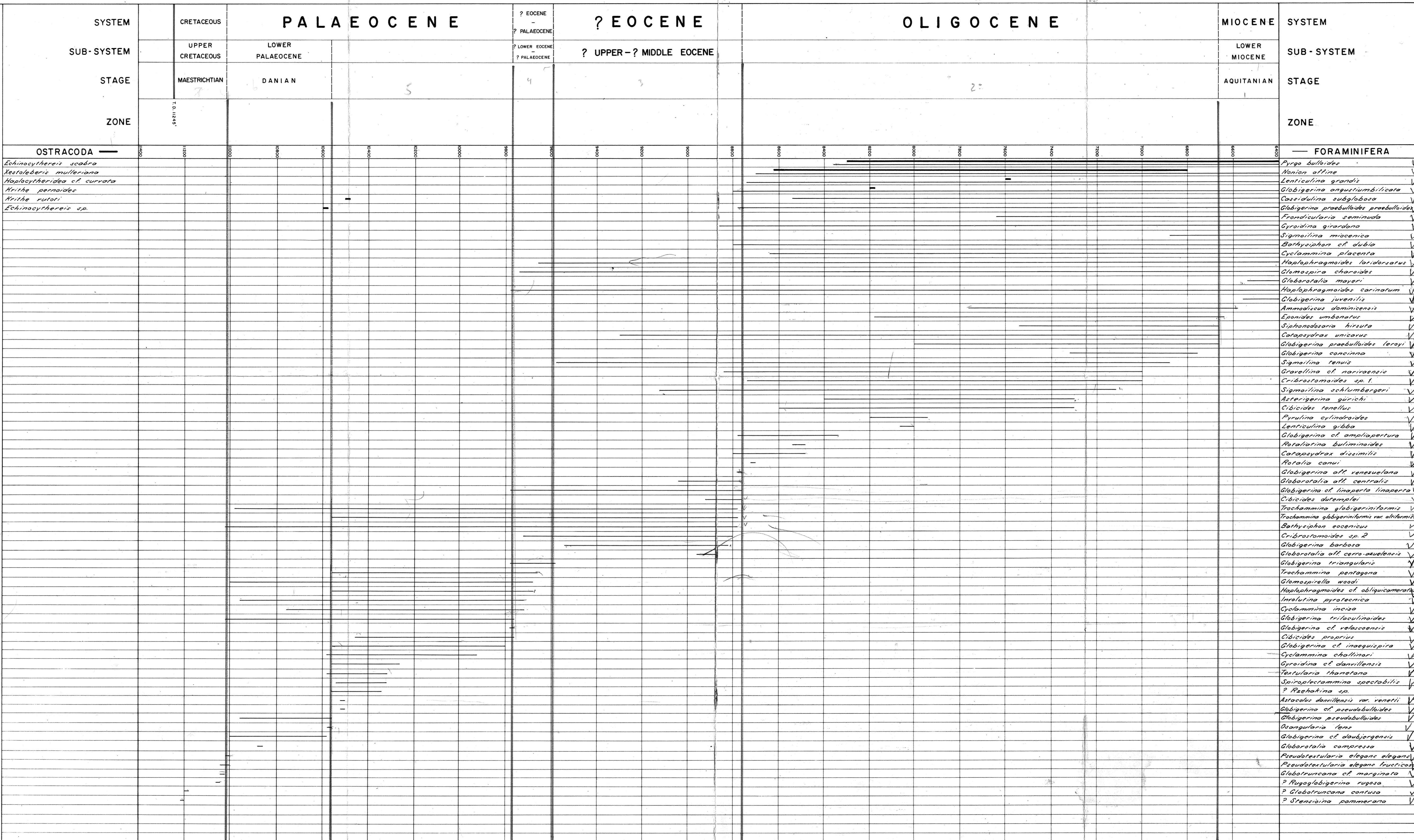
Radiolaria

FORAMINIFERA AND OSTRACODA

OTHER FOSSILS

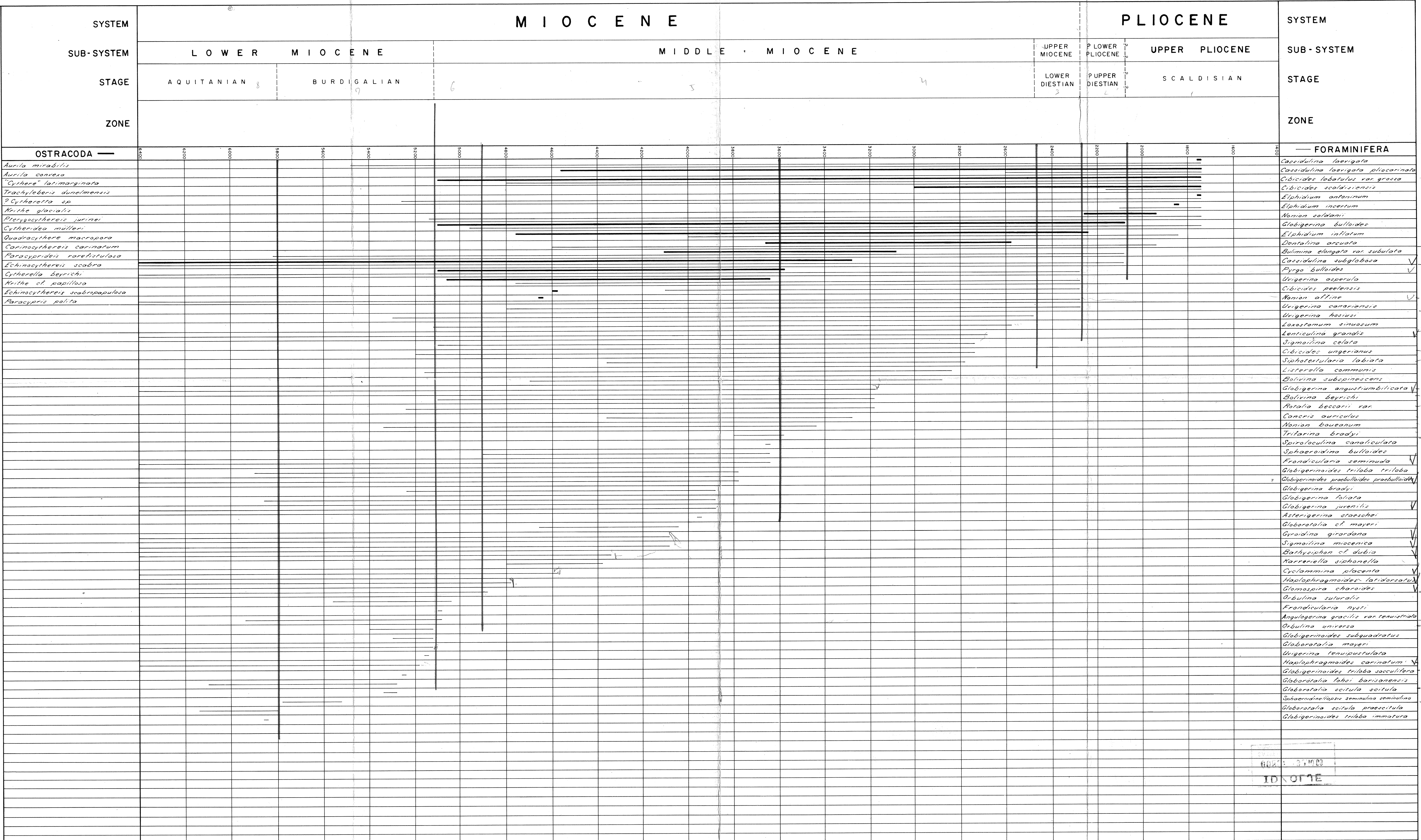
DEPTH IN FEET	SYSTEM	STAGE	ZONE	MICROFOSSILS
100				
200				
300				
400				
500				
600				
700				
800				
900				
1000				
1100				
1200				
1300				
1400				
1500				
1600				
1700				
1800				
1900				
2000				
2100				
2200				
2300				
2400				
2500				
2600				
2700				
2800				
2900				
3000				
3100				
3200				
3300				
3400				
3500				
3600				
3700				
3800				
3900				
4000				
4100				
4200				
4300				
4400				
4500				
4600				
4700				
4800				
4900				
5000				

BIOSTRATIGRAPHIC CHART SHOWING THE DISTRIBUTION OF THE DIAGNOSTIC, CAENOZOIC AND MESOZOIC FORAMINIFERA AND OSTRACODA IN THE PHILLIPS (NORWAY) 7/11-2X NORTH SEA WELL



M I O C E N E

P L I O C E N E



BIOSTRATIGRAPHIC CHART SHOWING THE DISTRIBUTION OF THE DIAGNOSTIC, CAENOZOIC AND MESOZOIC FORAMINIFERA AND OSTRACODA IN THE PHILLIPS (NORWAY) 7/11 - 2X NORTH SEA WELL



68001-011000
ID: 071E