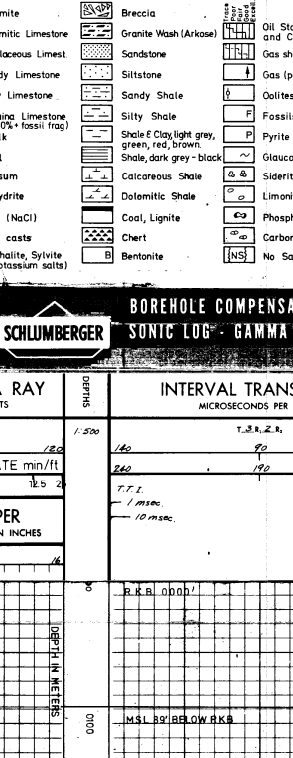


COMPLETION LOG

SYRACUSE OILS NORGE A/S
 COMPOSITE LOG
 COMPANY SYRACUSE OILS NORGE WELL NUMBER U/10-13
 COUNTY NORWAY
 CO-ORDINATES 57° 00' 42.561" N PRODUCTION LICENSE 1000
 06° 10' 00.242" E LICENCE BLOCK 10
 DATE SPUNDED 3-8-69 DATE COMPLETED 19-8-69
 ELEVATION KB. 7972 DF. 87 WATER DEPTH 2607
 TOTAL DEPTH 7972' PBTD. STATUS D & A
 CASING RECORD 216' at 42' 13 1/2" at 831' 9 1/2" at 3356'

GEOLOGIST S.S. WARNER - M. MELLI
 REMARKS ODECO - OCEAN VIKING
 TESTING AND COMPLETION SUMMARY NO CORES - NO TESTS

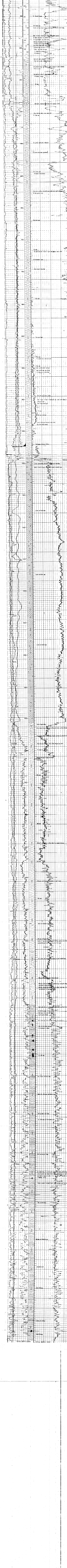


LEGEND

<ul style="list-style-type: none"> Limestone Dolomite Dolomitic Limestone Argillaceous Limestone Sandy Limestone Silty Limestone Clayey Limestone Chert Marl Gypsum Anhydrite Salt (NaCl) Salt casts Pyroclastic, Spilitic, Brecciated 	<ul style="list-style-type: none"> Conglomerate Breccia Granite Weir (Actual) Siltstone Sandy Shale Silty Shale Shale Clay like grey, green, red, brown Shale, dark grey - black Carbonaceous shale Coal Coal lignite Chert Bentonite 	<ul style="list-style-type: none"> Percentage of Drill Cuttings with Finer than 60 mesh (%) Oil Stains in Oil Phase and Cut in Cut Oil Stains in Mud or Cuttings Oil together with S.S.T. Oil Fossils Siderite Quartzite Nodules Phosphate Carbonate Nodules No Samples
--	--	--

SCHLUMBERGER BOREHOLE COMPENSATED SONIC LOG - GAMMA RAY

GAMMA RAY API UNITS	INTERVAL TRANSIT TIME MICROSECONDS PER FOOT
DRILLING RATE (m/min)	1, 2, 3, 4, 5, 6, 7, 8, 9, 10
CALIPER HOUSING DIA. IN INCHES	



(U-3)