

719/12-3
Scale 1:500
DATE: 01.03.1994

COORDINATES: 71° 14' 20.18" N
19° 44' 37.92" E

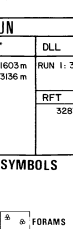
K.B.: 29 m
WATER DEPTH: 211 m
TOTAL DEPTH: 334 m
DEEPEST FORM. PER.: TRIASSIC

RIG RELEASE DATE: 13.09.1993
WELL STATUS: PLUGGED & ABANDONED
RIG: DUYGI DELTA

CONTRACTOR: DYVI DRILLING
GEOLOGISTS: PETERSEN/AGREN/HJELLE/SPSTAD/STREUM/ARNTSEN/FAELTZ/ROEDER/ROSTENEN
PREPARED BY: H. NYGÅRD

LEAK OFF: 1.76
at 302 m m
at 1603 m m
at 3155.8 m 2.06

VELOCITY SURVEY: VSP
94 LEVELS BETWEEN 3314 - 300m

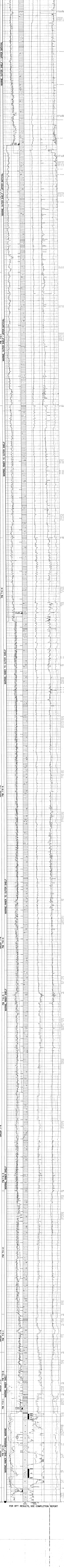
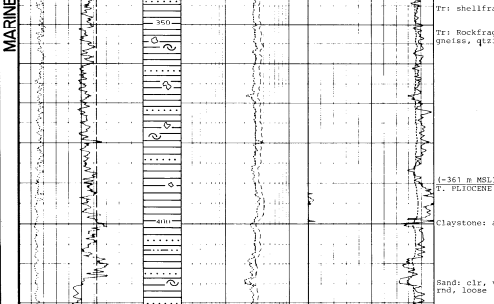


LOGS RUN

LOG NO.	LOG TYPE	DEPTH (m)	LOG NO.	LOG TYPE	DEPTH (m)
RUN 1	LOG 1	334 - 300	RUN 1	LOG 1	334 - 300
RUN 2	LOG 2	300 - 270	RUN 2	LOG 2	300 - 270
RUN 3	LOG 3	270 - 240	RUN 3	LOG 3	270 - 240
RUN 4	LOG 4	240 - 210	RUN 4	LOG 4	240 - 210
RUN 5	LOG 5	210 - 180	RUN 5	LOG 5	210 - 180
RUN 6	LOG 6	180 - 150	RUN 6	LOG 6	180 - 150
RUN 7	LOG 7	150 - 120	RUN 7	LOG 7	150 - 120
RUN 8	LOG 8	120 - 90	RUN 8	LOG 8	120 - 90
RUN 9	LOG 9	90 - 60	RUN 9	LOG 9	90 - 60
RUN 10	LOG 10	60 - 30	RUN 10	LOG 10	60 - 30

LITHOLOGIC SYMBOLS

SAND SANDSTONE	LIMESTONE	ANHYDRITE	FOAMS	GRIT	MICA
SILTSTONE	CHALK	COAL LIGNITE	WOOD FRAGS	GLAUCONITE	STYLLITES
CLAY CLAYSTONE	DOLomite	FLUFF	FOSILS GEN'L	CHERT	BORROWS
SHALE	MARL	SALT	SHELL FRAGS	SIDERITE	FRACURES
SHOW OR STAIN	HYDROCARBON CUT	FLUORESCENCE	SAND SHOW		



FOR RFT RESULTS, SEE COMPLETION REPORT