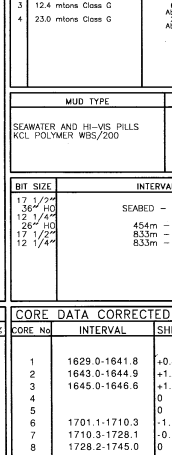


CONOCO NORWAY INC. AMOCO/ELF/STATOIL. WELL: 7128/6-1. AMOCO/STATOIL. COMPOSITE WELL LOG

LOCATION: 71 31' 04.99" N, 28 49' 03.41" E. Country: NORWAY. Area: FINNMARK EAST. Licence: PL 181. Field: WILDCAT. Date Spudded: 11th AUGUST 1991. Date Completed: 17th OCTOBER 1991. K B Mean Sea Level: 23.5 m. D Date: 17th OCTOBER 1991. K B Sea Floor: 359 m. Water Depth: 335.5 m. Total Depth: 2541m (DRILLER) 2541m (ATLAS). Completion Status: PLUGGED AND ABANDONED AS A DRY HOLE.



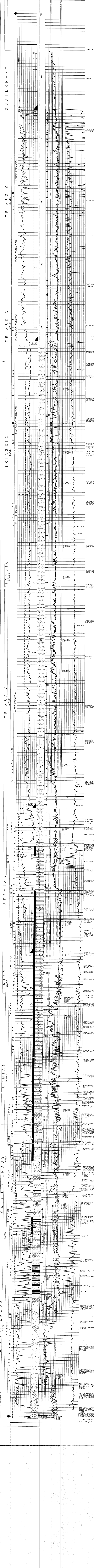
CONOCO GEOLOGISTS, ELECTROPHYSICAL LOGS, CONOCO ENGINEERS, MUDLOG SERVICE, DRILLING CONTRACTORS & RIG, SOMAT OFFSHORE (UK) LTD.

WELL SITE CORE DATA, CORE DATA CORRECTED TO GR LOG. Includes columns for Core No, Interval, Rec, Sec, and various depth measurements.

REMARKS: TELECO WIRE LOG RESISTIVITY IS SPLICED IN FROM 559m TO 454m.

MAIN LITHOLOGICAL SYMBOLS, SECONDARY LITHOLOGICAL SYMBOLS, SYMBOLS FOR USE IN CARBONATE PROVINCES.

FOSSIL SYMBOLS, CASING & COMPLETION, LITHOLOGY. Includes casing shoe, hole deviation, and casing/shell symbols.



TO DRILLERS DEPTH 2541.0m (-2516.7m). TOP METASANDSTONE 2433.0m (-2507.3m). TOP BASEMENT WASH 2488.5m (-2462.5m).