

ROBERTSON RESEARCH LABORATORIES

LLANDULAS, ABERGELE, DENBIGHSHIRE, NORTH WALES

LLANDULAS 424-5
Telephone: STD 0492-66-424

Cables: RESEARCH ABERGELE
TELEX 61216



CORE ANALYSIS REPORT

COMPANY Amoco Norway Oil Company
 WELL 2/5 - 2 Core 1
 LOCATION/WELL North Sea
 COUNTY _____
 COUNTRY Norway
 REMARKS Porosity by air comparison pycnometer.
Permeability by Gaseous Nitrogen.

DATE 1 September 1970
 DEPTH 9996 ft. TO 10018 ft.
 GEO-ENGINEER R. E. Morris

- | | | | |
|--|------------|--|--------------|
| | SAND | | LIME |
| | SILTY SAND | | CONGLOMERATE |
| | SILTSTONE | | Shaly Chalk |
| | SHALE | | |

TABULAR DATA

ANALYSIS GRAPH

| SAMPLE NUMBER | DEPTH FEET | Nitrogen PERM. MD. | | POROSITY PERCENT | FLUID SATURATION % PORE VOLUME | | | REMARKS | PERMEABILITY MD. ●—○ | | | | | WATER SATURATION % PORE ○—○ | | | | | | | | | | | | | | | | | | | | | |
|---------------|------------|--------------------|--------|------------------|--------------------------------|-------|---------|---------------------------|----------------------|-----|-----|-----|-----|-----------------------------|-----|----|----|----|----|---------------------------|--|--|--|--|--|--|--|--|--|--|--|--|--|--|--|
| | | HOR ● | VERT ○ | | HOR X | OIL X | WATER ○ | | 0.5 | 0.4 | 0.3 | 0.2 | 0.1 | 0 | 100 | 80 | 60 | 40 | 20 | 0 | | | | | | | | | | | | | | | |
| | | POROSITY % x—x | | | | | | | | | | | | | | | | | | OIL SATURATION % PORE x—x | | | | | | | | | | | | | | | |
| 1 | 9996' | 0.29 | 0.18 | 21.5 | 22.4 | 28.2 | | Chk. Buff. Hd. | | | | | | | | | | | | | | | | | | | | | | | | | | | |
| 2 | 10000' | 0.23 | 0.37 | 25.6 | 38.2 | 21.3 | | Chk. Buff. | | | | | | | | | | | | | | | | | | | | | | | | | | | |
| 3 | 10005' | 0.14 | 0.12 | 23.4 | 23.1 | 38.1 | | Chk. Buff. | | | | | | | | | | | | | | | | | | | | | | | | | | | |
| 4 | 10010' | 0.18 | 0.06 | 15.5 | 15.7 | 54.0 | | Chk. Lt. Shly. Buff. Vein | | | | | | | | | | | | | | | | | | | | | | | | | | | |
| 5 | 10015' | 0.16 | 0.14 | 22.9 | 16.7 | 40.4 | | Chk. Styl. | | | | | | | | | | | | | | | | | | | | | | | | | | | |
| 6 | 10018' | 0.09 | 0.05 | 20.9 | 28.3 | 39.7 | | Chk. Buff. Crd. Hd. | | | | | | | | | | | | | | | | | | | | | | | | | | | |

ROBERTSON RESEARCH LABORATORIES

LLANDULAS, ABERGEELE, DENBIGHSHIRE, NORTH WALES

Telephone: LLANDULAS 424-5
SYD 0402-66-424

Cables: RESEARCH ABERGEELE
TELEX 61216



CORE ANALYSIS REPORT

COMPANY Amoco Norway Oil Company
 WELL 2/5-1 Core 2.
 LOCATION/FIELD Norwegian North Sea
 COUNTY _____
 COUNTRY Norway
 REMARKS Porosity by air comparison pycnometer.
Permeability by gaseous nitrogen.
TR <0.01 md. <0.1%.

DATE 8 September 1970.
 DEPTH 10021 ft. TO 10033 ft.
 GEO - ENGINEERS R. E. Morris & B. P. Baxter

. . . SAND
 - - - SILTY SAND
 = = = SILTSTONE
 - - - SHALE
 □ □ □ LIME
 ○ ○ ○ CONGLOMERATE
 □ □ □ CHALK
 □ - - □ SHALY CHALK
 C C C C C C C
 C C C C C C C
 C C C C C C C
 C C C C C C C
 C C C C C C C

TABULAR DATA

ANALYSIS GRAPH

| SAMPLE NUMBER | DEPTH FEET | AIR PERM. MD. | | POROSITY PERCENT | FLUID SATURATION % PORE VOLUME | | | GRAVITY OIL °API | REMARKS | PERMEABILITY MD. ○—● 0.5 0.4 0.3 0.2 0.1 :0 | WATER SATURATION % PORE ○—○ 100 80 60 40 20 0 | |
|---------------|------------|---------------|------|------------------|--------------------------------|------|-------|----------------------------------|---------|------------------------------------------------|--------------------------------------------------|------------------------------------------------|
| | | HOR | VERT | | HOR | OIL | WATER | | | | POROSITY % x—x 30 24 18 12 6 0 | OIL SATURATION % PORE x—x 0 20 40 60 80 100 |
| 1 | 10021 | 0.36 | 0.00 | 27.6 | 24.3 | 30.0 | | Chk, Buff, Frm. | | X | ○ | |
| 2 | 10027 | TR | 0.00 | 5.0 | 10.7 | 89.3 | | Lmst, Lt.Gry, Brittle 350 fract. | | X | ○ | |
| 3 | 10030 | 0.04 | 0.06 | 23.7 | 13.0 | 34.6 | | Chk, Mod. Lt.Gry - Buff, Frm. | | X | ○ | |
| 4 | 10033 | 0.09 | 0.02 | 14.8 | Trace | 70.1 | | Chk, Lt.Gry, Hd. | | X | ○ | |

ROBERTSON RESEARCH LABORATORIES

LLANDULAS, ABERGELE, DENBIGHSHIRE, NORTH WALES

LLANDULAS 424-5
Telephone STD 0492-66-424

RESEARCH ABERGELE
Cables TELEX 61216



CORE ANALYSIS REPORT

COMPANY Amoco Norway Oil Company

WELL 2/5-1 Core 3.

LOCATION/WELL Norwegian North Sea

COUNTY _____

COUNTRY Norway

REMARKS Porosity by air comparison pycnometer.
Permeability by gaseous nitrogen.
TR <0.01 md. <0.1%.

DATE 8 September 1970.

DEPTH 10039 ft. TO -

GEO-ENGINEERS R. E. Morris & B. P. Baxter

- SAND
- SILTY SAND
- SILTSTONE
- SHALE
- LIME
- CONGLOMERATE
- CHALK
- SHALY CHALK
- C
CHERT

TABULAR DATA

ANALYSIS GRAPH

| SAMPLE NUMBER | DEPTH FEET | N ₂ AIR PERM. MD. | | POROSITY PERCENT | FLUID SATURATION % PORE VOLUME | | GRAVITY OIL °API | REMARKS | PERMEABILITY MD. ○—● | | | | | WATER SATURATION % PORE ○—○ | | | | | POROSITY % x—x | | | | | OIL SATURATION % PORE x—x | | | | |
|---------------|------------|------------------------------|------|------------------|--------------------------------|-------|------------------|----------------------------------|----------------------|-----|-----|-----|-----|-----------------------------|-----|----|----|----|----------------|---|---|----|----|---------------------------|----|-----|--|--|
| | | | | | | | | | | | | | | | | | | | | | | | | | | | | |
| | | HOR | VERT | HOR | OIL | WATER | | | 0.5 | 0.4 | 0.3 | 0.2 | 0.1 | 0 | 100 | 80 | 60 | 40 | 20 | 0 | 0 | 20 | 40 | 60 | 80 | 100 | | |
| 5 | 10039 | 0.15 | 0.02 | 13.0 | 19.7 | 30.5 | | Chk, Bufr, Fra, - Hd, Chert Lam. | | | | | | | | | | | | | | | | | | | | |
| | | | | | | | | | | | | | | | | | | | | | | | | | | | | |
| | | | | | | | | | | | | | | | | | | | | | | | | | | | | |
| | | | | | | | | | | | | | | | | | | | | | | | | | | | | |

ROBERTSON RESEARCH LABORATORIES

LLANDDULAS, ABERGELE, DENBIGHSHIRE, NORTH WALES

LLANDDULAS 424-5
Telephone STD 0492-66-424

Cables: RESEARCH ABERGELE
TELEX 61216



CORE ANALYSIS REPORT

COMPANY Amoco Norway Oil Company
 WELL 2/5-1 Core 4.
 LOCATION/WELL Norwegian North Sea
 COUNTY _____
 COUNTRY Norway
 REMARKS Porosity by air comparison pycnometer.
Permeability by gaseous nitrogen.
TR <0.01 md. <0.1%.

DATE 8 September 1970.
 DEPTH 10045 ft. TO 10065 ft.
 GEO - ENGINEERS R.E. Morris & B.P. Baxter

- | | | | |
|-------|------------|------|--------------|
| | SAND | □□□□ | LIME |
| ----- | SILTY SAND | ○○○○ | CONGLOMERATE |
| ===== | SILTSTONE | □□□□ | CHALK |
| ----- | SHALE | □--□ | SHALY CHALK |
| | | C | CHERT |

TABULAR DATA

ANALYSIS GRAPH

| SAMPLE NUMBER | DEPTH FEET | N ₂ AIR PERM. MD. | | POROSITY PERCENT | FLUID SATURATION % PORE VOLUME | | | GRAVITY OIL °API | REMARKS | PERMEABILITY MD. ○—○ | | | | | WATER SATURATION % PORE ○—○ | | | | | |
|---------------|------------|------------------------------|------|------------------|--------------------------------|------|-------|------------------------------------|---------|---------------------------------|---|---|---|---|-----------------------------|---|---|---|---|---|
| | | HOR | VERT | | HOR | OIL | WATER | | | 0.125 0.100 0.075 0.050 0.025 0 | | | | | 100 80 60 40 20 0 | | | | | |
| | | | | | | | | | | POROSITY % x—x | | | | | OIL SATURATION % PORE x—x | | | | | |
| 6 | 10045 | 0.12 | 0.01 | 21.1 | 2.2 | 51.0 | | Chk, Buff - Wh, Frm - Hd. | ○ | ○ | ○ | ○ | ○ | ○ | ○ | ○ | ○ | ○ | ○ | ○ |
| 7 | 10050 | TR | TR | 10.5 | Trace | 100 | | Chk, Mod. Lt. Gry. - Buff, Frm. | ○ | ○ | ○ | ○ | ○ | ○ | ○ | ○ | ○ | ○ | ○ | ○ |
| 8 | 10055 | TR | TR | 9.5 | 21.1 | 76.7 | | Chk, Lt. Gry, Frm, Sl. Pyr, Glauc. | ○ | ○ | ○ | ○ | ○ | ○ | ○ | ○ | ○ | ○ | ○ | ○ |
| 9 | 10060 | 0.00 | TR | 6.8 | 49.1 | 50.9 | | Lmst, Lt. Gry, Chky, Pyr, Brittle | ○ | ○ | ○ | ○ | ○ | ○ | ○ | ○ | ○ | ○ | ○ | ○ |
| 10 | 10065 | 0.00 | 0.00 | 8.4 | 0.0 | 64.7 | | Chk, Lt. Gry, Hd. | ○ | ○ | ○ | ○ | ○ | ○ | ○ | ○ | ○ | ○ | ○ | ○ |



CORE ANALYSIS REPORT

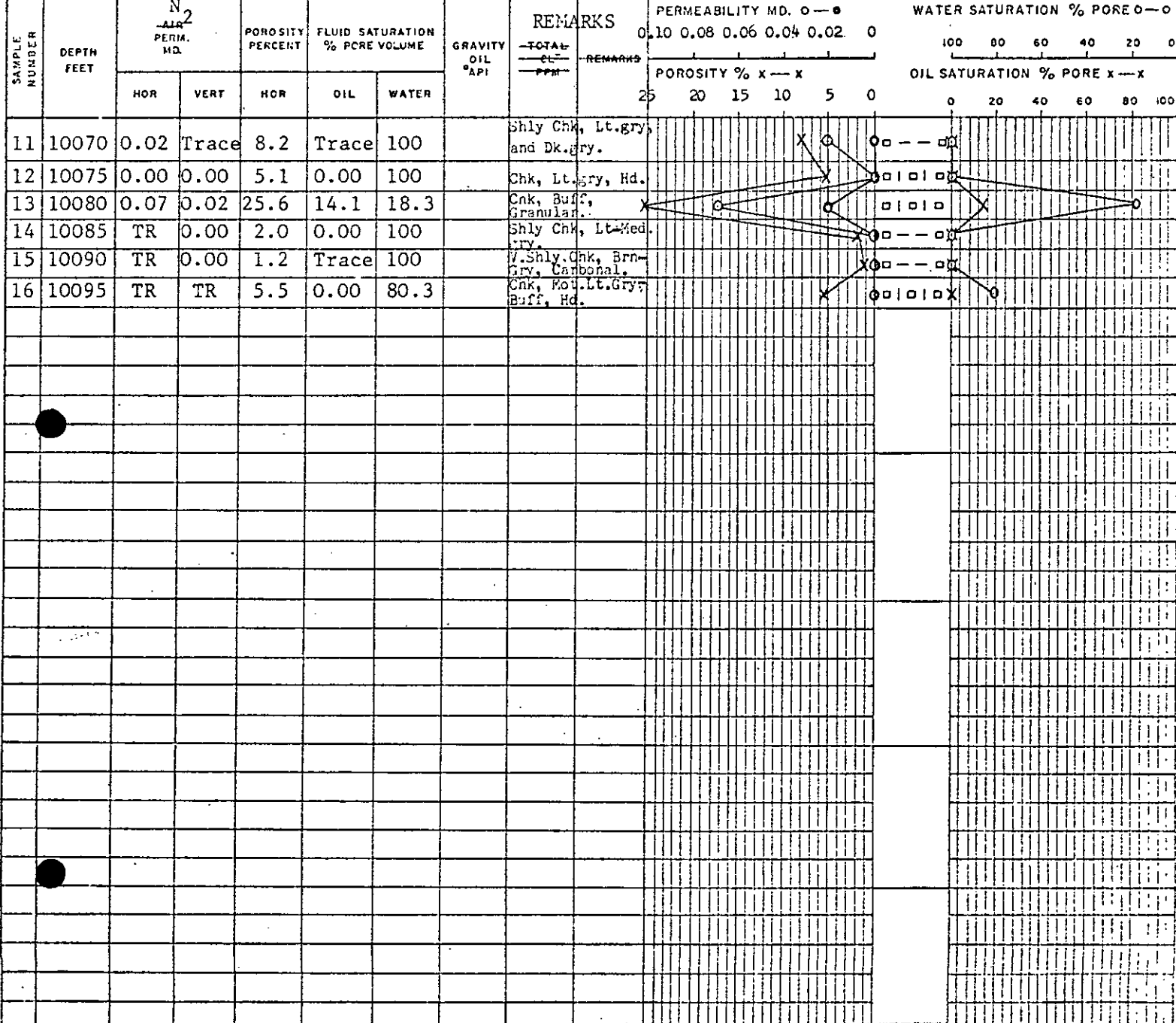
COMPANY Amoco Norway Oil Company
 WELL 2/5-1 Core 5.
 LOCATION/FIELD Norwegian North Sea
 COUNTY _____
 COUNTRY Norway
 REMARKS Porosity by air comparison pycnometer.
Permeability by gaseous nitrogen.
TR <0.01 md. <0.1%.

DATE 8 September 1970.
 DEPTH 10070 ft. TO 10095 ft.
 GEO - ENGINEERS R. E. Morris & B. P. Baxter

| | | | |
|--|------------|--|--------------|
| | SAND | | LIME |
| | SILTY SAND | | CONGLOMERATE |
| | SILTSTONE | | CHALK |
| | SHALE | | SHALY CHALK |
| | | | CHERT |

TABULAR DATA

ANALYSIS GRAPH



ROBERTSON RESEARCH LABORATORIES

LLANDDULAS, ABERGEELE, DENBIGHSHIRE, NORTH WALES

LLANDDULAS 424-5
Telephone STD 0492-66-424

Cables: RESEARCH ABERGEELE
TELEX 61216



CORE ANALYSIS REPORT

COMPANY Amoco Norway Oil Company
 WELL 2/5-1 Core 6.
 LOCATION/FIELD Norwegian North Sea
 COUNTY _____
 COUNTRY Norway
 REMARKS Porosity by air comparison pycnometer.
Permeability by gaseous nitrogen.
TR <0.01 md. <0.1%.

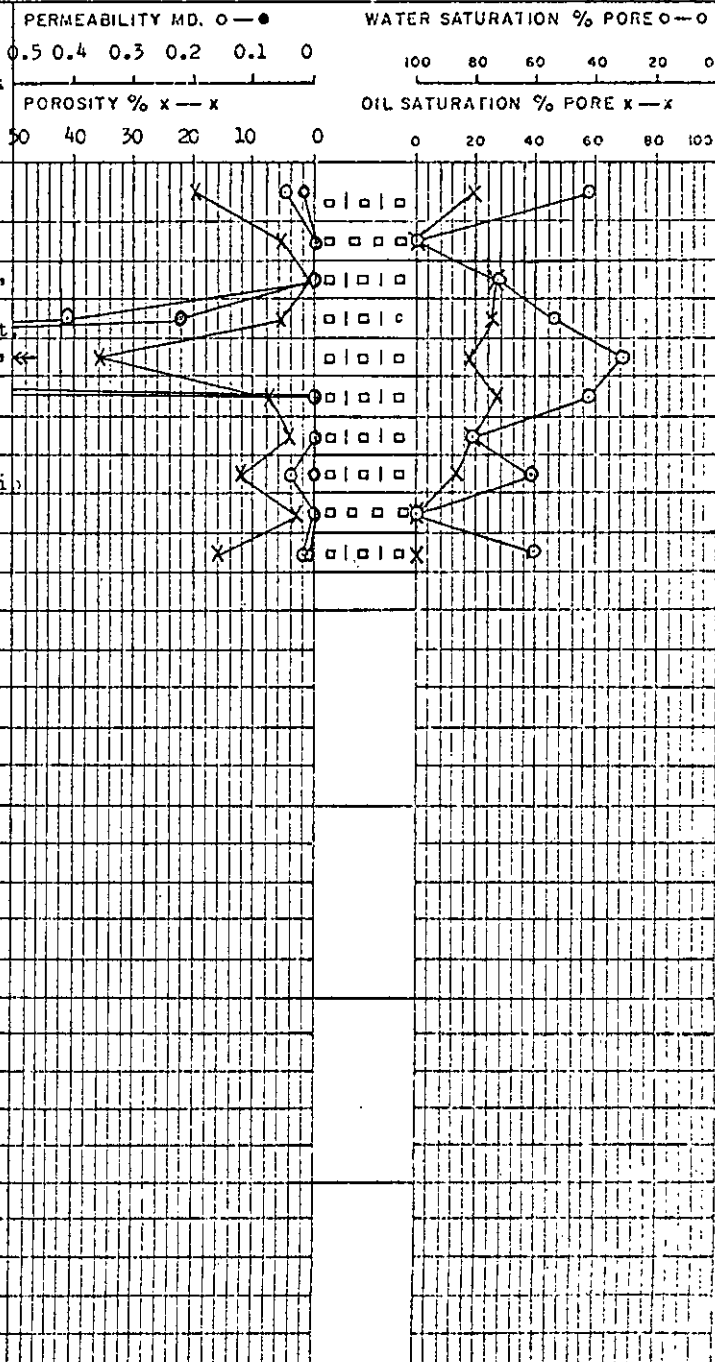
DATE 8 September 1970.
 DEPTH 10100 ft. TO 10140 ft.
 GEO-ENGINEERS R. E. Morris & B. P. Baxter

- | | | | |
|--|------------|--|----------------------|
| | SAND | | LIME |
| | SILTY SAND | | CONGLOMERATE |
| | SILTSTONE | | CHALK |
| | SHALE | | SHALY CHALK CHERT |

TABULAR DATA

| SAMPLE NUMBER | DEPTH FEET | N ₂ AIR PERM. MD. | | POROSITY PERCENT | FLUID SATURATION % PORE VOLUME | | | GRAVITY OIL °API | REMARKS | | PERMEABILITY MD. 0-0 | WATER SATURATION % PORE 0-0 |
|---------------|------------|------------------------------|------|------------------|--------------------------------|------|-------|------------------|------------------------------------|---------|----------------------|-----------------------------|
| | | HOR | VERT | | HOR | OIL | WATER | | TOTAL CL. GRN. | REMARKS | | |
| 17 | 10100 | 0.05 | 0.02 | 19.5 | 19.6 | 42.1 | | | Chk, Buff, Hd, Fract. | | | |
| 18 | 10105 | TR | TR | 5.4 | Trace | 100 | | | Lmst, Lt. Gry, Brittle, Shly. | | | |
| 19 | 10110 | 0.00 | 0.00 | 1.9 | 26.5 | 73.5 | | | Chk, Lt. Gry, Hd, Tr. Sm. Lenses. | | | |
| 20 | 10115 | 0.41 | 0.22 | 5.4 | 25.1 | 54.8 | | | Chk, Yel. Buff, Gran. Much Chert | | | |
| 21 | 10119 | 879 | 279 | 35.9 | 17.2 | 31.7 | | | Chk, Buff, Gran, Soft, Vis. Por. | | | |
| 22 | 10120 | TR | TR | 7.5 | 26.9 | 42.8 | | | Chk, Wh-Lt. Gry, Hd. | | | |
| 23 | 10125 | TR | 0.00 | 4.3 | 19.0 | 81.0 | | | Chk, Wh-Lt. Gry, Hd. | | | |
| 24 | 10130 | 0.04 | TR | 12.3 | 13.5 | 61.5 | | | Chk, Lam, Buff, Tr. Lt. Gry, Shly. | | | |
| 25 | 10135 | TR | TR | 3.2 | 0.0 | 100 | | | Lmst, Lt. Gry, Chky. | | | |
| 26 | 10140 | 0.02 | 0.01 | 16.0 | Trace | 60.8 | | | Chk, Mot. Wh. and Buff, Hd. | | | |

ANALYSIS GRAPH





CORE ANALYSIS REPORT

COMPANY Amoco Norway Oil Company

DATE 17 September 1970

WELL 2/5-1 Core 9

DEPTH 10205 ft. TO 10250 ft.

LOCATION/FIELD North Sea

GEO - ENGINEERS R.E. Morris & B.P. Baxter

COUNTY _____

COUNTRY _____

REMARKS Porosity by Air Comparison Pycnometer
Permeability by Gaseous Nitrogen.

- SAND
- SILTY SAND
- SILTSTONE
- SHALE
- LIME
- CONGLOMERATE
- Chalk

TR <0.01 md and <0.1 %

TABULAR DATA

ANALYSIS GRAPH

| SAMPLE NUMBER | DEPTH FEET | Nitrogen PERM. MD. | | POROSITY PERCENT | FLUID SATURATION % PORE VOLUME | | | REMARKS | PERMEABILITY MD. ○—● | | | | | WATER SATURATION % PORE ○—○ | | | | | | | |
|---------------|------------|--------------------|------|------------------|--------------------------------|------|-------|-----------------------------------|----------------------|-----|-----|-----|-----|-----------------------------|-----|----|----|----|----|---|--|
| | | HOR | VERT | | HOR | OIL | WATER | | 2.5 | 2.0 | 1.5 | 1.0 | 0.5 | 0 | 100 | 80 | 60 | 40 | 20 | 0 | |
| 39 | 10205 | 0.0 | 0.0 | 4.8 | 0.0 | 100. | | Light Grey Argill. Chalk | | | | | | | | | | | | | |
| 40 | 10210 | 0.01 | 0.0 | 8.2 | 14.9 | 85.1 | | White to Pale Grey Chalk | | | | | | | | | | | | | |
| 41 | 10215 | 0.0 | 0.0 | 7.6 | 0.0 | 100. | | A / A | | | | | | | | | | | | | |
| 42 | 10220 | 0.0 | 0.0 | 6.1 | TR | 100. | | A/A Locally Argill. | | | | | | | | | | | | | |
| 43 | 10225 | 0.0 | TR | 4.4 | 0.0 | 100. | | White to Pale Grey Chalk | | | | | | | | | | | | | |
| 44 | 10230 | 0.0 | 0.0 | 2.7 | 0.0 | 100. | | White Chalk | | | | | | | | | | | | | |
| 45 | 10235 | 0.01 | TR | 13.8 | 0.0 | 95.8 | | Pale Grey Chalk | | | | | | | | | | | | | |
| 46 | 10240 | 0.0 | TR | 6.0 | TR | 100. | | A / A | | | | | | | | | | | | | |
| 47 | 10245 | 0.04 | 0.0 | 6.0 | 0.0 | 100. | | Light Grey Chalk & Calcareous Sh. | | | | | | | | | | | | | |
| 48 | 10250 | 1.19 | TR | 10.2 | 0.0 | 100. | | Pale Grey Chalk | | | | | | | | | | | | | |

LLANDDULAS, ABERGELE, DENBIGHSHIRE, NORTH WALES

LLANDDULAS 424-5
Telephone: STD 0492-66-424

Cables: RESEARCH ABERGELE
TELEX 61216



Sheet 7 of 8

CORE ANALYSIS REPORT

COMPANY Amoco Norway Oil Company
WELL 2/5-1 Core 13
LOCATION/FIELD North Sea
COUNTY _____

DATE 18 September 1970
DEPTH 10340 ft. TO 10368 1/2 ft.
GEO - ENGINEERS R.E. Morris & B.P. Baxter

COUNTRY _____
REMARKS Porosity by Air Comparison Pycnometer
Permeability by Gaseous Nitrogen
TR <0.01 md
F = Fracture in Plug.

- SAND
- SILTY SAND
- SILTSTONE
- SHALE
- LIME
- CONGLOMERATE
- Chalk

TABULAR DATA

ANALYSIS GRAPH

| SAMPLE NUMBER | DEPTH FEET | Nitrogen PERM. MD. | | POROSITY PERCENT | FLUID SATURATION % PORE VOLUME | | | REMARKS | PERMEABILITY MD. ●—● | WATER SATURATION % PORE ○—○ | | | | | | |
|---------------|------------|--------------------|------|------------------|--------------------------------|------|-------|---------------------|----------------------|---------------------------------------|-------------------------------------|-----------------------|-------------------|--|--|--|
| | | HOR | VERT | | HOR | OIL | WATER | | | CORRECTIONS XXXXXX XXXX XXXX | CORRECTIONS XXXX XXXX XXXX | CORRECTIONS XXXXXX | POROSITY % X—X | | | |
| | | | | 30 24 18 12 6 0 | | | | | | | | | 0 20 40 60 80 100 | | | |
| 61 | 10340 | 0.02 | TR | 6.8 | 16.4 | 26.0 | | White Chalk | | | | | | | | |
| 62 | 10345 | 0.02 | 0.02 | 10.9 | 23.0 | 37.7 | | Green Chalk to Buff | | | | | | | | |
| 63 | 10350 | 0.60 | 0.52 | 17.1 | 24.0 | 41.1 | | A / A | | | | | | | | |
| 64 | 10356 | 0.67 | 0.53 | 23.2 | 30.8 | 28.5 | | A / A | | | | | | | | |
| 65 | 10361 | 0.43 | 0.24 | 20.2 | 26.3 | 33.0 | | A / A | | | | | | | | |
| 66 | 10365 | 1.35 | 1.54 | 25.0 | 18.2 | 38.2 | | A / A | | | | | | | | |
| 67 | 10368 1/2 | 2.22 | F | 27.0 | 17.9 | 48.6 | | A / A | | | | | | | | |



CORE ANALYSIS REPORT

COMPANY Amoco Norway Oil Company
WELL 2/5-1 Core 14
LOCATION/FIELD North Sea
COUNTY _____
COUNTRY _____
REMARKS Porosity by Air Comparison Pycnometer
Permeability by Gaseous Nitrogen

DATE 18 September 1970
DEPTH 10388 ft. TO 10403 ft.
GEO-ENGINEERS R.E. Morris and B.P. Baxter

..... SAND
----- SILTY SAND
----- SILTSTONE
----- SHALE
OOOO LIME
OOOO CONGLOMERATE
OOOO Chalk

F = Fracture in Plug

TABULAR DATA

ANALYSIS GRAPH

| SAMPLE NUMBER | DEPTH FEET | Nitrogen PERM. MD. | | POROSITY PERCENT | FLUID SATURATION % PORE VOLUME | | | REMARKS | PERMEABILITY MD. ○—○ | | | | | | WATER SATURATION % PORE C—C | | | | | |
|---------------|------------|--------------------|------|------------------|--------------------------------|------|-------|---------------------|--------------------------------|---|---|---|---|-----|------------------------------|----|----|----|---|--|
| | | HOR | VERT | | HOR | OIL | WATER | | POROSITY % x—x | | | | | | OIL SATURATION % PORE x—x | | | | | |
| | | | | 5 | | | | | 4 | 3 | 2 | 1 | 0 | 100 | 80 | 60 | 40 | 20 | 0 | |
| 68 | 10388 | 1.65 | F | 29.0 | 13.2 | 59.6 | | Cream to Buff Chalk | [Graph: Permeability vs Depth] | | | | | | [Graph: Saturation vs Depth] | | | | | |
| 69 | 10393 | 2.89 | 3.35 | 33.9 | 9.1 | 46.3 | | A / A | [Graph: Permeability vs Depth] | | | | | | [Graph: Saturation vs Depth] | | | | | |
| 70 | 10398 | 3.87 | 3.82 | 35.9 | 18.0 | 50.7 | | A / A | [Graph: Permeability vs Depth] | | | | | | [Graph: Saturation vs Depth] | | | | | |
| 71 | 10403 | 0.64 | 0.47 | 24.6 | 26.4 | 21.2 | | Calc. Grey Chalk | [Graph: Permeability vs Depth] | | | | | | [Graph: Saturation vs Depth] | | | | | |

ROBERTSON RESEARCH LABORATORIES

LLANDDULAS, ABERGELE, DENBIGHSHIRE, NORTH WALES

LLANDDULAS 424-5
Telephone STD 0492-66-424

RESEARCH ABERGELE
Cables: TELEX 6121C



CORE ANALYSIS REPORT

COMPANY Amoco Norway Oil Company
WELL 2/5-1 Core 14 continued.
LOCATION/FIELD North Sea
COUNTY _____
COUNTRY _____
REMARKS Porosity by air comparison pycnometer.
Permeability by gaseous nitrogen.

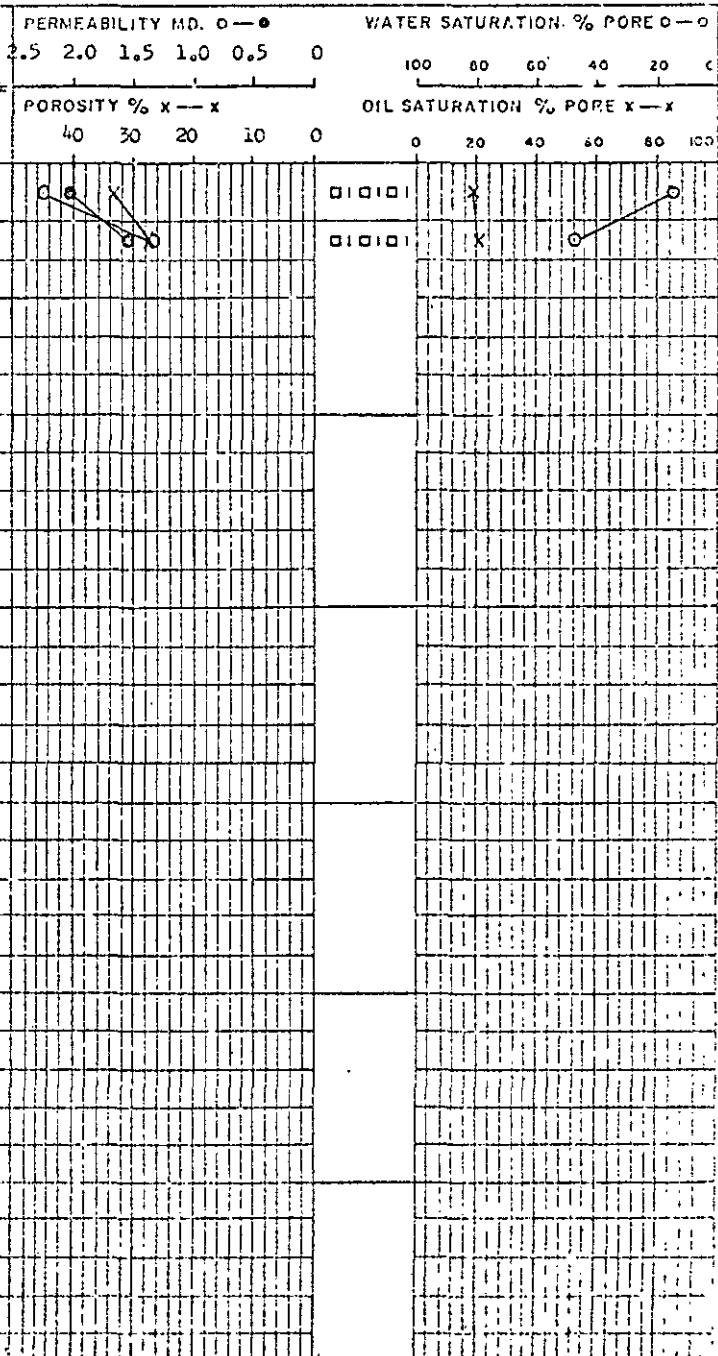
DATE 24 September 1970.
DEPTH 10408 ft. TO 10413 ft.
GEO-ENGINEERS R. E. Morris and
B. P. Baxter

- SAND
- SILTY SAND
- SILTSTONE
- SHALE
- ◻◻◻◻ LIME
- ◻◻◻◻ CONGLOMERATE
- ◻◻◻◻ Chalk
- ◻

TABULAR DATA

| SAMPLE NUMBER | DEPTH FEET | N ₂ AIR PERM. MD. | | POROSITY PERCENT | FLUID SATURATION % PORE VOLUME | | GRAVITY SPECIFIC | REMARKS | PERMEABILITY MD. 0-0 | | | | | WATER SATURATION % PORE 0-100 | | | | | POROSITY % x-x | | | | | OIL SATURATION % PORE x-x | | | | | |
|---------------|------------|------------------------------|------|------------------|--------------------------------|------|------------------|--------------|----------------------|-----|-----|-----|-----|-------------------------------|---|------|----|----|----------------|----|---|----|----|---------------------------|----|---|---|----|----|
| | | HOR | VERT | | HOR | OIL | | | WATER | 2.5 | 2.0 | 1.5 | 1.0 | 0.5 | 0 | 100 | 80 | 60 | 40 | 20 | 0 | 40 | 30 | 20 | 10 | 0 | 0 | 20 | 40 |
| | | | | | | | | | | | | | | | | | | | | | | | | | | | | | |
| 72 | 10408 | 2.24 | 2.03 | 33.3 | 19.1 | 15.1 | | Buff, chalk. | 0 | 0 | | | | | | ◻◻◻◻ | X | | | | | 0 | | | | | | 0 | |
| 73 | 10413 | 1.32 | 1.54 | 27.7 | 20.6 | 48.1 | | Buff, chalk. | 0 | 0 | | | | | | ◻◻◻◻ | X | | | | | 0 | | | | | | 0 | |

ANALYSIS GRAPH



ROBERTSON RESEARCH LABORATORIES

LLANDDULAS, ABERGELE, DENBIGHSHIRE, NORTH WALES

LLANDDULAS 424-5
Telephone: STD 0492-66-424

Cables: RESEARCH ABERGELE
TELEX 61216



CORE ANALYSIS REPORT

COMPANY Amoco Norway Oil Company
 WELL 2/5-1 Core 20
 LOCATION/FIELD North Sea
 COUNTY _____
 COUNTRY _____

DATE 25 September 1970.
 DEPTH 10560 ft. TO 10615 ft.
 GEO - ENGINEERS _____
R. E. Morris & M. A. Bacon

REMARKS Porosity by air comparison pycnometer.
Permeability by gaseous nitrogen.

- | | | | |
|--|------------|--|------------|
| | SAND | | LIME |
| | SILTY SAND | | CONGLOMERA |
| | SILTSTONE | | Chalk |
| | SHALE | | |

TABULAR DATA

ANALYSIS GRAPH

| SAMPLE NUMBER | DEPTH FEET | N ₂ PERM. MD. | | POROSITY PERCENT | FLUID SATURATION % PORE VOLUME | | | GRAVITY OIL °API | REMARKS | PERMEABILITY MD. 0-0.5 | WATER SATURATION % PORE 0-100 | |
|---------------|------------|--------------------------|------|------------------|--------------------------------|------|-------|--------------------------|---------|------------------------|-------------------------------|---------------------------|
| | | HOR | VERT | | HOR | OIL | WATER | | | | POROSITY % x-x | OIL SATURATION % PORE x-x |
| 100 | 10560 | 0.14 | 0.13 | 15.9 | 20.8 | 40.8 | | White to Pale Grey Chalk | | | | |
| 101 | 10565 | 0.16 | 0.14 | 15.7 | 28.8 | 36.2 | | A / A | | | | |
| 102 | 10570 | 0.14 | 0.13 | 15.8 | 23.2 | 33.8 | | Pale Grey Chalk | | | | |
| 103 | 10575 | 0.08 | 0.08 | 14.4 | 25.3 | 42.8 | | A / A | | | | |
| 104 | 10580 | 0.20 | 0.31 | 17.9 | 20.0 | 40.3 | | A / A | | | | |
| 105 | 10585 | 0.21 | 0.25 | 17.5 | 18.3 | 43.0 | | A / A | | | | |
| 106 | 10590 | 0.14 | 0.16 | 15.8 | 17.5 | 41.2 | | A / A | | | | |
| 107 | 10595 | 0.17 | 0.15 | 15.8 | 21.0 | 33.8 | | A / A | | | | |
| 108 | 10599 | 0.22 | 0.19 | 17.9 | 24.3 | 45.6 | | A / A | | | | |
| 109 | 10605 | 0.39 | 0.19 | 17.2 | 25.7 | 39.8 | | A / A | | | | |
| 110 | 10609 | 0.20 | 0.18 | 17.5 | 21.6 | 40.7 | | White to Pale Grey Chalk | | | | |
| 111 | 10615 | 0.09 | 0.08 | 14.1 | 17.9 | 39.2 | | A / A | | | | |

ROBERTSON RESEARCH LABORATORIES

LLANDULAS, ABERGEELE, DENBIGHSHIRE, NORTH WALES

Telephone: LLANDULAS 424-5
STD 0492-66-424

Cables: RESEARCH ABERGEELE
TELEX 61216



CORE ANALYSIS REPORT

COMPANY Amoco Norway Oil Company
 WELL 2/5-1 Core 21
 LOCATION/FIELD North Sea
 COUNTY _____
 COUNTRY _____
 REMARKS Porosity by air comparison pycnometer.
Permeability by gaseous nitrogen.

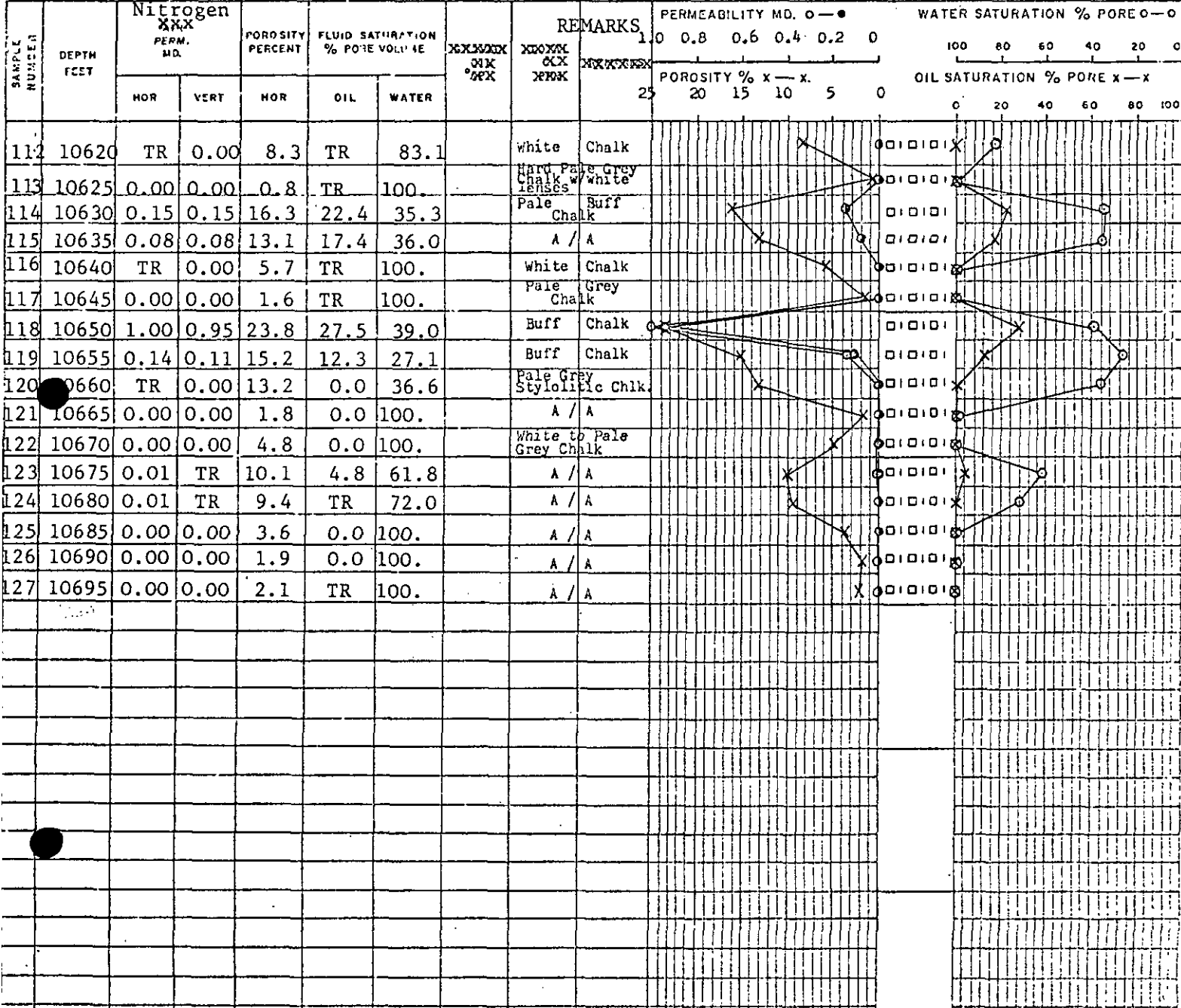
DATE 26 September 1970.
 DEPTH 10620 ft. TO 10695 ft.
 GEO - ENGINEERS R. E. Morris & M. A. Bacon

- | | | | |
|--|------------|--|--------------|
| | SAND | | LIME |
| | SILTY SAND | | CONGLOMERATE |
| | SILTSTONE | | Chalk |
| | SHALE | | |

TR - Trace <0.01 md and <0.1%

TABULAR DATA

ANALYSIS GRAPH



ROBERTSON RESEARCH LABORATORIES

LLANDULAS, ABERGEELE, DENBIGHSHIRE, NORTH WALES

LLANDULAS 424-5
Telephone STD 0492-66-424

RESEARCH ABERGEELE
Cables: TELCX 61216



CORE ANALYSIS REPORT

COMPANY Amoco Norway Oil Company

DATE 26 September 1970

WELL 2/5-1 Core 22

DEPTH 10700 ft. TO 10787 ft.

LOCATION/FIELD North Sea

GEO-ENGINEERS R.E. Morris & M.A. Bacon

COUNTY _____

COUNTRY _____

REMARKS Porosity by Air Comparison Pycnometer.
Permeability by Gaseous Nitrogen

- | | |
|--------------------------------------------------------------------------------------------------------------------------------------|-----------------------------------------------------------------------------------------------------------------------|
| <ul style="list-style-type: none"> SAND ----- SILTY SAND ===== SILTSTONE ----- SHALE | <ul style="list-style-type: none"> □□□□ LIME ○□□○ CONGLOMERATE □□□□ CHALK □ |
|--------------------------------------------------------------------------------------------------------------------------------------|-----------------------------------------------------------------------------------------------------------------------|

TR = Trace <0.01 md and <0.1 %

TABULAR DATA

ANALYSIS GRAPH

