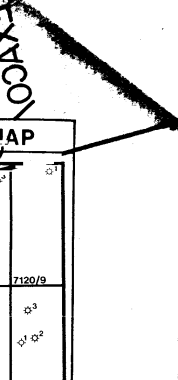


SPECTRA / N. HYDRO/SAGA/PHILIP
TOTAL
7120/7-2 COMPLETION LOG
 Scale 1:500



COORDINATES: 71° 19' 11.49" N
 20° 19' 44.31" E
 K.B.: 22 m
 WATER DEPTH: 241 m
 TOTAL DEPTH: 2523 m
 DEEPEST FORM. PEN.: TRIASSIC
 SPUD DATE: 26.05.1983
 WELL RELEASE DATE: 22.08.1983
 RIG STATUS: PLUGGED AND ABANDONED, GAS DISCOVERY
 RIG: WEST VANGUARD
 CONTRACTOR: K/S SMEDVIG DRILLING COMP II
 GEOLOGISTS: P. TAJET, S. BJERKENES, P. CLINT
 PREPARED BY: M. ASLAGSEN
 DATE: 02.01.1984

VELOCITY SURVEY: 73 LEVELS BETWEEN 2510-400m CONDUCTED BY SCHLUMBERGER.
 SEISMIC: SHOTPOINT NO. 996
 LINE NO. 513-123

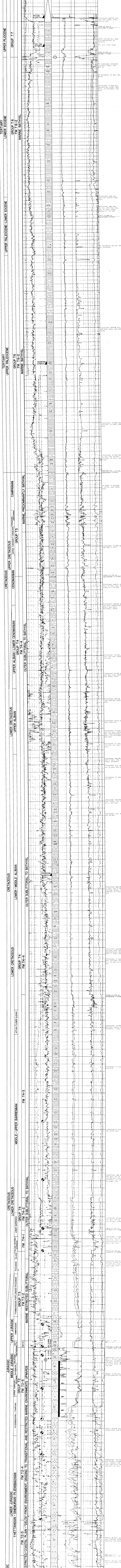
LOGS RUN

ISF/BHC-MSFL-GR	LDL-CNL-GR	DLL-MSFL-GR	CST	CEL-VOL-CCL-GR	RFT	VSP
RUN 1: 471-525m GR to 253m	RUN 1: 441-525m	RUN 1: 2300-2225m SHOT-GR	RUN 1: 1990-855m 27 REC	RUN 1: 800-263m	RUN 1: 2490-2150m	RUN 1: 2510-400m 73 LEVELS
RUN 2: 525-550m GR to 500m	RUN 2: 500-525m	RUN 2: 2225-1990m SHOT-GR	RUN 2: 855-27m	RUN 2: 263-800m	RUN 2: 2150-2490m	RUN 2: 400-2510m
RUN 3: 550-564m GR to 500m	RUN 3: 525-500m	RUN 3: 1512-800m SHOT-GR	RUN 3: 27-855m	RUN 3: 800-263m	RUN 3: 2490-2150m	RUN 3: 2510-400m
RUN 4: 564-550m GR to 500m	RUN 4: 500-525m	RUN 4: 257-1512m SHOT-GR	RUN 4: 855-27m	RUN 4: 263-800m	RUN 4: 2150-2490m	RUN 4: 2510-400m
RUN 5: 550-2523m	RUN 5: 2523-500m	RUN 5: 1512-1502m SHOT-GR	RUN 5: 27-855m	RUN 5: 800-263m	RUN 5: 2150-2490m	RUN 5: 2510-400m

LITHOLOGIC SYMBOLS

SAND SANDSTONE	LIMESTONE	ANHYDRITE	FORAMS	FRITE	MICA
SILT SILTSTONE	CHALK	COAL LIGNITE	WOOD FRAGS	GLAUCONITE	STYLOLITES
CLAY CLAYSTONE	DOLOMITE	SHALE	FOSFILLS GEN'L	CHERT	BURROWS
SHALE	MARL	SALT	SMELL FRAGS	SIDERITE	FRACURES

SHOW DR STAIN HYDROCARBON CUT FLUORESCENCE GAS SHOW



FOR RFT AND TEST RESULTS, SEE COMPLETION REPORT