

AMOCO NORWAY OIL CO.

FINAL WELL LOG
7/1-1A
VERTICAL SCALE: 1:500

LOCATION: 57° 47' 52" N, 02° 09' 56" E
 AREA: Norwegian North Sea
 WATER DEPTH: 270'
 DATE COMPLETED: 3rd July, 1971
 DATE CORRECTED: 5th August, 1971
 TOTAL DEPTH: 9211'
 PLUMMER TOTAL DEPTH: 400'
 SURFACE: 2078' SOKK, 2078' & 1206' 13.36" & 5153'
 CLASSIFICATION: WILCOCK
 METHOD OF COMPLETION: P & A

LITHOLOGICAL SYMBOLS
 Sandstone, Siltstone, Claystone, Shale, Limestone, Dolomite, Gypsum, Anhydrite, Salt, Evaporite, etc.

OPERATIONAL SYMBOLS
 Casing, Drill pipe, Drill collar, Drill bit, etc.

DESCRIPTOR
 PALEOZOIC ROCKS
 PALEOZOIC ROCKS

FORMATION TOPS PICKED BY ELECTRIC LOG
 All measurements and depths in feet.
 Spelled with full name, 1971 & 1970.
 All depths are based on datum of 155'.

SEA BED 307'
 Drilling 32 1/2" pilot hole without failure.
 7 1/2" bit at 434'.
 2 1/2" bit at 467'.

TOP PLEISTOCENE 1200' (-1118')
 Claystone, silty clay, silty sandstone, etc.

TOP EOCENE 2907' (-2078')
 Claystone, silty clay, silty sandstone, etc.

TOP OLIгоцен 3907' (-3078')
 Claystone, silty clay, silty sandstone, etc.

TOP EOCENE 4390' (-4278')
 Claystone, silty clay, silty sandstone, etc.

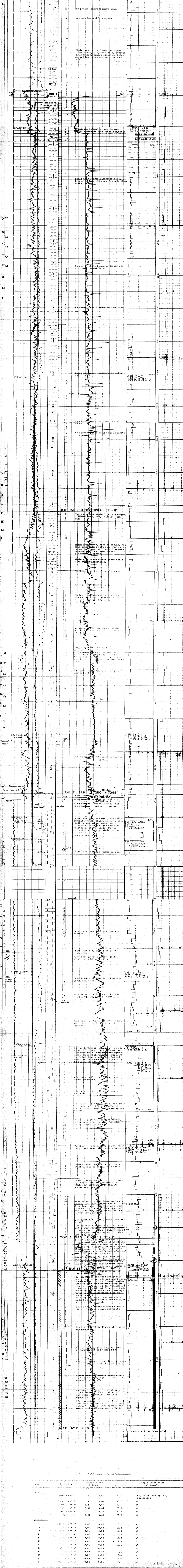
TOP PALEOCENE 6000' (-6308')
 Claystone, silty clay, silty sandstone, etc.

TOP CHALK 7360' (-7368')
 Chalk, silty clay, silty sandstone, etc.

TOP ALBIAN 8600' (-8590')
 Sandstone, siltstone, claystone, etc.

TOP BUNTES SANDS 8725' (-8617')
 Sandstone, siltstone, claystone, etc.

TO 9211' (-9050')
 Sandstone, siltstone, claystone, etc.



COF ANALYSIS VALUES

Sample No.	Depth (ft.)	Resistivity	Porosity	Sample description and remarks	
1001	40	0.40	0.45	24.5	lat. white, chalky, v. sh.
1002	40	0.40	0.45	24.5	atylolitic
1003	40	0.40	0.45	24.5	AA
1004	40	0.40	0.45	24.5	AA
1005	40	0.40	0.45	24.5	AA
1006	40	0.40	0.45	24.5	AA
1007	40	0.40	0.45	24.5	AA
1008	40	0.40	0.45	24.5	AA
1009	40	0.40	0.45	24.5	AA
1010	40	0.40	0.45	24.5	AA
1011	40	0.40	0.45	24.5	AA
1012	40	0.40	0.45	24.5	AA
1013	40	0.40	0.45	24.5	AA
1014	40	0.40	0.45	24.5	AA
1015	40	0.40	0.45	24.5	AA
1016	40	0.40	0.45	24.5	AA
1017	40	0.40	0.45	24.5	AA
1018	40	0.40	0.45	24.5	AA
1019	40	0.40	0.45	24.5	AA
1020	40	0.40	0.45	24.5	AA