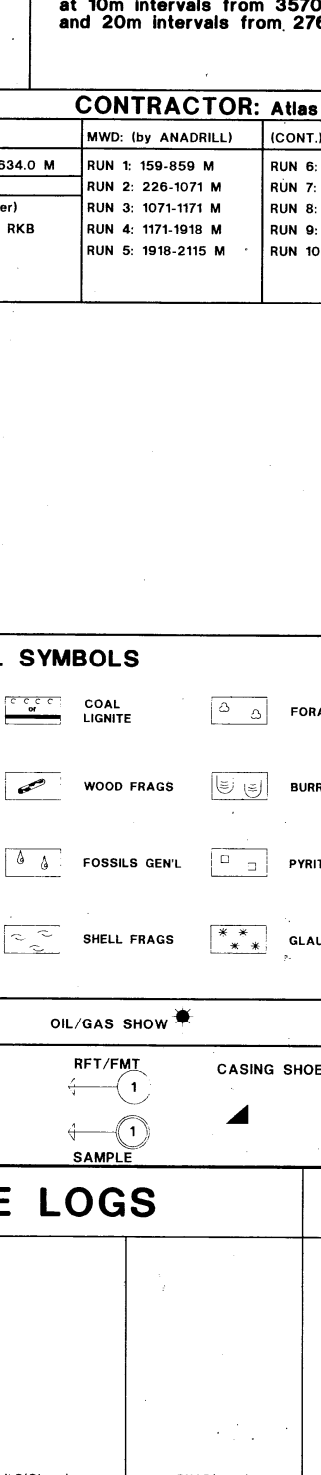


NORSK HYDRO/SAGA PETROLEUM
 PARTNERS
 34/10-36
 GULLFAKS S
 PROSPECT STRUCTURE
COMPLETION LOG
 Scale 1:500

AREA : NORTHERN NORTH SEA
 LICENCE : PL 050
 COORDINATES : 61 DEG 08' 48.48" N
 02 DEG 10' 35.15" E

K.B. : 23 M
 WATER DEPTH : 136 M
 TOTAL DEPTH : 3640 M RKB
 DEEPEST FORM. PEN. : COOK FORMATION
 SPUD DATE : 28.04.92
 RIG RELEASE DATE : 13.07.92

WELL STATUS : P&A OIL DISCOVERY
 RIG : DEEPSEA BERGEN
 CONTRACTOR : ODDFJELL BERLING
 GEOLOGIST : S. BJERKNES/A.G. HAGBY/T. STUMP
 PREPARED BY : E. LANGSETH/T.F. KRISTENSEN/D. ALM
 L. RASMUSSEN
 DATE : 09.02.93

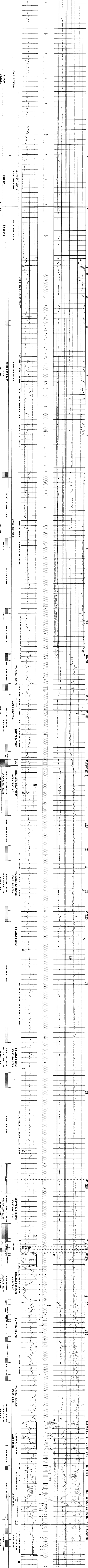
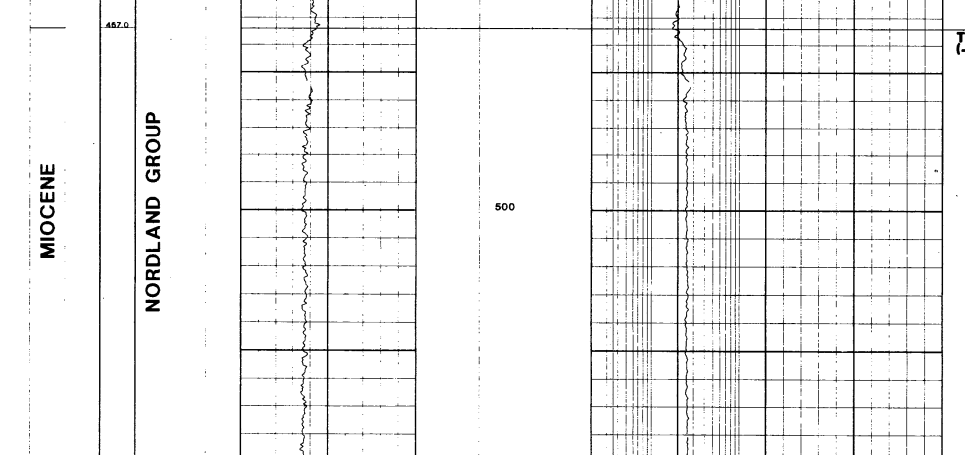


CASING DATA	LEAK OFF TESTS	VELOCITY SURVEY
220 M MD 1056 M MD 2100 M MD 2934 M MD 3625 M MD	1.60 S.G. 1.76 S.G. 1.97 S.G.	Zero Offset Source VSP Survey. A total of 128 levels was recorded at 10m intervals from 3570-2760 and 20m intervals from 2760-150

LOGS RUN		CONTRACTOR: Atlas Wireline
DFL-ACL-GR 18: 1038.0-2087.0 M 28: 2097.5-3017.1 M 30: 3093.0-3637.0 M	CBL-VOL-GR 3A: 3333.0-3393.0 M 3A: 3375.0-3574.0 M 3A: 3393.0-3636.5 M	DFL-MLL-GR 3A: 2993.0-3637.0 M 3A: 3131.5-3563.0 M 3A: 3216.9-3637.0 M

COMMENTS:
 DLL/MLL/GR RUN 3A: High and low resistivities after logging calibration exceeded tolerances.
 FMT/GR RUN 3A: Segregated sample taken at 3363.8 M RKB.
 DIPOLOG/GR RUN 3A: POOH due to sticking problems.
 VSP: Run in 7" liner.

LITHOLOGICAL SYMBOLS	
CONGLOMERATE SANDSTONE SILTSTONE CLAY CLAYSTONE	SHALE LIMESTONE CHALK DOLOMITE



WIRELINE LOGS