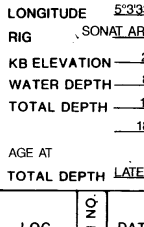


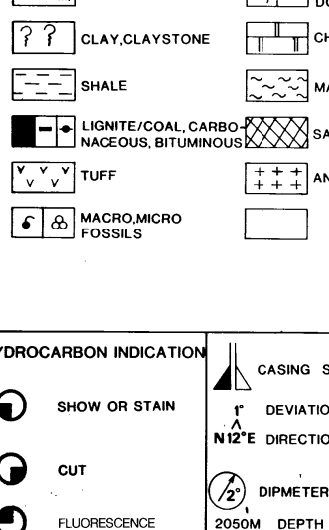
ESSO NORGE a.s.

COMPLETION LOG
 LICENCE: 165 ROUND: 13



107-1

LOCATION MAP



LOCATION COORDINATES
 LATITUDE 27°22'23.7N
 LONGITUDE 02°33'22.2E
 SOUNG ANKAS LOCATE
 RW ELEVATION 235 AMSL
 WATER DEPTH 86.5 BMSL
 TOTAL DEPTH 1890 BKB
 1865.5 SS

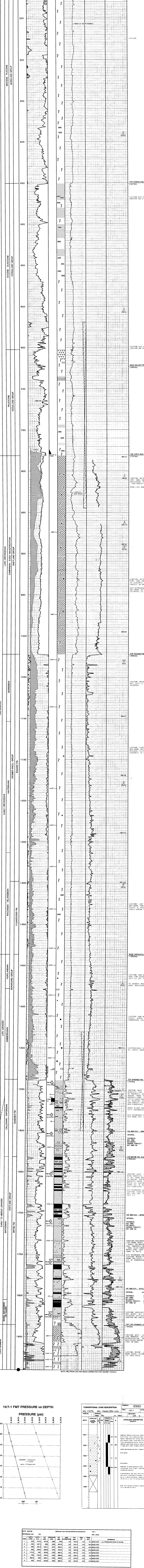
OPERATOR ESSO NORGE AS
 ARRIVED ON LOCATION 27-02-1992
 SPUD DATE 27-02-1992
 REACH T.D. 27-02-1992
 RIG RELEASE 27-02-1992
 WELL STATUS PLUGGED AND ABANDONED BY EXLOG
 MUDLOGGING BY EXLOG
 PREPARED BY RLYONG
 DATE 02-12-1992

SIZE (DEPTH)
 30" 146
 13 3/8" 779

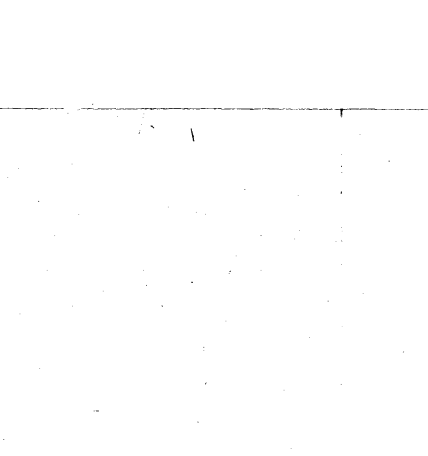
LOG	DATE	INTERVAL (MKB)	MAX. RATE (L/HR)	TYPE	MUD RESISTIVITY (KAH/100FT)	MUD VISCOSITY (CP)
MDP (R)	07-92	57-92	152-794	737	NR	NR
MDP (R)	07-92	157-92	110-856	NR	KCL	NR
MDP (R)	07-92	157-92	125-865	NR	KCL	NR
MDP (R)	07-92	157-92	130-865	383	KCL	NR
MDP (R)	07-92	157-92	130-865	NR	KCL	NR
MDP (R)	07-92	157-92	130-865	NR	KCL	NR
MDP (R)	07-92	157-92	130-865	NR	KCL	NR
MDP (R)	07-92	157-92	130-865	NR	KCL	NR
MDP (R)	07-92	157-92	130-865	NR	KCL	NR
MDP (R)	07-92	157-92	130-865	NR	KCL	NR

LITHOLOGY SYMBOLS	DESCRIPTION
□	CONGLOMERATE
□	SAND, SANDSTONE
□	SILT, SILTSTONE
□	CLAY, CLAYSTONE
□	SHALE
□	LIGNITE/COAL, CARBO-NACEOUS, BITUMINOUS
□	TUFF
□	MACRO/MICRO FOSSILS
□	CHERT, GLAUCOPHANE, PYRITE, MICA
□	LIMESTONE, CALCAREOUS
□	DOLOMITE, DOLOMITIC
□	CHALK
□	SALT
□	ANHYDRITE

HYDROCARBON INDICATION	CASING SHOELINE	CORED INTERVAL	DST	WELL SUMMARY
●	▲	□	○	PRIMARY OBJECTIVE
○	▲	□	○	MIDDLE JURASSIC SANDSTONES
○	▲	□	○	RESULTS: WATER WET, JURASSIC SANDSTONES
○	▲	□	○	
○	▲	□	○	
○	▲	□	○	



107-1-MT PRESSURE vs DEPTH



DEPTH	LITHOLOGY	PROBABILITY (%)	LOG ANALYSIS	COMMENTS
1551	SANDSTONE (CONGLOMERATE) WHITE - LIGHT BROWN, QUARTZ - FINE GRAINED, POOR - MODERATELY SORTED, FRAGILE - HARD, HIGHLY COMPRESSIBLE, SILTY - MEDIUM TO VERY FINE GRAINED, SILTY, DISPERSED SANDSTONE.	100	LOG ANALYSIS - SANKERIS - 1538.5 - 1620m	NO SHOWS
1552	SANDSTONE (CONGLOMERATE) WHITE - LIGHT BROWN, QUARTZ - FINE GRAINED, POOR - MODERATELY SORTED, FRAGILE - HARD, HIGHLY COMPRESSIBLE, SILTY - MEDIUM TO VERY FINE GRAINED, SILTY, DISPERSED SANDSTONE.	100	LOG ANALYSIS - BRINE - 1620 - 1635.5m	NO SHOWS
1553	SANDSTONE (CONGLOMERATE) WHITE - LIGHT BROWN, QUARTZ - FINE GRAINED, POOR - MODERATELY SORTED, FRAGILE - HARD, HIGHLY COMPRESSIBLE, SILTY - MEDIUM TO VERY FINE GRAINED, SILTY, DISPERSED SANDSTONE.	100	LOG ANALYSIS - VESTLAND - 1635.5 - 1850m	NO SHOWS
1554	SANDSTONE (CONGLOMERATE) WHITE - LIGHT BROWN, QUARTZ - FINE GRAINED, POOR - MODERATELY SORTED, FRAGILE - HARD, HIGHLY COMPRESSIBLE, SILTY - MEDIUM TO VERY FINE GRAINED, SILTY, DISPERSED SANDSTONE.	100		
1555	SANDSTONE (CONGLOMERATE) WHITE - LIGHT BROWN, QUARTZ - FINE GRAINED, POOR - MODERATELY SORTED, FRAGILE - HARD, HIGHLY COMPRESSIBLE, SILTY - MEDIUM TO VERY FINE GRAINED, SILTY, DISPERSED SANDSTONE.	100		
1556	SANDSTONE (CONGLOMERATE) WHITE - LIGHT BROWN, QUARTZ - FINE GRAINED, POOR - MODERATELY SORTED, FRAGILE - HARD, HIGHLY COMPRESSIBLE, SILTY - MEDIUM TO VERY FINE GRAINED, SILTY, DISPERSED SANDSTONE.	100		

DEPTH	TEMP	GRAD	TEMP	GRAD	TEMP	GRAD
1	1581	1.18	1581	1.18	1581	1.18
2	1581	1.18	1581	1.18	1581	1.18
3	1581	1.18	1581	1.18	1581	1.18
4	1581	1.18	1581	1.18	1581	1.18
5	1581	1.18	1581	1.18	1581	1.18
6	1581	1.18	1581	1.18	1581	1.18
7	1581	1.18	1581	1.18	1581	1.18
8	1581	1.18	1581	1.18	1581	1.18
9	1581	1.18	1581	1.18	1581	1.18
10	1581	1.18	1581	1.18	1581	1.18