

DIGITAL WIRELINE LOGS PACKAGE
 1984
 This report may be used for reproduction without written permission from Schlumberger

COMPLETION LOG

PROPRIETARY EXPLORESSO

ESSO EXPLORATION NORWAY INC.
 COMPLETION LOG
 Scale 1:500

Well Name: ESSO 15/6-1	Status: PLUGGED AND ABANDONED
Area: North Sea offshore Norway	Well Classification: Wildcat
Total Depth: 5508'	Deepest Penetration: Eocene
Location: Lat. 58° 32' 48.3" N Long. 01° 41' 32.8" E	Date Spudded: Aug 7, 1971
Prepared by: ESSO EXPLORATION NORWAY INC.	Elev. of Datum: 31 ft RT
Date: Oct. 1, 1971	Water Depth: 379 ft.
Revised:	
Date Total Depth Reached: Aug 25, 1971	Casing Date: 30'
Date Open Completed: Sep. 8, 1971	o 20' Contractor
	o 13 7/8' o 401B' GLOBAL MARINE
	o 9 5/8' o 5459'

LOSS RUN

IES - 5504'	BHC - GR 1210' - 5505'	CALIPER 1210' - 4096'
-------------	------------------------	-----------------------

Seismic check shots: NO

LITHOLOGIC SYMBOLS (PROVISIONALLY APPROVED FOR FIELD TESTING)

CLAY (FOLIATED) - CLAYSTONE < 0.3mm	LIMESTONE
CLAY (FOLIATED) OR SHALE < 0.3mm	DOLMITIC LIMESTONE < VERY DOLMITIC
MUDSTONE	CALCARIOUS LIMESTONE < VERY CALCARIOUS
SAND (COARSE) (0.3-2mm) SANDSTONE	DOLOMITIC LIMESTONE
SAND (FINE) (0.25mm) SANDSTONE	MADE
GRAVEL (0.25-2mm) SANDSTONE AND CONGLOMERATE	SPECIFY TYPE OF CARBONATE BY ADDING TO BASIC LIMESTONE OR DOLOMITIC SYMBOL THE APPROPRIATE ABBREVIATION AS SHOWN BELOW
QUARTZ	M - MARINE LIMESTONE
PELLETS	G - GROUND LIMESTONE (FROM GENERAL USE)
LITHIC OR ROCK FRAGMENTS	S - SKELTAL LIMESTONE (FRAGMENTED AND UNIDENTIFIED)
PIRITE	P - PELLETTAL LIMESTONE
SIDERITE	F - FRAMEBUILDER LIMESTONE
CHERT	D - DOLOMITIC LIMESTONE
COAL	K - KALK
CARBONATE MATTER	O - OPHICAL LIMESTONE
ORGANIC	L - LUMP LIMESTONE
PHOSPHATIC	M - MICROSPALLING OR MICROGRAINED < 0.3mm
VOLCANIC ASH OR BENTONITE	IGNEOUS ROCKS
MICA	METAMORPHIC ROCKS IN GENERAL WRITE OUT THE NAME WHERE THE SPECIFIC TYPE IS KNOWN
GYPSUM	METAMORPHIC ROCKS IN GENERAL WRITE OUT THE NAME WHERE THE SPECIFIC TYPE IS KNOWN
ANHYDRITE	
HALITE	
POTASSIUM OR MAGNESIUM SALTS	

CEMENT PLOT

SEA LEVEL 350'

TOP OF CEMENT NUMBER OF CORE C-1

DIP ON CORE 15'

NO CORE RECOVERY

STATE COLLAR 3000'

TUBING DEPTH 2 3/4" 350'

OPEN PERFORATIONS 2 3/4" 4300'

ROUGH PERFORATION TEST

SWABS OR FLOW TEST

PERFORATION RETAINER 4800'

PERFORATION NUMBER 1200' 4800'

CASING DEPTH 1200' 4800'

DEPTH 1200' 4800'

FORMATION PERFORATION 1200' 4800'

LINE NUMBER

REMARKS: Repeat section from 5500' - C.S. run without wire casing depth.

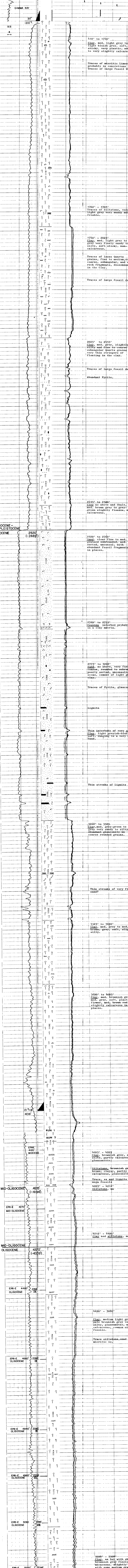
Changes in Mud Type or Addition Samples

Depth	Type Log	Depth	Scale Change	Scale Up Hole	Scale Down Hole
1200'		1200'			

SPONTANEOUS POTENTIAL millivolts

RESISTIVITY ohms.m/m

INDUCTION LOG



SPONTANEOUS POTENTIAL millivolts

RESISTIVITY ohms.m/m

COMPANY: ESSO EXPLORATION NORWAY INC. SCHL 18 5508

WELL: 15/6-1 SCHL TO 5508

FIELD: WILLCAT DKB TO 5508

COUNTY: NORWAY STATE: NORTH SEA OL 277