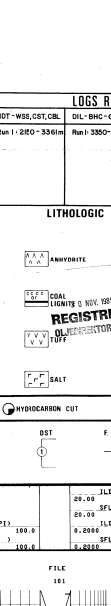


COORDINATES: 50° 14' 36.50" N, 12° 52' 46.77" E
WATER DEPTH: 25m
TOTAL DEPTH: 4450m
PEN: PERMIAN
SPUD DATE: 21 June 1980
RIG RELEASE DATE: 24 December 1980
RIG STATUS: Plugged and abandoned
CONTRACTOR: Ross Drilling Co.
GEOLOGIST: KHJ, JHN, OMS, KAS, RAL, DM, TK, JMO, TEL
PREPARED BY: O.V. Greiner, J. Kristiansen
DATE: 24 July 1981



LOGS RUN (NUMBER, DEPTH IN M, GR)
Table with columns for log type (RF, PSC, HOT, DL, CMC) and depth ranges.

LITHOLOGIC SYMBOLS
Legend for lithological symbols including sand, shale, limestone, etc.

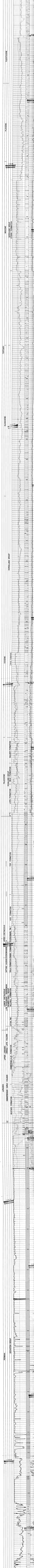
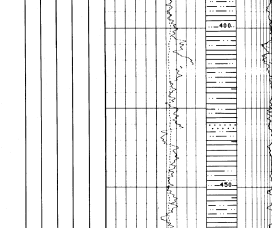


Table with columns: NAME, UNIT, VALUE, UNIT, VALUE. Contains well parameters like depth, diameter, etc.

