



statoil

WELL PROGNOSIS SHEET

LOCATION PLAT 6 4

COMPANY: STATOIL/ESSO

WELL PROGNOSIS

15

15/12-3

AUTHOR: OG/OJA APPROVED DIM DATE: 3/3-80

COORDINATES 58° 14' 35.1" N, 01° 52' 45.8" E

K.B.E.: 25 m COUNTRY: NORWAY

WATER DEPTH: 86 m AREA: NORTH SEA

TOTAL DEPTH: 4900 m SEISMIC POINT: 511 324

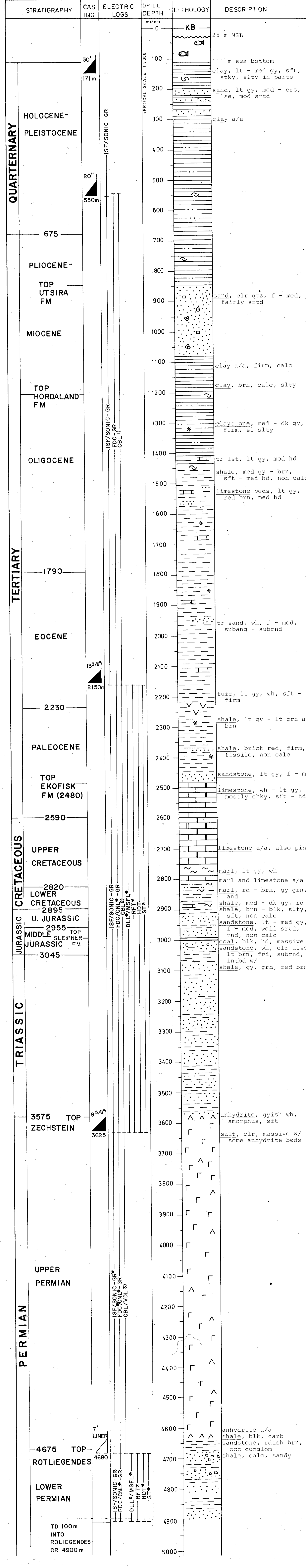
MUD LOGGING CO.: BAROID SEISMIC SHOT POINT: 1720

OBJECTIVE HORIZONS: PRIMARY: UPPER JURASSIC SANDSTONE
SECONDARY: LOWER PERMIAN SANDSTONE (ROTLIEGENDES) AND DANIAN SANDSTONE

CORES: MINIMUM ONE CORE IN JURASSIC SANDSTONE AND ONE CORE IN ROTLIEGENDES SANDSTONE

FORMATION TESTS: IF SIGNIFICANT HYDROCARBON SHOWS ARE ENCOUNTERED

SIDEWALL CORES: OVER ZONES OF INTEREST



LOGGING COMMENTS:

- * OPTIONAL
 - 1) IN 13 3/8" Csg WHEN LOGGING 12 1/2" HOLE
 - 2) IN 9 5/8" Csg AFTER Csg JOB
 - 3) IN 7" LINER WHEN LOGGING 6" HOLE
- VELOCITY SURVEY IF LOGGING IN TRIASSIC*
VELOCITY SURVEY AT TD.