

NORVASK HYDRO/SAGA PETROLEUM
34/10 - 12
COMPLETION LOG
 Scale 1:500

COORDINATES: 61° 09' 26.69" N, 02° 06' 21.72" E
K.B.: 25 m
WATER DEPTH: 136 m
TOTAL DEPTH: 2800 m
DEPUSIT FORM: PEN - STATFJORD FM
RIG RELEASE DATE: JULY 16, 1981
RIG RELEASE DATE: SEPT. 14, 1981
WELL STATUS: PLUGGED AND ABANDONED
RIG: NEPTUNO NORDRAUG
CONTRACTOR: ROSS DRILLING CO. A/S
GEOLOGISTS: P. LINDVÅG, E. UNDERSRUD, J.M. NORDVÅG
PREPARED BY: K. PEDERSEN / E. UNDERSRUD
DATE: 14th of February 1982



CASING DATA:
 30 at 225 m LEAK OFF.
 20 at 296 m 1,30 s.g.
 16 at 865 m 1,56 s.g.
 13/3/8 at 1545 m 1,74 s.g.
 9/5/8 at 1934 m 1,94 s.g.

VELOCITY SURVEY: 20 checksots, levels from 1010m to 2800m (R)

LOGS RUN

LOG	DEPTH (m)	CELS.	VOL.	CEL.	VOL.
1ST - SONIC - GR - SP	FD/CNL - GR - CAL	HOT (Continuous dip)	CEL - VOL	RST - GR	
RUN 1 160 m - 189 m	RUN 1 225 m - 850 m	RUN 1 1502 m - 2784 m	RUN 1 150 m - 1543 m	RUN 1 296 m - 860 m	
RUN 2 189 m - 195 m	RUN 2 850 m - 1056 m	RUN 2 2784 m - 2800 m	RUN 2 1543 m - 1643 m	RUN 2 860 m - 1056 m	
RUN 3 195 m - 1945 m	RUN 3 1056 m - 1945 m		RUN 3 1643 m - 1932 m	RUN 3 1056 m - 1550 m	
RUN 4 1945 m - 2009 m	RUN 4 1945 m - 2784 m		RUN 4 1932 m - 1934 m	RUN 4 1550 m - 1775 m	
RUN 5 2009 m - 2800 m					

LITHOLOGIC SYMBOLS

SANDSTONE	LIMESTONE	ANHYDRITE	FRAMS	PYRITE
SILTSTONE	CHALK	SHALE	WOOD FRAGS	GLAUCONITE
CLAY CLAYSTONE	DOLOMITE	FAULT	FOSSILS GEN'L	CHERT
SHALE OR STAIN	MARL	SALT	SHELL FRAGS	SIDERITE
		HYDROCARBON CUT	FLUORESCENCE	

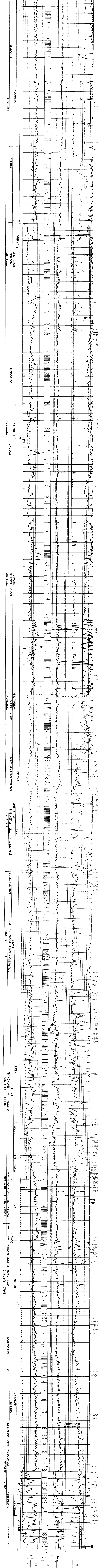
SEAWALL CORES: REC, NO REC
CORES: CORE NO, R.F.T.
CASING SIDE LINER: R.F.T.

PARAMETERS

NAME	VALUE	UNIT	NAME	VALUE	UNIT
COST	100.0	US\$T	SEC	1.000	SEC
WELL	100.0	US\$T	SEC	1.000	SEC
WELL	100.0	US\$T	SEC	1.000	SEC

SEAL/OVER

GR (COMP)	20.00	US\$T	2000.	TENSILE	0.0
GR (WY.)	100.0	US\$T	2000.	CLIP (FORM)	0.0
				CLIP (FORM)	0.0



NO RESULTS

NO	DEPTH (m)	SYDOUT. PRESS (PSI)	VALVATION PRESS (PSI)	SYDOUT. PRESS (PSI)
1	2206	9472	8849	5100
2	2311	10184	8824	1330
3	2831	10229	8701	5030