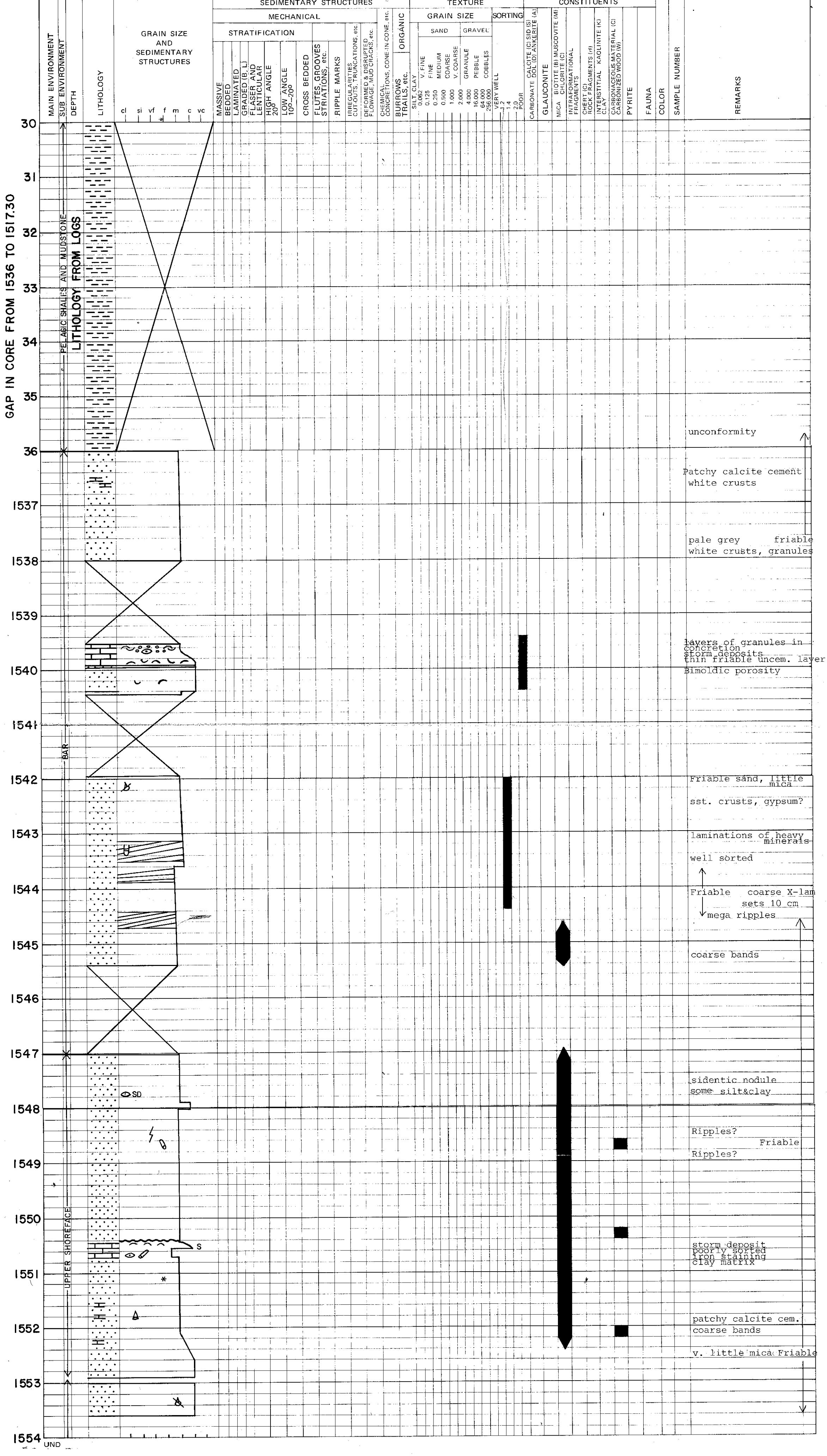


# SPECIAL CORE DESCRIPTION

FIELD: WELL NO. 31/2-5 AREA NORTH SEA  
 CORE NO. 4 - 7 INTERVAL from 1536 to 1553.65  
 FORM: GEOLOGIST H. I. / Ø.K. DATE DEC. 1981



GAP IN CORE FROM 1536 TO 1517.30

UND