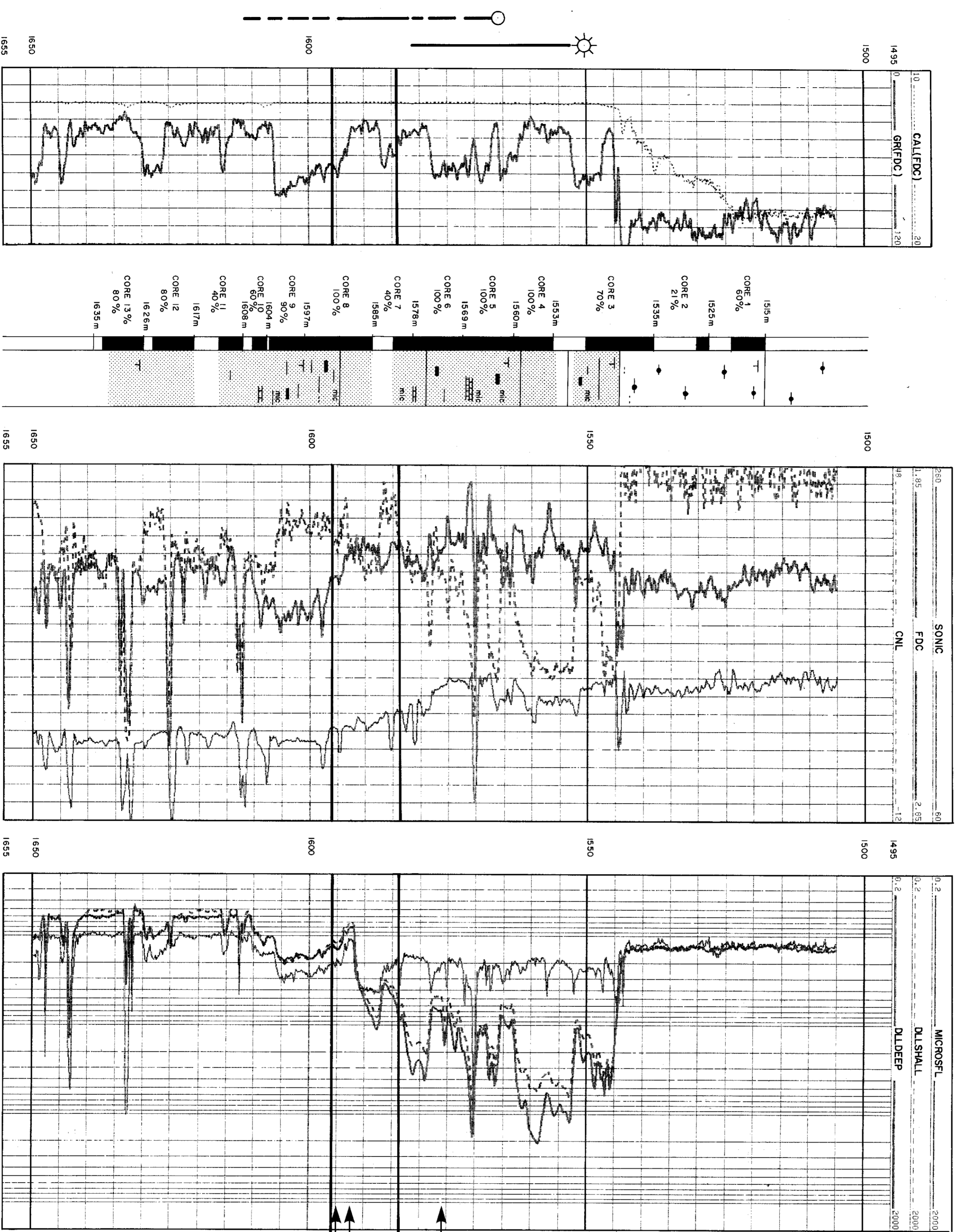


31/2-2 : RESERVOIR SECTION



TOP RESERVOIR 1544 m
 RFT 1548 m (GAS)

GAS PRESSURE GRADIENT TO 1578 m
 RFT 1571.5 m (GAS)

1579 m G.O.C.
 RFT 1587.5 m (OIL)
 RFT 1590 m (OIL)

1591 m O.W.C.
 RFT 1590 m (OIL)

WATER PRESSURE GRADIENT UP TO 1593 m

GAS ZONE
 1544 - 1579 m 35m
 Ø 30 - 32 %
 HC SAT. 60% - >90%

OIL ZONE
 1579 m - 1591 m 12m
 Ø 30 - 32 %
 HC SAT. Av. 65%

a.s. Norske Shell
 EXPLORATION & PRODUCTION FORUS

31/2 - 2

PRELIMINARY LOG CORRELATION OF RESERVOIR SECTION

AUTHOR: EPT/13	ENCL: 2
REPORT NO.: NSRP 94	DATE: SEPT. 80
	DRAW. NO.: 6.678/9