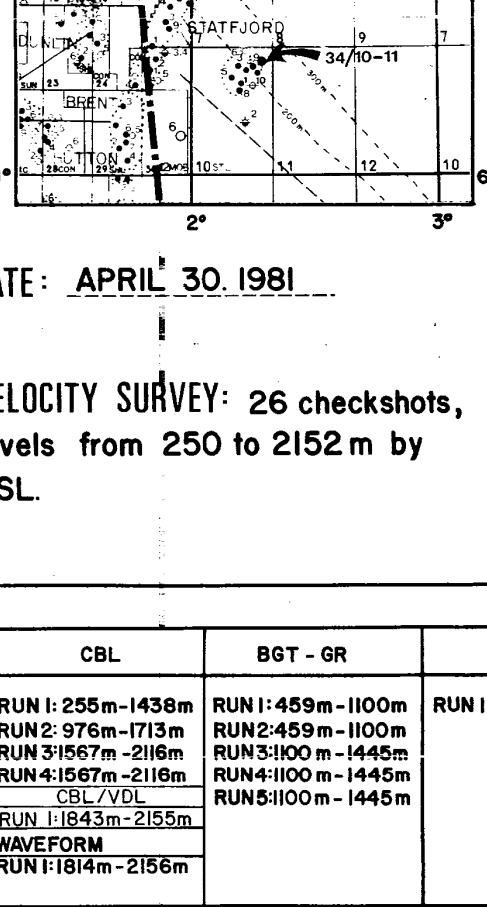


statoil /NORSK HYDRO/SAGA PETROLEUM
34/10-II
COMPLETION LOG
 Scale 1:500

COORDINATES: 61° 13' 20.80" N
 02° 17' 32.80" E
 K.B. : 25m
 WATER DEPTH: 229m
 TOTAL DEPTH: 2155m
 DEEPEST FORM. PEN.: TRIASSIC
 SPUD DATE: OCT. 23. 1980
 RIG RELEASE DATE: MARCH 5. 1981
 WELL STATUS: PLUGGED & ABANDONED
 RIG: ROSS RIG
 CONTRACTOR: ROSS DRILLING CO A/S
 GEOLOGISTS: K.H. JAKOBSEN, H. NYGARD, R. HEUM, O. VEBER, L. KRISTENSEN
 PREPARED BY: M. HELLE
 DATE: APRIL 30. 1981



CASING DATA:
 at 315 m
 at 459 m
 16" liner at 1100 m
 13" at 1438 m
 11" at 1715 m
 liner at TD

VELOCITY SURVEY: 26 checkshots,
 levels from 250 to 2152 m by
 SSL

LOGS RUN

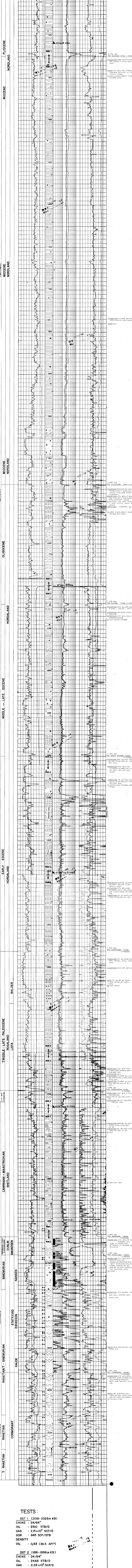
ISP/SO/NC-GR-SP	FDC/CL-GR-CAL	DLL-MSFL-GR	HDT (Continus depth)	CBL	BST-GR	NGS
RUN 1 315 m - 325 m	RUN 1 315 m - 324 m	RUN 1 1820 m - 2157 m	RUN 1 1715 m - 2155 m	RUN 1 225 m - 1435 m	RUN 1 459 m - 1100 m	RUN 1 1715 m - 2155 m
RUN 2 459 m - 800 m	RUN 2 459 m - 100 m	1 00-20	GEODIP	RUN 2 576 m - 1713 m	RUN 2 459 m - 1100 m	RUN 2 459 m - 1100 m
RUN 3 800 m - 1444 m	RUN 3 800 m - 1444 m			RUN 3 576 m - 1713 m	RUN 3 459 m - 1100 m	RUN 3 459 m - 1100 m
RUN 4 1444 m - 1444 m	RUN 4 1438 m - 1670 m			RUN 4 1670 m - 2155 m	RUN 4 1100 m - 1444 m	RUN 4 1100 m - 1444 m
RUN 5 1444 m - 1670 m	RUN 5 1438 m - 1670 m			RUN 5 1670 m - 2155 m	RUN 5 1100 m - 1444 m	RUN 5 1100 m - 1444 m
RUN 6 1670 m - 1715 m	RUN 6 1715 m - 2155 m			RUN 6 1715 m - 2155 m	RUN 6 1100 m - 1444 m	RUN 6 1100 m - 1444 m
RUN 7 1715 m - 1896 m				RUN 7 1896 m - 2155 m		
RUN 8 1896 m - 2155 m				RUN 8 1896 m - 2155 m		

LITHOLOGIC SYMBOLS

SAND SANDSTONE	LIMESTONE	ANHYDRITE	FORAMS	PYRITE	MICA
SILT SILTYSTONE	CHALK	COAL	WOOD FRAGS	GLAUCONITE	STYLOLITES
SLAY CLAYSTONE	DOLOMITE	TOFF	FOSSELS GEN'L	CHELT	BURROWS
SHALE	MARL	SALT	SHELL FRAGS	SIDERITE	FRACTURES

SYMBOLS

SHOW OR STAIN	HYDROCARBON CUT	FLUORESCENCE	GAS SHOW
SIDEWALL CORES	CORES	DST	F.I.T.
REC. REC. W/SHOW	CORE NO.		CASING SIDE LINER
			BIT



TESTS:

TEST	DEPTH (m)	DATE	CHOKE	OIL	GAS	GOR	DENSITY
DST 1	2018-2028	KB	24/64	2510	2.15 x 10 ¹⁰	845	0.83 (36.5 API)
DST 2	1891-1896	KB	24/64	2448	2.28 x 10 ¹⁰	948	0.83 (36.5 API)

FIT NO 1: (2018m) 3000 cc OIL SP.GR - 0.85 (35° API)
 7000 cc WATER
 FIT NO 2: (2050m) NO RECOVERY