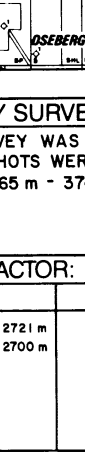




N. HYDRO / SAGA PETROLEUM
34/10-20 GAMMA STRUCTURE
 COMPLETION LOG
 Scale 1:500

AREA: NORTH SEA
 LICENCE: PL 050
 COORDINATES: 61° 20' 39" N, 0° 17' 46.74" E
 K.B.: 22 m
 TOTAL DEPTH: 134.5 m
 DEEPEST FORM. PEN.: CROME KNOLL GR.
 SPUD DATE: 23.10.83
 W.O. RELEASE DATE: 23.04.84
 WELL STATUS: P & A
 RIG: ROSS ISLE
 CONTRACTOR: ROSS DRILLING
 GEOLOGISTS: M. WELLS, M. PROBERT, M. GRACE, A. OPSTAD

PREPARED BY: I. MORVING
 LEAK OFF TESTS: VELOCITY SURVEY, SCHLUMBERGER
 NOT PERFORMED
 NO CHECKPOINTS WERE TAKEN WITH LEVELS BETWEEN 165 m - 3745 m KB



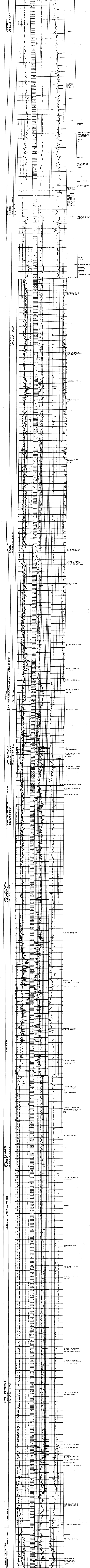
LOGS RUN				CONTRACTOR: SCHLUMBERGER			
LF	UP	DOWN	DATE	LF	UP	DOWN	DATE
100	100	100	23/10/83	100	100	100	23/10/83
101	101	101	23/10/83	101	101	101	23/10/83
102	102	102	23/10/83	102	102	102	23/10/83
103	103	103	23/10/83	103	103	103	23/10/83
104	104	104	23/10/83	104	104	104	23/10/83
105	105	105	23/10/83	105	105	105	23/10/83
106	106	106	23/10/83	106	106	106	23/10/83
107	107	107	23/10/83	107	107	107	23/10/83
108	108	108	23/10/83	108	108	108	23/10/83
109	109	109	23/10/83	109	109	109	23/10/83
110	110	110	23/10/83	110	110	110	23/10/83
111	111	111	23/10/83	111	111	111	23/10/83
112	112	112	23/10/83	112	112	112	23/10/83
113	113	113	23/10/83	113	113	113	23/10/83
114	114	114	23/10/83	114	114	114	23/10/83
115	115	115	23/10/83	115	115	115	23/10/83
116	116	116	23/10/83	116	116	116	23/10/83
117	117	117	23/10/83	117	117	117	23/10/83
118	118	118	23/10/83	118	118	118	23/10/83
119	119	119	23/10/83	119	119	119	23/10/83
120	120	120	23/10/83	120	120	120	23/10/83

COMMENTS:
 THE WELL WAS ABANDONED DUE TO TECHNICAL DIFFICULTIES CONCERNING HIGH POREPRESSURE AND RELATIVELY LOW FORMATION STRENGTH.
 THE INTERVAL FROM SEABED TO 1026 mKB WAS LOGGED WITH A MW LOG FROM EXLOG.
 THE LITHOLOGY FOR THE SCHLUMBERGER LOGS (1026m-3745mKB) YOU WILL FIND BELOW.

LITHOLOGICAL SYMBOLS

CONGLOMERATE	SAND	GRAVEL	GRAVELLY SAND	SANDY GRAVEL	SAND
GRAVEL	SANDY GRAVEL	GRAVELLY SAND	SAND	SANDY GRAVEL	GRAVELLY SAND
SAND	SANDY GRAVEL	GRAVELLY SAND	SAND	SANDY GRAVEL	GRAVELLY SAND
SAND	SANDY GRAVEL	GRAVELLY SAND	SAND	SANDY GRAVEL	GRAVELLY SAND

SYSTEM STAGES: QUATERNARY, TERTIARY, CENOZOIC
 SERIES: QUATERNARY, TERTIARY, CENOZOIC
 MEMBER: QUATERNARY, TERTIARY, CENOZOIC



COMMENTS: THE WELL WAS ABANDONED DUE TO TECHNICAL DIFFICULTIES CONCERNING HIGH POREPRESSURE AND RELATIVELY LOW FORMATION STRENGTH. THE INTERVAL FROM SEABED TO 1026 mKB WAS LOGGED WITH A MW LOG FROM EXLOG. THE LITHOLOGY FOR THE SCHLUMBERGER LOGS (1026m-3745mKB) YOU WILL FIND BELOW.