

**Norsk Hydro**  
 Oslo - Norway

**Completion log**  
 Scale 1500

**Well: 31/4-4**

Location map: 30, 31, 32  
 Coordinates: 60° 40' 00" N, 03° 09' 54.12" E  
 Elevation K.B.: 325m  
 Water Depth: 248 (MSL)  
 Total Depth (Drill): 3154m  
 Formation at Total Depth: Stafford Formation

Country: Norway  
 Licence: 050  
 Owners: Norsk Hydro/Statol/BV/Esso/Arco.  
 Field: Statfjord

Date Spudded: December 10, 1980  
 Reached Total Depth: February 11, 1981  
 Completed: February 18, 1981  
 Well Status: Plugged and abandoned as a dry hole.

Rig: Nordfryn  
 Golar No.:  
 Contracting Company: Geohornt Owen  
 Geologists: M. Henderson, R.E. Nilsen, J.H. Skogen, A. Davies.  
 Prepared by: A. Davies, S.I. Leivestad.  
 Date: July 30, 1981.

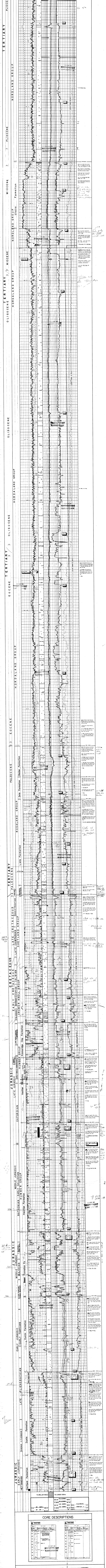
Casing Records:  
 30" at 324m  
 13 1/2" at 1481m  
 9 5/8" at 1797m  
 7 1/2" at 2113m

Comments:

FORMATION	DEPTH (m)	HT	RFT	GR	VELOCITY SURVEY
2 1/2" SPT 988 OLEBERT STORÅSET	2000 - 3083	2000	2147.54	320	3000 - 3400

**Legend**

ENVIRONMENT	WELL	WATER	RESISTIVITY	SANDY SAND	CONCRETE
MANAGEMENT	CONCRETE	WATER	SANDY SAND	SANDY SAND	CLAY
CLAY	CLAY	CLAY	CLAY	CLAY	CLAY
CLAYSTONE	CLAYSTONE	CLAYSTONE	CLAYSTONE	CLAYSTONE	CLAYSTONE



**CORE DESCRIPTIONS**

DEPTH (m)	DESCRIPTION
2000	2 1/2" SPT 988 OLEBERT STORÅSET
2113	7 1/2" casing
2147.54	RFT
2197	9 5/8" casing
2200	2 1/2" SPT 988 OLEBERT STORÅSET

**RFT RESULTS**

NO.	DEPTH (m)	PHI (LOG)	PHI (CALC)	PHI (CORR)
4400	2000	4399	4403	4403
4401	2060	4411	4419	4419
4402	2120	4420	4428	4428
4403	2180	4429	4437	4437
4404	2240	4438	4446	4446
4405	2300	4447	4455	4455
4406	2360	4456	4464	4464
4407	2420	4465	4473	4473
4408	2480	4474	4482	4482
4409	2540	4483	4491	4491
4410	2600	4492	4500	4500
4411	2660	4501	4509	4509
4412	2720	4510	4518	4518
4413	2780	4519	4527	4527
4414	2840	4528	4536	4536
4415	2900	4537	4545	4545
4416	2960	4546	4554	4554
4417	3020	4555	4563	4563
4418	3080	4564	4572	4572
4419	3140	4573	4581	4581
4420	3200	4582	4590	4590