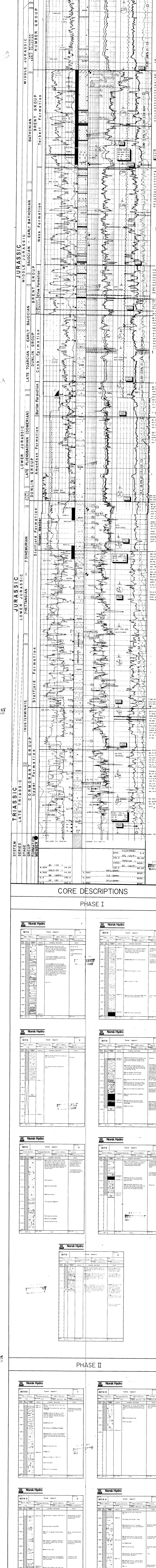
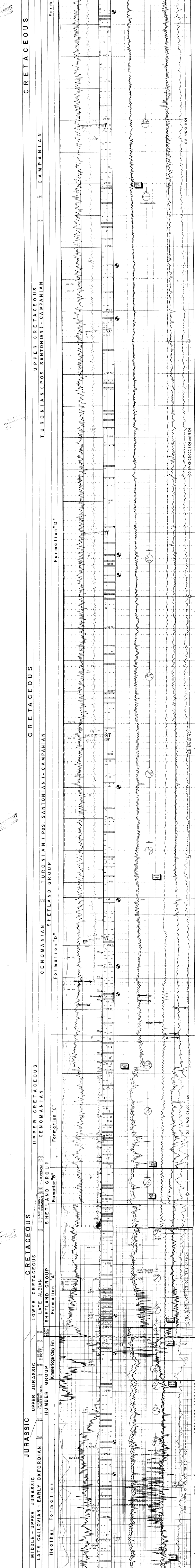
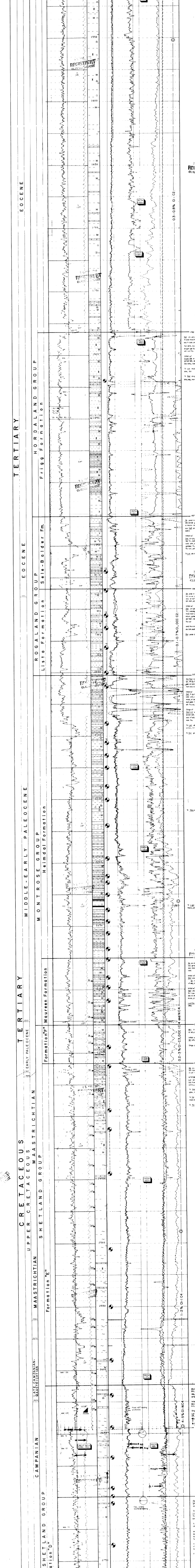
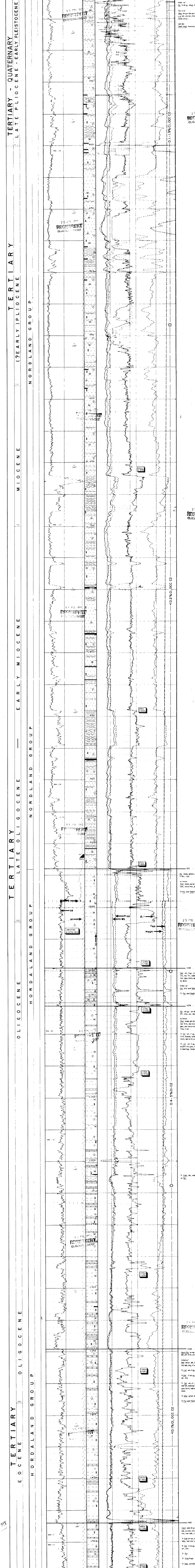


Geographic Information:
Location: P.1
Coordinates: 62°51' N, 15°21' E
Elevation: 625m
Area: 437m² Phase 1; 496m² Phase 2; 486m² Phase 3

Well Details:
Name: 30/7-8
Depth: 1000m
Diameter: 115mm
Casing: 115mm
Mud: 200ml/min
Mud Weight: 1.20
Mud Type: Water Based

Log Run Phases:
Phase 1: Nov 86, 1986
Phase 2: Sept 23, 1986
Phase 3: April 3, 1988
Phase 4: Jan 30, 1988



CORE DESCRIPTIONS

PHASE I

Core No.	Depth (m)	Description
1	1000	SANDSTONE, coarse, well-sorted
2	1005	MUDSTONE, silty
3	1010	SANDSTONE, medium, well-sorted
4	1015	MUDSTONE, silty

PHASE II

Core No.	Depth (m)	Description
5	1500	SANDSTONE, medium, well-sorted
6	1505	MUDSTONE, silty
7	1510	SANDSTONE, fine, well-sorted
8	1515	MUDSTONE, silty